

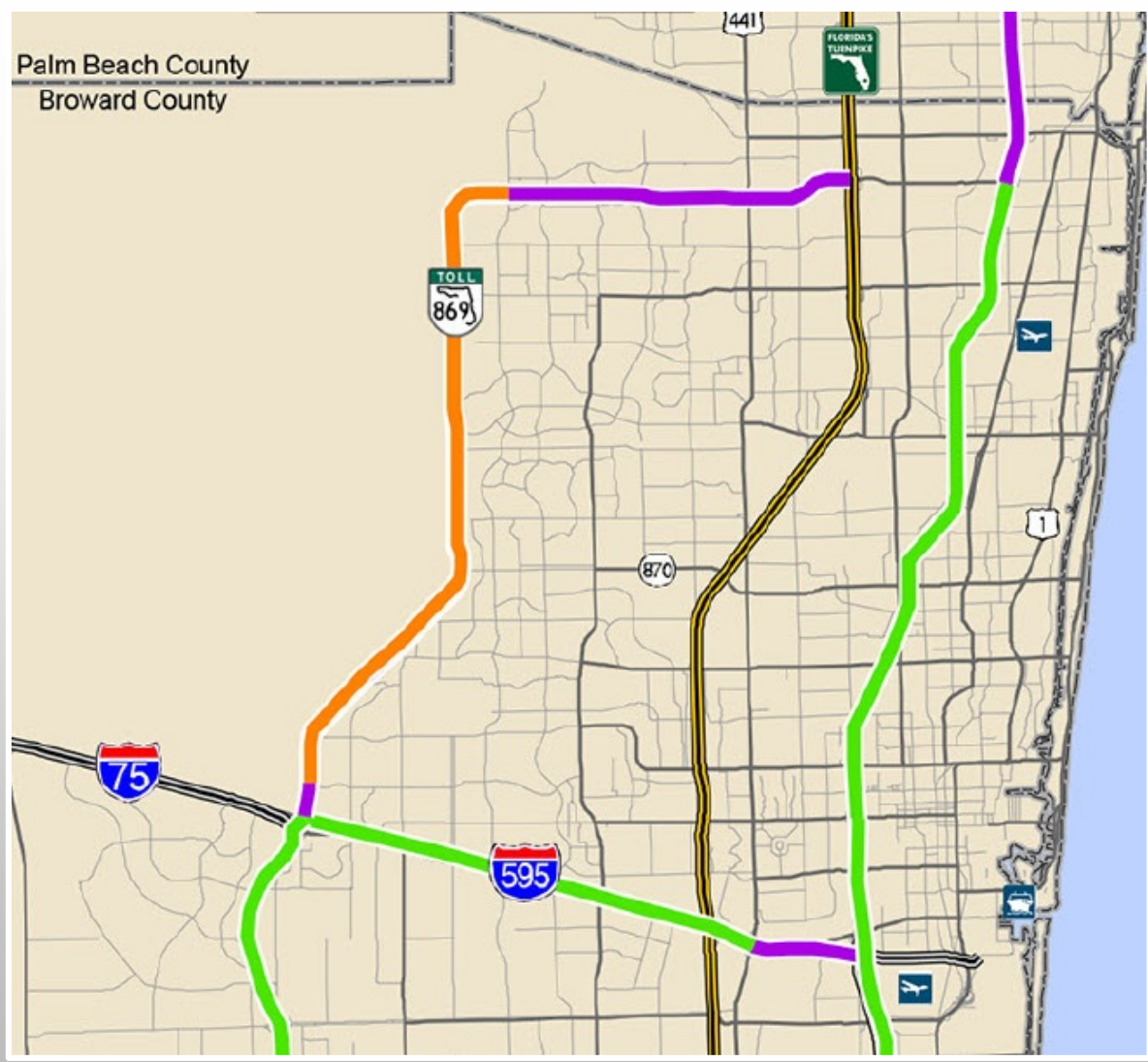
An aerial photograph of a highway interchange. A multi-lane highway runs diagonally from the bottom left to the top right. SW 10th Street crosses the highway via a bridge. The surrounding area includes residential neighborhoods with houses and trees, and some commercial buildings. The image is slightly faded to allow text to be overlaid.

# SW 10<sup>th</sup> Street

June 18, 2016

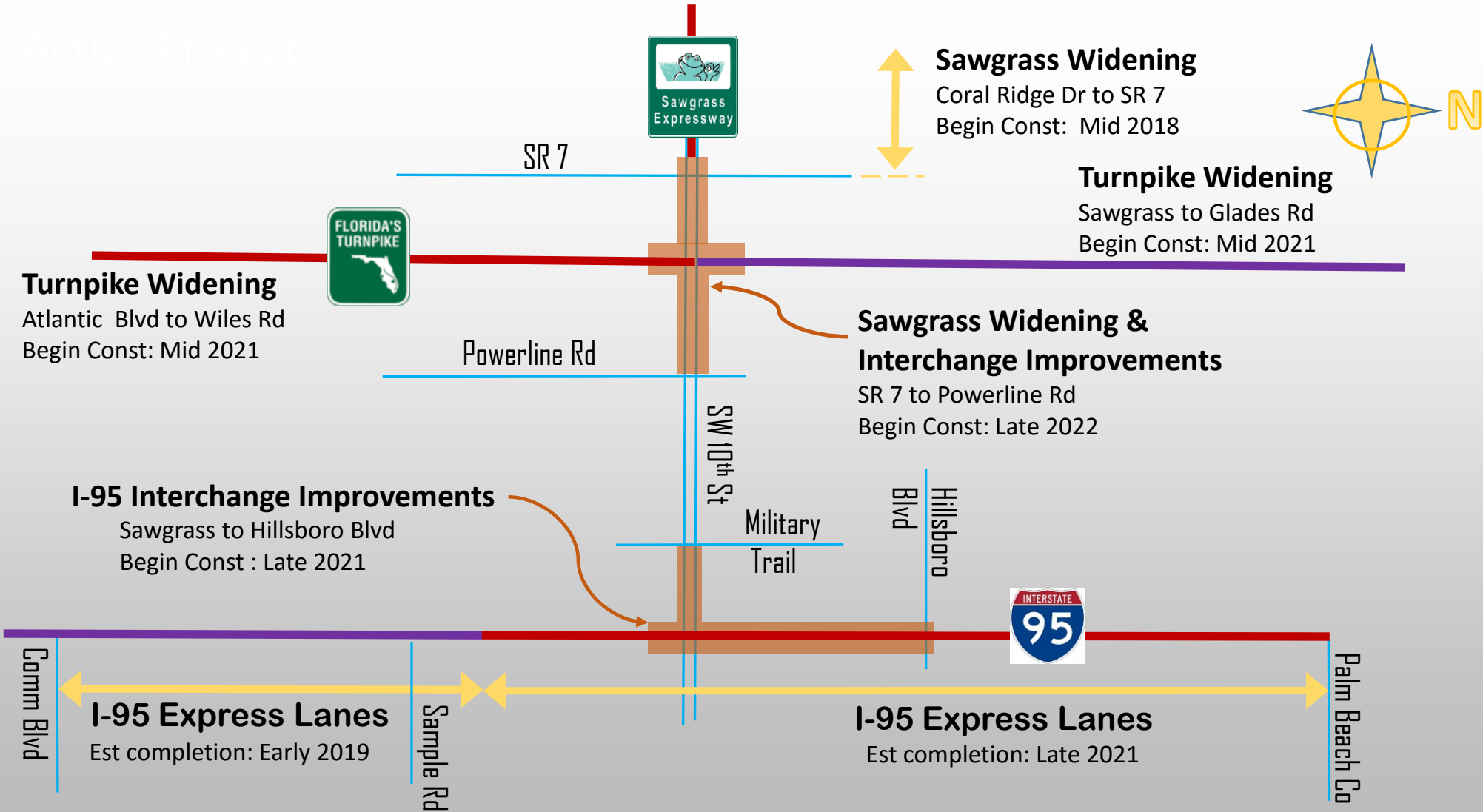
# What's next?

# Regional Interstate, Express Lanes, and Tolled Network

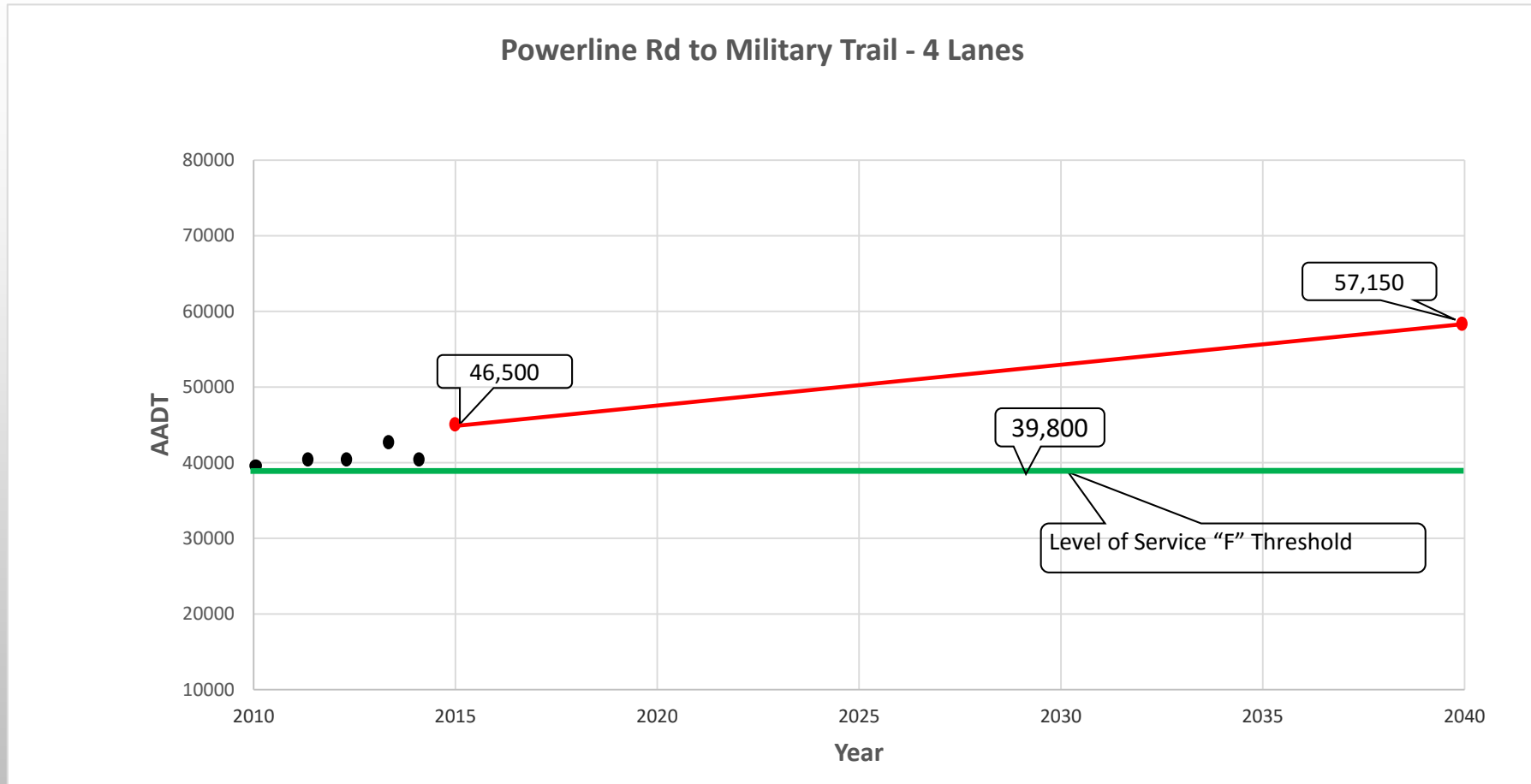


- SIS Connector from Sawgrass Expressway and Turnpike to I-95

## Active Projects

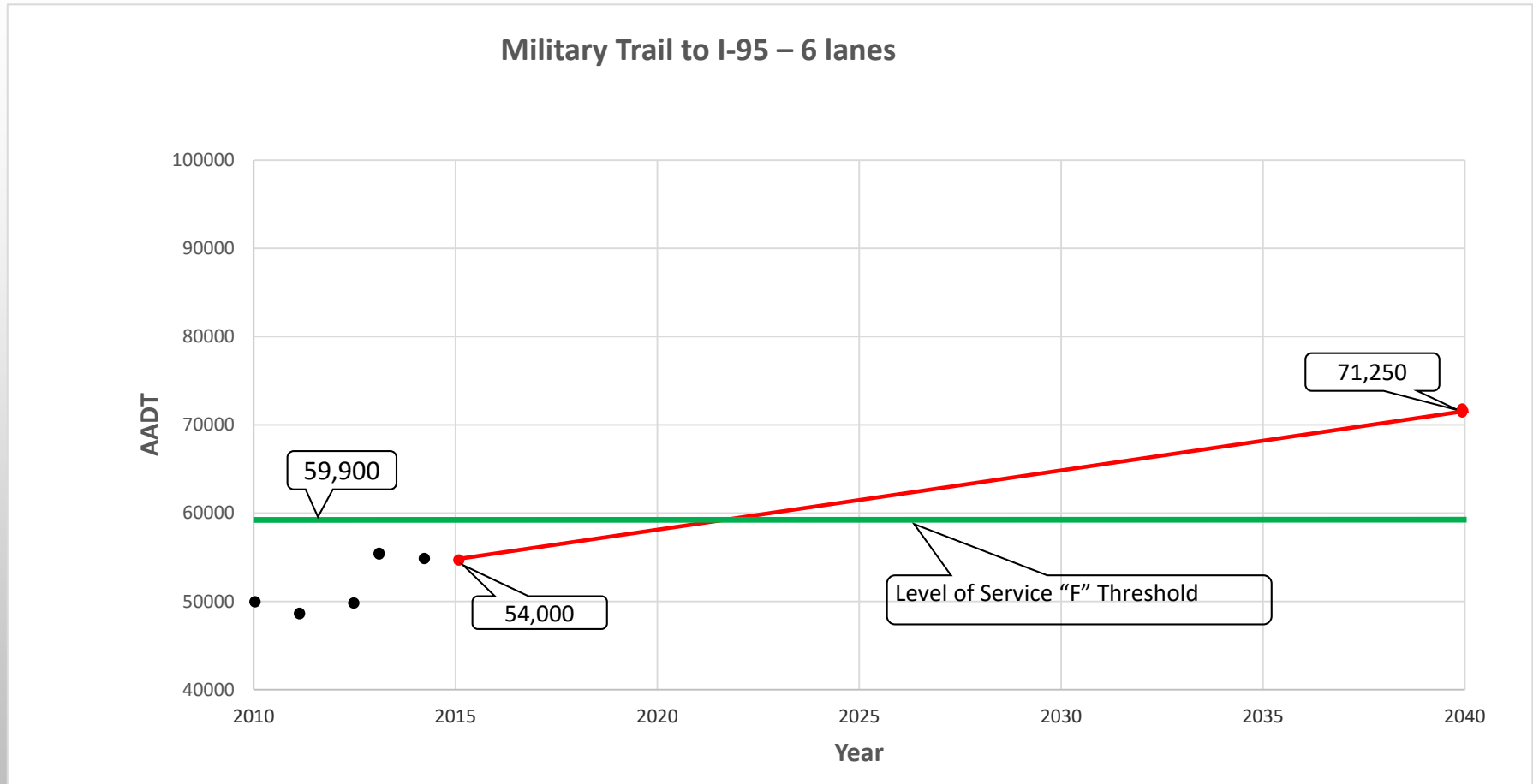


# Projected Traffic Volumes

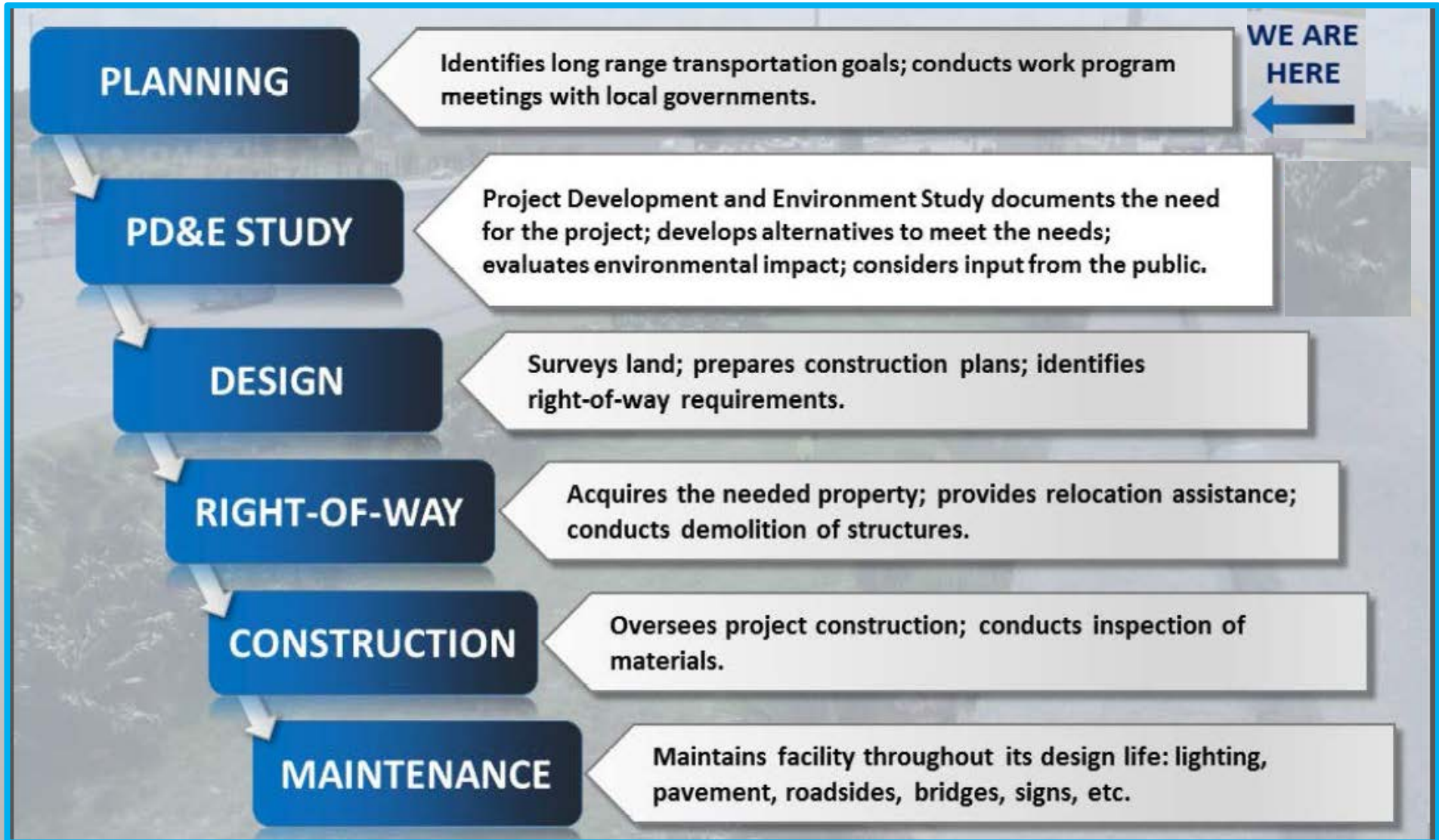




# Projected Traffic Volumes



# Project Life Cycle





# **A Project Development and Environment Study**

**Referred to as a “PD&E”**



# Project Development and Environment (PD&E) Study

## What are the objectives of a PD&E Study?

To perform the necessary social, environmental and engineering studies regarding a proposed transportation improvement to support decisions concerning “if” and “where” it should be built, and what the basic design concepts will be.



- Public Involvement
- Engineering
- Environmental





# The PD&E Study Process

## Data Collection:

- A review of all existing conditions

## Engineering Analysis:

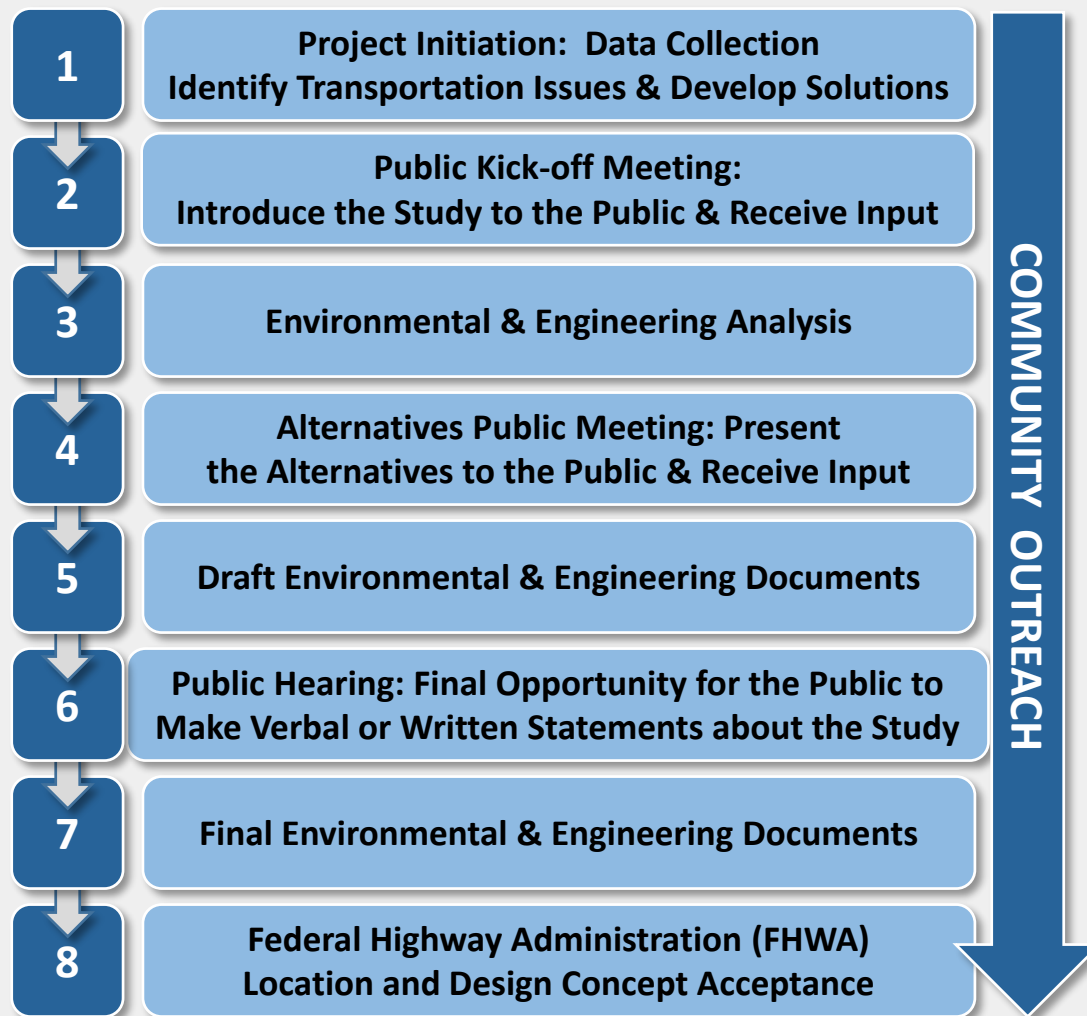
- Develop alternatives that meet the needs of the study area

## Environmental Evaluations:

- Potential impacts to the social, natural and physical environments

## Public Involvement:

- Continuous community outreach and stakeholder coordination



A continuous community outreach process is integrated into every step of the project to ensure that the corridor residents, businesses, the traveling public and other interested parties have meaningful opportunities for participation throughout the PD&E Study.

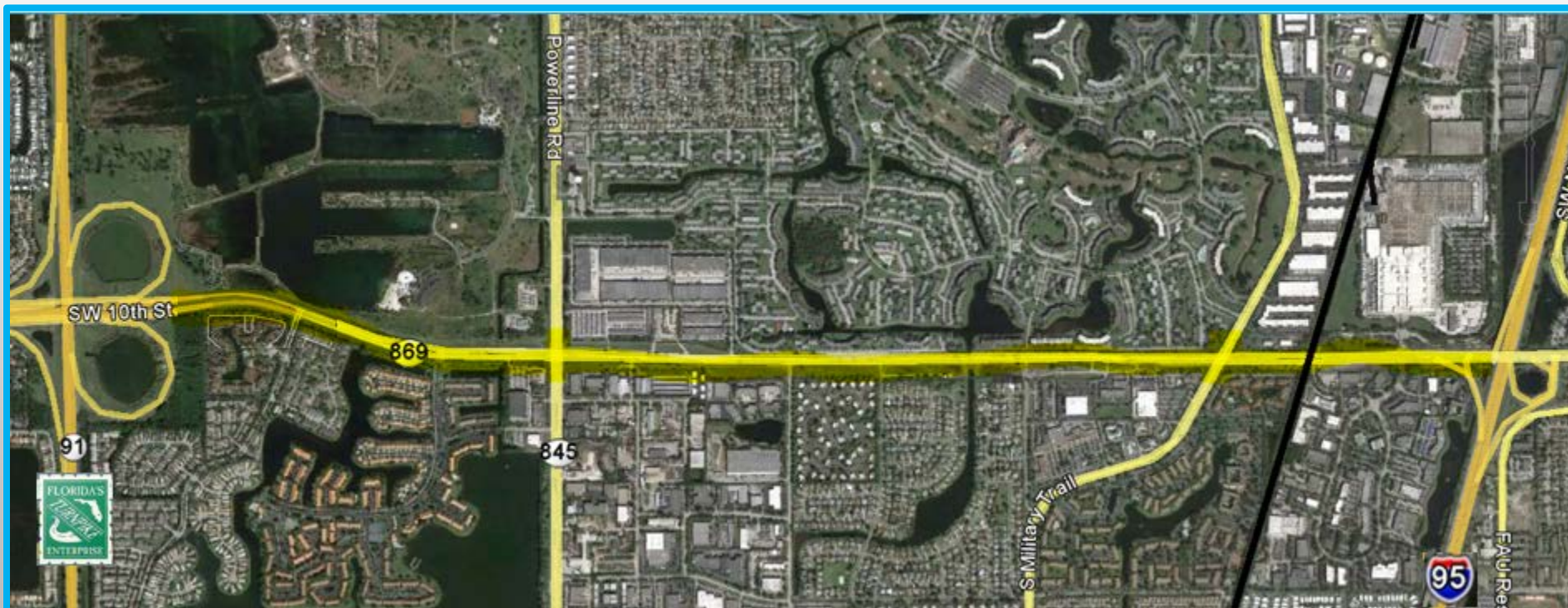


Turnpike PD&E

SW 10<sup>th</sup> Street PD&E



I-95 Interchange PD&E



# Project Purpose and Need

- Enhance safety and overall traffic operations
- Improve capacity and meet future travel demand resulting from:
  - Population growth
  - Employment growth
- Be consistent with local transportation plans





## Considerations for Concept Development and Evaluation

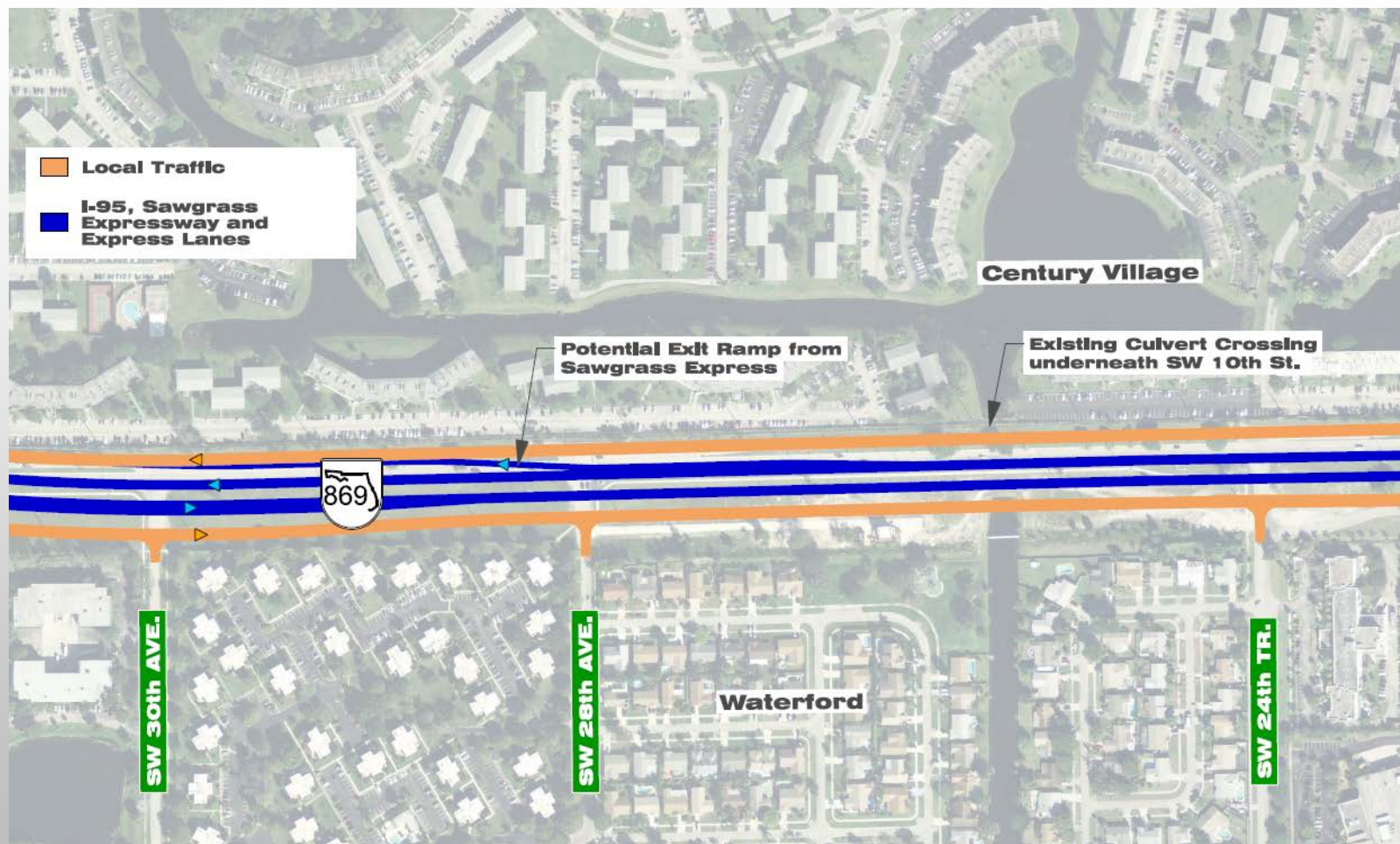
- Visual
- Access
- Costs
- Canal Impacts
- Maintenance Requirements

## Constraints impacting feasibility of Concept Alternatives

- RR overpass
- Cross-Street arterial / driveway connectivity
- I-95 Interchange / 95 Express connections

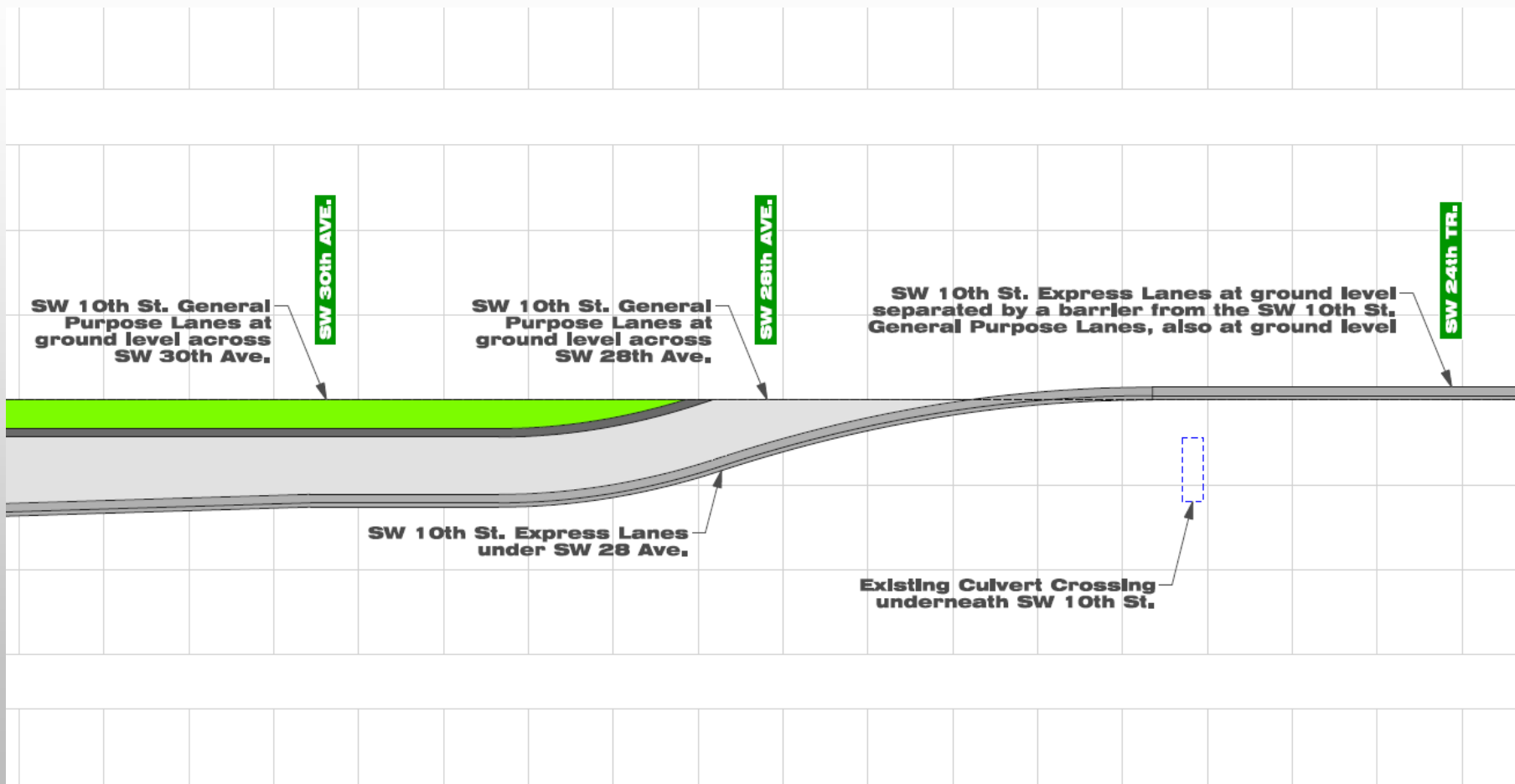
# An idea from the COAT:

## A "DEPRESSED" SECTION WHERE POSSIBLE



# An idea from the COAT:

## DEPRESSED SECTION WHERE POSSIBLE



# Input from the COAT so far:

## DEPRESSED SECTION



LOOKING WEST FROM SW 24<sup>th</sup> TERRACE





# Contact Information

**Thank you for your attention  
and for sharing your thoughts and concerns.  
I look forward to working with you during the PD&E.**

## **FDOT Project Manager**

**Anson Sonnett, P.E.**

**954-777-4474**

**[anson.sonnett@dot.state.fl.us](mailto:anson.sonnett@dot.state.fl.us)**

## Public Comment

1. If you wish to speak, please fill out a **public comment card** and turn it in at the sign-in table
  - ⇒ **NOTE: Public comments will be limited to 2 minutes/person.**
2. You may submit **written comments** using the form on the back of your agenda
3. After the meeting, you may **continue to submit feedback** through the SW10th Street Website or by email:

[www.SW10thStreetVision.org](http://www.SW10thStreetVision.org)

[info@SW10thStreetVision.org](mailto:info@SW10thStreetVision.org)