

# Walking Audit Report

## Appendix C

Walking Audit Presentation



# Walking Audit

**City of Lauderdale Lakes**

NW 31<sup>st</sup> Avenue from Sunrise Boulevard to NW 44<sup>th</sup> Street

November 29, 2018

# Agenda

- Introduction
- Brief presentation
- Walking audit
- Group discussion



Join Us for a **Walking Audit** in the City of Lauderdale Lakes!

Walk with us to evaluate NW 31st Avenue, provide a community perspective and help us identify ways to improve this corridor.



**WHY** Walking audits help identify concerns regarding safety and access for those who walk and bike. Help us transform it into a Complete Street\*.  
\*A street designed for all modes of transportation.

**WHEN + WHERE** **Date:** Thursday, November 29, 2018  
**Time:** 3:00 p.m. - 5:00 p.m.  
**Meeting Location:** Oriole Elementary  
3081 NW 39 Street, Lauderdale Lakes, FL 33309

**DETAILS**  **Walking distance will be approximately 1 mile with water and snacks provided. This is an outdoor event so please be sure to wear sunscreen and comfortable shoes.**

**RSVP** For more information about the walking audit, including a route map, please visit [Browardmpo.org/walking-audit](http://Browardmpo.org/walking-audit). Please contact Stephanie Garcia at [garcias@browardmpo.org](mailto:garcias@browardmpo.org) for more information.

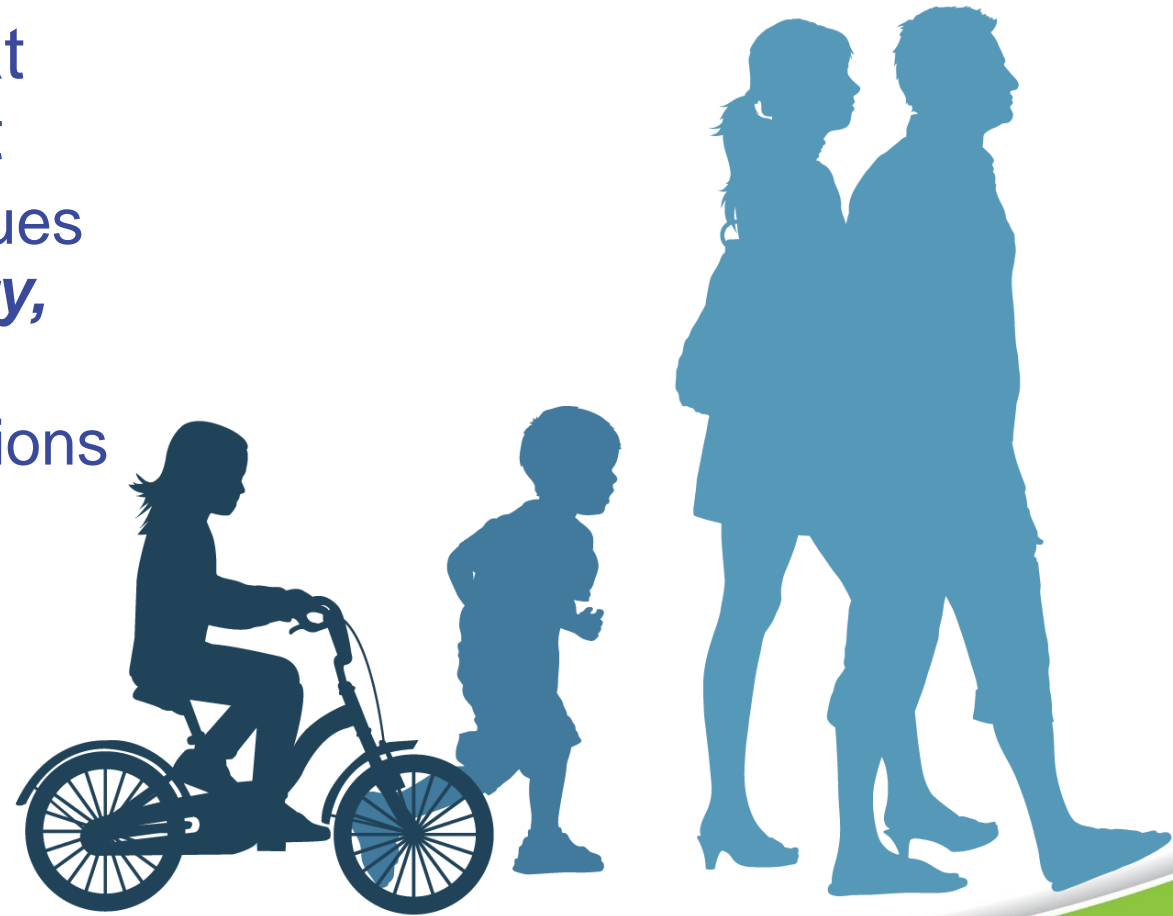
 @SpeakUp\_Broward @SpeakUpBroward @lakes\_wecare @CityLauderdaleLakes



For complaints, questions or concerns about civil rights or nondiscrimination, or for special requests under the Americans with Disabilities Act, please contact: Christopher Ryan, Public Information Officer/Title VI Coordinator at (954) 876-0036 or [ryanc@browardmpo.org](mailto:ryanc@browardmpo.org)

# Purpose

- Experiential hands-on exercise that evaluates the walking environment
  - Identify pedestrian (and bicyclist) issues such as ***safety, access, connectivity, comfort, and convenience***
  - Identify potential alternatives or solutions such as ***engineering treatments, policy changes, or education and enforcement measures***



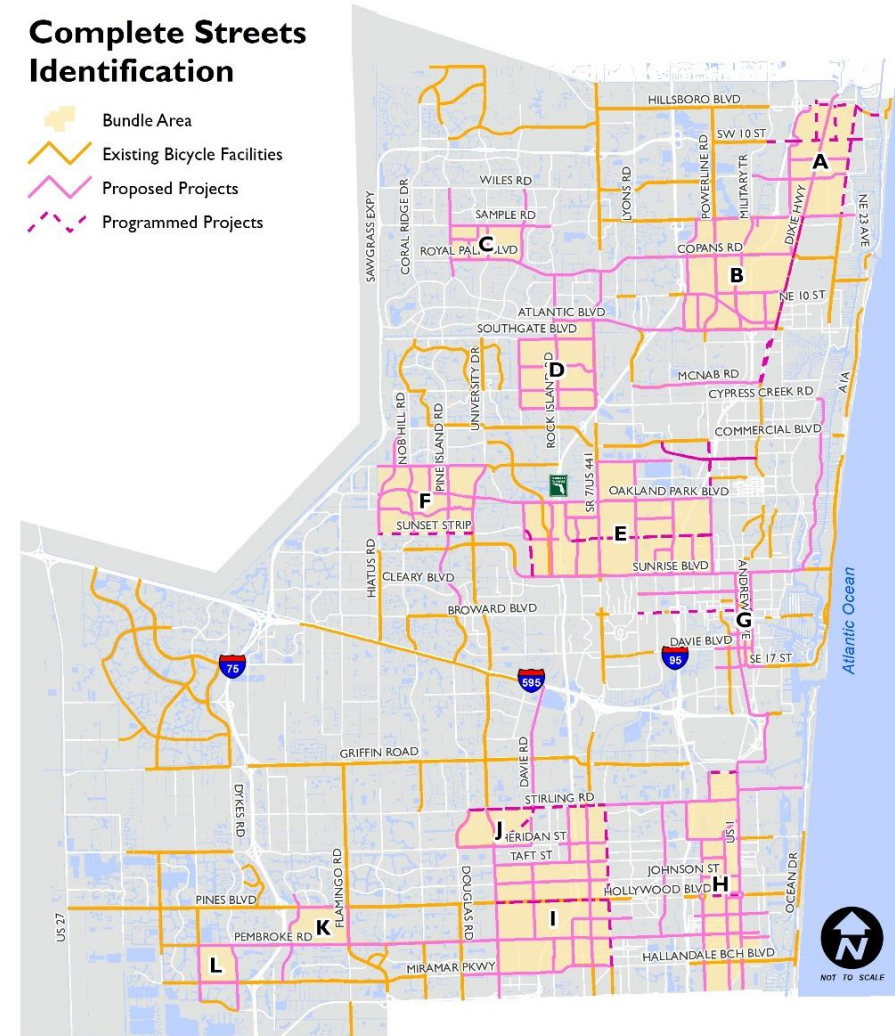


# Complete Streets Master Plan

- Intended to guide **future investment** in Complete Streets improvements by developing a *prioritized list of projects* based on technical, data-driven analysis, including access to transit
- Help inform the **scoping** of key projects that will be incorporated into the Work Program

## Complete Streets Identification

- Bundle Area
- Existing Bicycle Facilities
- Proposed Projects
- Programmed Projects



# NW 31<sup>st</sup> Avenue from Sunrise Boulevard to NW 44<sup>th</sup> Street

- Programmed project to add bicycle lanes, separated bicycle lanes and continuous furnishing zones could be provided through lane elimination and pedestrian lighting

Length: ~3.06 miles

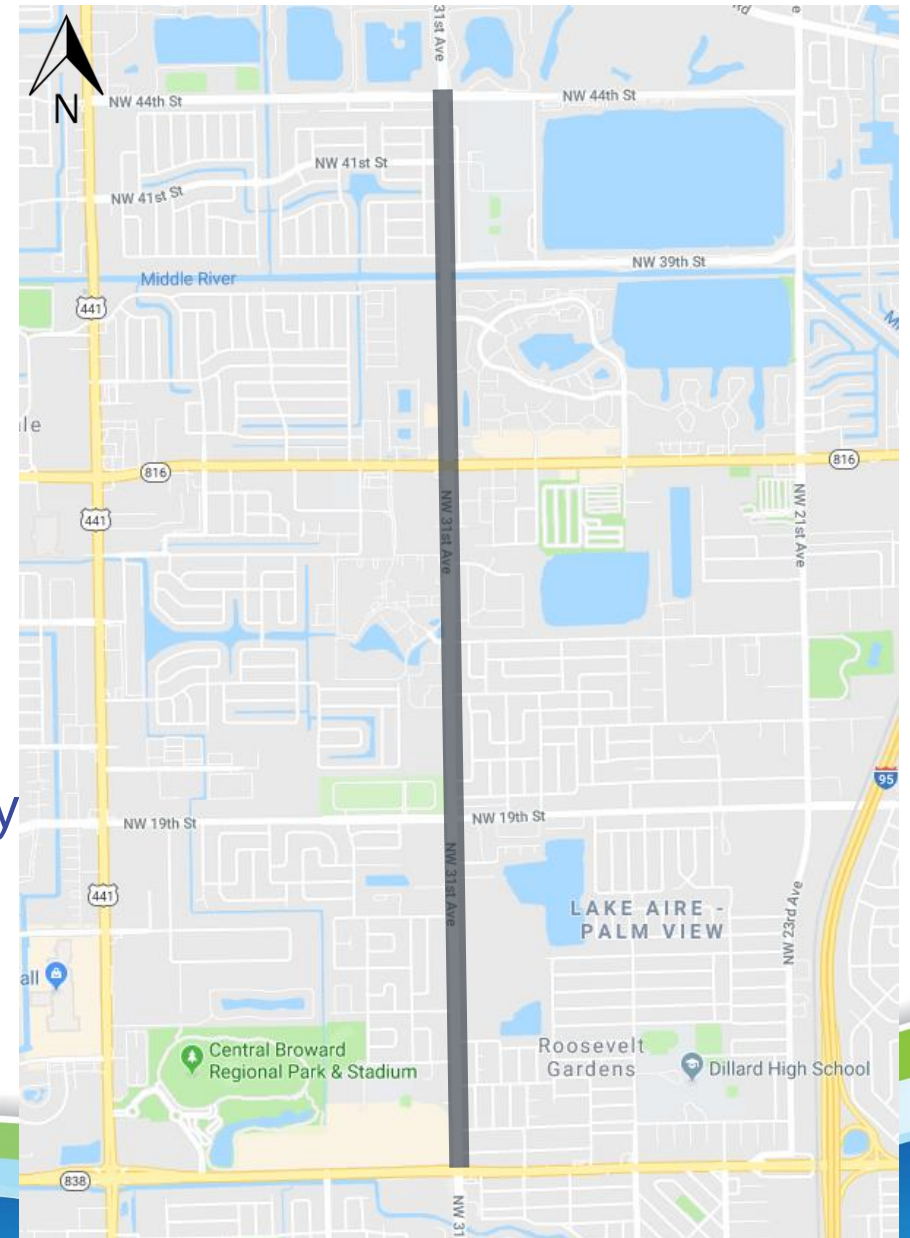
2017 AADT: ~31,000-45,500

35-45 miles per hour

6-Lane Divided Roadway

Sidewalk gaps

Bicycle gaps











NW 31 Av







NW 31 Av





6A  
START CROSSING  
WATCH FOR  
VEHICLES  
DON'T START  
FINISH CROSSING  
IF STARTED  
TIME REMAINING  
TO FINISH CROSSING  
DON'T CROSS  
PUSH BUTTON  
TO CROSS  
NW 39 ST

START CROSSING  
Watch For  
Vehicles  
DON'T START  
Finish Crossing  
If Started  
TIME REMAINING  
To Finish Crossing  
DON'T CROSS  
PUSH BUTTON  
TO CROSS  
NW 39 ST







BUS STOP

31  
ID# 2646

MyRide  
REAL TIME  
ARRIVAL



BUS STOP  
31-  
ID# 2220

MyRide  
REALTIME  
BUS  
ARRIVAL

C-13  
SOUTH FLORIDA  
WATER  
MANAGEMENT  
DISTRICT  
Water Resources







BUS

ONLY



31  
ID# 2658

**MyRide**  
BROWARD.org  
**REAL TIME  
BUS  
ARRIVAL**  
MyRide.Broward.org  
• DOWNLOAD the  
MyRide Broward App  
• CUSTOMER SERVICE  
954-357-8400

**our Ad Here**  
**1-877-412-3624**  
Martin-Gold Coast, LLC





BUS STOP  
31-  
ID# 2220

MyPlate  
REAL TIME  
BUS ARRIVAL

C-13  
SOUTH FLORIDA  
WATER  
MANAGEMENT  
DISTRICT  
Protecting Our Water Resources







SOUTH FLORIDA  
WATER  
MANAGEMENT  
DISTRICT

BUS STOP





















NO  
PARKING  
ANY  
TIME

0 -  
UNAUTHORIZED  
MOTORIZED VEHICLES  
VIOLATORS WILL BE PROSECUTED  
UNDER FLORIDA STATUTES





**START CROSSING**  
Watch For  
Vehicles

**DONT START**  
Finish Crossing  
If Started

**08**  
TIMER  
TIME REMAINING  
To Finish Crossing

**DONT CROSS**

**PUSH BUTTON  
TO CROSS**











U-HAUL  
Gentle-Ride Van

SCHOOL ZONE  
15 MPH  
WHEN FLASHING





DO NOT  
ENTER

U-HAUL









AHEAD



AHEAD





# Walking Audit

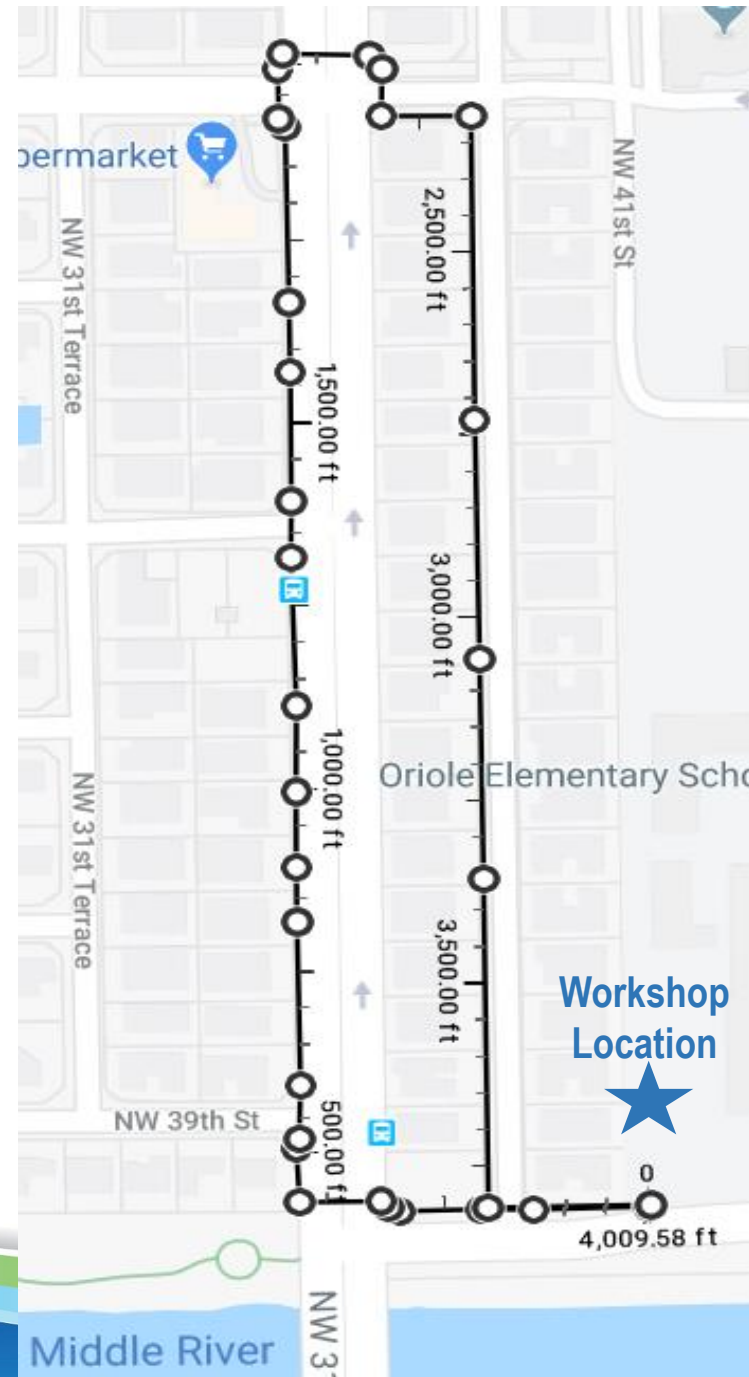
- Organize into 2-4 groups
- Group sizes can range from 5-10 people
- Group leaders will be responsible for leading the discussion and enter feedback and data
- Participants are encouraged to take notes and photos





# Walking Audit

## Route 1

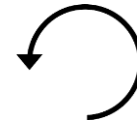




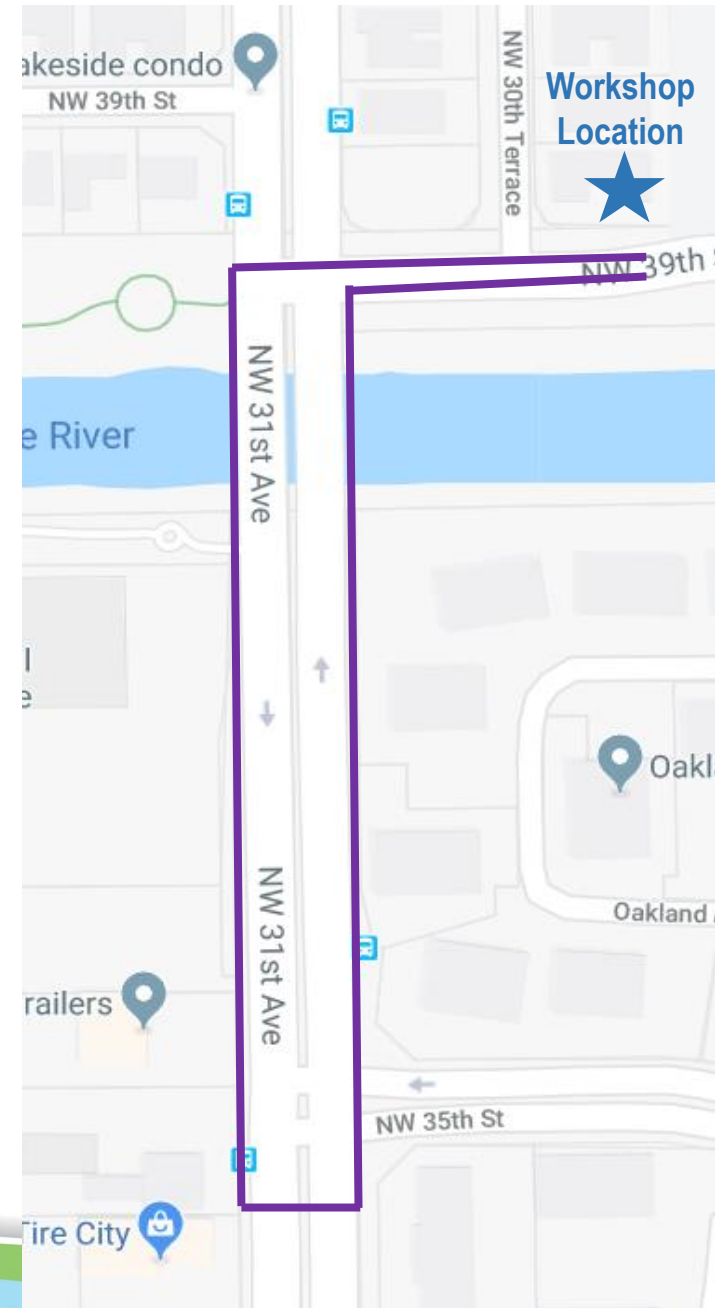
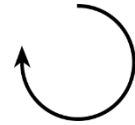
# Walking Audit

## Route 2

**Group A – Counterclockwise**



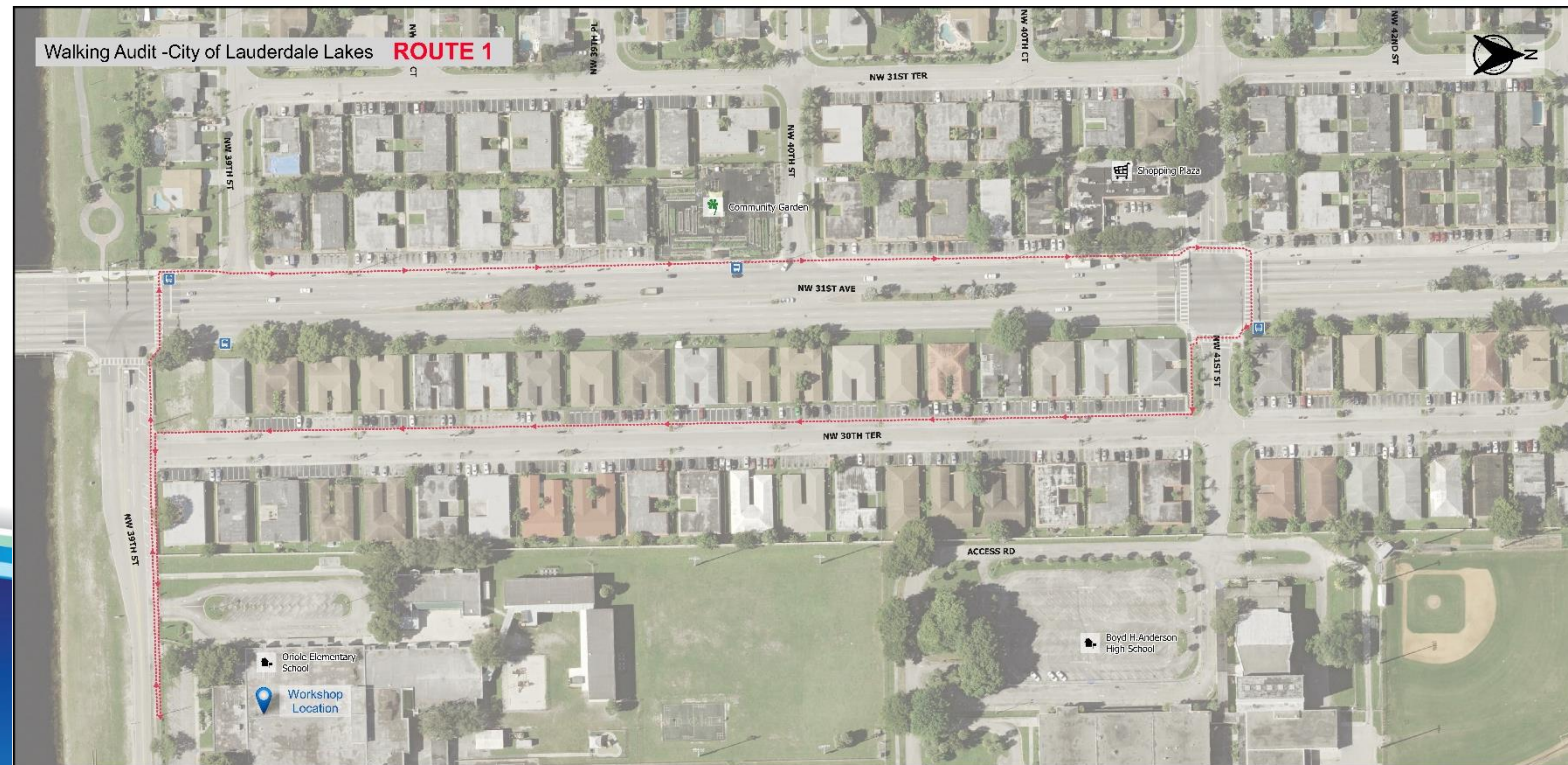
**Group B – Clockwise**





# Group Discussion

- Conclusion of the walking audit
- Aerial map of the corridor
- Quickly summarize and look at the data







## Contact Us

**Stephanie Garcia**

Broward MPO

[garcias@browardmpo.org](mailto:garcias@browardmpo.org)

**Stewart Robertson**

Kimley-Horn and Associates

[stewart.robertson@kimley-horn.com](mailto:stewart.robertson@kimley-horn.com)