

# Walking Audit Report

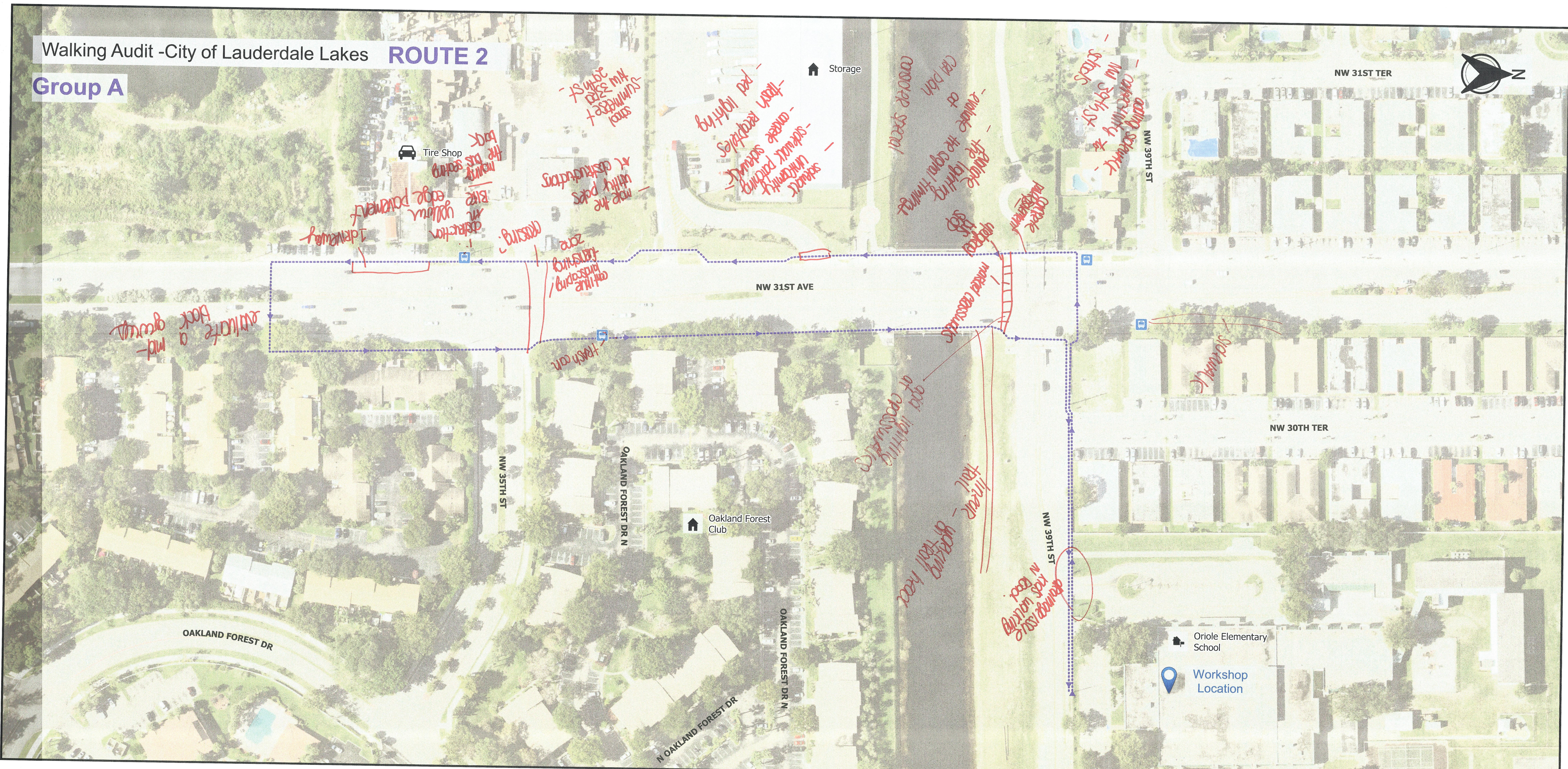
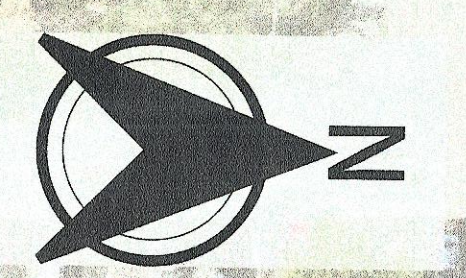
## Appendix D

Aerial Maps – Participant Results



Walking Audit -City of Lauderdale Lakes **ROUTE 2**

**Group A**



Summergate + school NW 32nd St  
Storage  
Tire Shop  
Back the bus seating  
make the utility poles at intersections  
Bike lane  
edge pavement  
distraction zone  
crossing  
cont. line landscaping

lighting  
trash receptacles  
concrete sidewalk  
sidewalk parking  
unmarked parking

evaluate the signal timing at Cal Park  
concrete special  
marking crosswalks  
marking crosswalks  
marking crosswalks

concrete sidewalk  
concrete utility poles  
schools NW 39th St

evaluate back a mid-ground

trash can

get lighting at crosswalks  
near trail  
working on ball field

drainage issue in road

sidewalk

Oriole Elementary School  
Workshop Location

OAKLAND FOREST DR

NW 35TH ST

OAKLAND FOREST DR N

Oakland Forest Club

OAKLAND FOREST DR N

N OAKLAND FOREST DR

NW 31ST AVE

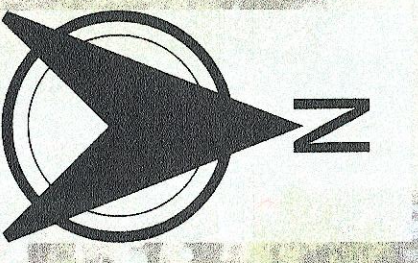
NW 31ST TER

NW 30TH TER

NW 39TH ST

NW 39TH ST





NW 31ST TER

Tire Shop

Storage

shelter lighting

street trees in Furningstead raised separated bike lanes (both sides)

green screening or fencing

South Cross Walk

NW 31ST AVE

shelter lighting

NW 30TH TER

NW 35TH ST

OAKLAND FOREST DR N

Oakland Forest Club

NW 39TH ST

Oriole Elementary School

Workshop Location

OAKLAND FOREST DR

N OAKLAND FOREST DR

OAKLAND FOREST DR N

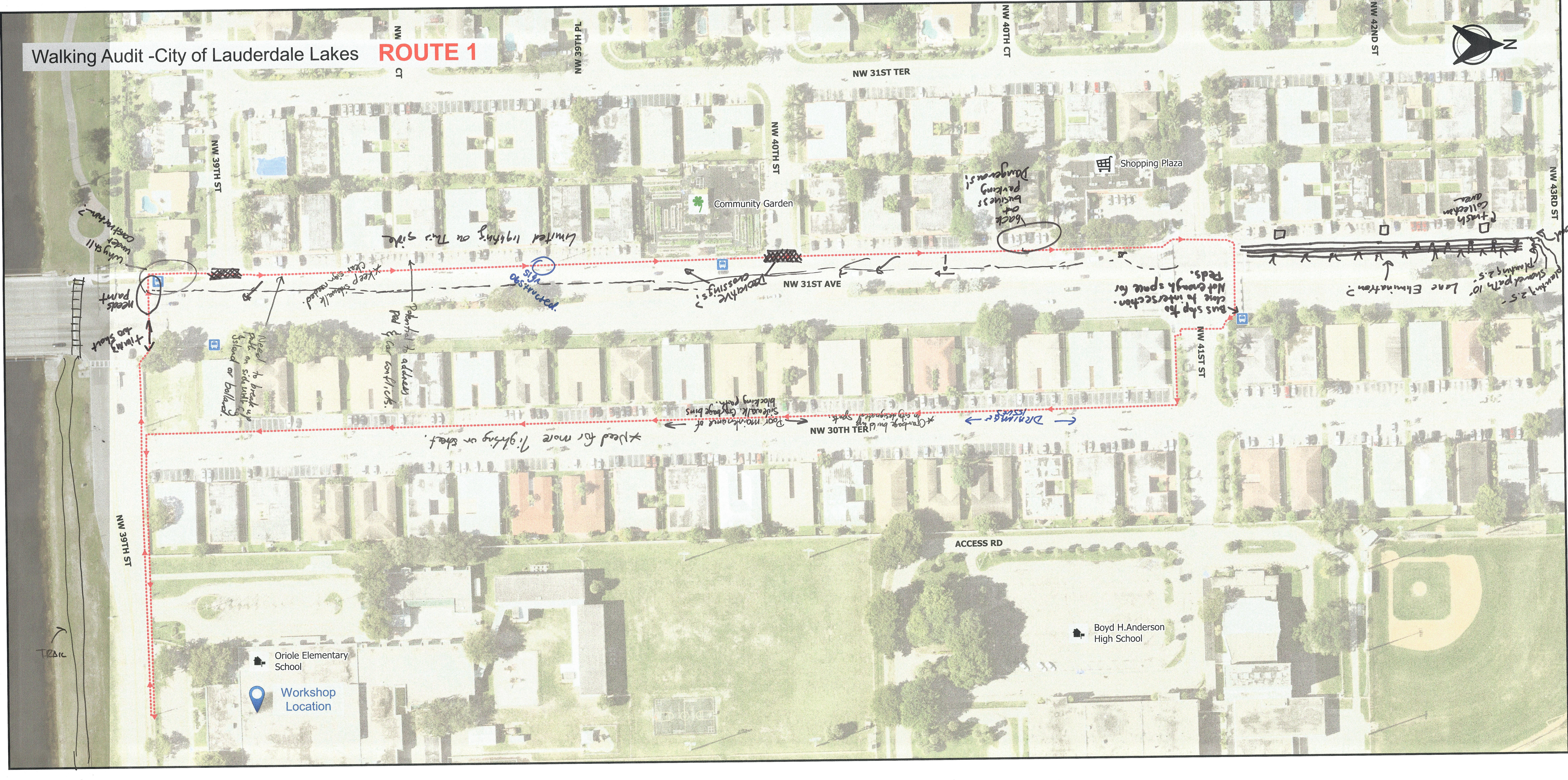
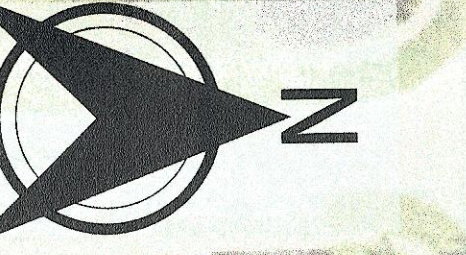
greenway trail





Walking Audit - City of Lauderdale Lakes

**ROUTE 1**



Why all under coating? Needs paint + timing too short

Need to break up path on sidewalk & island or ballway.

\*Keep sidewalk clear signs needed.

Polished to address Ped & car conflicts.

Limited lighting on this side

parent stop

Proactive crossings?

\*Poor maintenance of sidewalk. Garbage bins blocking path.

\*Garbage bins & sparks in city designated spots

Dangerous! back at business parking

Reds. Not enough space for bus stop to intersection.

planning 2.5 - shared path 10' Lane Elimination? trash collection area

Oriole Elementary School  
Workshop Location

Boyd H. Anderson High School