

# Mobility Hub at SW/SE

# 17<sup>TH</sup> ST

Project Development

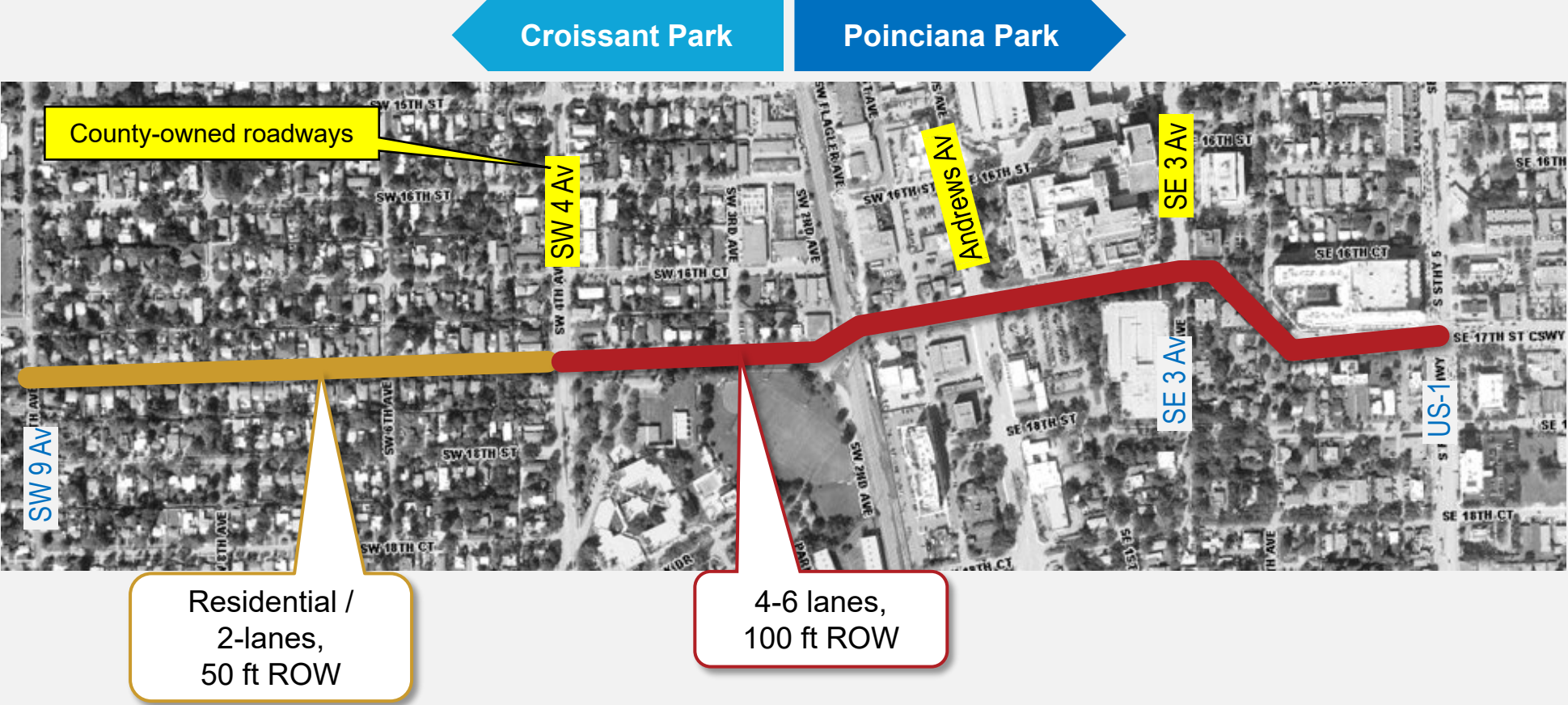


# Agenda

- Project Background
- Schedule
- Existing Conditions & City Objectives
- Next Steps



# Project Background: Project Boundary



# Project Background: 5 W's

---

## Who:

- Broward MPO
- Kimley-Horn
- City of Fort Lauderdale
- Broward County
- FDOT

## What:

- Approve a Locally Preferred Concept (15% Design)
- Complete Streets elements
- MTECC Bid Package

## Where:

- 17th Street from SW 9 Av to US1

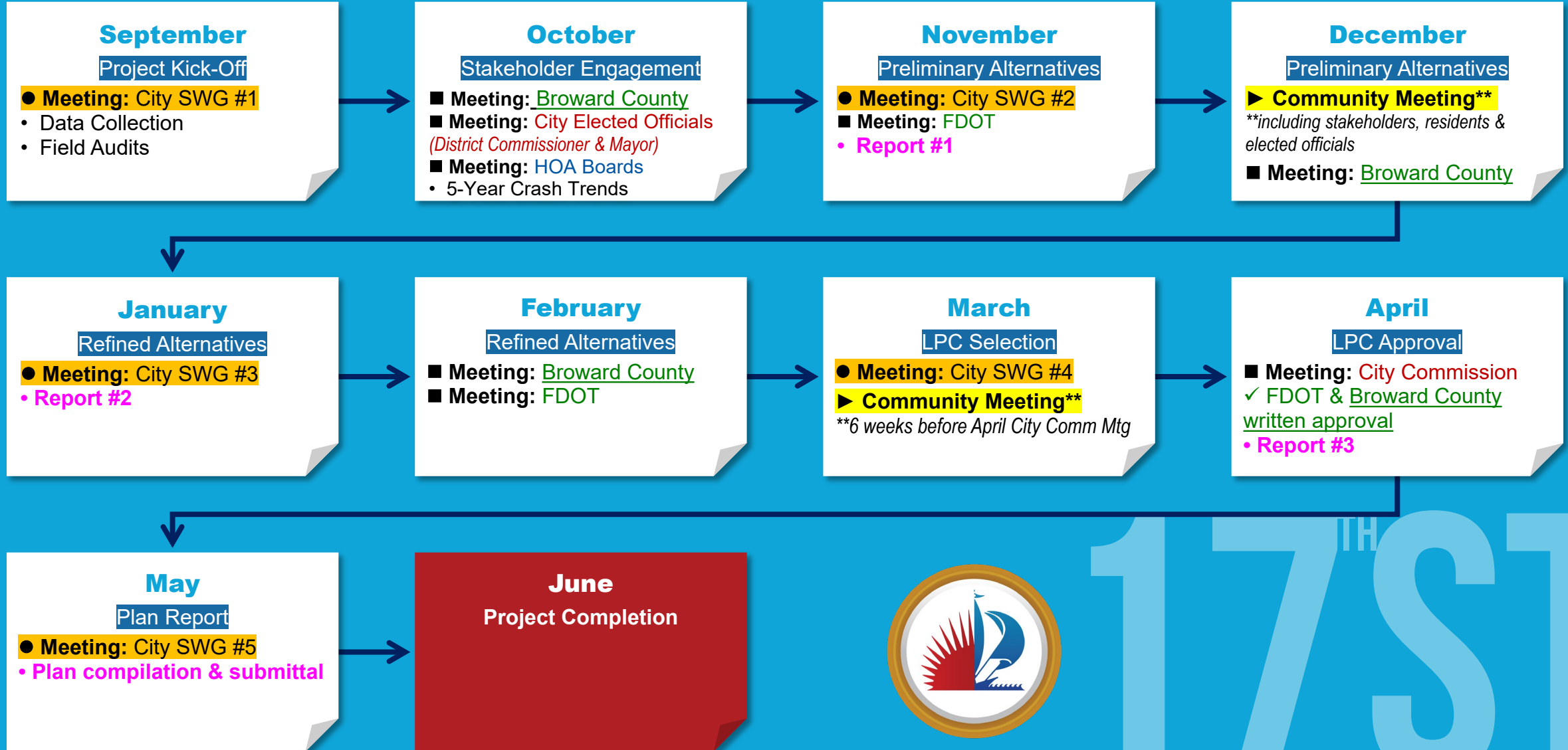
## Why:

- TIP (FTA capital funds = \$6.8 million)
- Previous BMPO Studies: Complete Streets Master Plan; Walking Audit
- Previous City Studies: LauderTrail; Connecting the Blocks; Preliminary Lane Elimination Assessment
- Broward Commuter Rail

## When:

- LPC must be approved by City Commission by April 2024
- Design in 2024 / 2025
- Construction in 2026/2027

# Project Schedule



17<sup>TH</sup> ST

# Segment 1: SW 9 Av to west end of SW 4 Av



## Existing Conditions:

- Sidewalk Gaps (south ROW)
- Missing sidewalk extensions at intersections
- Sloped sidewalks near SW 4 Av
- No bicycle facilities
- No marked crosswalks at SW 8 Av and SW 6 Av
- No ped-scale lighting
- Minimal Street lighting
- 4-way 3-way Stops intersections
- SW 8 Av is off-set intersection
- No traffic calming features
- School zone pavement markings

## City Preferences:

- ✓ Fill in missing sidewalk gaps
- ✓ Fill in missing sidewalk extensions at intersections
- ✓ Sharrows / "Share the Road" signage
- ✓ Mark all crosswalks
- ✓ Traffic calming features both along roadway and at intersections
- ✓ Improve roadway lighting
- ✓ Improve stormwater management
- ✓ Improve safety of intersection at SW 9 Av (N/S traffic)
- ✓ Realign pavement markings just west of SW 4 Av

# Segment 2: SW 4 Av to west of Andrews Av



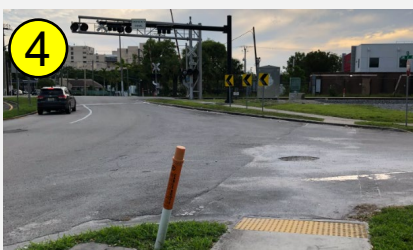
Faded crosswalks @ SW 4 Av



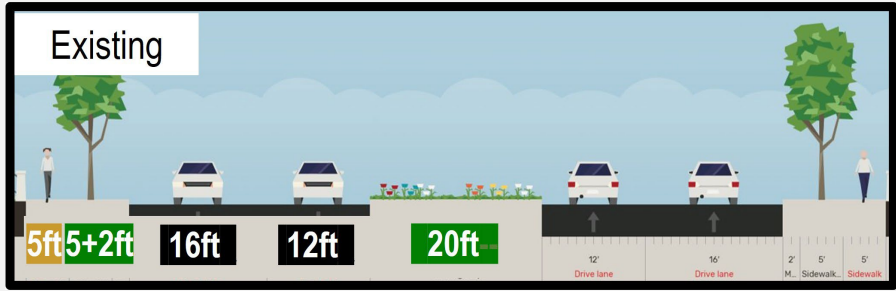
Bus Stop @ SW 4 Av, SE corner



Crossing @ SW 3 Av median break



No crosswalk @ SW 2 Av, south ROW



Sidewalk gap @ FEC, north ROW



Crossing @ SW 1 Av, north ROW

## Existing Conditions:

- @ **SW 4 Av**: Faded crosswalk markings; Ped's cross 5 lanes; Permissive only LTs; 1 streetlight (in east median); school crossing guards; school bus stops
- **West of FEC**: Shade trees in north and south ROW; school speed zone
- Missing sidewalk over FEC
- No bicycle facilities
- No marked crosswalks over side streets
- Missing curb extensions and accessible components
- No ped-scale lighting; Minimal Street lighting
- Pedestrians crossing not at marked crosswalks
- Flooding in south ROW between SW 2 Av - SW 3 Av
- SW 17 St @ SW 1 Av is on BMPO High Injury Network (2017 – 2021 crashes)

## City Preferences:

- ✓ **Raised, separated, protected bike facility** (reduce outside lane width or narrow median)
- ✓ Marked crosswalks over side streets
- ✓ High emphasis crosswalk markings
- ✓ ADA compliant facilities
- ✓ Improved street lighting
- ✓ Ped-Scale Lighting
- ✓ Relocate FPL poles from medians
- ✓ Mid-block crosswalk near SW 3 Av
- ✓ Protect trees
- ✓ Convert SW 4 Av signal to Mast Arm; Assess need for LT phase
- ✓ Improve stormwater management

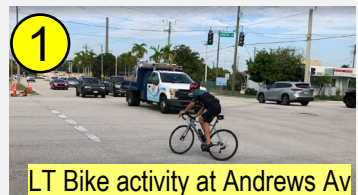
# Segment 3: Andrews Av to SE 3 Av



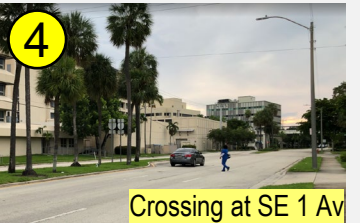
West view to Andrews Av, Heavy Trucks on Andrews Av



Use Crosswalk sign under ped-bridge



LT Bike activity at Andrews Av



Crossing at SE 1 Av



SE 3 Av; west view



Faded crosswalk markings, East crosswalk



Crossing at SE 1 Av



SE 3 Av; north view



Riding EB in south shoulder



SE 3 Av; east view

## Existing Conditions:

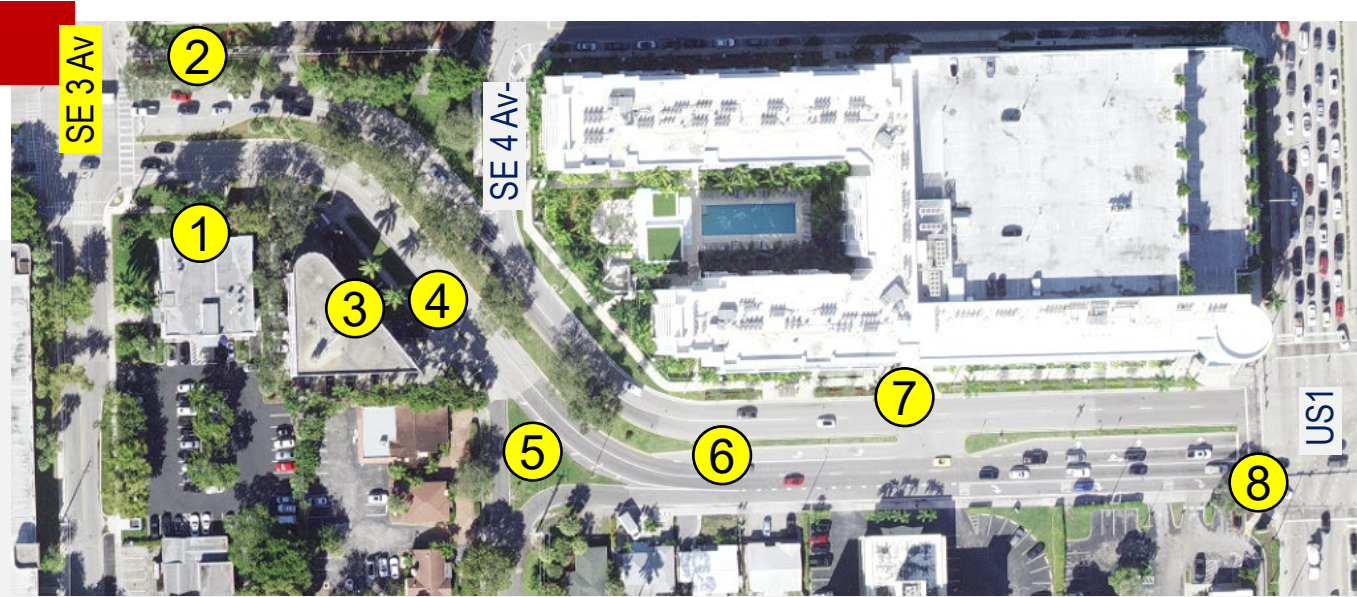
- @ **Andrews Av**: Faded crosswalk markings; Permissive only LTs from 17 St; Ped's crossing 6 lanes
- @ **SE 3 Av**: High visibility crosswalk markings; Ped-Bridge from parking garage to hospital (no street access); Permissive LT on all directions
- No bicycle facilities; bicyclists observed riding in right shoulders
- No marked crosswalks over SE 1 Av or driveways
- Missing curb extensions and accessible components
- Heavy truck traffic on Andrews Av
- No ped-scale lighting
- Use crosswalk sign under ped-bridge
- Ped's observed crossing @ SE 1 Av from hospital employee parking lot to employee entrance
- BCT Stops missing shelters & other amenities
- SW 17 St @ Andrews Av is on BMPO High

- ## City Preferences:

  - ✓ **Raised, separated, protected bike facility**
  - ✓ Remove "3<sup>rd</sup>" lane / continuous right-turn lane
  - ✓ Keep left turn lanes
  - ✓ Tighten median opening and curb radii at SE 1 Av
  - ✓ *Marked crosswalks over side streets*
  - ✓ *High emphasis crosswalk markings*
  - ✓ *ADA compliant facilities*
  - ✓ *Improved street lighting (including under pedestrian bridge)*
  - ✓ Ped-Scale Lighting
  - ✓ Assess need for mid-block crossing for hospital parking
  - ✓ Increase shading
  - ✓ *Convert both intersection equipment to Mast Arm and other signal improvements*
  - ✓ Assess need for LT phase
  - ✓ *Improve stormwater management*



# Segment 4: East of SE 3 Av to west ROW US1



South ROW, east view



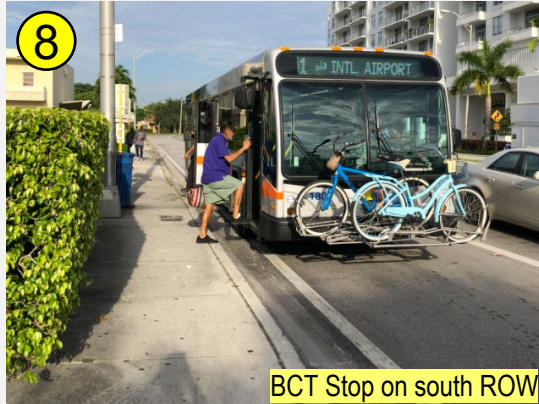
Bicyclist crossing at median opening



North ROW, west view



Heavy truck



BCT Stop on south ROW



Crossing near SE 4 Av



South ROW, west view



SE 4 Av, south ROW median



Crossing near 500 block



SW corner, east view

## Existing Conditions:

- No bicycle facilities; bicyclists observed riding in right shoulders, darting into roadway, and riding on sidewalk
- North sidewalk at SE 4 Av: connects via landscaped median
- South sidewalk at SE 4 Av: no connection to landscape median (well-worn path visible)
- East of SE 1 Av, south sidewalk abuts back-out parking & is at curb.
- 20 MPH speed limit at roadway curve
- Heavy Truck traffic on 17 St
- No marked crosswalks over driveways
- Missing curb extensions and accessible components
- No ped-scale lighting
- Ped's observed crossing not at marked crosswalks
- BCT Stops have shelters / amenities
- Stop at SW corner of US1 has sign only

## City Preferences:

- ✓ **Shared Use Path or marked bike facility**
- ✓ *Remove "3rd" lane / continuous right-turn lane*
- ✓ *Keep left turn lanes*
- ✓ Median or other physical barrier to restrict SB to EB left turns from Whole Foods parking garage
- ✓ Enhance landscaping in the southern porkchop at SE 4 Av
- ✓ *Marked crosswalks over side streets*
- ✓ *ADA compliant facilities*
- ✓ *Ped-Scale Lighting*

Mobility Hub  
at SW/SE

17<sup>TH</sup> ST

Project Development

