 Install Rectangular Rapid Flashing Beacons (RRFB)

Install 15 MPH pavement marking

Install 15 MPH pavement marking

Construct 3" raised crosswalk

Cleary Boulevard



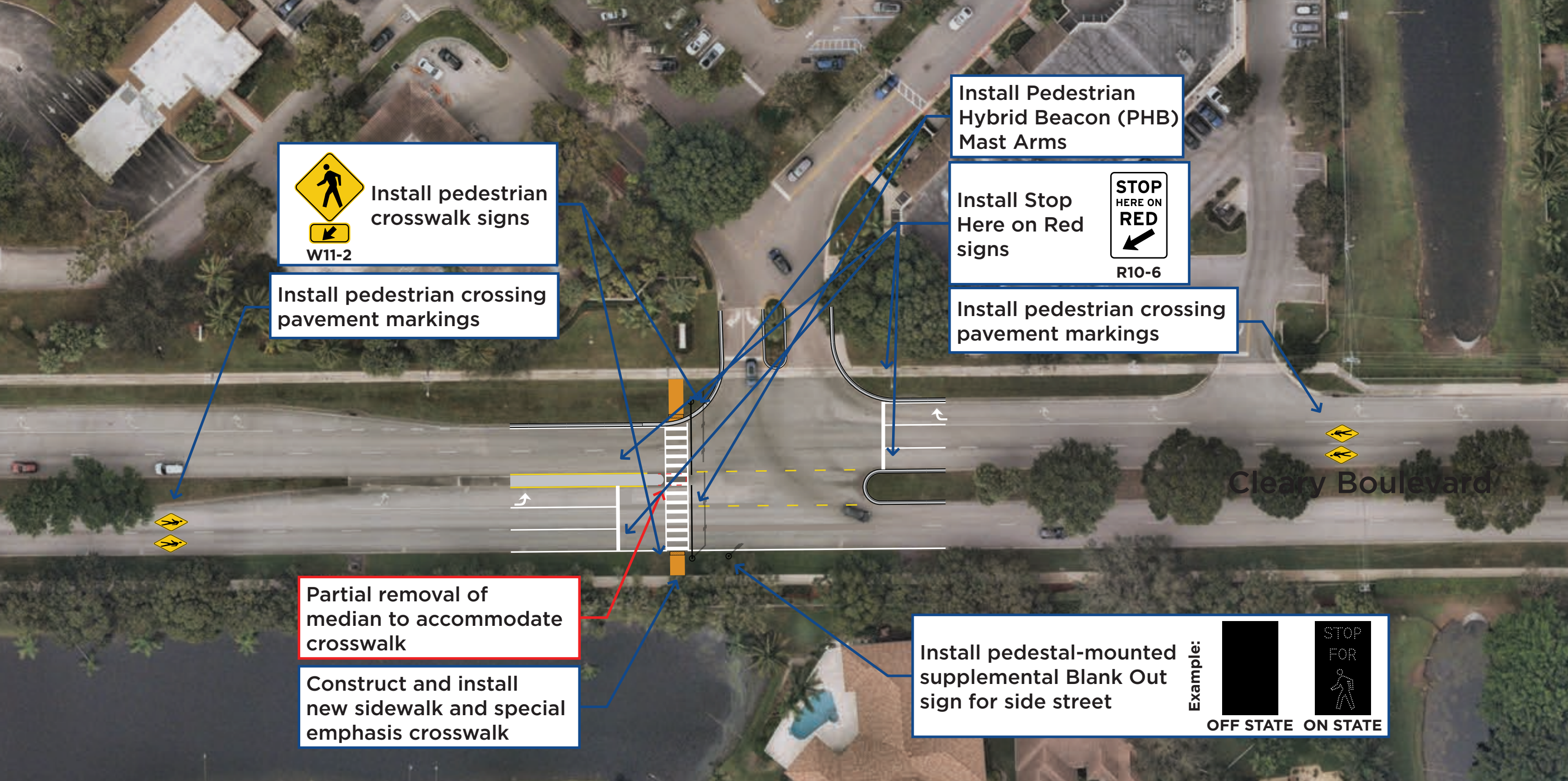
LEGEND
- - - : Location of existing curb
■ : New sidewalk

Note: These images and diagrams represent a planning concept based on cursory planning efforts. If concept advances, significant additional design would be required.



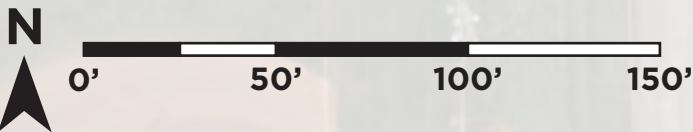
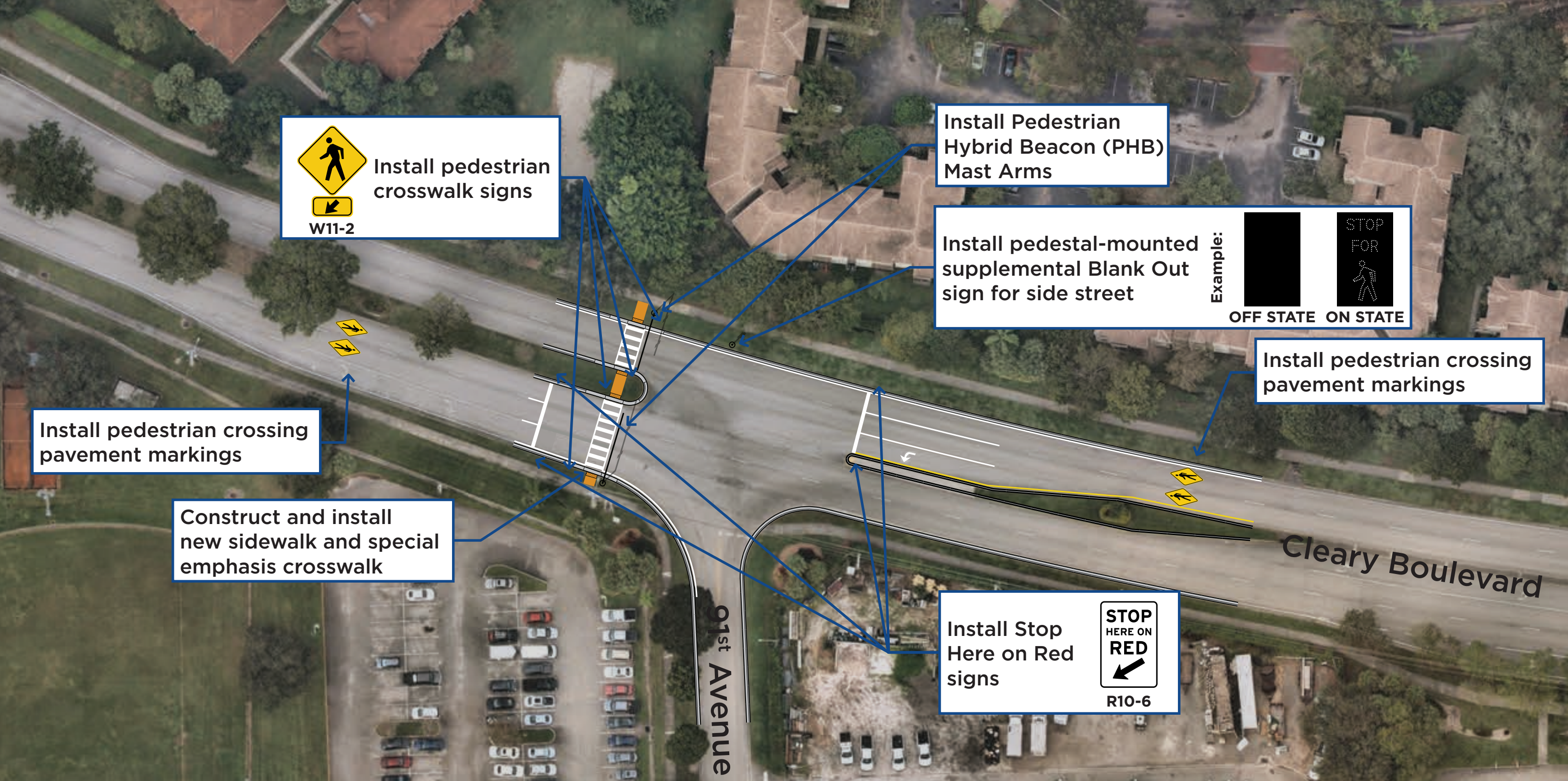
Recommended Improvements

Cleary Boulevard & Lakes of Jacaranda and Sunset Park entrances



LEGEND
 - - - : Location of existing curb
 ■ : New sidewalk

Note: These images and diagrams represent a planning concept based on cursory planning efforts. If concept advances, significant additional design would be required.

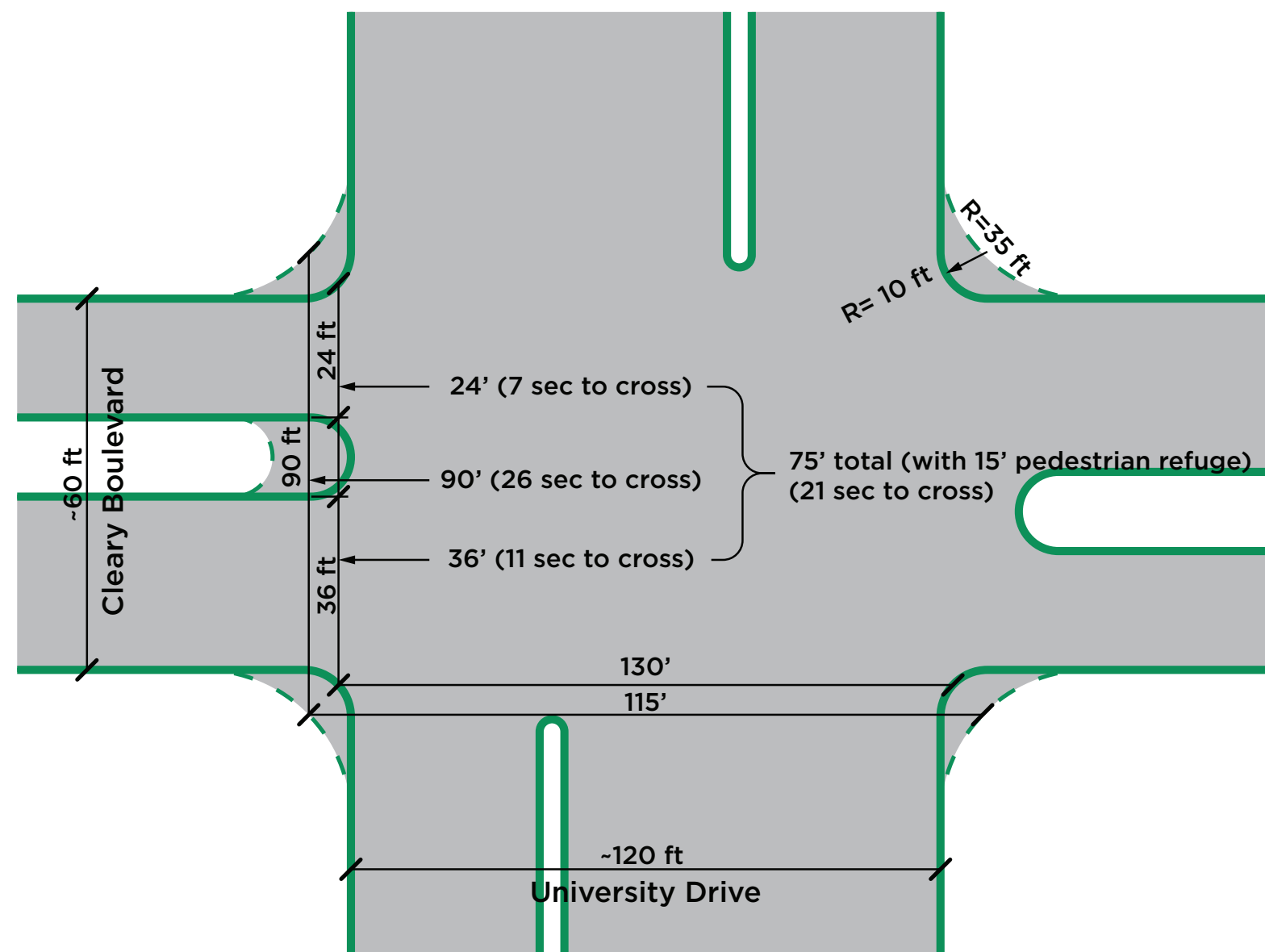
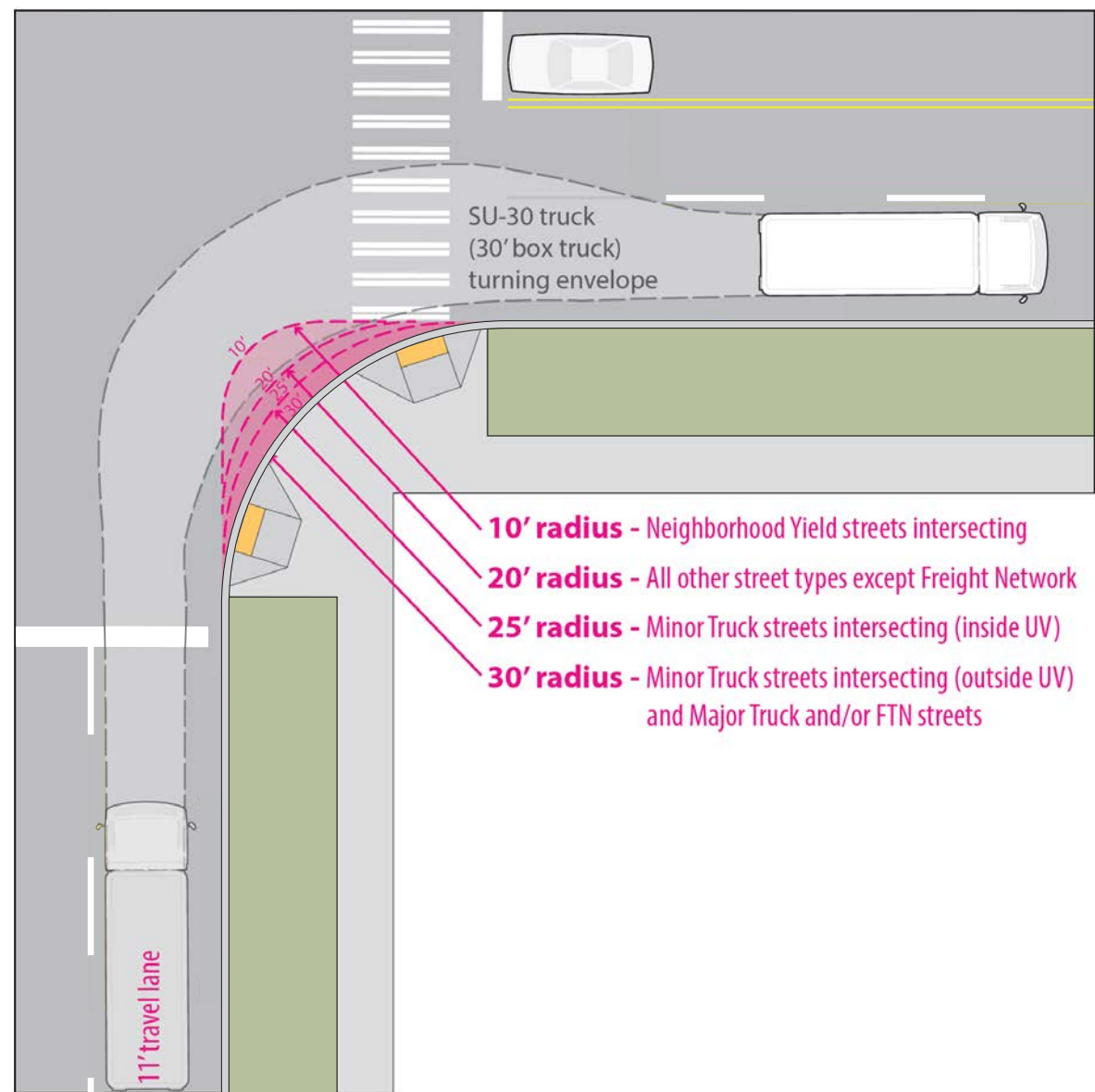


LEGEND
 - - - : Location of existing curb
 ■ : New sidewalk

Note: These images and diagrams represent a planning concept based on cursory planning efforts. If concept advances, significant additional design would be required.



Recommended Improvements Cleary Boulevard & NW 91st Avenue



- Reduction of corner curb radii is critical to creating an intersection with safe turning speeds.
- Smaller curb radius expands the pedestrian area, allowing for better pedestrian ramp alignment.

- The size of the corner relates directly to the length of the crosswalk.
- Longer crosswalks takes more time to cross, increasing pedestrian exposure risk and reducing bicyclist/pedestrian safety.
- An addition of a median pedestrian refuge island reduces the exposure time experienced by bicyclist/pedestrian in the intersection, improving safety.