

A woman is sitting in a small boat in a flooded parking lot. The water is murky and reflects the surrounding cars. The background shows several cars parked in rows, mostly in shades of grey and black. The overall scene is dimly lit, suggesting an overcast day or early morning/late afternoon.

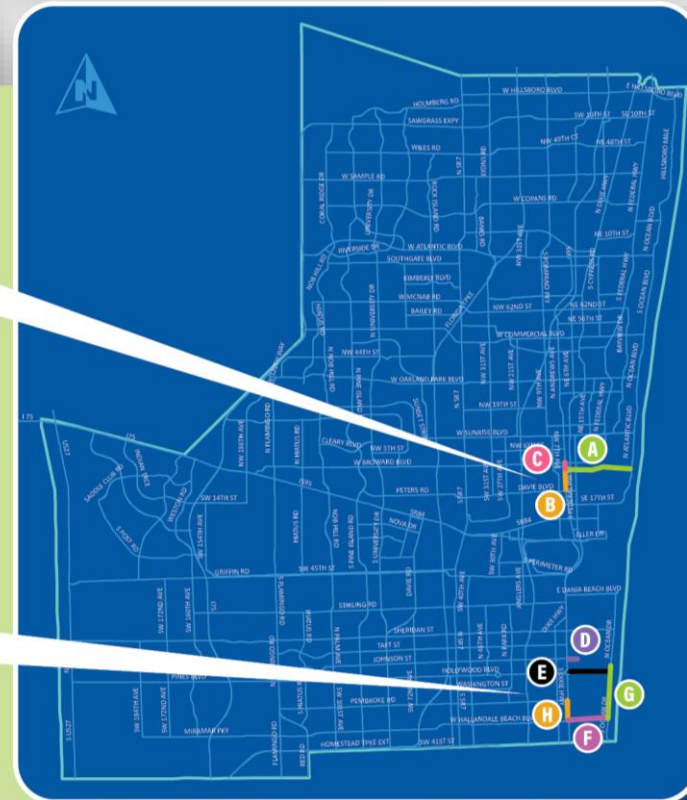
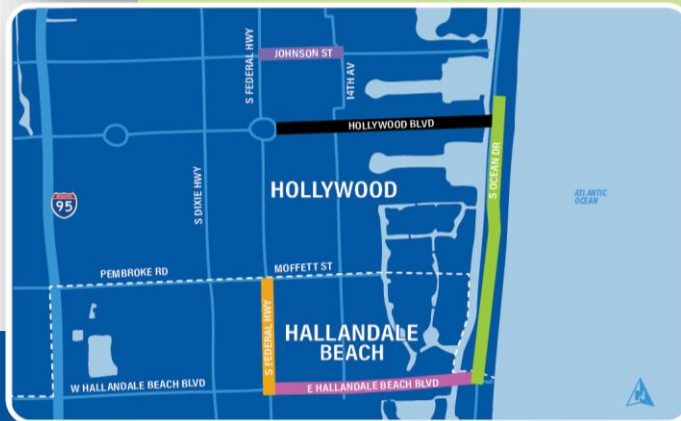
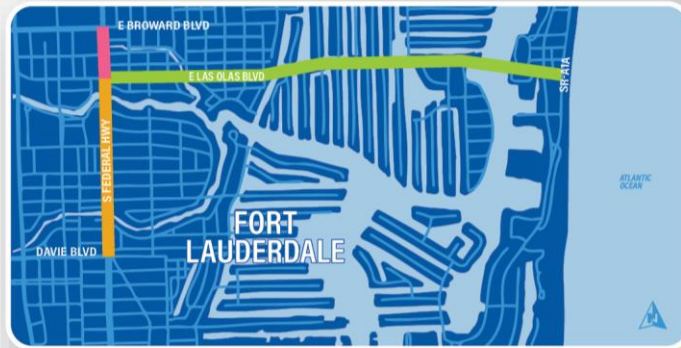
# Fort Lauderdale Resiliency Study US 1

# Agenda

- ❑ Introduction
- ❑ Project Background
- ❑ Framework
- ❑ Federal Highway – Study Area Overview, Data Collection, & Field Review
- ❑ Next Steps
- ❑ Questions & Open Discussion

# Resiliency – 2045 Metropolitan Transportation Plan (MTP)

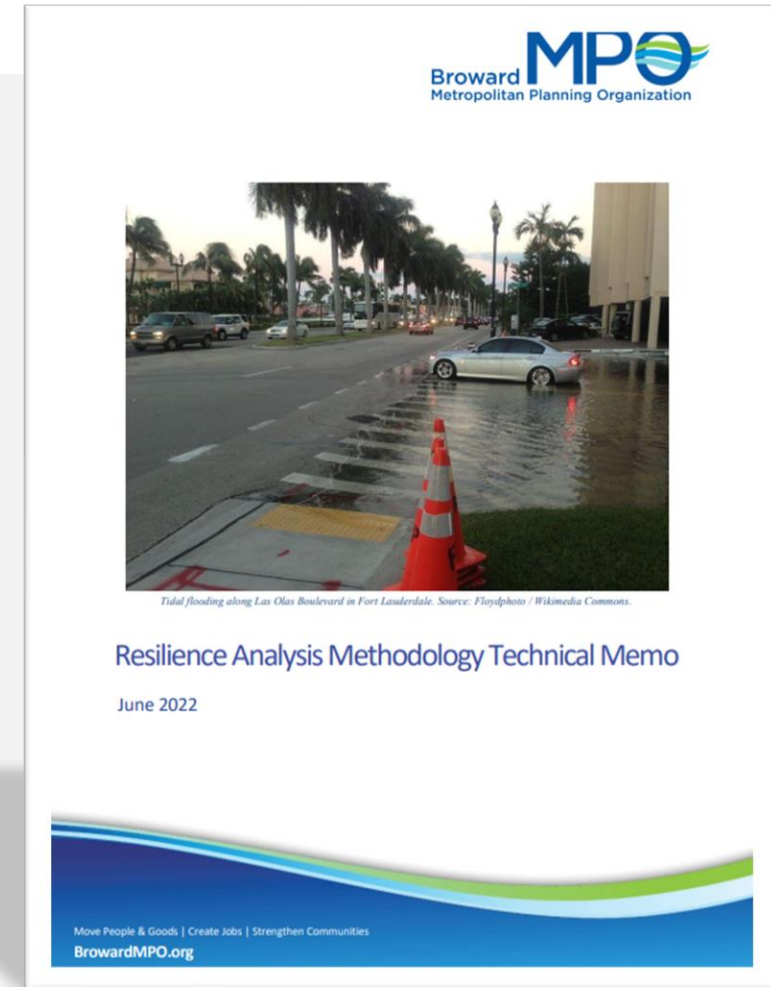
- A** E Las Olas Blvd from US-1/SR-5 to SR-A1A
- B** US-1/SR-5 from E Las Olas Blvd to SR-736/Davie Blvd
- C** US-1/SR-5 from SR-842/Broward Blvd to E Las Olas Blvd
- D** Johnson St from US-1/SR-5 to N 14th Ave
- E** SR-820/Hollywood Blvd from US-1/SR-5 to SR-A1A
- F** SR-858/Hallandale Beach Blvd from US-1/SR-5 to SR-A1A
- G** SR-A1A from S of Arizona St to SR-858/Hallandale Beach Blvd
- H** US-1/SR-5 from SR-824/Pembroke Rd to SR-858/Hallandale Beach Blvd



# Resiliency Framework - Purpose

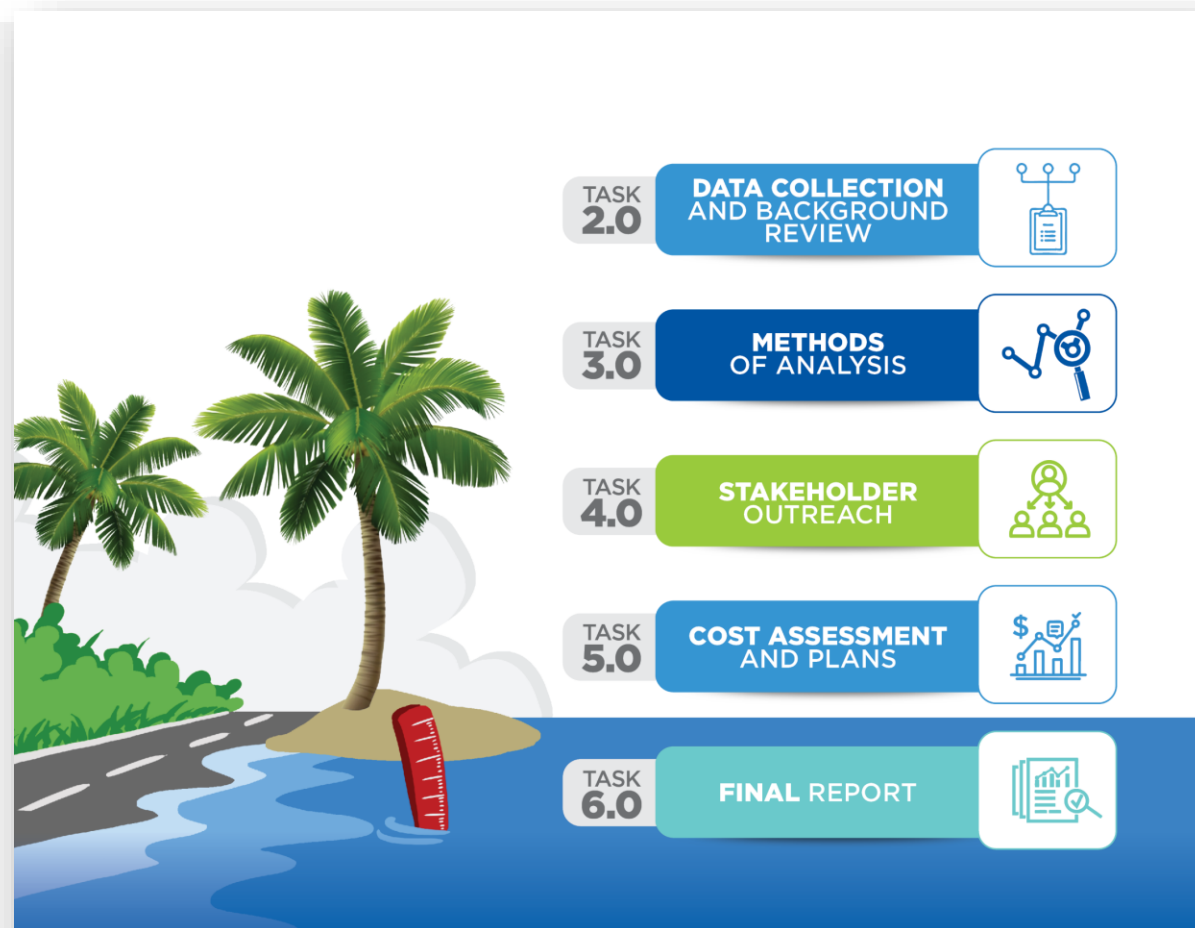
Develop a framework to further enhance transportation resilience, identify and address network vulnerabilities from climate change, and to support incorporation of preparedness into project planning, design, and construction.

Enhance and further incorporate transportation resiliency into the MPO's 2050 Metropolitan Transportation Plan (MTP) and the future efforts of our partners.



# Resiliency Framework – Development Process

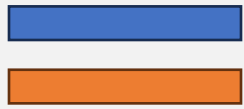
- **Builds upon prior resiliency work**
- **Technical Working Group**
  - FDOT District 4
  - South Florida Water Management District
  - South Florida Regional Planning Council
  - Florida Atlantic University
  - Broward County
  - Cities of Fort Lauderdale, Hallandale Beach, and Hollywood
- **MPO Board Endorsement (2/9/2023)**



# Resiliency Framework



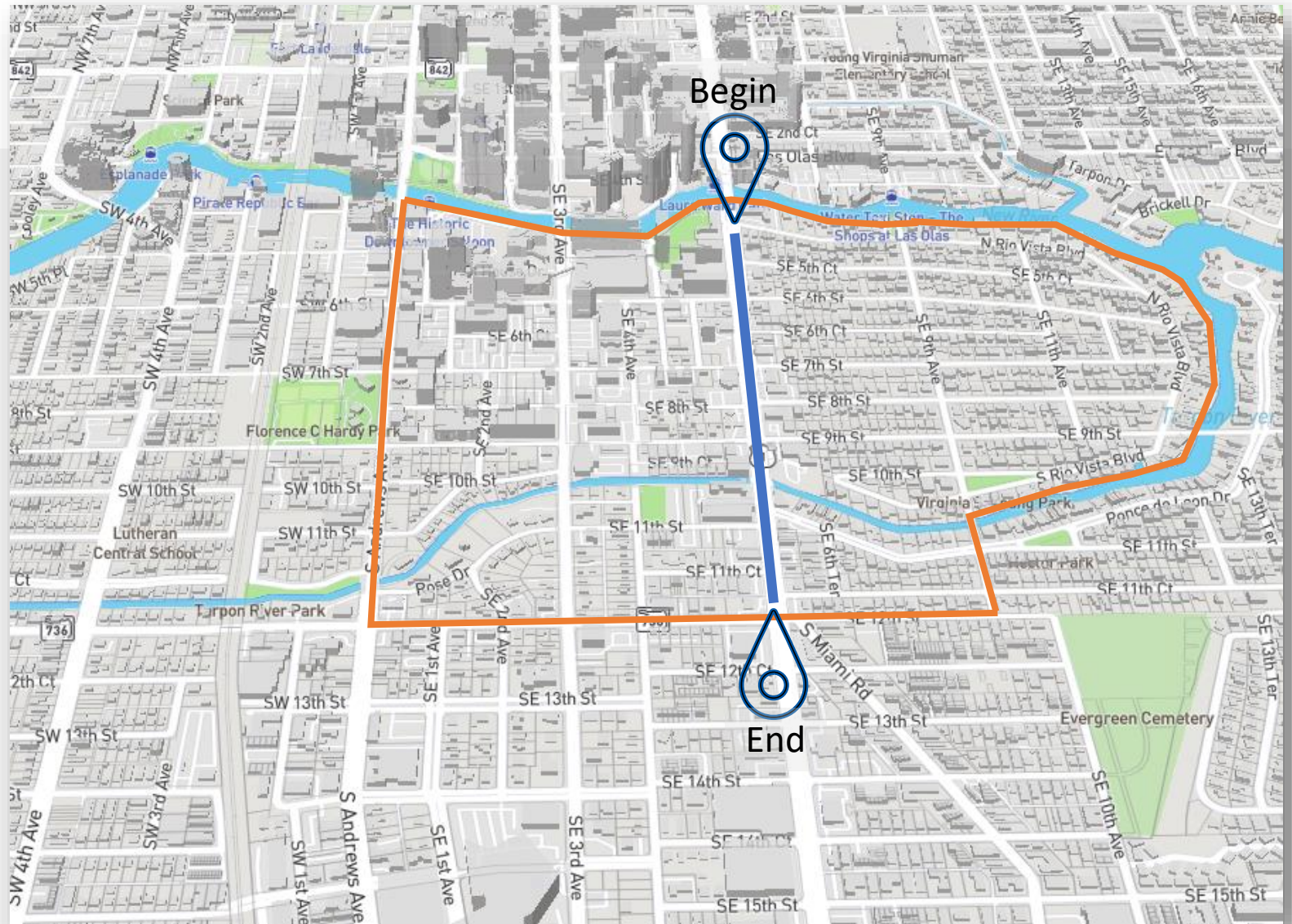
# FEDERAL HIGHWAY Influence Area



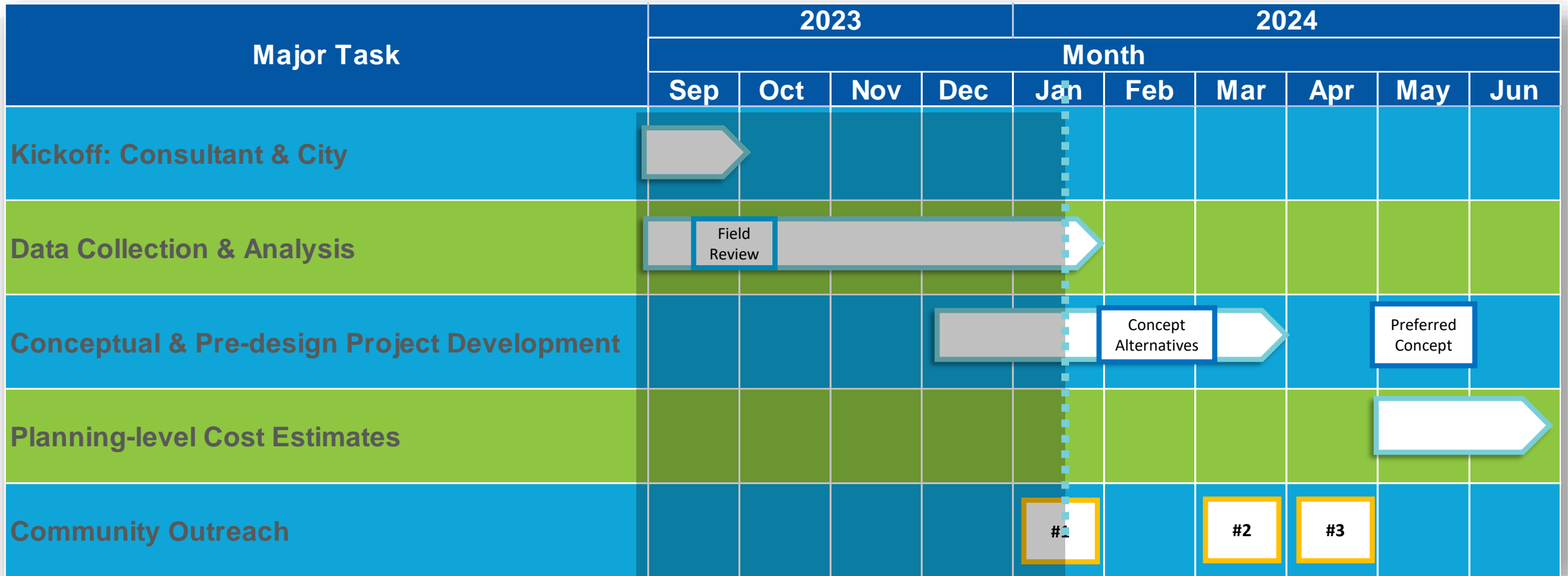
**Study Area**

**Influence Area**

- Rio Vista Civic Association
- Downtown Fort Lauderdale Civic Association
- Stormwater MP projects outside of the influence area might be evaluated for impact.



# Draft Schedule



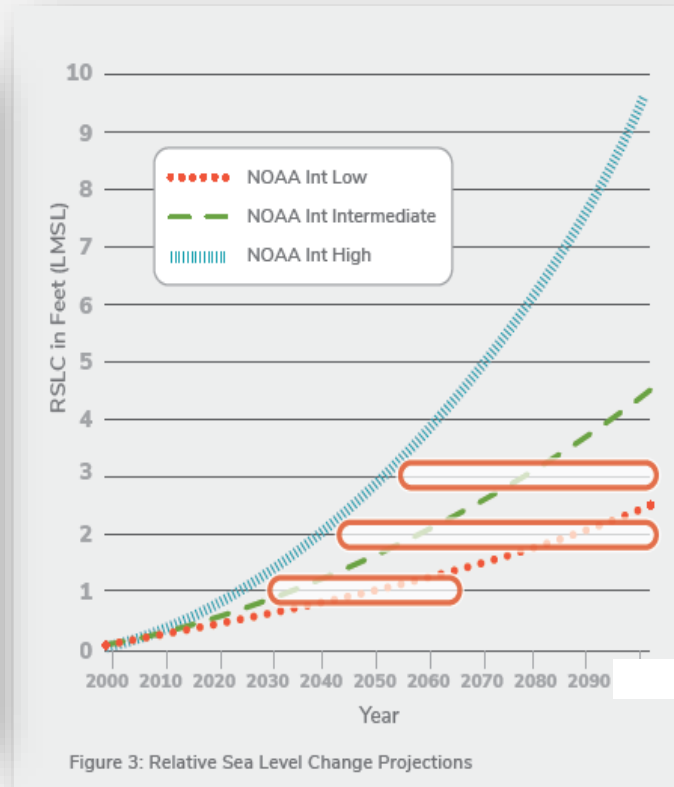
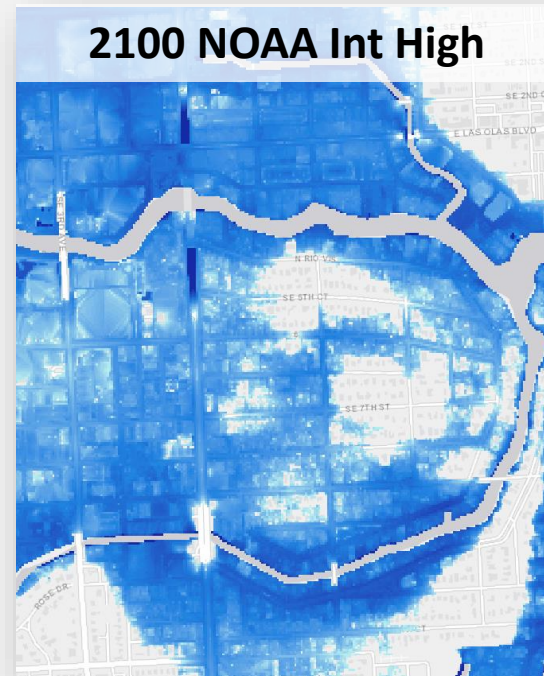
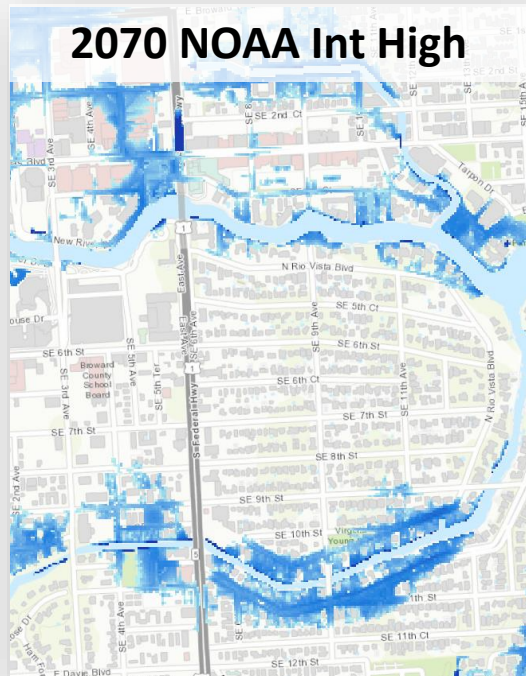
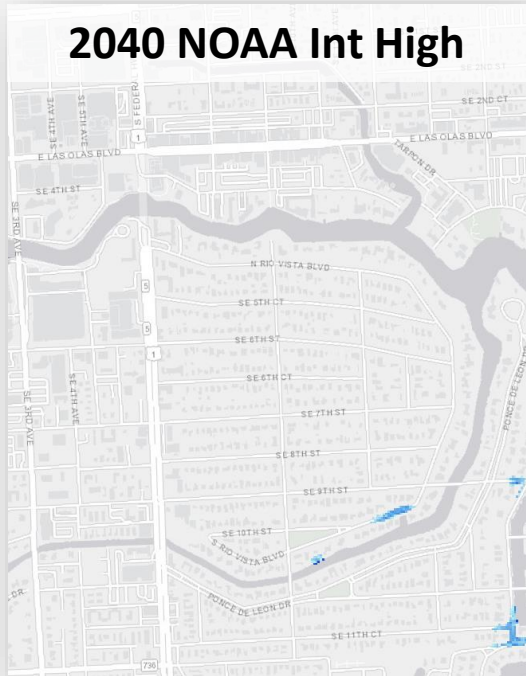
Outreach #1: Community Goals and Identification of Issues / Concerns

Outreach #2: Conceptual Alternatives for Community Feedback

Meeting #3: Presentation of Preferred Conceptual Alternative



# Federal Highway – Sea-level Rise



# Federal Highway – Storm Surge

National Hurricane Center Storm Surge Risk Maps

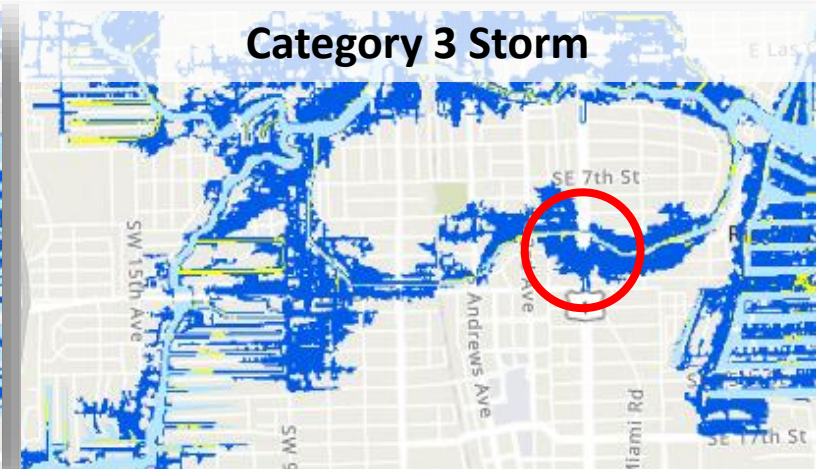
Category 1 Storm



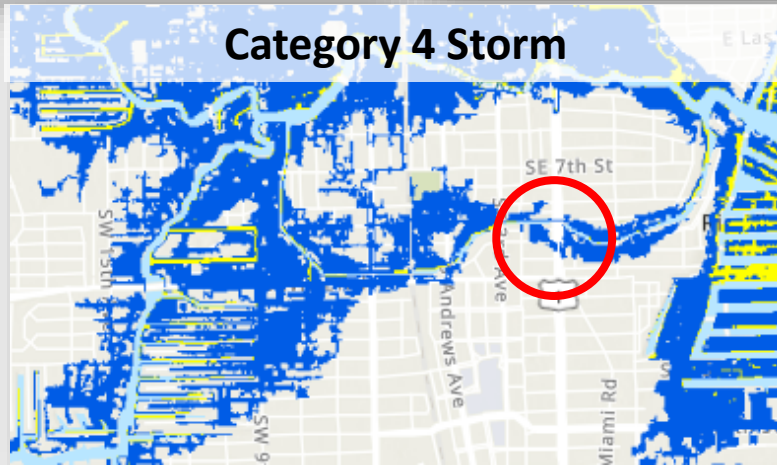
Category 2 Storm



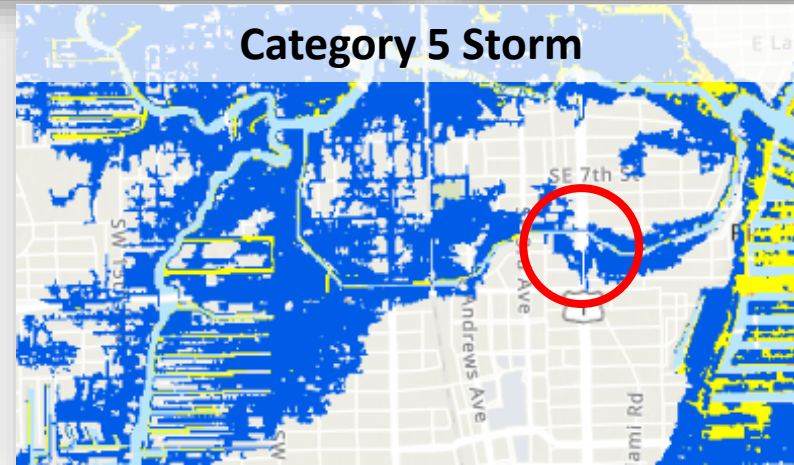
Category 3 Storm



Category 4 Storm



Category 5 Storm



# US1 FORT LAUDERDALE

## Data Collection

### **Request for Information** (*FDOT, City*)

- Survey with elevations
- Utilities- private and public
- List of planned and proposed Capital projects, policies within ½ mile of the corridor
- List of roadway assets

### **Climate Data**

- Extreme Rainfall
- Storm Surge with Sea-Level Rise
- Tidal Flooding with Sea-Level Rise
- Groundwater Table with Sea-Level Rise
- Extreme Heat

### **Socio-Economic Data**

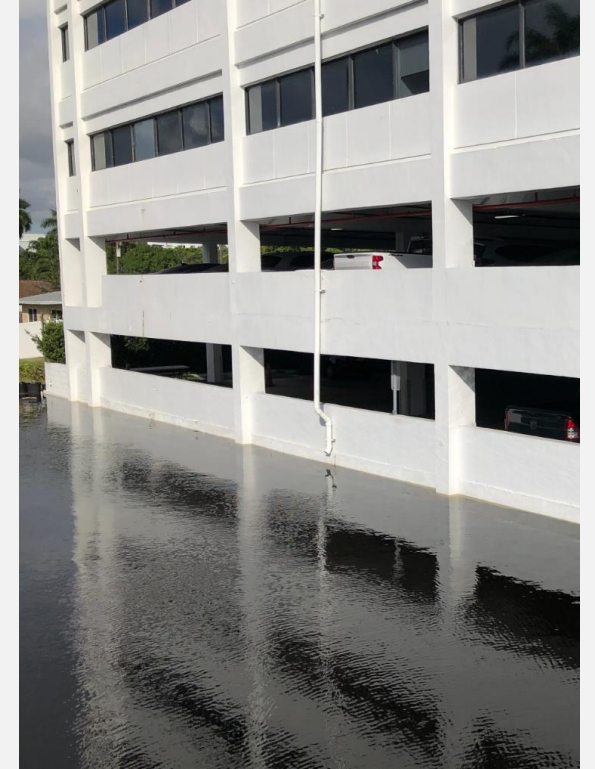
- 2020 Census data
- Climate and Economic Justice Screening Tool

### **Transportation Systems**

- Bus Stops
- Circulator and Transit Routes

# US1 FORT LAUDERDALE

## Field Review



# Next Steps

## Public Outreach Survey

- January
- March

## Stakeholder Meeting (City, FDOT, Broward County)

- ✓ September 2023
  - March
  - April

## Public Meeting

- May

<https://www.browardmpo.org/current-studies/fort-lauderdale-framework>



# Questions?

**Levi Stewart-Figueroa**  
Senior Transportation Planner  
[stewartl@browardmpo.org](mailto:stewartl@browardmpo.org)  
(954) 876-0079