



MTP Project Prioritization – Part II

MPO Board

November 14, 2018

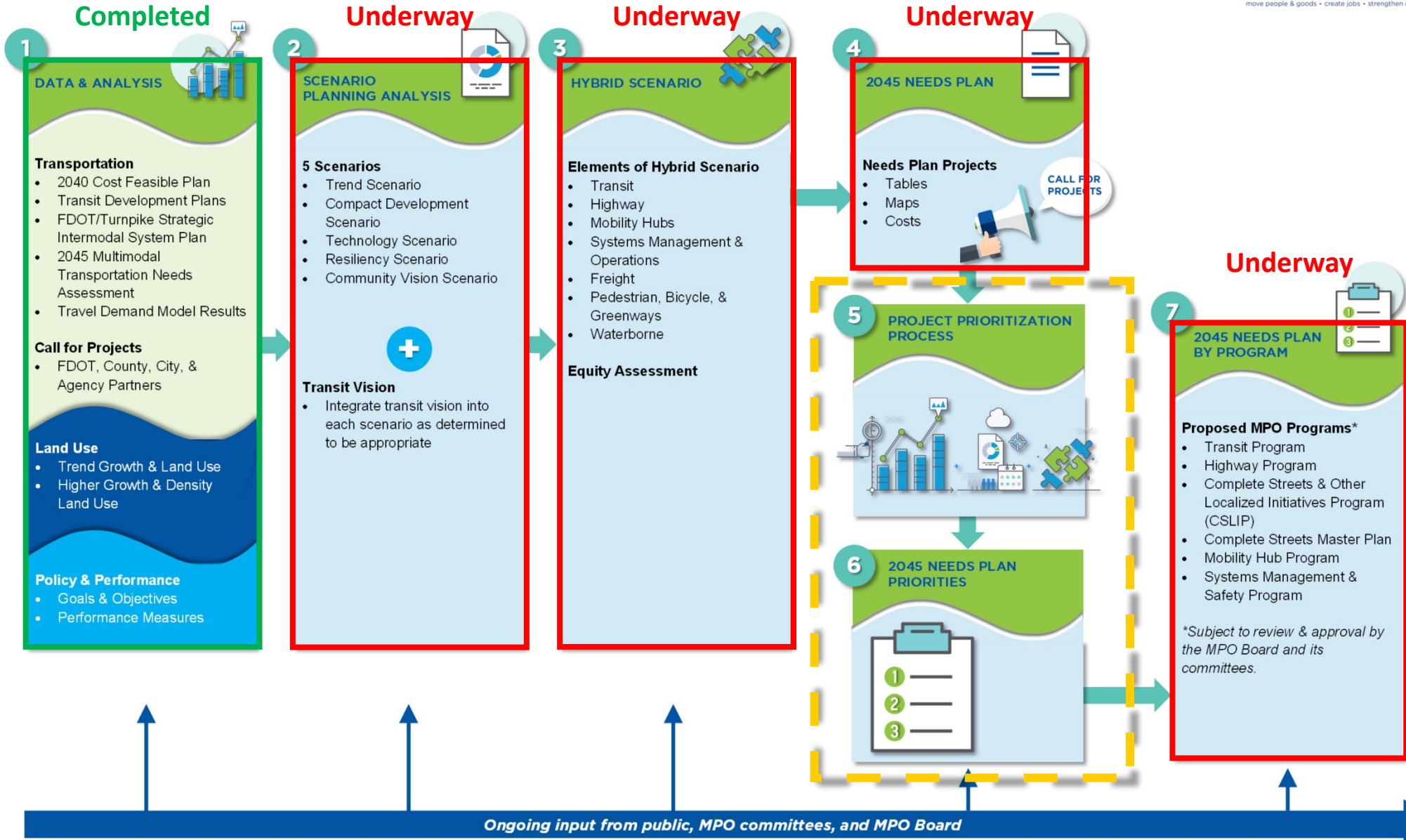
WHAT ARE YOU APPROVING TODAY?

- Approving the *Commitment 2045* Metropolitan Transportation Plan (MTP) Project Prioritization Process
- Not approving the final criteria
 - Draft criteria will be refined and calibrated with input from the TAC (Steering Committee), CAC, and MPO Board
 - Real-world evaluation of draft project list



DRAFT

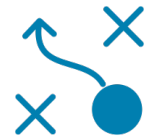
Broward MPO Commitment 2045 Metropolitan Transportation Plan Needs Assessment Process



PROJECT PRIORITIZATION: OBJECTIVES



Provide decision makers with the best information available



Align system-level planning goals, performance measures, corridor needs, and project impacts



Adapt to changing demographics, policies, and budgetary constraints



Guide investment through a “mode-neutral” assessment process

MODE-NEUTRAL PARADIGM SHIFT



PROJECT PRIORITIZATION: OVERVIEW

The project prioritization framework is intended to assist the MPO and its partner agencies in determining how well each transportation project (regardless of mode) reflects the planning factors, goals and values of our regional transportation vision.

Structured Decision Making Process

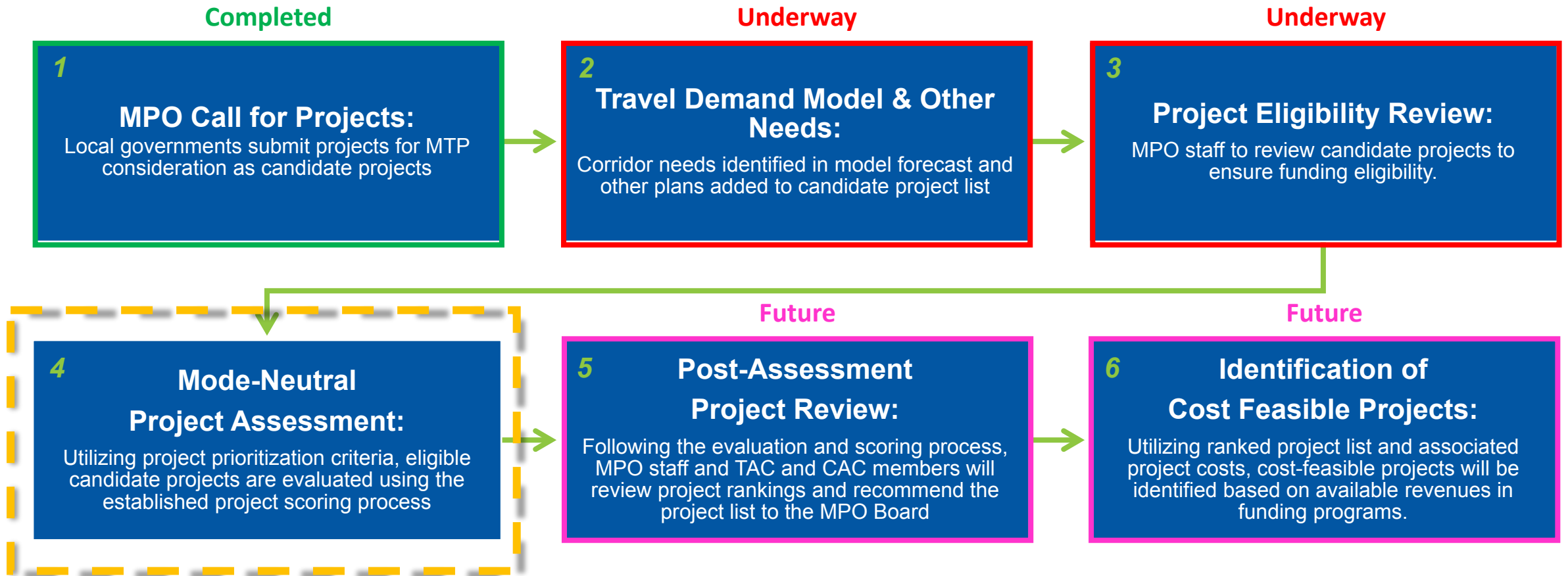
Replicable Evaluation & Assessment

Clear & Comprehensive Criteria

Objective & Quantitative Scoring

Tied to Performance Measurement

PROJECT PRIORITIZATION: PROCESS



PLANNING & PRIORITIZATION FACTORS

An approach to group and categorize project scoring criteria based on the MTP's broader scenario planning themes, new Federal Planning Factors, and connects adopted MTP Goals & Objectives to Project Investment Decisions.

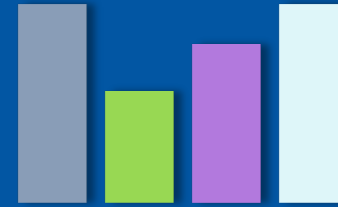
These include:

- **Mobility** – Providing high speed and reliable travel between places; tend to be longer trips.
- **Accessibility** – Providing access and circulation within higher density, mixed use places; tend to be shorter trips.
- **Safety** – Reducing the number and severity of crashes.
- **Equity** – Ensuring that benefits and impacts are shared among Broward's population.
- **Environmental Stewardship** – Protecting the natural and built environment.
- **Economic Vitality** – Supporting economic activity and businesses.

PROJECT PRIORITIZATION: FRAMEWORK

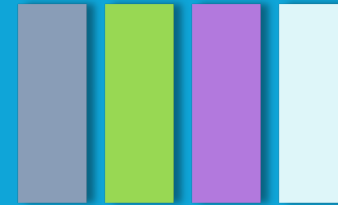
Simple Scoring

Guidelines to be established to ensure replicable scoring process.
Scoring is additive for planning factors



Normalization

Accounts for variance in max. points awarded in each factor category



Weighting

Represents overall preference of factors in relation to one another



PROJECT PRIORITIZATION: CRITERIA

Mobility

SOV Travel | VMT Reduction |
Person Capacity | Peak Period
Delay & Transit Travel Time

Accessibility

Transit Ridership | Activity Center
Access & Reliability |
Multimodal Connectivity

Safety

Multimodal Safety
(Addressing existing high-crash
locations and factors which
adversely impact safety)

Equity

Distribution of Transit Service
Frequency* | Transit Service* |
Travel Time Savings* | Multimodal
Safety* | Community Impacts

** within identified "Equity Areas"*

Environment

Sea Level Rise Mitigation |
GHG and Precursor Emissions |
Wetland/Natural Habitats |
Cultural and Historical Resources

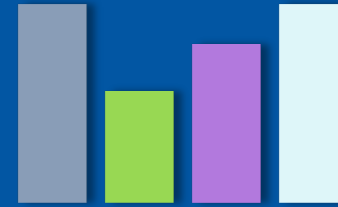
Economy

Freight & Goods Movement |
State of Good Repair |
Economic Development

PROJECT PRIORITIZATION: FRAMEWORK

Simple Scoring

Guidelines to be established to ensure replicable scoring process.
Scoring is additive for planning factors



Normalization

Accounts for variance in max. points awarded in each factor category



Weighting

Represents overall preference of factors in relation to one another



PROJECT PRIORITIZATION: WEIGHTING EXERCISE

***NOTE* THE RESULTS FROM THIS EXERCISE WILL BE USED TO INFORM THE MTP TEAM IN THE DEVELOPMENT OF THE FINAL PLANNING FACTOR WEIGHTING AND WILL BE SHARED WITH THE MPO BOARD**

PROJECT PRIORITIZATION: WEIGHTING

Planning Factors	Weighting
<p><u>Mobility</u> <i>Providing high speed and reliable travel between places; tend to be longer trips.</i></p>	
<p><u>Accessibility</u> <i>Providing access and circulation within higher density, mixed use places; tend to be shorter trips.</i></p>	
<p><u>Safety</u> <i>Reducing the number and severity of crashes.</i></p>	
<p><u>Equity</u> <i>Ensuring that benefits and impacts are shared among Broward's population.</i></p>	
<p><u>Environmental Stewardship</u> <i>Protecting the natural and built environment.</i></p>	
<p><u>Economic Vitality</u> <i>Supporting economic activity and businesses.</i></p>	
Total	100%

PROJECT PRIORITIZATION: FRAMEWORK*

Planning Factors	TAC Findings	CAC Findings	MPO Findings	LCB Findings	CM Findings	Avg. Findings
<u>Mobility</u> <i>Providing high speed and reliable travel between places; tend to be longer trips.</i>	19.0%	20.3%	22.0%	19.7%	___%	___%
<u>Accessibility</u> <i>Providing access and circulation within higher density, mixed use places; tend to be shorter trips.</i>	18.3%	19.6%	18.0%	25.4%	___%	___%
<u>Safety</u> <i>Reducing the number and severity of crashes.</i>	19.8%	20.6%	17.0%	17.5%	___%	___%
<u>Equity</u> <i>Ensuring that benefits and impacts are shared among Broward's population.</i>	15.0%	14.0%	13.0%	15.0%	___%	___%
<u>Environmental Stewardship</u> <i>Protecting the natural and built environment.</i>	12.4%	13.4%	12.0%	13.2%	___%	___%
<u>Economic Vitality</u> <i>Supporting economic activity and businesses.</i>	15.5%	12.1%	18.0%	9.2%	___%	___%
	100%**	100%**	100%**	100%**	100%**	100%**

* MPO Board and City Manager feedback is still ongoing and will be finalized at the Nov. 14th meeting. Results may change

**Results may not add up to 100 due to rounding

NEXT STEPS

- Project-level data gathering
- Begin initial assessment and scoring process
- Draft list of prioritized projects
- Coordination with regional modeling (SERPM) team



WHAT ARE YOU APPROVING TODAY?

- Approving the *Commitment 2045* Metropolitan Transportation Plan (MTP) Project Prioritization Process
- Not approving the final criteria
 - Draft criteria will be refined and calibrated with input from the TAC (Steering Committee), CAC, and MPO Board
 - Real-world evaluation of draft project list

