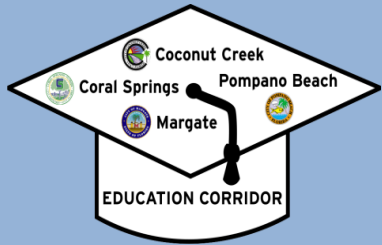
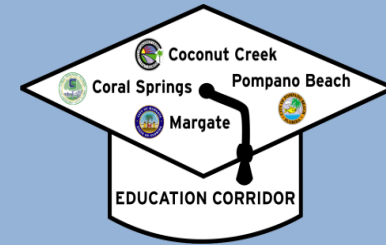




Pompano Education Corridor Transit Study



September 3, 2015





Agenda Overview

- **Update on Public Involvement**
 - Results from ongoing survey
 - Outreach to Broward College
- **Plan and Materials for September Public Meetings**
- **Multi-modal Land Use Analysis Approach**
 - Walk accessibility
 - Transit accessibility
- **Tech Memos 2 and 3 comments**
- Adjourn



broward **MPO**
metropolitan planning organization



Update on Public Involvement



Public Involvement Update – Survey Results

- **14 total responses (as of Thu 7/16)**
- **50+ total responses (as of Tue 8/25)**
 - All English responses
 - Mostly age 18 and under
 - Location data on where people live and where they work/visit
- **70% of respondents never ride the bus**
- **Broward College students live in:**
 - North Lauderdale
 - Pompano Beach
 - Deerfield Beach
 - Margate
 - Coconut Creek
 - Coral Springs

I would take the bus more if...

...the bus came more frequently

...the bus stopped closer to where I live/where I need to go

...there are safety/security improvements on buses

...I don't have to transfer to a second bus



Survey Results - Location data from August responses not yet entered

Legend About Layers

Broward Community Gateway

Find address or place

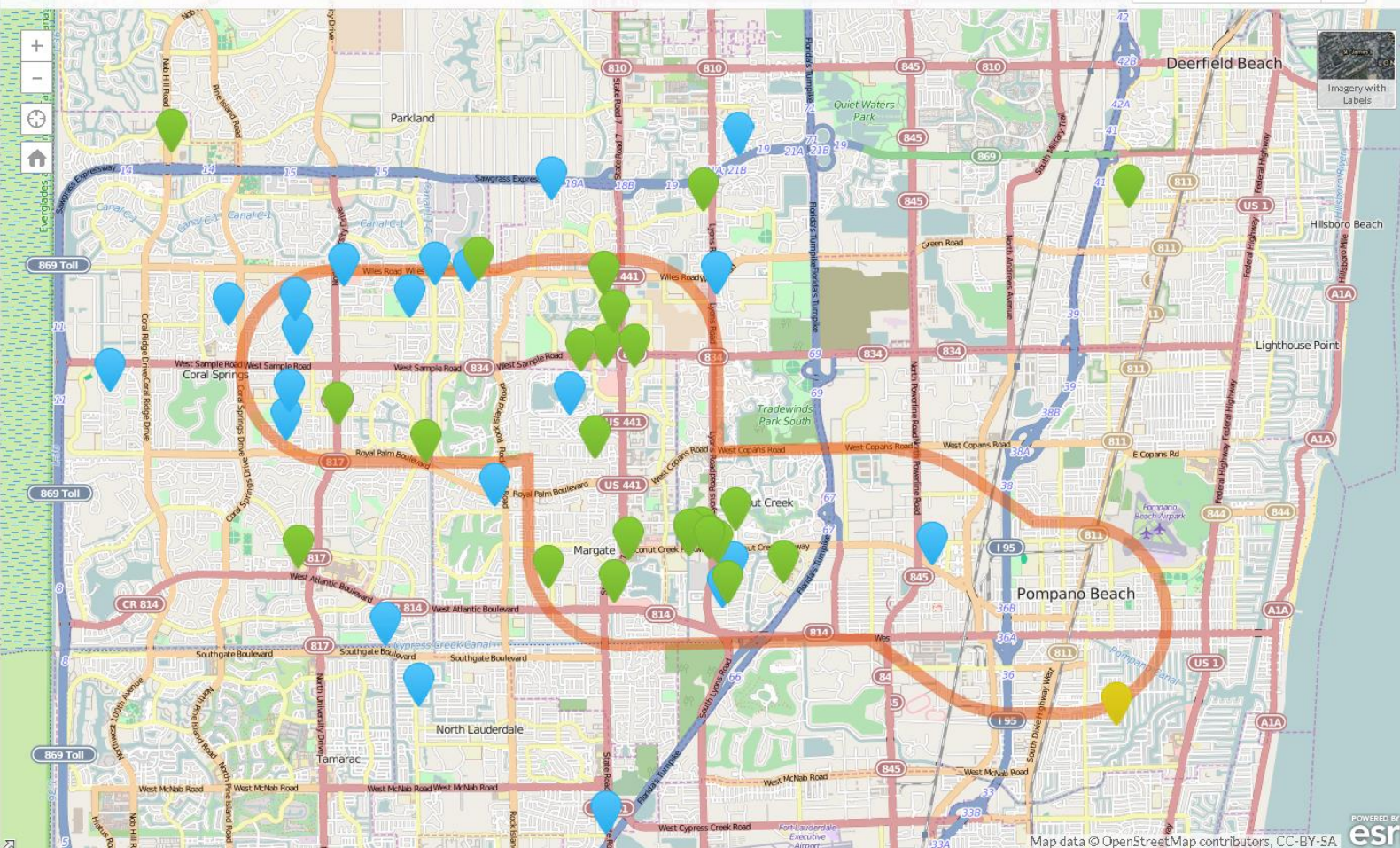
Legend

What places feel unsafe or need improvement

Where do you work

Where do you live

Study Area





Public Involvement Update - Additional Outreach

Canvased Broward College First & Second Day of Class

- More than tripled the response rate
- Cleanliness and weather protection were mentioned frequently

September Public Meetings

- Wednesday September 30, 2015
- 6:00 to 7:00 PM
- Larkins Community Center, Pompano Beach
- 2nd location and date TBD
- One-on-one conversations with project team
- Open house format – boards, flipcharts, comment cards
- Showcase alternatives and evaluation criteria
- Ask public “What have we missed?”
- Which features of the alternatives do you like the best?
- Not asking participants to pick an alternative

EDUCATION CORRIDOR TRANSIT STUDY

A new transit circulator may be coming to your community to help you get to your college and job, quicker than your current public transportation options at times that work for you.

We need your help! Fill out this anonymous survey to let us know where you are, where you go, and when you go. This will help us tailor a route that works for you!



Take the survey!

<https://www.surveymonkey.com/r/EdCorridorTransit> (in English)

<https://es.surveymonkey.com/r/2SMY3CR> (En Español)





broward **MPO**
metropolitan planning organization



Draft Plan and Materials for September Public Meeting(s)

Pompano Education Corridor Transit Study



Cities' Transit Service Objectives

1. Improved Transit Access for Educational Institutions

- Direct Service; inter-city service

2. Support for Planned Development

- City Centers, Community Redevelopment Agencies (CRA)
- Improved walkability, complete streets – revitalize SR 7
- Enhanced Mobility Hubs

3. Continuous East – West Transit Service

- Bus (that) makes a complete end-to-end connection from a western to an eastern terminus
- Eliminate forced transfers at SR 7

Pompano Education Corridor Transit Study



Study Background

2012 – City of Pompano Beach awarded a Transportation, Community, and System Preservation (TCSP) Grant from the FHWA: **\$968,948**



A portion of the grant is used to fund this transit study that will examine the long-range transit opportunities that could better link the four cities (**\$200,000**)

Link educational and employment opportunities within the corridor

Analyze various transit alternatives

Identify funding for future implementation



Pompano Education Corridor Transit Study



Study Schedule

| | Jan | Feb | Mar | Apr | May | June | July | Aug | Sep | Oct | Nov | Dec |
|--|-----|-----|-----|-----|-----|------|------|-----|-----|-----|-----|-----|
| Data Collection | █ | | | | | | | | | | | |
| Analysis of Transit and Shuttle Options | | | | █ | | | | | | | | |
| Service Plans, Capital and O&M Cost Estimates | | | | | █ | | | | | | | |
| Recommend Transit Supportive Land Uses | | | | | | | █ | | | | | |
| Evaluation of Transit and Shuttle Options | | | | | | | █ | | | | | |
| Funding Opportunities and Organizational Strategies | | | | | | | | | █ | | | |
| Implementation Plan and Final Report | | | | | | | | | | | █ | |
| Public Involvement | | | | | | █ | | | | | | |
| Project Management | █ | | | | | | | | | | | |

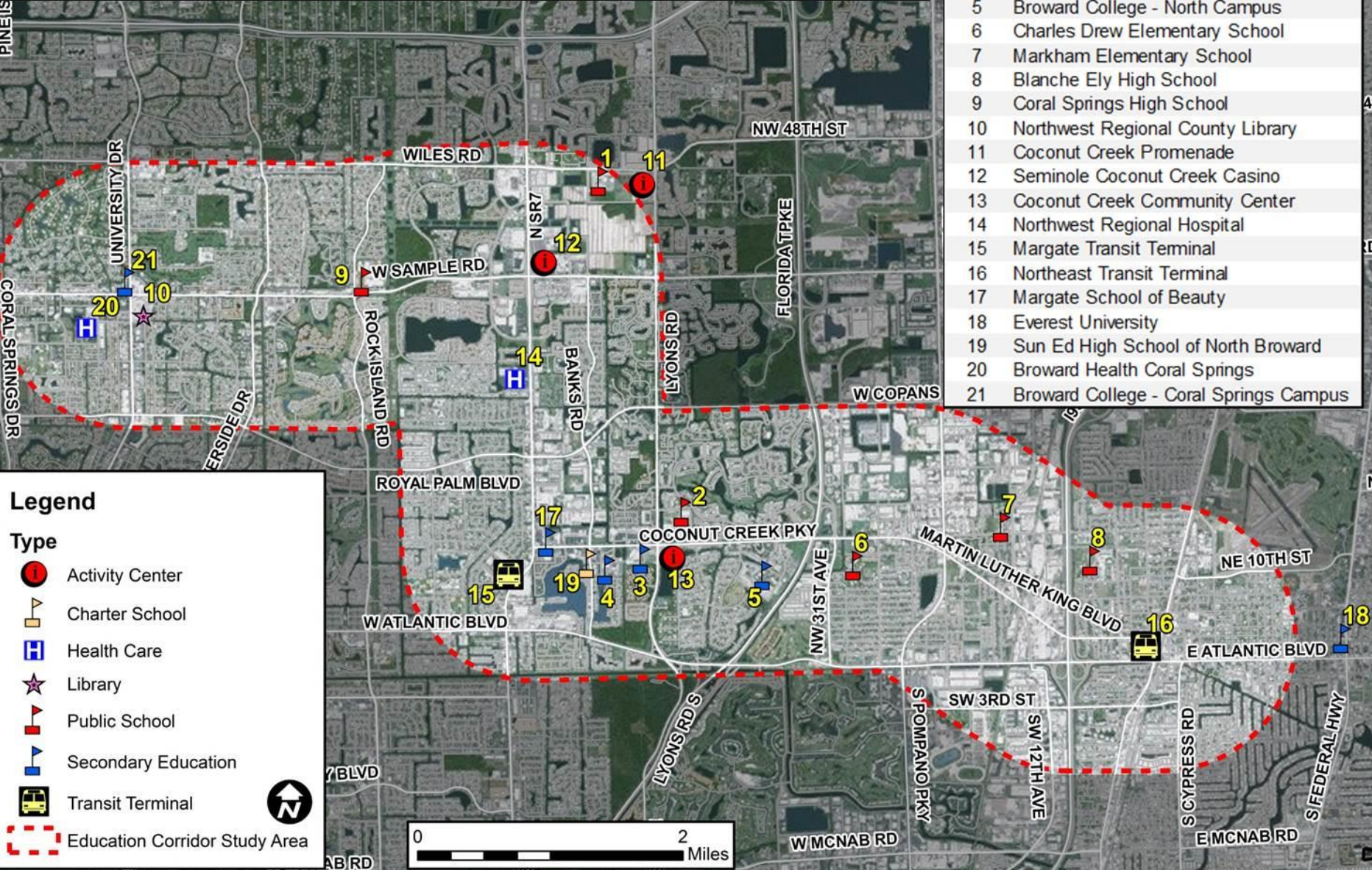
Pompano Education Corridor Transit Study – Study Area



broward **MPO**
metropolitan planning organization

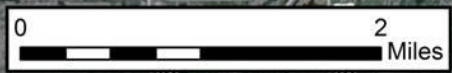


| ID | Destination |
|----|--|
| 1 | Monarch High School |
| 2 | Coconut Creek High School |
| 3 | Dave Thomas Educational Center |
| 4 | Atlantic Vocational Technical Center |
| 5 | Broward College - North Campus |
| 6 | Charles Drew Elementary School |
| 7 | Markham Elementary School |
| 8 | Blanche Ely High School |
| 9 | Coral Springs High School |
| 10 | Northwest Regional County Library |
| 11 | Coconut Creek Promenade |
| 12 | Seminole Coconut Creek Casino |
| 13 | Coconut Creek Community Center |
| 14 | Northwest Regional Hospital |
| 15 | Margate Transit Terminal |
| 16 | Northeast Transit Terminal |
| 17 | Margate School of Beauty |
| 18 | Everest University |
| 19 | Sun Ed High School of North Broward |
| 20 | Broward Health Coral Springs |
| 21 | Broward College - Coral Springs Campus |



Legend

- Type**
- Activity Center
 - Charter School
 - Health Care
 - Library
 - Public School
 - Secondary Education
 - Transit Terminal
 - Education Corridor Study Area

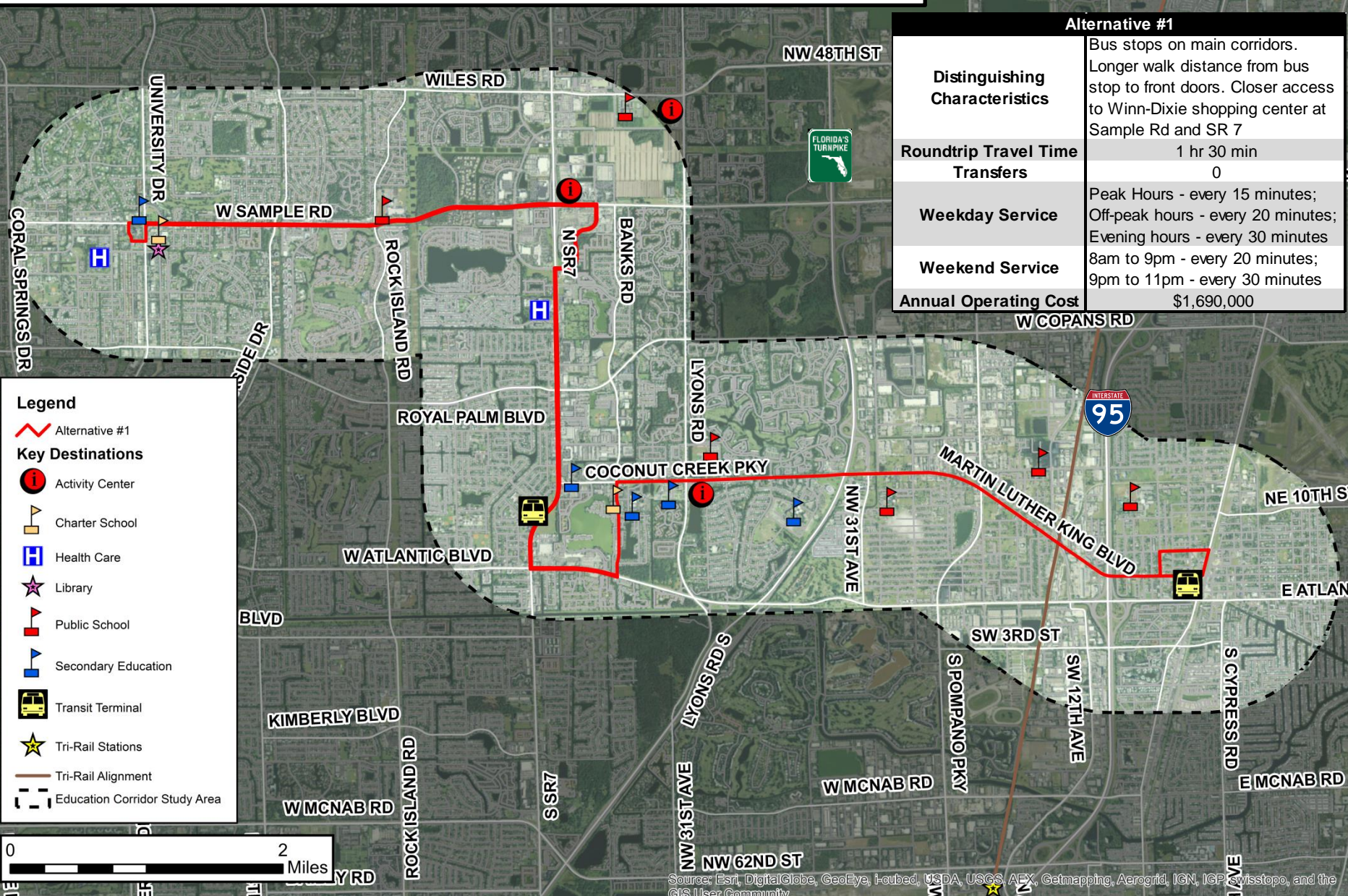


Source: Esri, DigitalGlobe, GeoEye, i-cubed, USDA, USGS, AEX, Getmapping, Aerogrid, IGN, IGP, swisstopo, and the GIS User Community

Pompano Education Corridor Transit Study – Alternative #1



broward **MPO**
metropolitan planning organization



Legend

- Alternative #1
- Key Destinations**
- Activity Center
- Charter School
- Health Care
- Library
- Public School
- Secondary Education
- Transit Terminal
- Tri-Rail Stations
- Tri-Rail Alignment
- Education Corridor Study Area

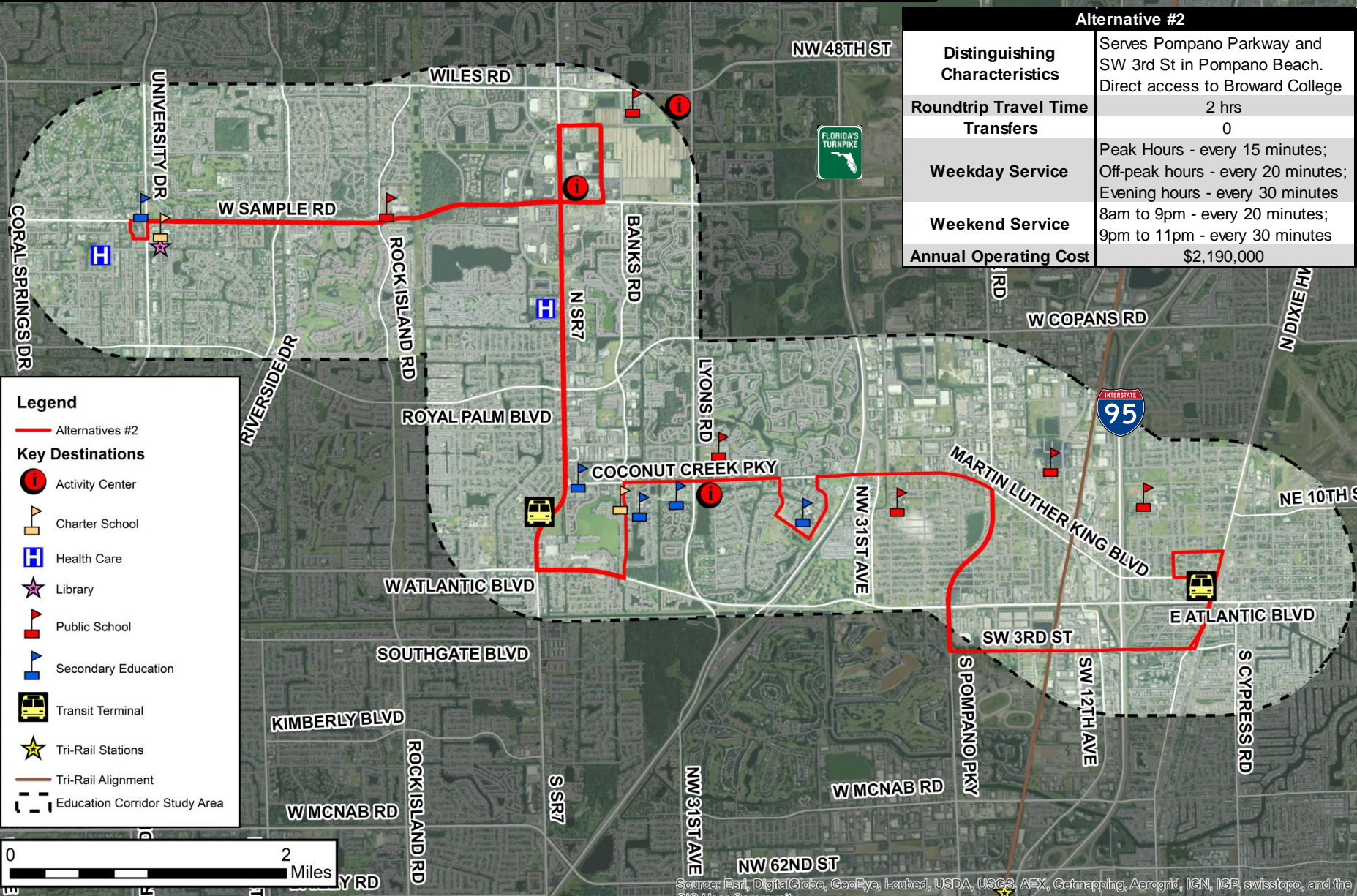
| Alternative #1 | |
|--|--|
| Distinguishing Characteristics | Bus stops on main corridors. Longer walk distance from bus stop to front doors. Closer access to Winn-Dixie shopping center at Sample Rd and SR 7 |
| Roundtrip Travel Time Transfers | 1 hr 30 min 0 |
| Weekday Service | Peak Hours - every 15 minutes; Off-peak hours - every 20 minutes; Evening hours - every 30 minutes |
| Weekend Service | 8am to 9pm - every 20 minutes; 9pm to 11pm - every 30 minutes |
| Annual Operating Cost | \$1,690,000 |

Source: Esri, DigitalGlobe, GeoEye, I-rubed, USDA, USGS, AEX, Getmapping, Aerogrid, IGN, IGP, swisstopo, and the GIS User Community

Pompano Education Corridor Transit Study – Alternative #2



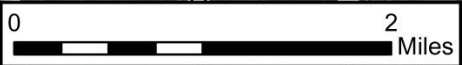
broward **MPO**
metropolitan planning organization



| Alternative #2 | |
|--------------------------------|--|
| Distinguishing Characteristics | Serves Pompano Parkway and SW 3rd St in Pompano Beach. Direct access to Broward College |
| Roundtrip Travel Time | 2 hrs |
| Transfers | 0 |
| Weekday Service | Peak Hours - every 15 minutes; Off-peak hours - every 20 minutes; Evening hours - every 30 minutes |
| Weekend Service | 8am to 9pm - every 20 minutes; 9pm to 11pm - every 30 minutes |
| Annual Operating Cost | \$2,190,000 |

Legend

- Alternatives #2
- Key Destinations**
- Activity Center
- Charter School
- Health Care
- Library
- Public School
- Secondary Education
- Transit Terminal
- Tri-Rail Stations
- Tri-Rail Alignment
- Education Corridor Study Area

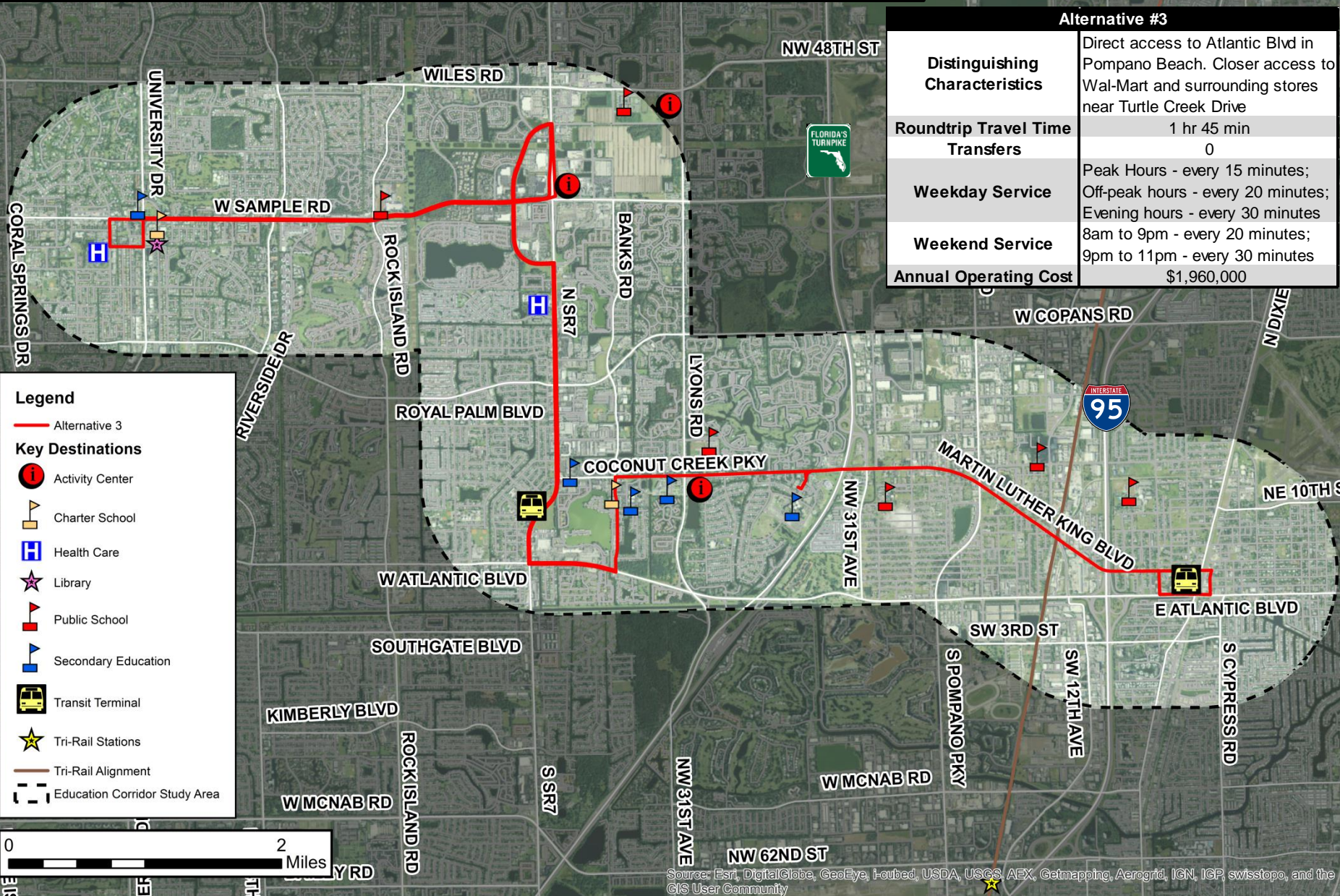


Source: Esri, DigitalGlobe, GeoEye, I-rubed, USDA, USGS, AEX, Getmapping, Aerogrid, IGN, IGP, swisstopo, and the GIS User Community

Pompano Education Corridor Transit Study – Alternative #3



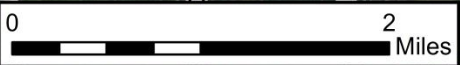
broward **MPO**
metropolitan planning organization



Legend

- Alternative 3
- Key Destinations**
- Activity Center
- Charter School
- H Health Care
- ★ Library
- ▴ Public School
- ▴ Secondary Education
- Transit Terminal
- ★ Tri-Rail Stations
- Tri-Rail Alignment
- Education Corridor Study Area

| Alternative #3 | |
|---------------------------------------|---|
| Distinguishing Characteristics | Direct access to Atlantic Blvd in Pompano Beach. Closer access to Wal-Mart and surrounding stores near Turtle Creek Drive |
| Roundtrip Travel Time | 1 hr 45 min |
| Transfers | 0 |
| Weekday Service | Peak Hours - every 15 minutes; Off-peak hours - every 20 minutes; |
| Weekend Service | Evening hours - every 30 minutes 8am to 9pm - every 20 minutes; 9pm to 11pm - every 30 minutes |
| Annual Operating Cost | \$1,960,000 |



Source: Esri, DigitalGlobe, GeoEye, I-rubed, USDA, USGS, AEX, Getmapping, Aerogrid, IGN, IGP, swisstopo, and the GIS User Community

Pompano Education Corridor Transit Study – Route Deviations in Coconut Creek



broward **MPO**
metropolitan planning organization



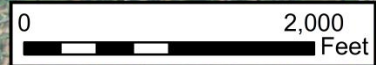
ROCK ISLAND RD

W SAMPLE RD

BANKS RD

N SR7

- Legend**
- Alternative 1
 - Alternative 2
 - Alternative 3

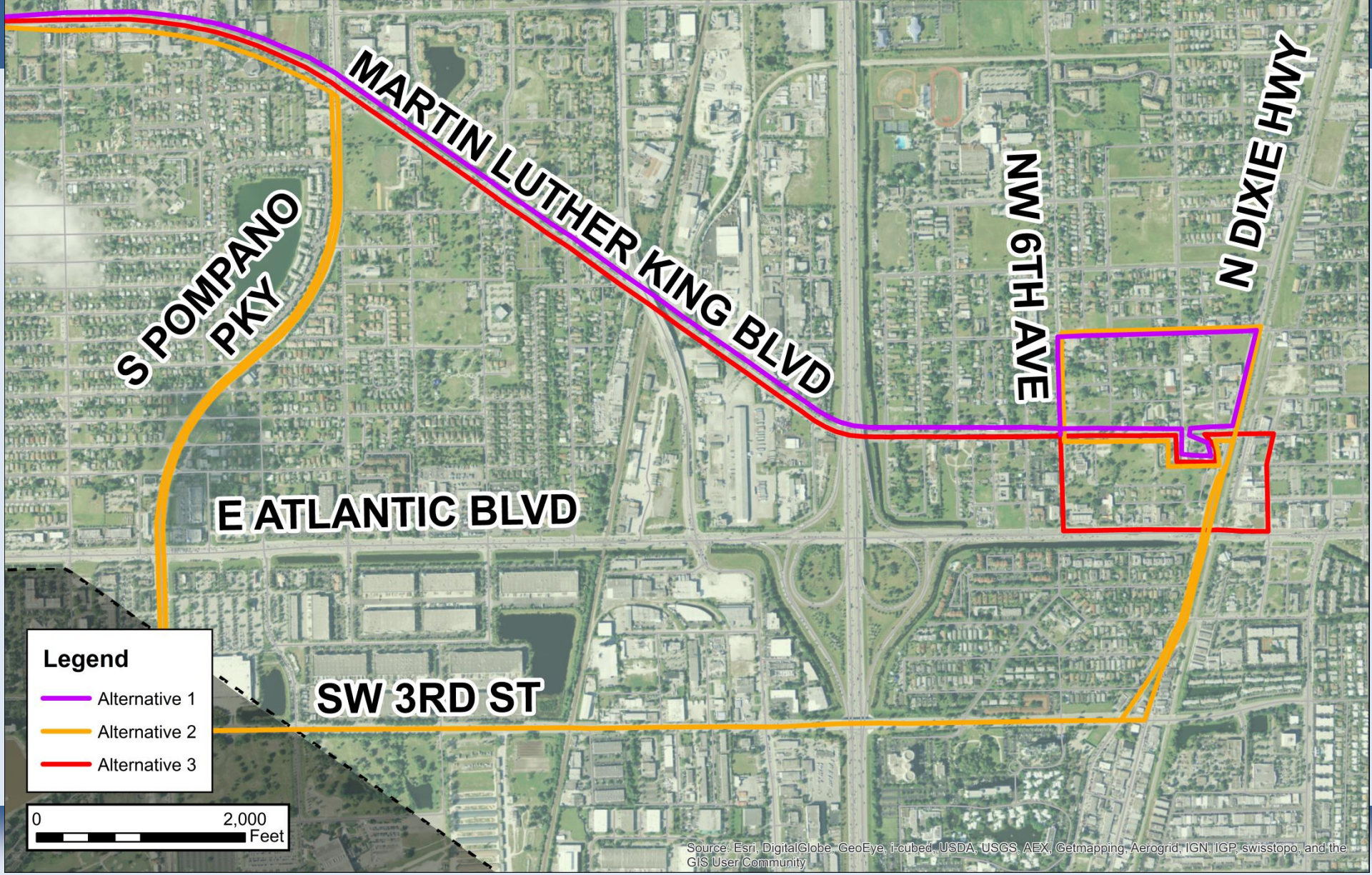


Source: Esri, DigitalGlobe, GeoEye, i-cubed, USDA, USGS, AEX, Getmapping, Aerogrid, IGN, IGP, swisstopo, and the GIS User Community

Pompano Education Corridor Transit Study – Route Deviations in Pompano Beach



broward **MPO**
metropolitan planning organization



Legend

- Alternative 1
- Alternative 2
- Alternative 3



Source: Esri, DigitalGlobe, GeoEye, i-cubed, USDA, USGS, AEX, Getmapping, Aerogrid, IGN, IGP, swisstopo, and the GIS User Community



broward **MPO**
metropolitan planning organization



Multi-modal Land Use Analysis Approach



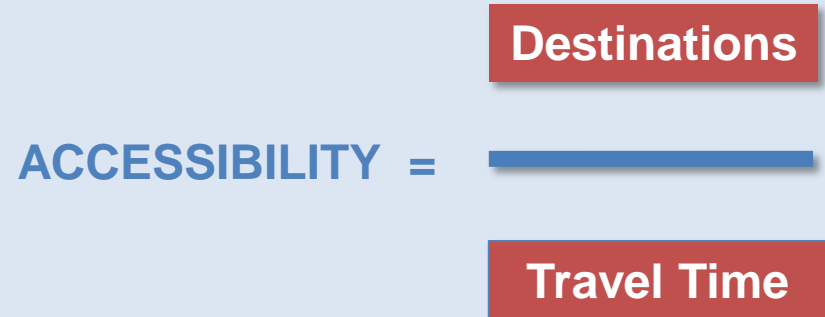
Land Use Analysis – Multimodal Accessibility

- **Access to Education and Employment opportunities**

- Study purpose: increase access to opportunities

- **Accessibility Analysis**

- Identify ‘hot spots’ and ‘cool spots’ of accessibility
 - Areas lacking in destinations nearby
 - Areas lacking in network connectivity
- Evaluate existing plans, policies, and land development regulations
- Recommend changes to increase accessibility and support the future transit service



Destination Inputs:

Key Destinations

- Employment
- Population
- Individual job sectors
- Socio-economic groups

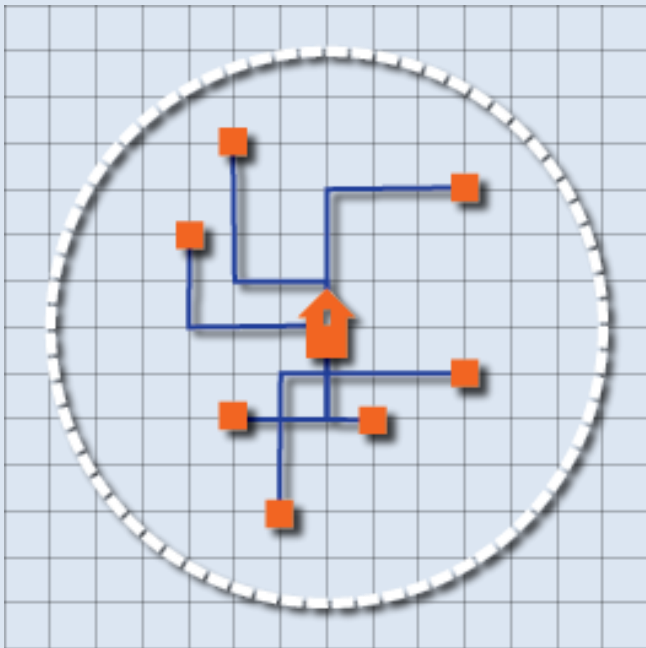
Travel Time Inputs:

- Transportation network
- Travel mode
- Distance Decay

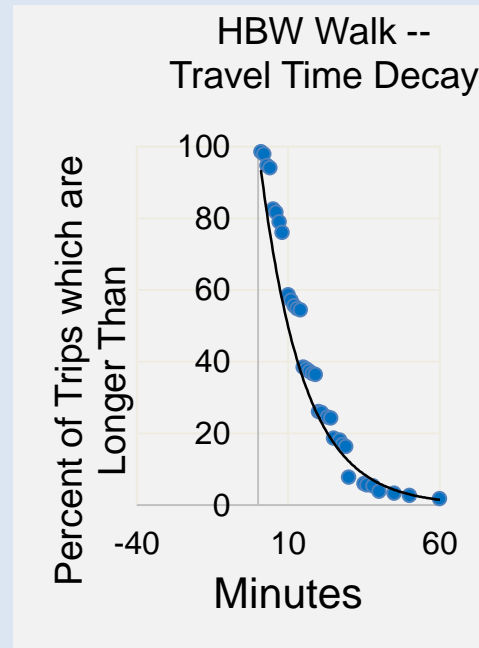


Accessibility Score Calculation

Step 1: Find opportunities within reach



Step 2: Calculate “value” of each opportunity

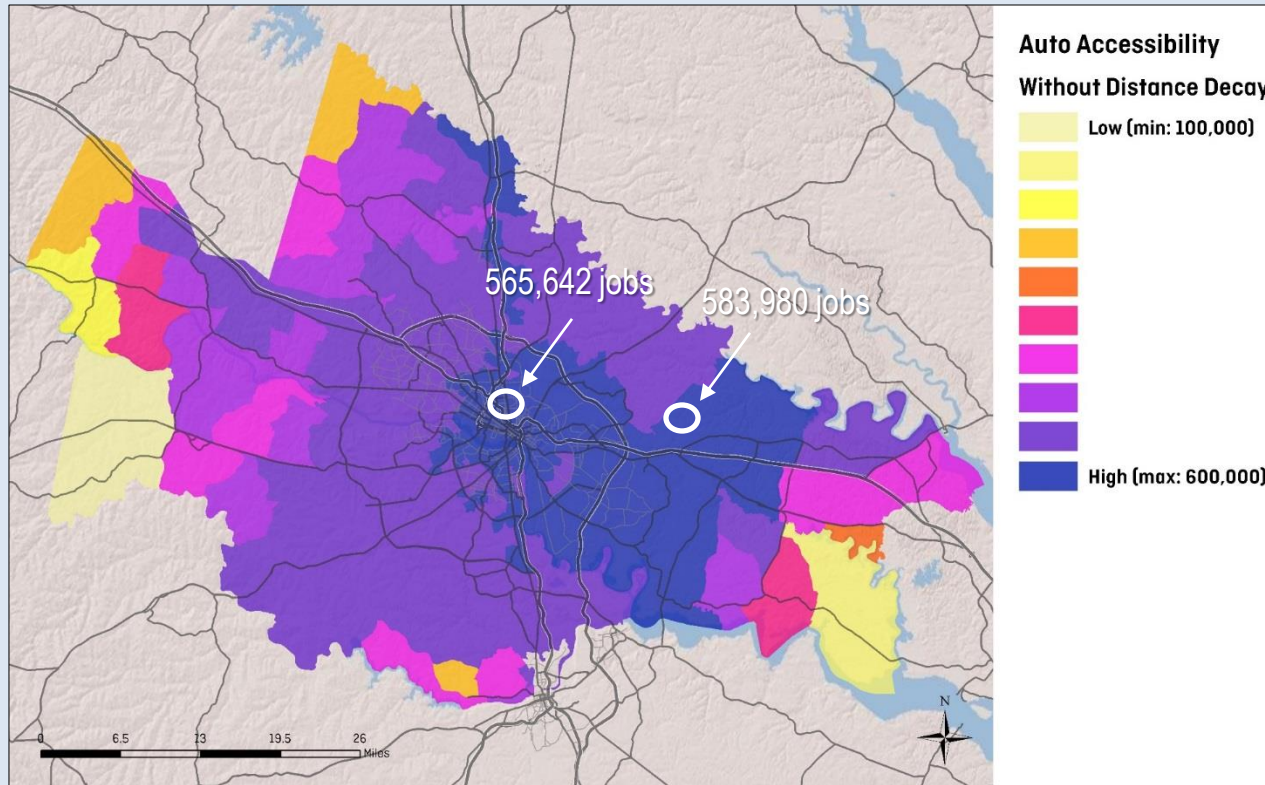


- Accessibility score is the sum of **all opportunities reachable in a period of time**
- Accessibility score also includes a **decay factor** based on travel survey data showing that people value closer opportunities more highly

MEASURING ACCESSIBILITY



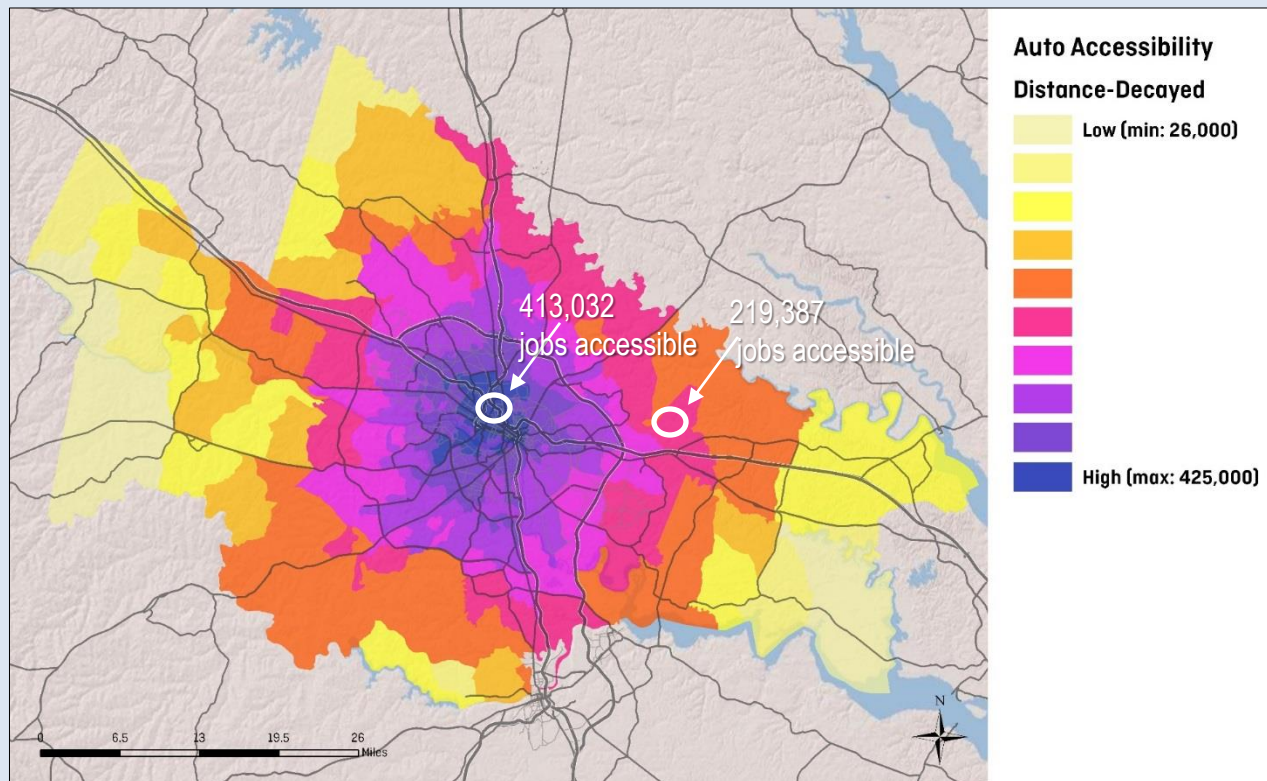
The Role of Distance Decay



- Accessibility in Richmond region – Without Decay
- Without distance decay, the highway network is a primary influencer of access to opportunities

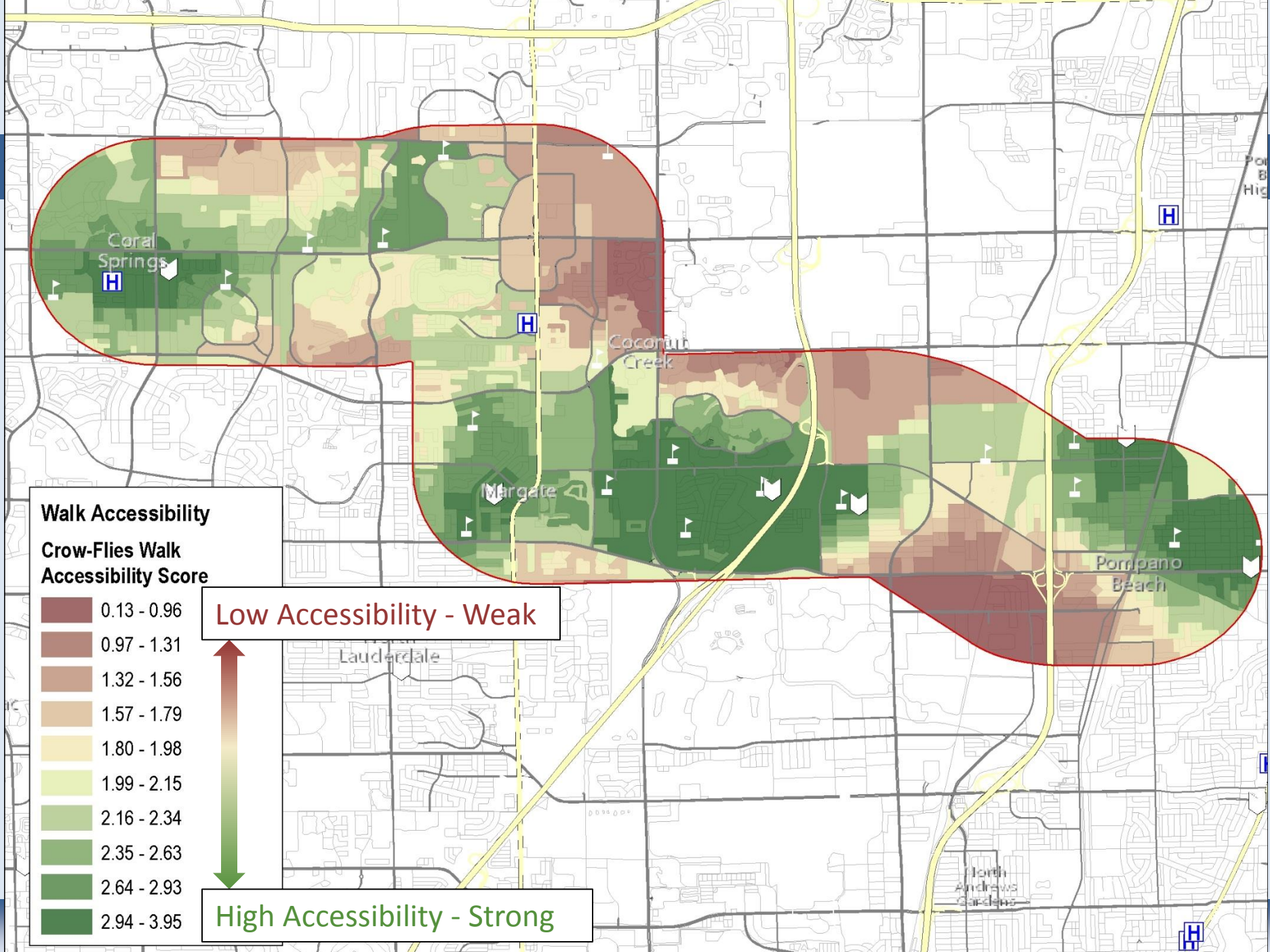


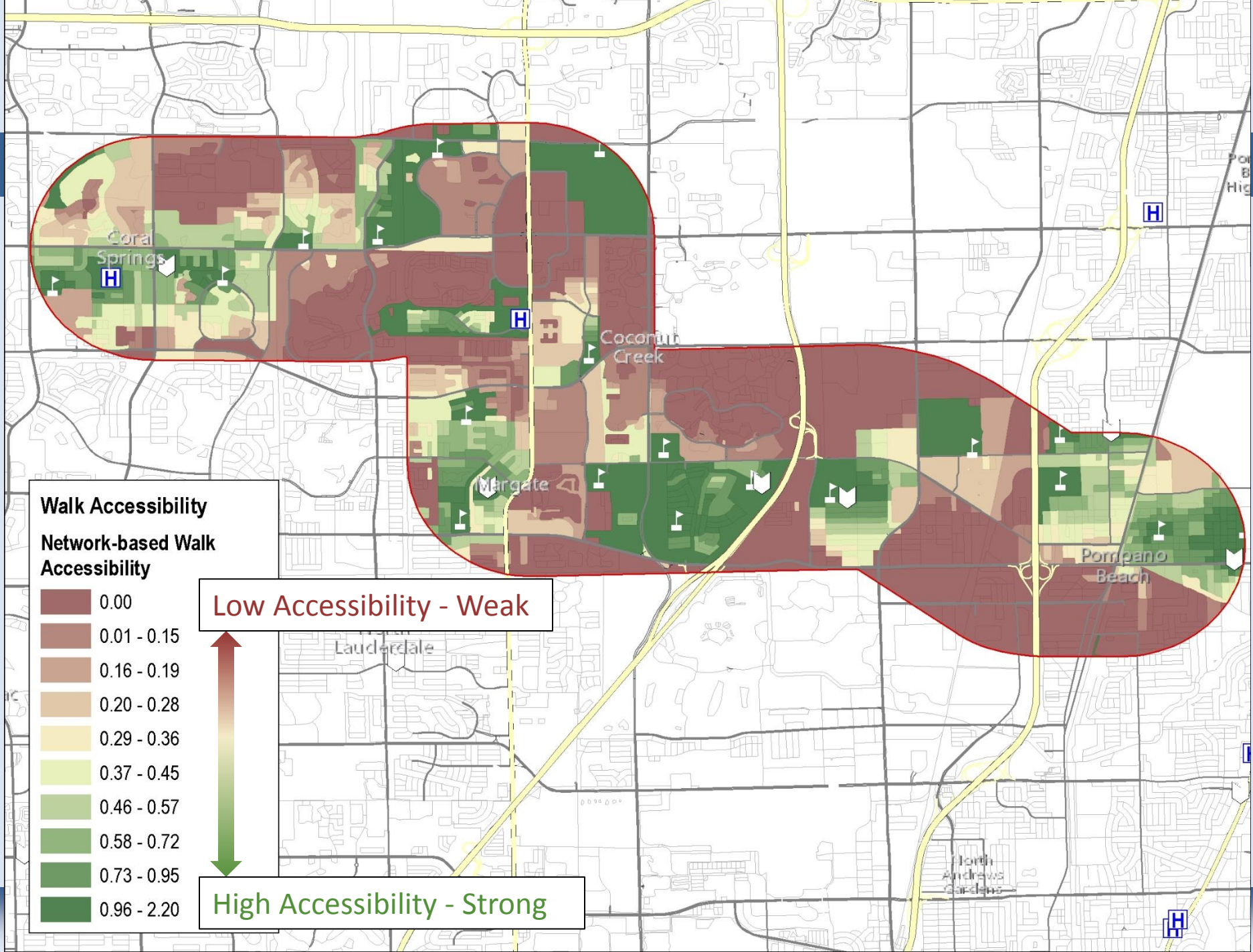
The Role of Distance Decay



- With distance decay, places that have closer access to opportunity are emphasized
- Distance decay **quantifies the role of proximity**

MEASURING ACCESSIBILITY





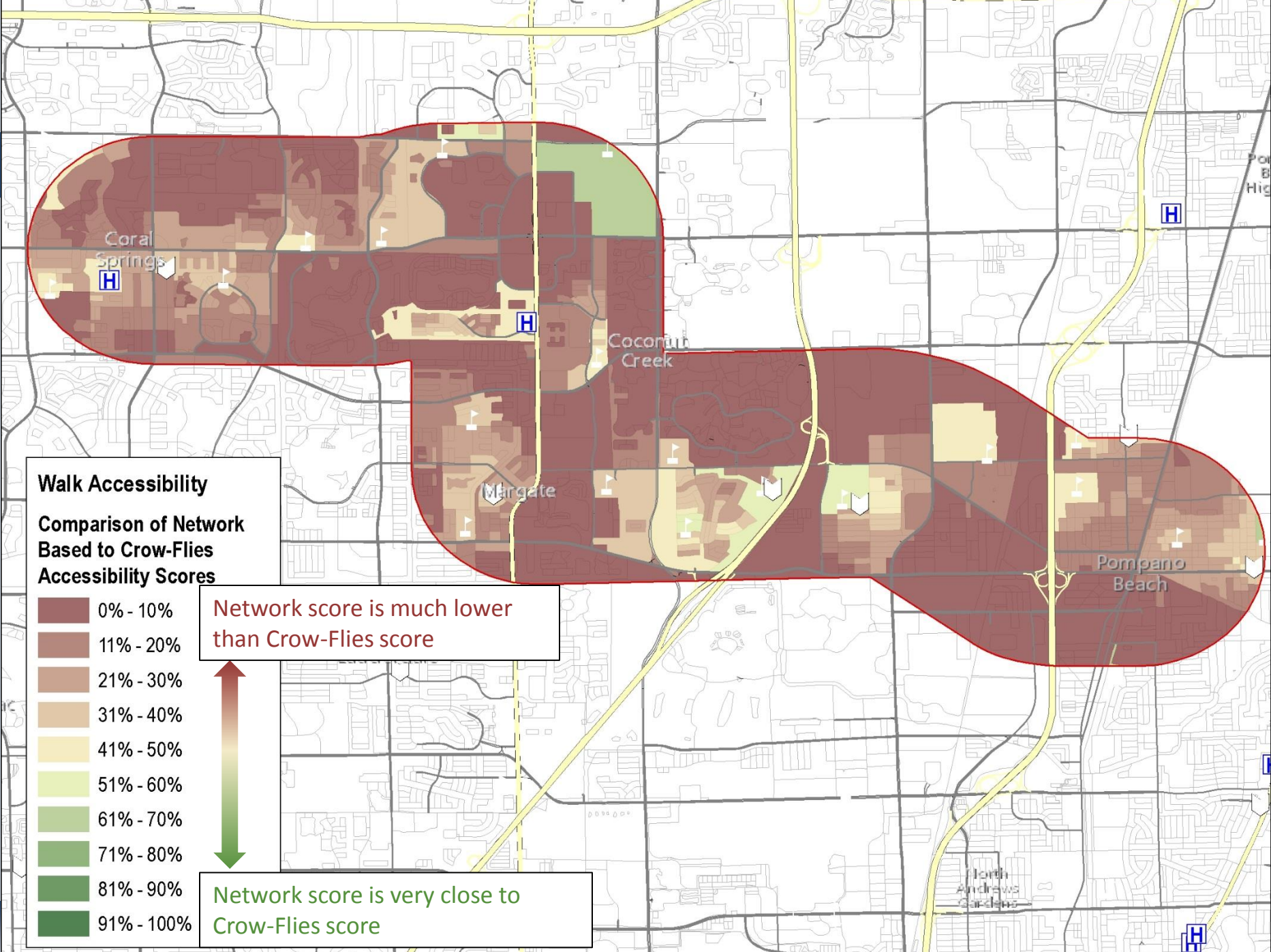
Walk Accessibility

Network-based Walk Accessibility

- 0.00
- 0.01 - 0.15
- 0.16 - 0.19
- 0.20 - 0.28
- 0.29 - 0.36
- 0.37 - 0.45
- 0.46 - 0.57
- 0.58 - 0.72
- 0.73 - 0.95
- 0.96 - 2.20

Low Accessibility - Weak

High Accessibility - Strong



Walk Accessibility

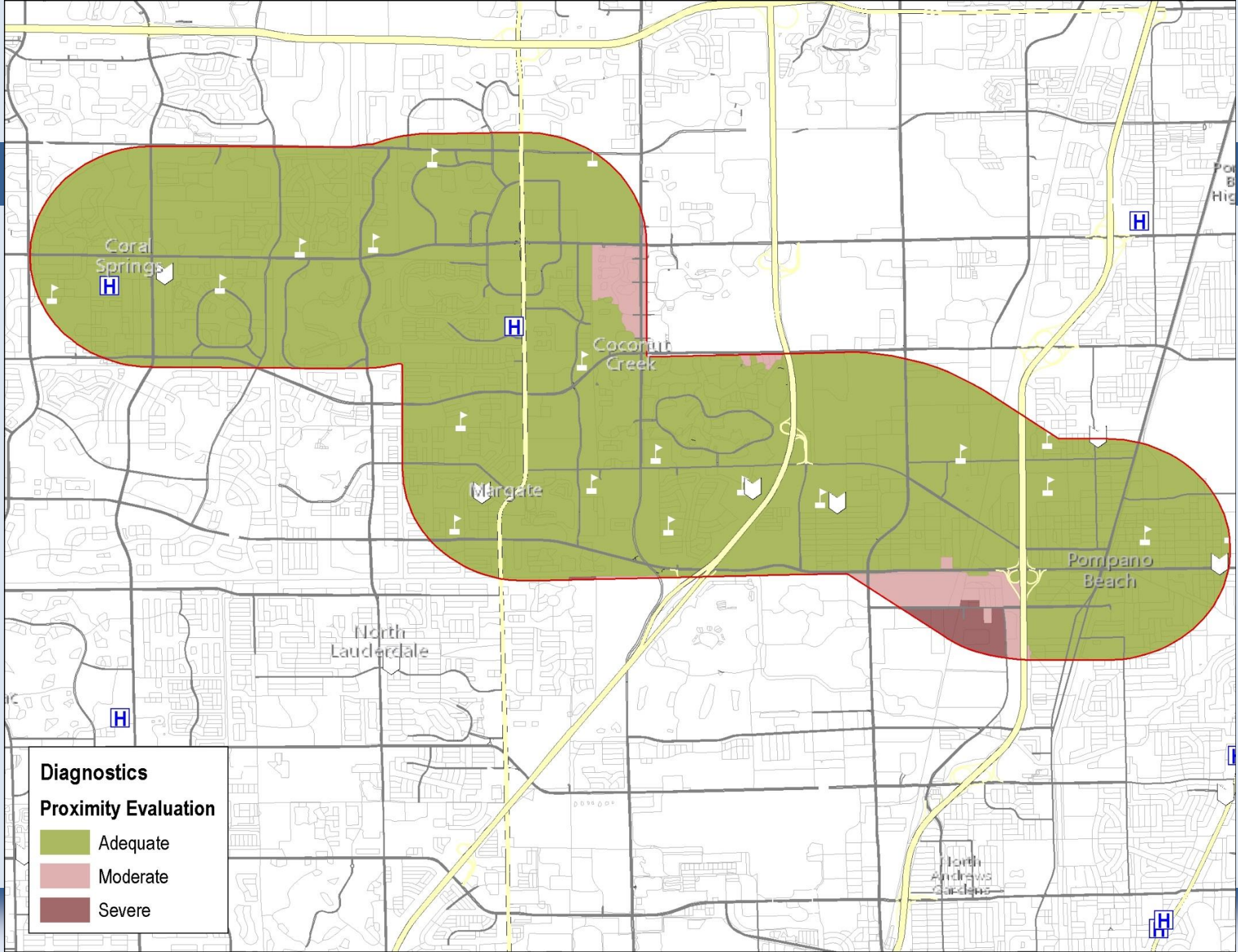
Comparison of Network Based to Crow-Flies Accessibility Scores

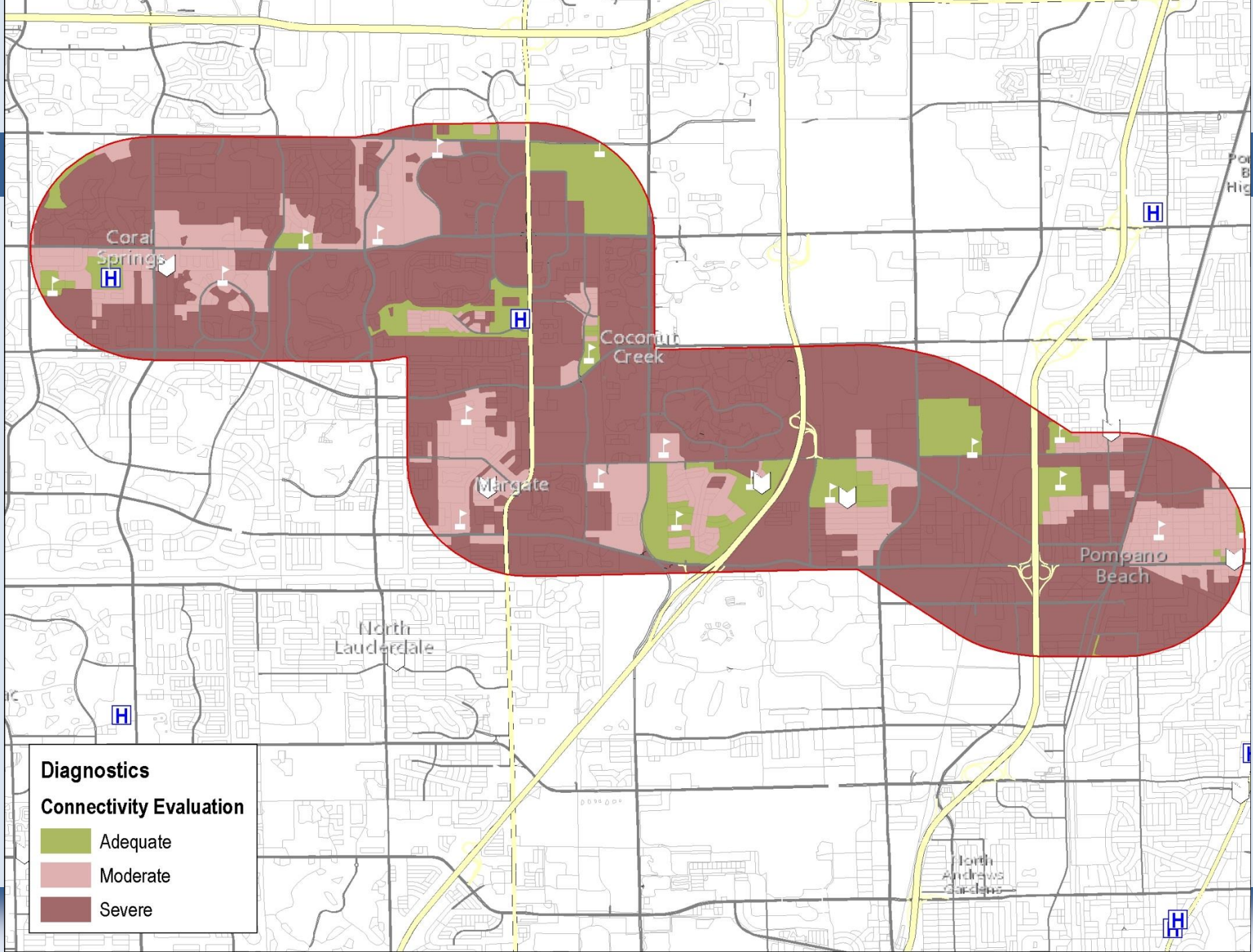
- 0% - 10%
- 11% - 20%
- 21% - 30%
- 31% - 40%
- 41% - 50%
- 51% - 60%
- 61% - 70%
- 71% - 80%
- 81% - 90%
- 91% - 100%

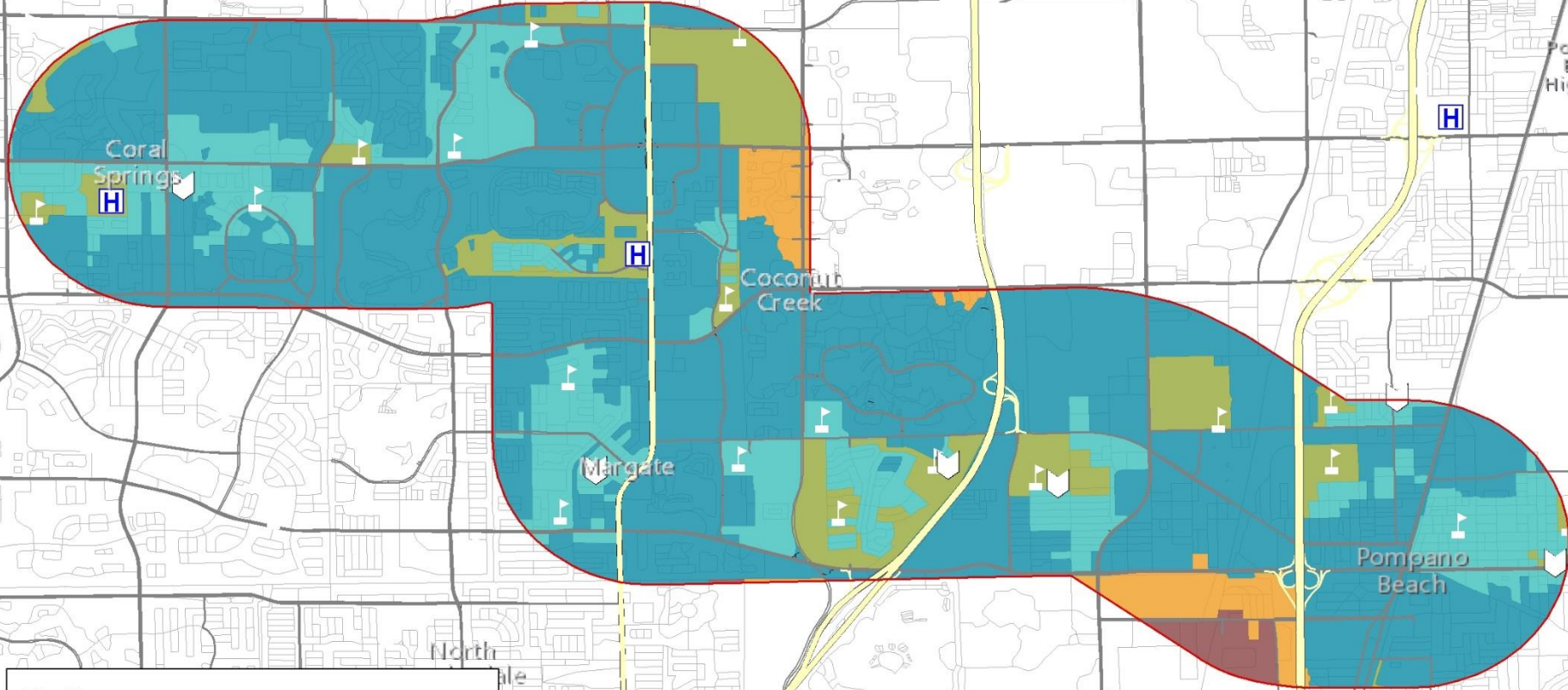
Network score is much lower than Crow-Flies score



Network score is very close to Crow-Flies score



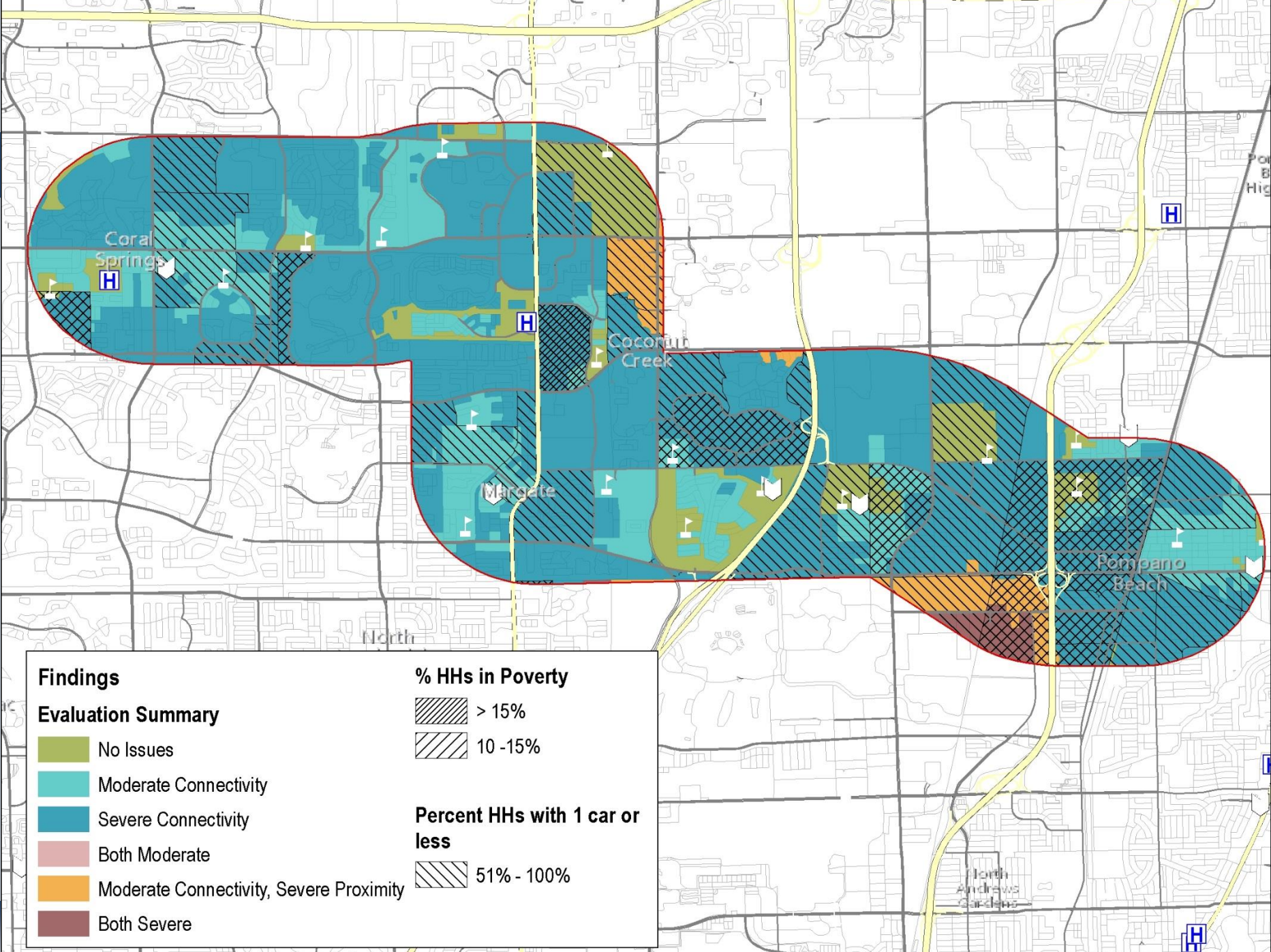




Findings

Evaluation Summary

- No Issues
- Moderate Connectivity
- Severe Connectivity
- Both Moderate
- Moderate Connectivity, Severe Proximity
- Both Severe



Findings

Evaluation Summary

- No Issues
- Moderate Connectivity
- Severe Connectivity
- Both Moderate
- Moderate Connectivity, Severe Proximity
- Both Severe

% HHs in Poverty

- > 15%
- 10 -15%

Percent HHs with 1 car or less

- 51% - 100%



Land Use Accessibility Analysis

Next Steps

- Analyze transit accessibility
 - Existing service
 - With proposed new service
- Examine land development regulations and zoning codes
- Develop recommendations for ‘cool spots’
 - Increase density and diversity of opportunities
 - Require greater connectivity standards



broward **MPO**
metropolitan planning organization



Comments on Tech Memos 2 and 3



Next Steps

- Public Outreach Meeting(s)
 - Wednesday September 30, 2015 – 6pm to 7pm
 - Larkins Community Center, Pompano Beach
 - 2nd location and date TBD
- Complete Tech Memo 4 and Tech Memo 5
- Next project management team meeting – September 24