

Mobility Hub  
at SW/SE

17<sup>TH</sup> ST

Project Development



# Agenda

- Since we last met.....
- Next Steps
- Overview of 2 Alternatives
- Additional Improvements
- Improvements for Residential Area (SW 9 Av to SW 4 Av)

## Meeting Goals:

- ✓ Discuss Current Status
- ✓ Discuss January 11<sup>th</sup> Community Meeting
- ✓ Hear Feedback on the alternatives



# ← Since we last met.....

## September

### Project Kick-Off

- Meeting: City SWG #1
  - Data Collection
  - Field Audits
- Meeting: Broward County ✓

## October

### Stakeholder Engagement

- Meeting: Commissioner Sturman ✓
- Meeting: HOA Boards ✓
  - 5-Year Crash Trends

## November

### Preliminary Alternatives

- Meeting: City SWG #2 ✓
- Meeting: FDOT #1 ✓
- Meeting: Broward County #2 ✓

## December

### Preliminary Alternatives

- Meeting: City Elected Official (District Commissioner)
  - Report #1

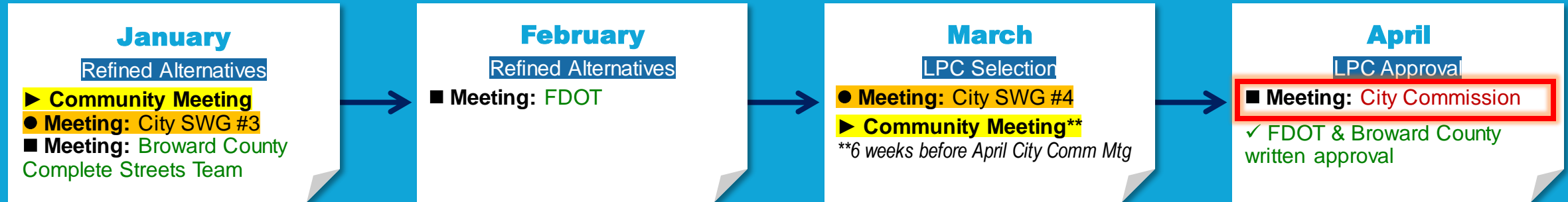
## Accomplishments to date:

- ✓ 2 meetings with City Staff Working Group
- ✓ 2 meetings with Broward County Staff
- ✓ 1 meeting with FDOT Staff
- ✓ 2 meetings with Stakeholders: Broward Health & Barron Development
- ✓ Developed 2 Preliminary Alternatives
- ✓ Refined the 2 Preliminary Alternatives
- ✓ Reviewed BCR Plans / Attended BCP Public Meeting
- ✓ Scheduled Community Meeting (January 11<sup>th</sup>)
- ✓ Scheduled presentation to Broward County Complete Streets Team (January 17<sup>th</sup>)



# 17<sup>TH</sup> ST

# Next Steps



## January Community Meeting Logistics:

- January 11, 2024
- Meeting Location?
- Meeting to begin at 6:00 p.m.
- Brief Presentation
- 4 Stations: (1) SW 9 Av to SW 4 Av; (2) SW 4 Av to FEC; (3) FEC to SE 3 Av; & (4) SE 3 Av to US1
- Residents can provide comments at meeting
- Residents will Vote for preferred Alternative using SurveyMonkey
  - One week deadline for voting
  - Information about the Alternatives will also be available on MPO webpage



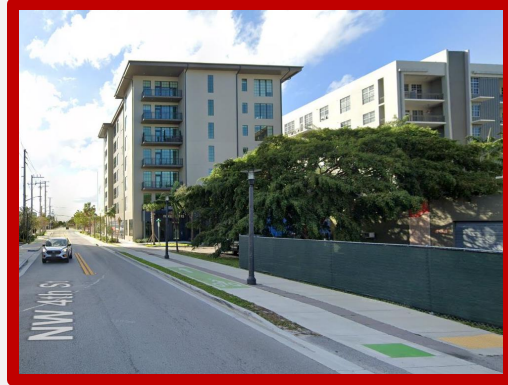
# 17<sup>TH</sup> ST

# 17<sup>th</sup> Street: 2 Alternatives

## Alternative 1:

### Raised Bike Lane on both sides of roadway

- More conventional bike facility design
- Fewer disruptions with Trees & Utilities
- Lower cost (compared to Alt. 2)



## Alternative 2:

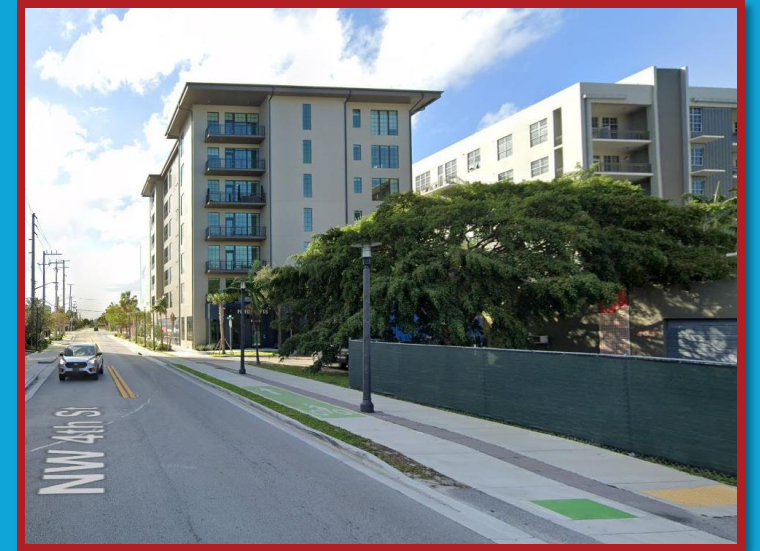
### Raised 2-way Cycle Track on south side of roadway

- Dedicated Pedestrian / Bike space on one side of roadway
- Direct access for all bicyclists to Croissant Park and Elementary School



# SW 4 Ave to US-1 **Alternative 1**

Raised bike lane on both sides of roadway

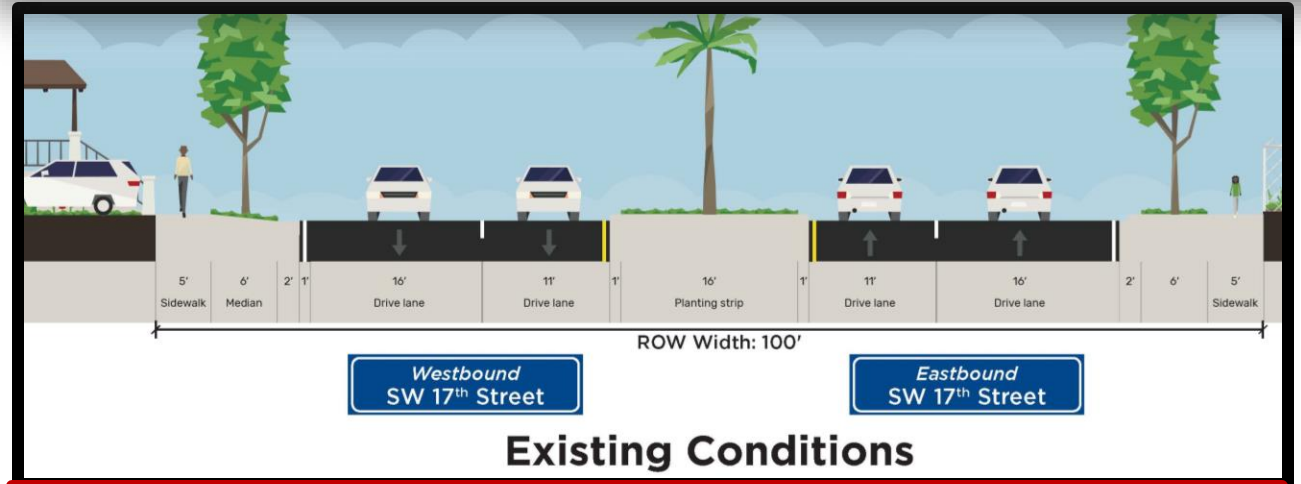
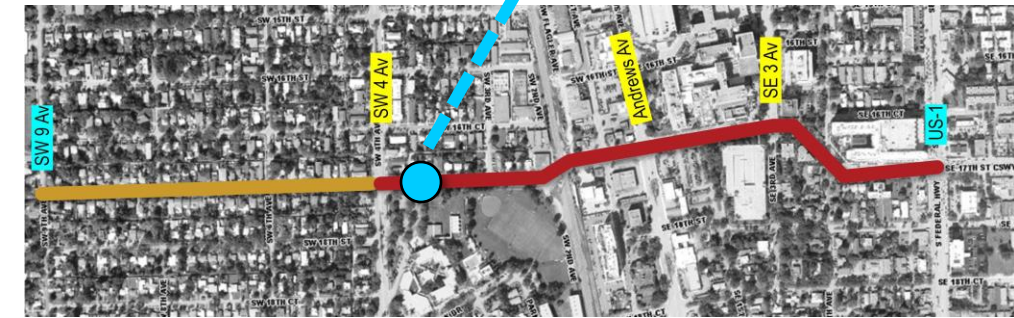


# 17<sup>TH</sup> ST

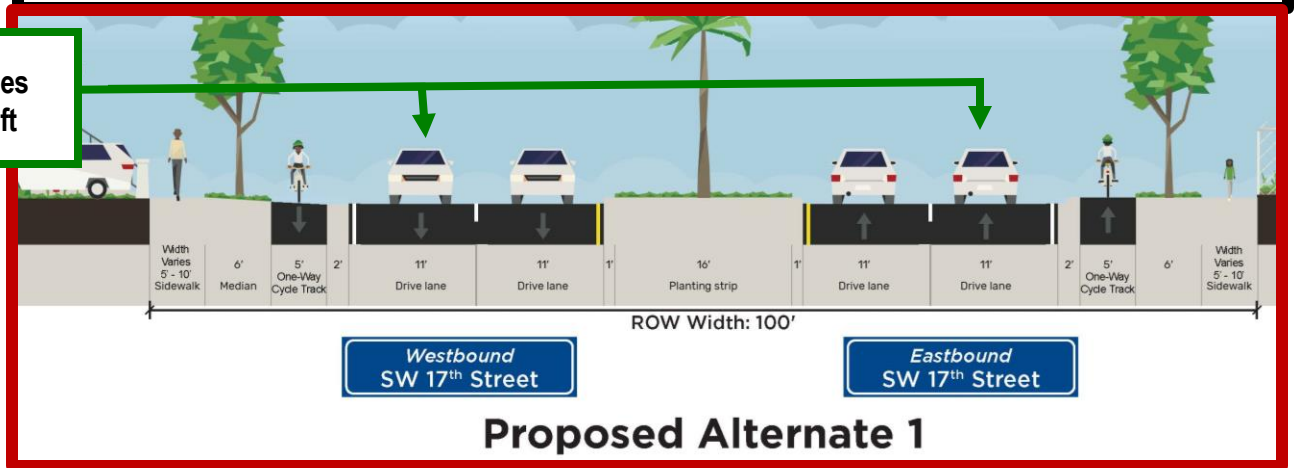


# Alternative 1

East of SW 4 Av

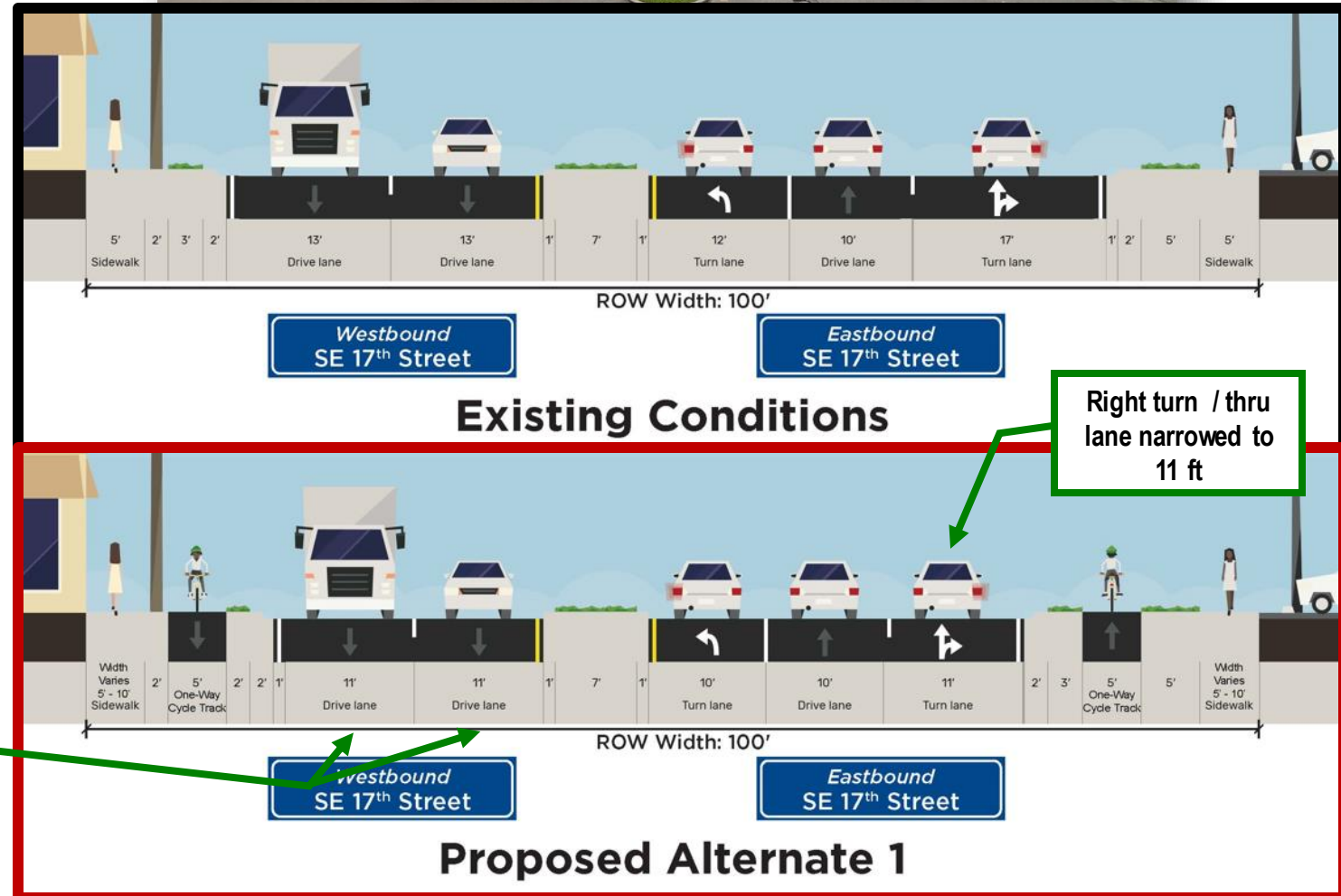
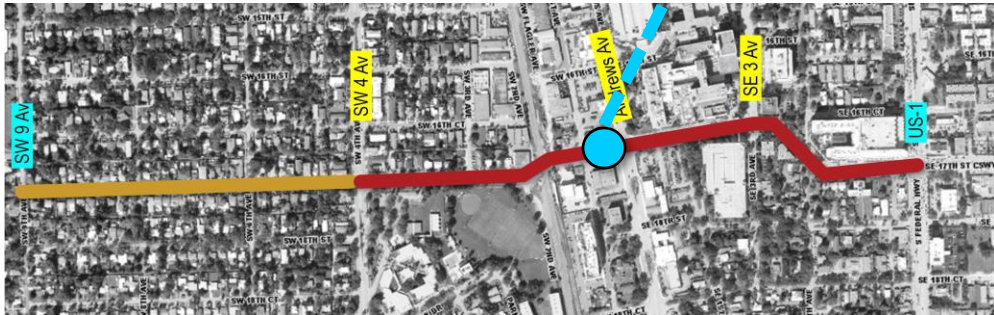


Both outside lanes narrowed to 11 ft



# Alternative 1

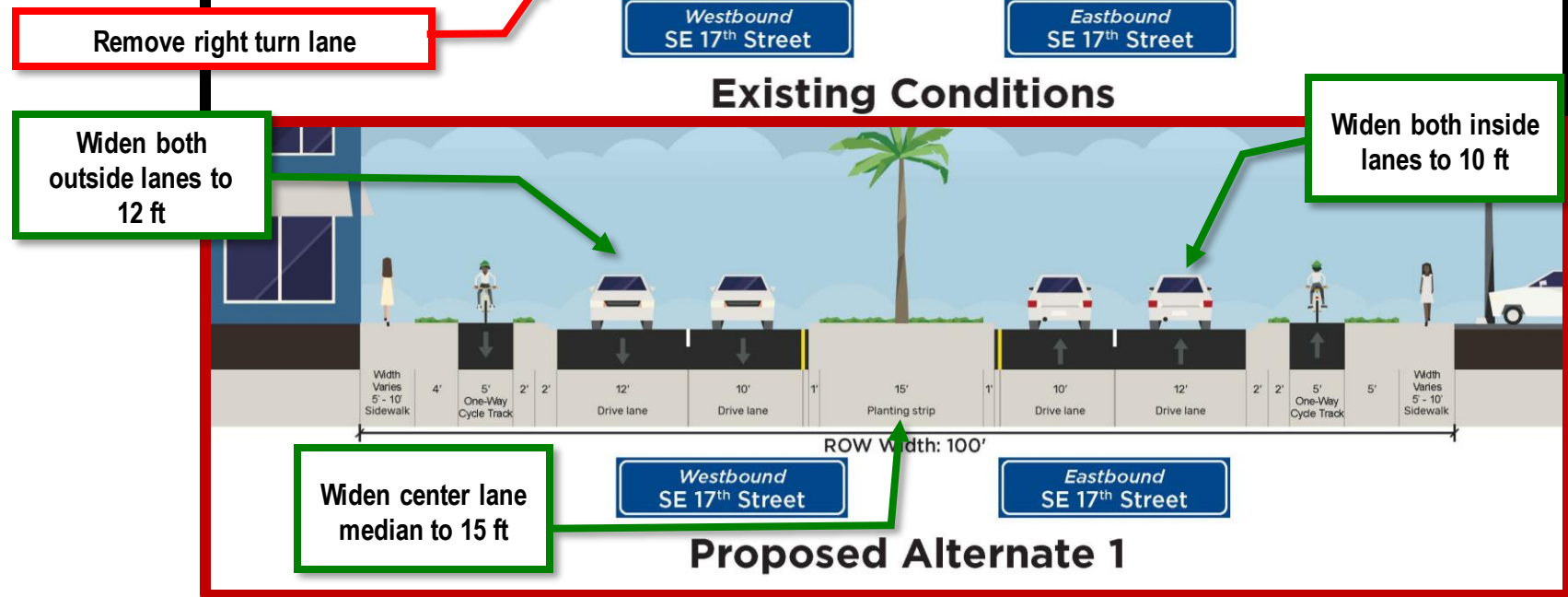
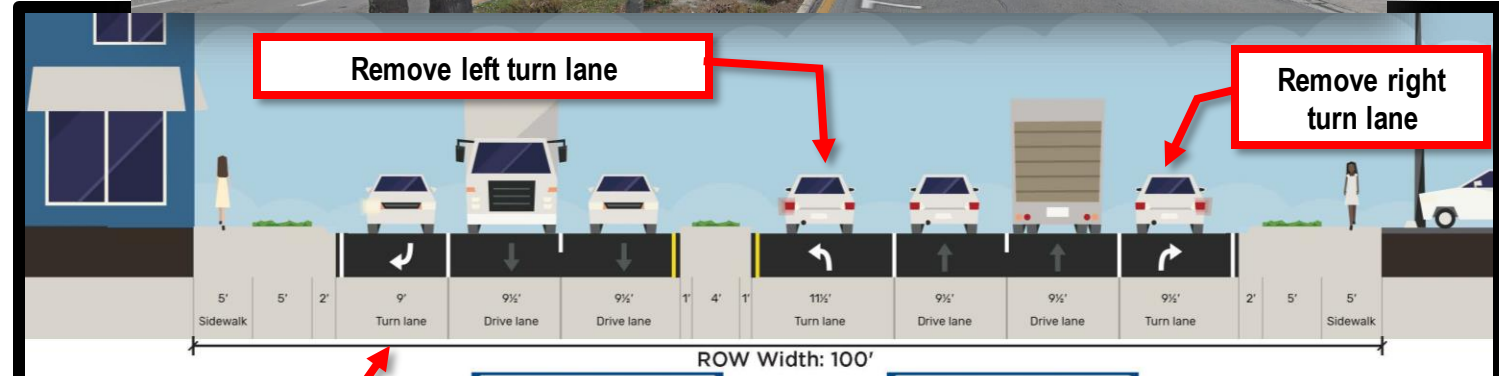
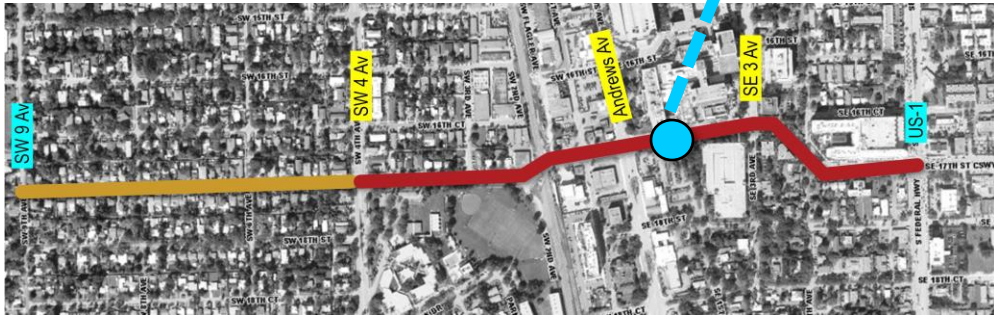
## West side of Andrews Av





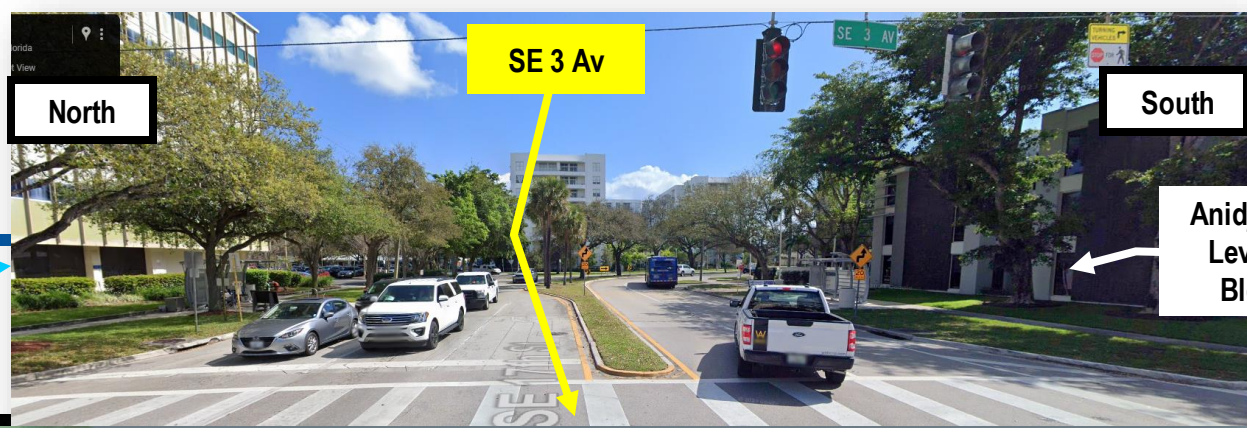
# Alternative 1

West side of SE 1 Av



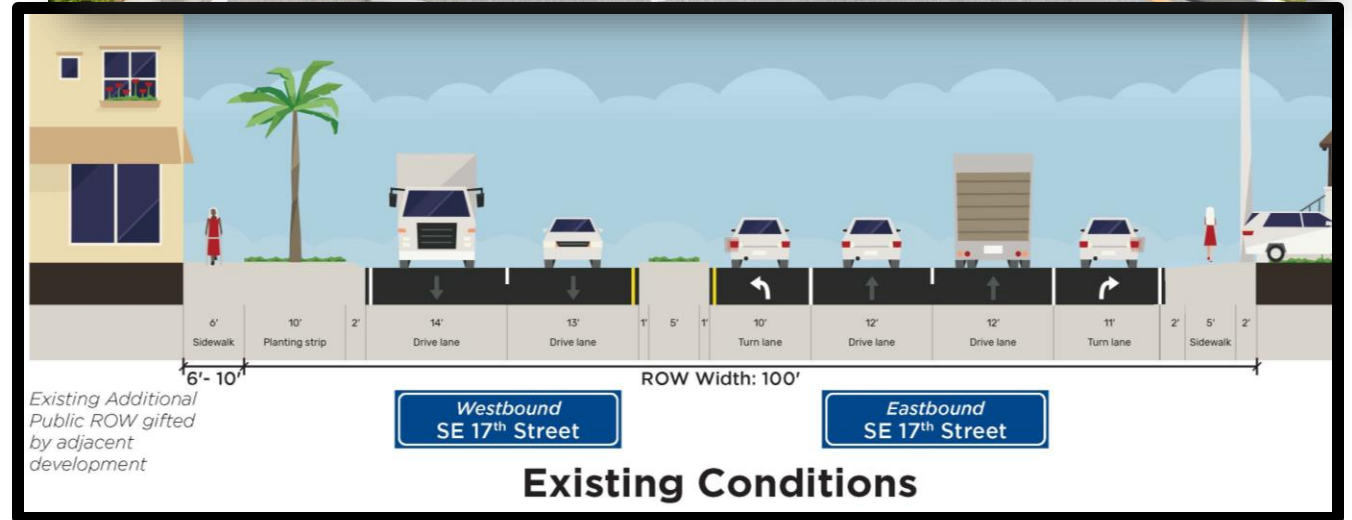
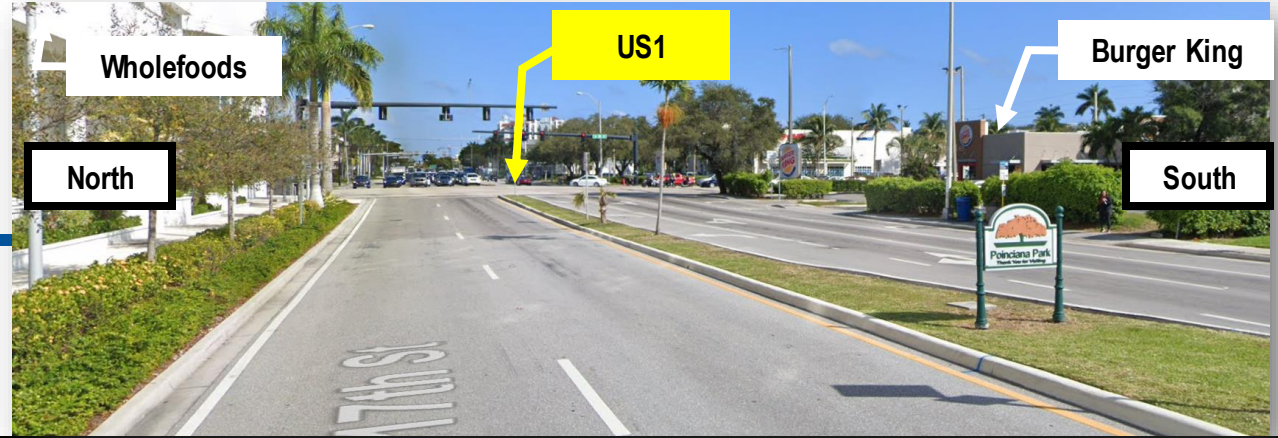
# Alternative 1

## East side of SE 3 Av



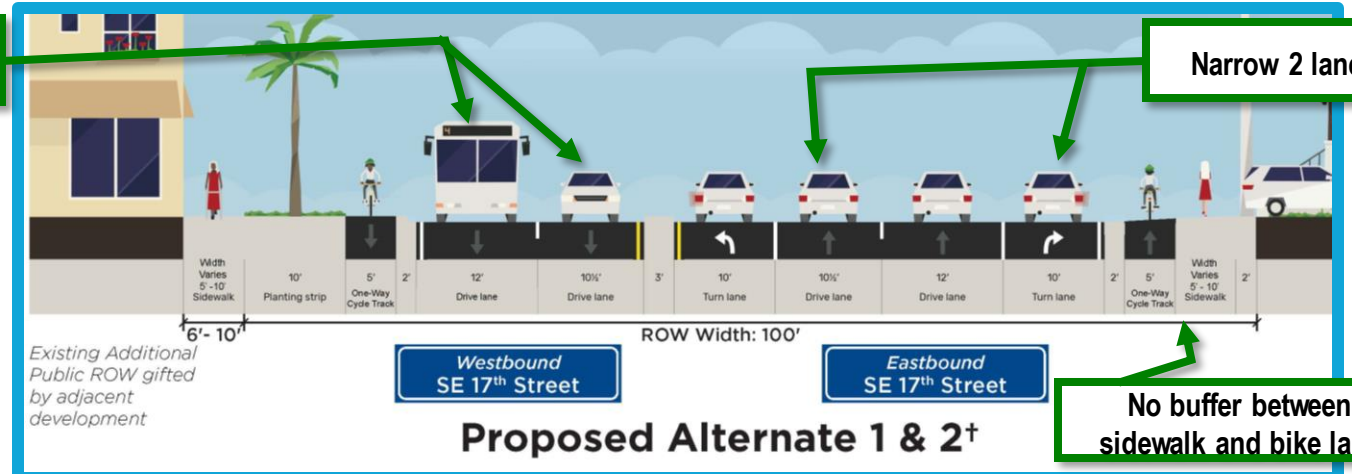
# Alternative 1 & 2

East of SE 4 Av  
 - both Alternatives have same configuration



Narrow both lanes

Narrow 2 lanes



# SW 4 Ave to US-1 Alternative 2

2-way Cycle Track on south side of roadway

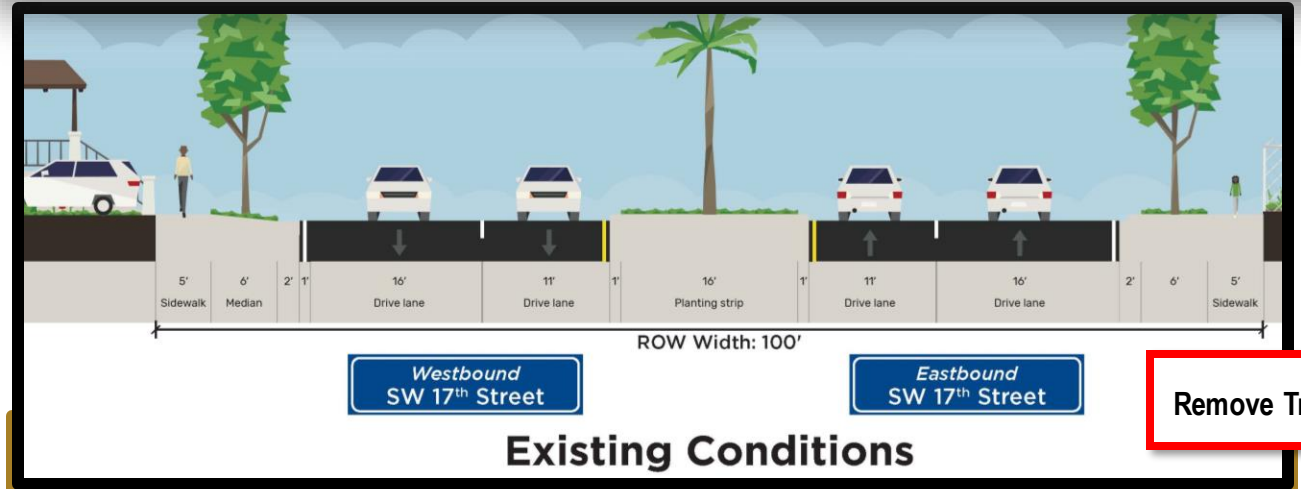
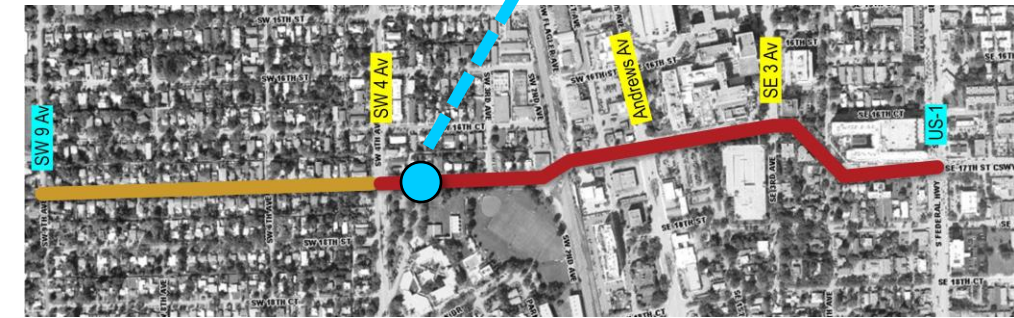


# 17<sup>TH</sup> ST



# Alternative 2

East of SW 4 Av



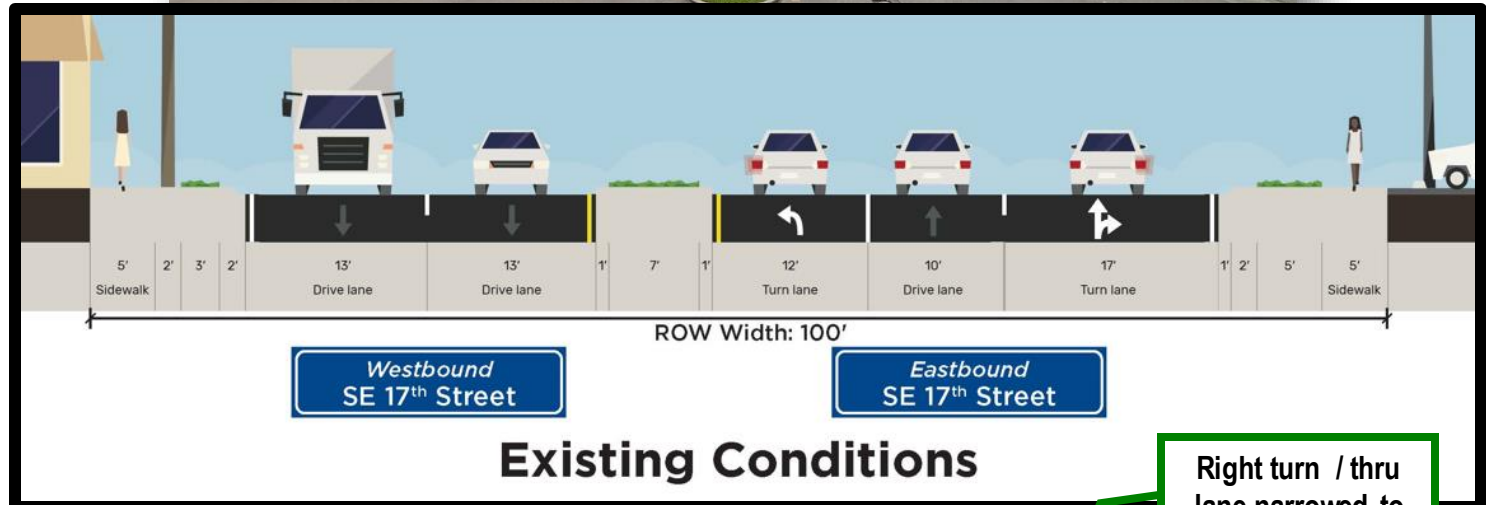
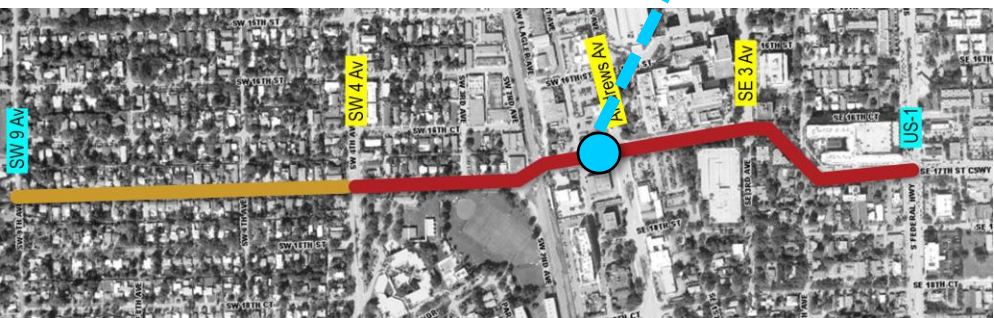
Both outside lanes narrowed to 11 ft

New 6 ft wide marked shoulder



# Alternative 2

## West side of Andrews Av



New 5 ft wide marked shoulder

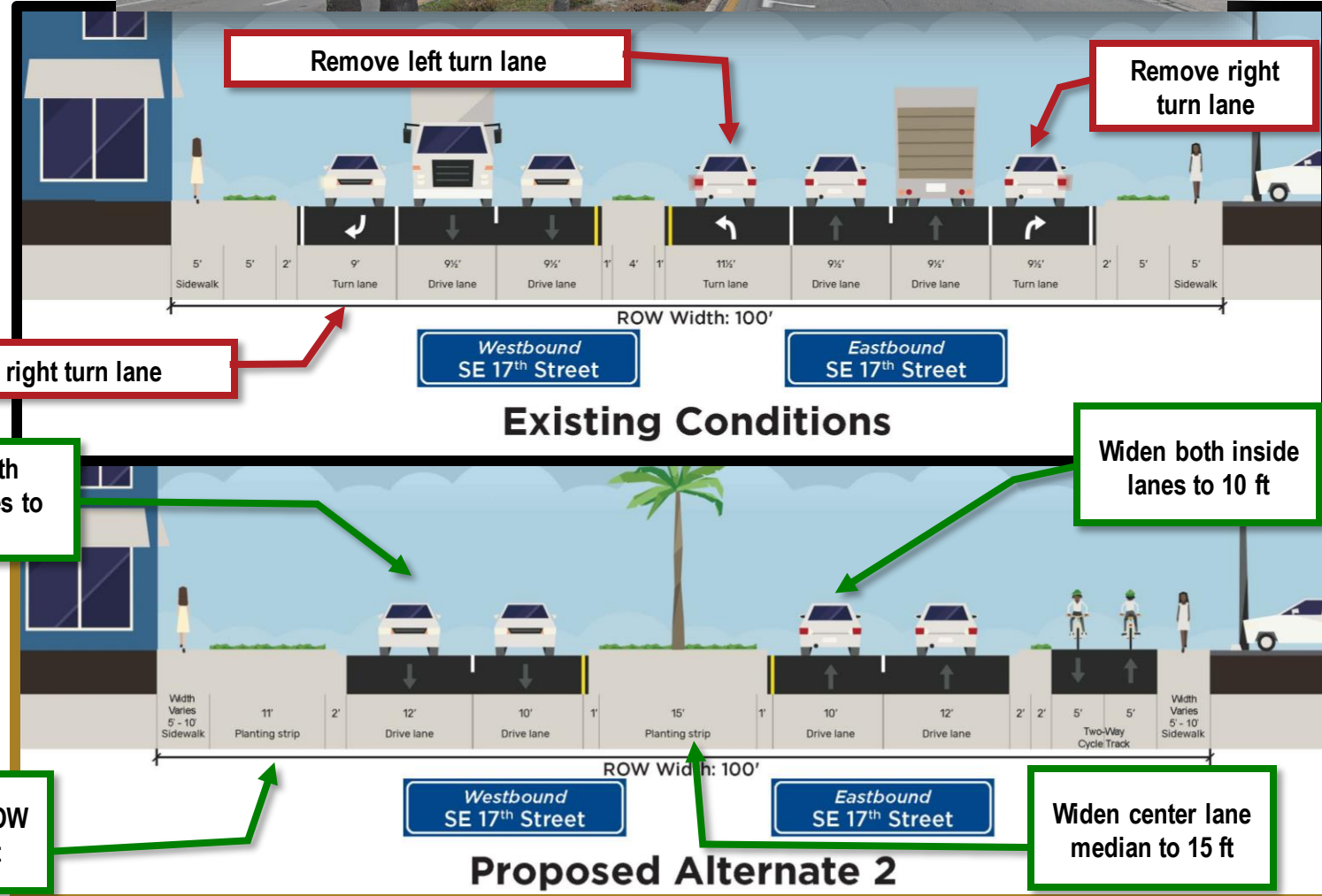
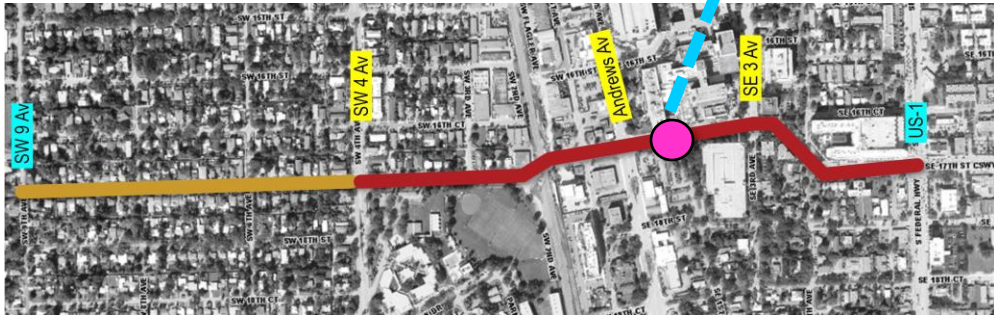
Both WB lanes narrowed to 11 ft

Right turn / thru lane narrowed to 11 ft



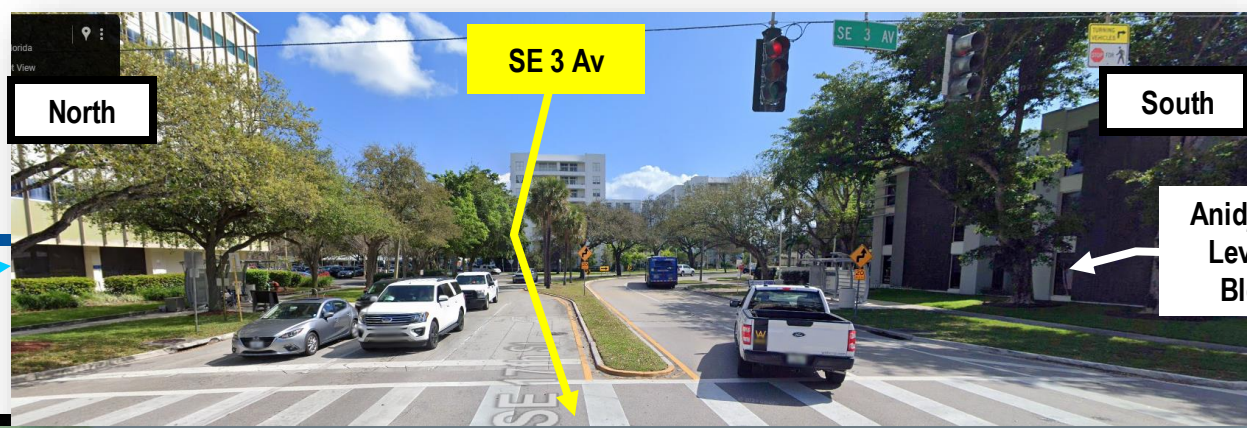
# Alternative 2

## West side of SE 1 Av



# Alternative 2

## East side of SE 3 Av



Outside lane converted to right turn and thru

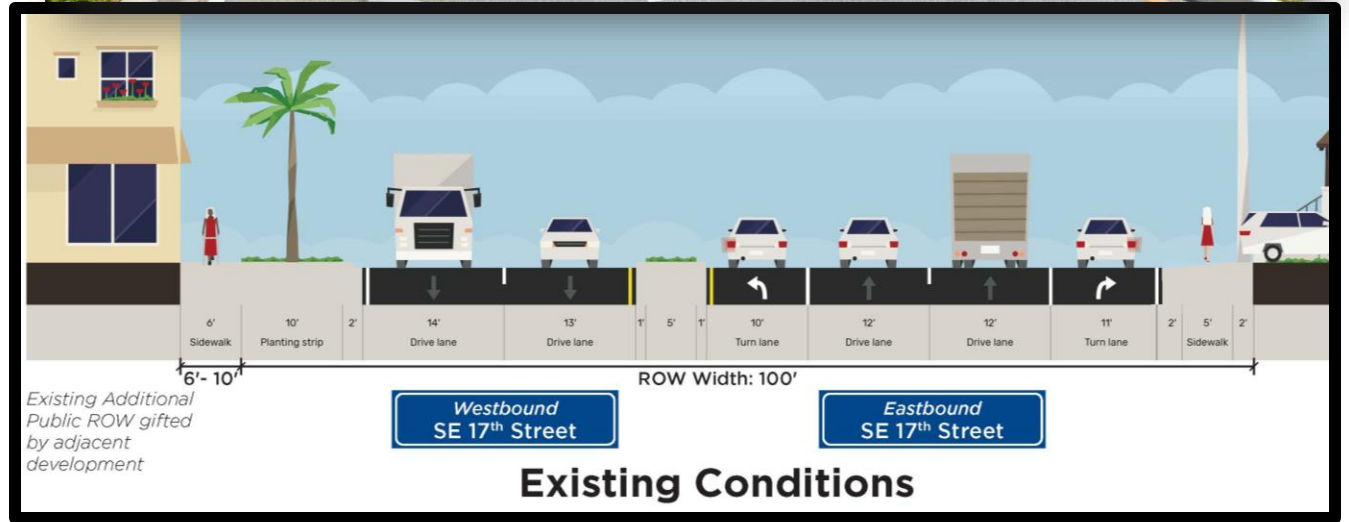
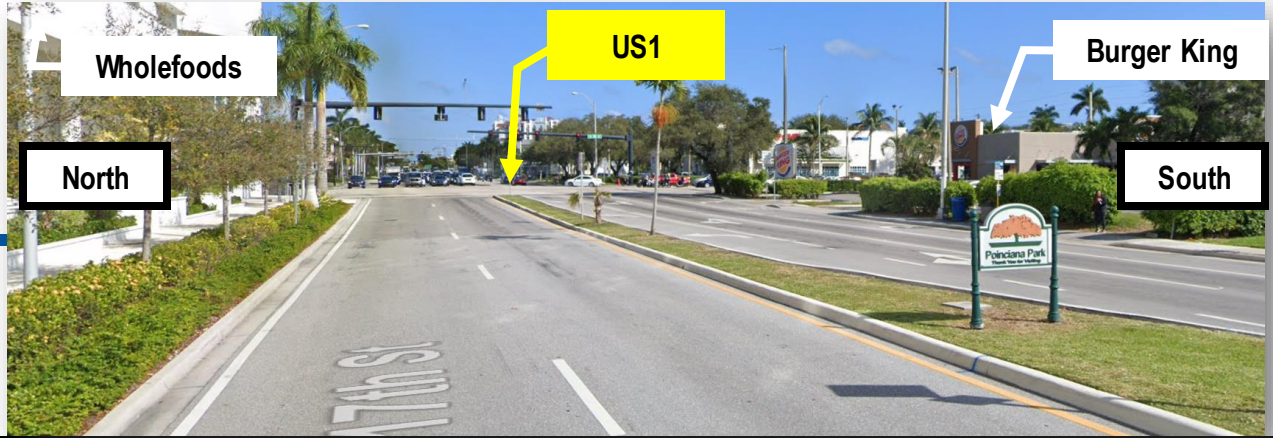
Sidewalk moved behind transit shelter





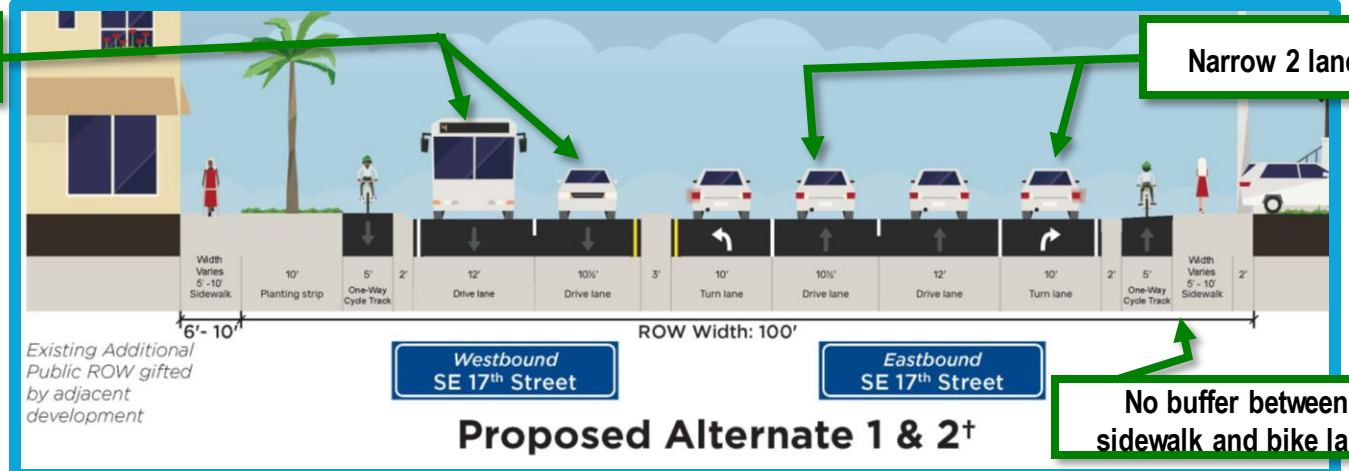
# Alternative 1 & 2

East of SE 4 Av  
 - both Alternatives have same configuration



Narrow both lanes

Narrow 2 lanes



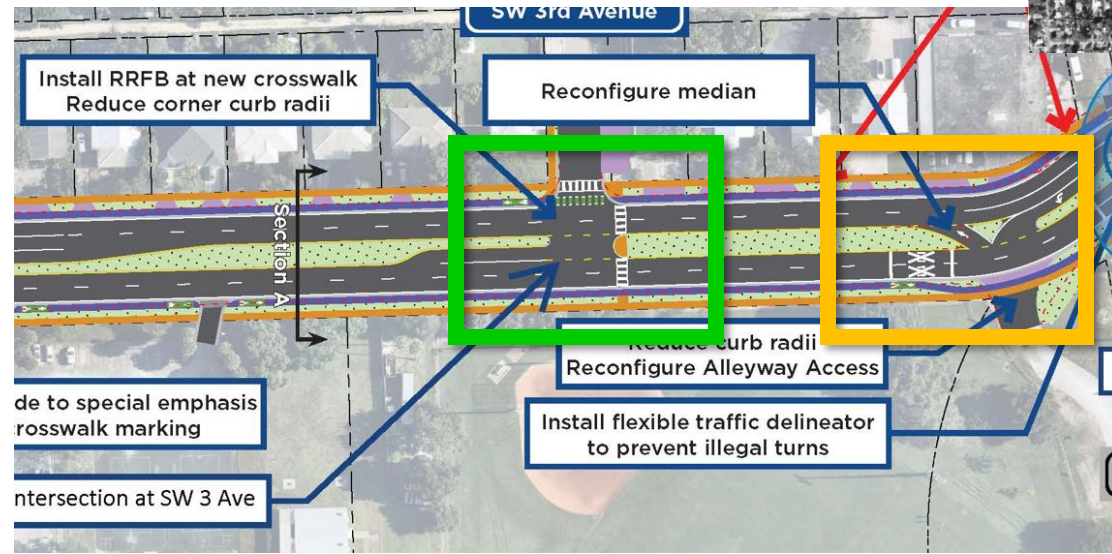
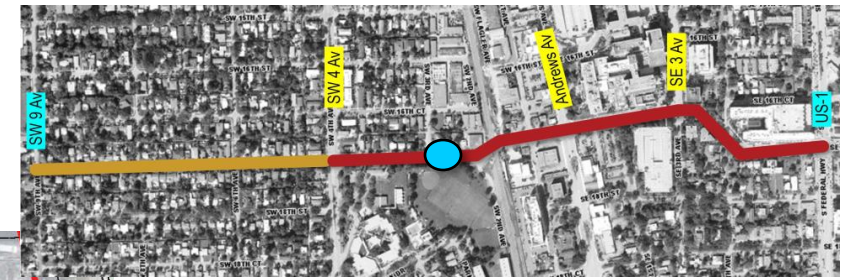
# Additional Improvements



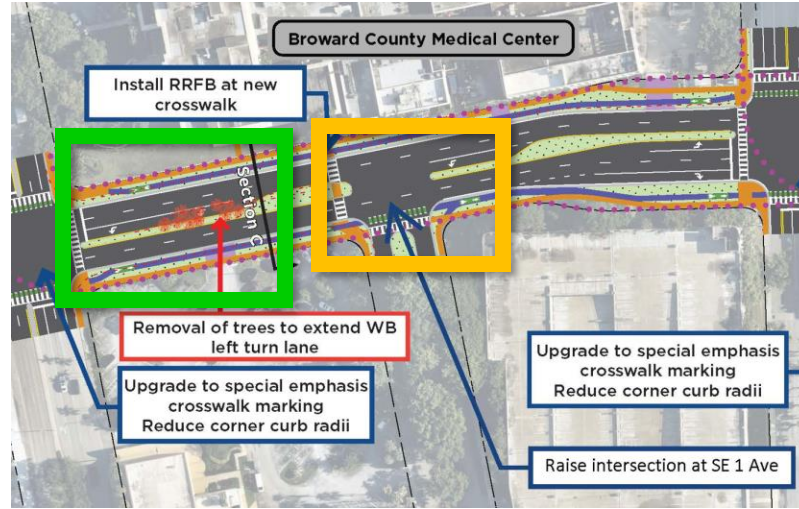
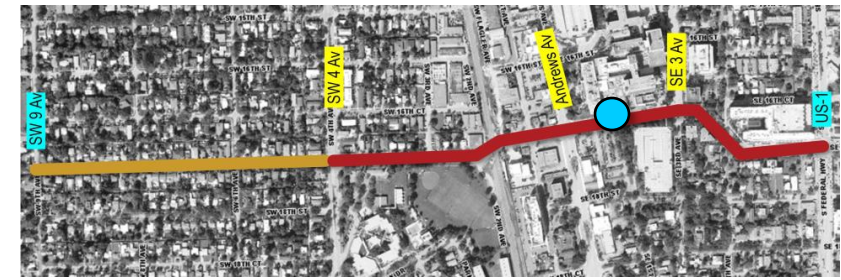
# 17<sup>TH</sup> ST



# Alternative 1 & 2: Other Improvements



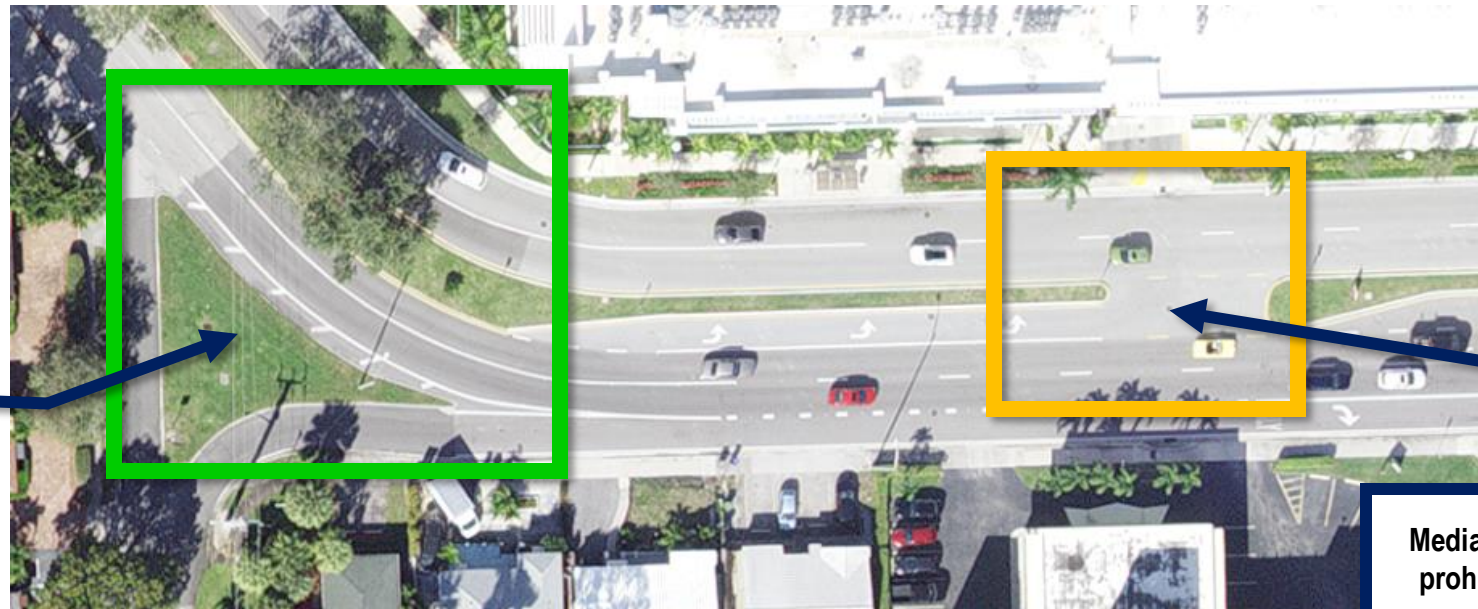
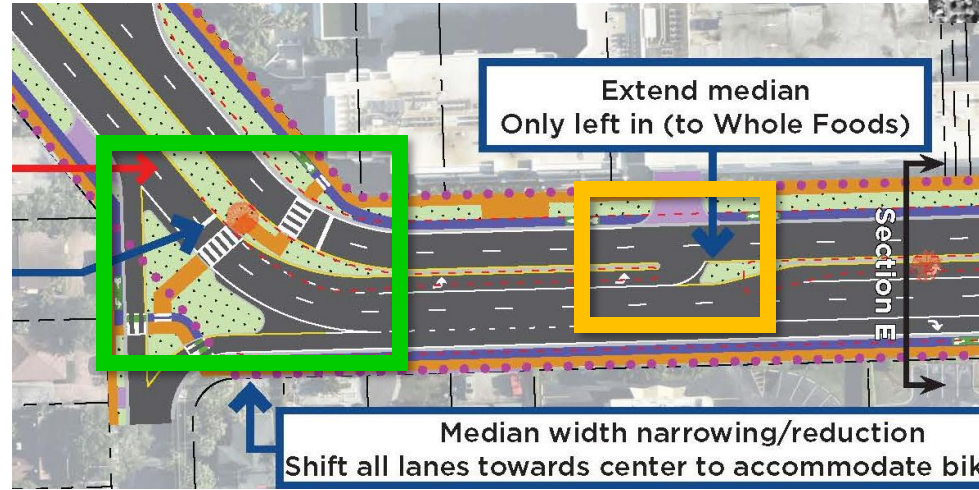
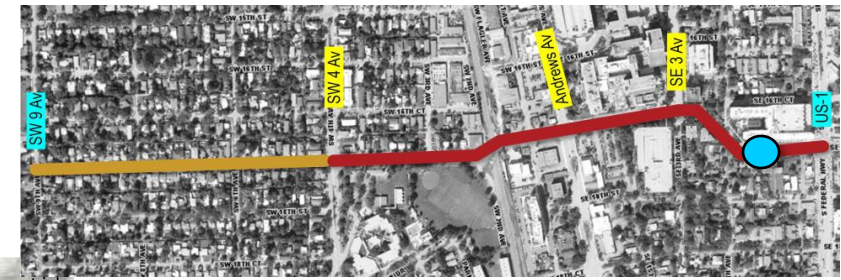
# Alternative 1 & 2: Other Improvements



Median reconfigured to create more space for cars waiting to make SB Left turns

Median opening to be redesigned to prohibit U-Turns

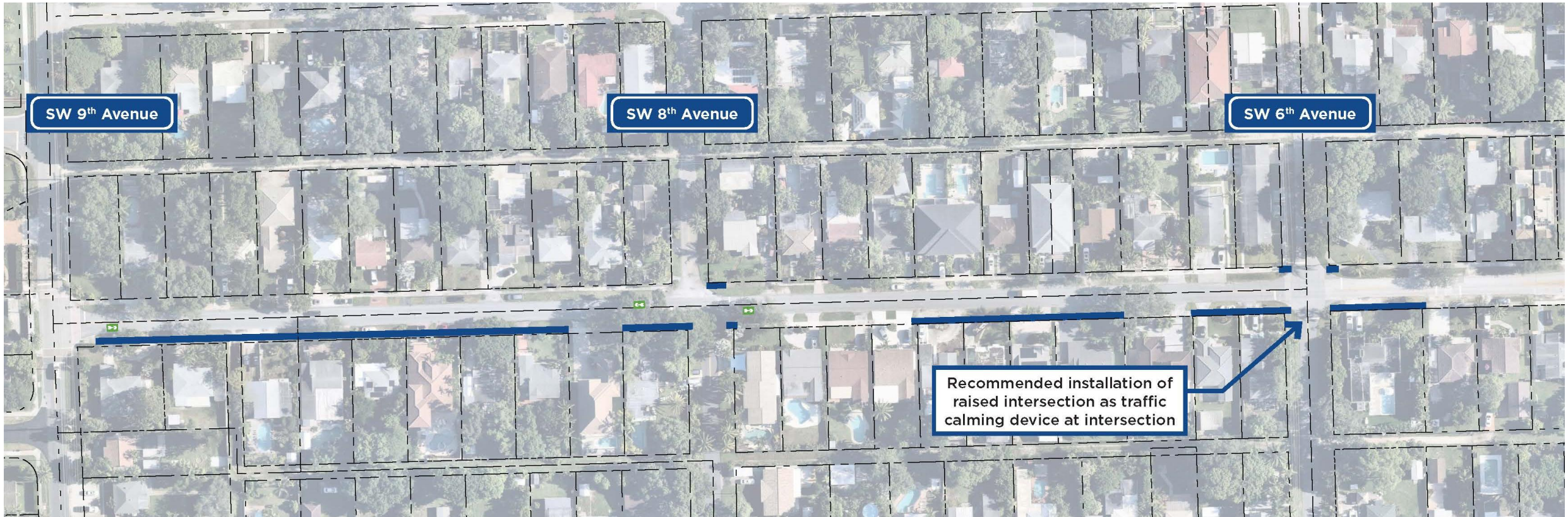
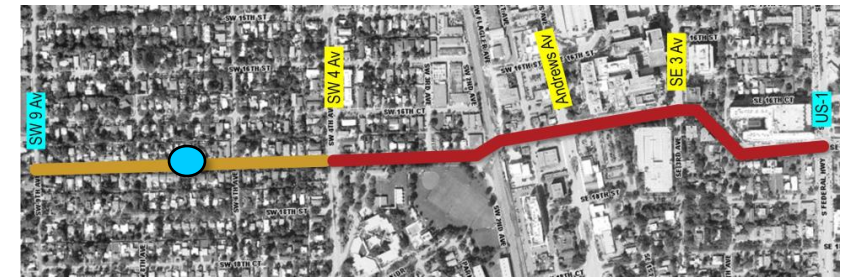
# Alternative 1 & 2: Other Improvements



New Raised Pedestrian Crossing to connect via pork chop

Median opening to be redesigned to prohibit left turns from WF Garage

# SW 9 Av to SW 4 Av



- - - - : Property/ROW line
- - - - : Location of existing pavement
- 3->> : Sharrows
- █ : Fill in Sidewalk Gaps



PARKING

FRESH FOODS MARKET



# After this meeting....

---

- Email meeting presentation
- Email full Plan View sets
  - Shows in detail crossings and other improvements
- Email full Street View sets
- Prepare the Community Meeting Flyer
- Promote Community Meeting
- Prepare for Community Meeting
- Answer any questions.....





# Mobility Hub at SW/SE

# 17<sup>TH</sup> ST

Project Development

