



Update on Palm Beach MPO Funded Projects

*Presented February 3, 2016: Palm Beach
Technical Advisory Committee (TAC)
Citizens Advisory Committees (CAC)*



Tri-Rail Milestones

- Service began Jan 9, 1989
- Double-tracking completed in 2006
 - Allowed for reliable and more frequent service
- 4 million annual boardings for first time in 2008
- 77+ million passengers carried to date
- Modernization efforts and upgrades ongoing

Current Tri-Rail Service



- 72 mile system
- Now 18 stations
- 50 trains per weekday
 - Peak- 20 & 30 minutes
 - Off Peak- 60 minutes
- Hourly weekend service since March 2013
- Growing and changing ridership patterns

Current Tri-Rail Markets

- Inter-county travel
- Airports
- Suburban employment centers and office parks
- Colleges & universities
- Magnet schools
- Major downtowns
 - Via connecting transit
- Primarily choice riders
 - 1/3 transit dependent



Tri-Rail Ridership

Tri-Rail ridership increased 140% from 2005 to 2014
Strongest Growth in Palm Beach County

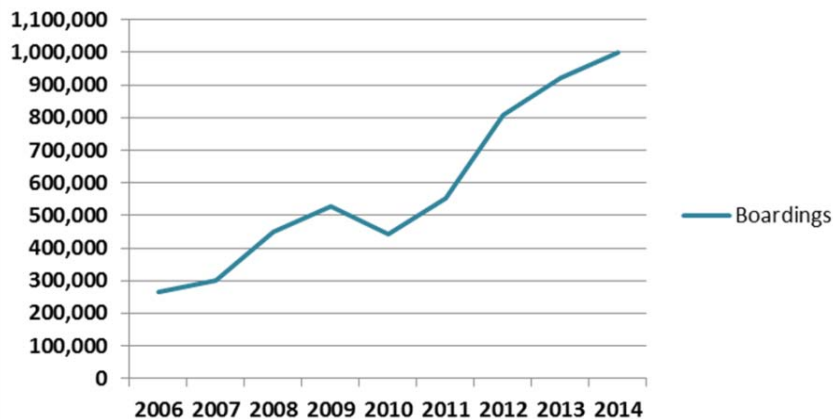


SFRTA Shuttle Bus Program



- 20 free routes linking Tri-Rail with major destinations
- Some new routes and partnerships established in recent years
- New & larger buses coming soon
- Increasing demand
 - Strong ridership growth
 - All routes exceed performance standards
 - More off-peak and 7-day service
 - Frequent requests for expanded service
- Budget constraints

SFRTA Shuttle Bus Boardings (FY)



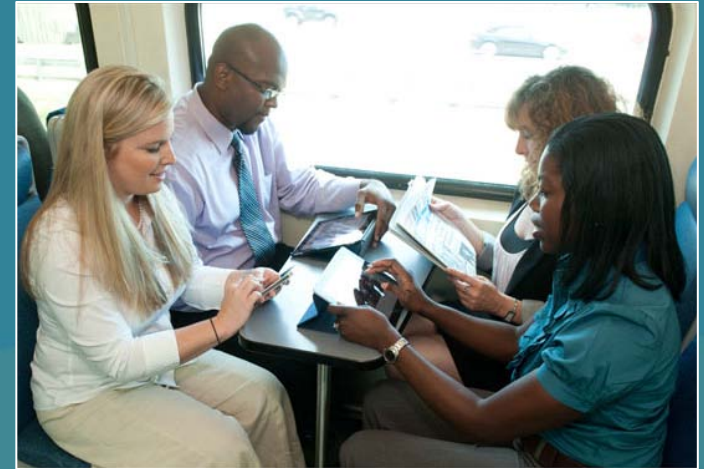
Bicycles Onboard

- Expanded bike capacity being pursued
 - 4th car added to busiest trains
 - Dedicated bike cars implemented
 - First dedicated bike car entered service July 2015



Additional New Technology

- Onboard Wi-Fi
 - Implemented in Fall 2015
- New Passenger Information System
 - Real-time information
 - Smartphone tracking app
 - Now being tested
 - Operational in summer 2016
 - Additional system elements ready in 2017



PALM BEACH MPO FUNDED PROJECTS

NORTHERN LAYOVER MAINTENANCE FACILITY

NEW BOCA RATON STATION

NEW TRI-RAIL PBIA STATION STUDY

**SFRTA/TRI-RAIL COASTAL LINK
WEST PALM BEACH TO JUPITER EXTENSION**

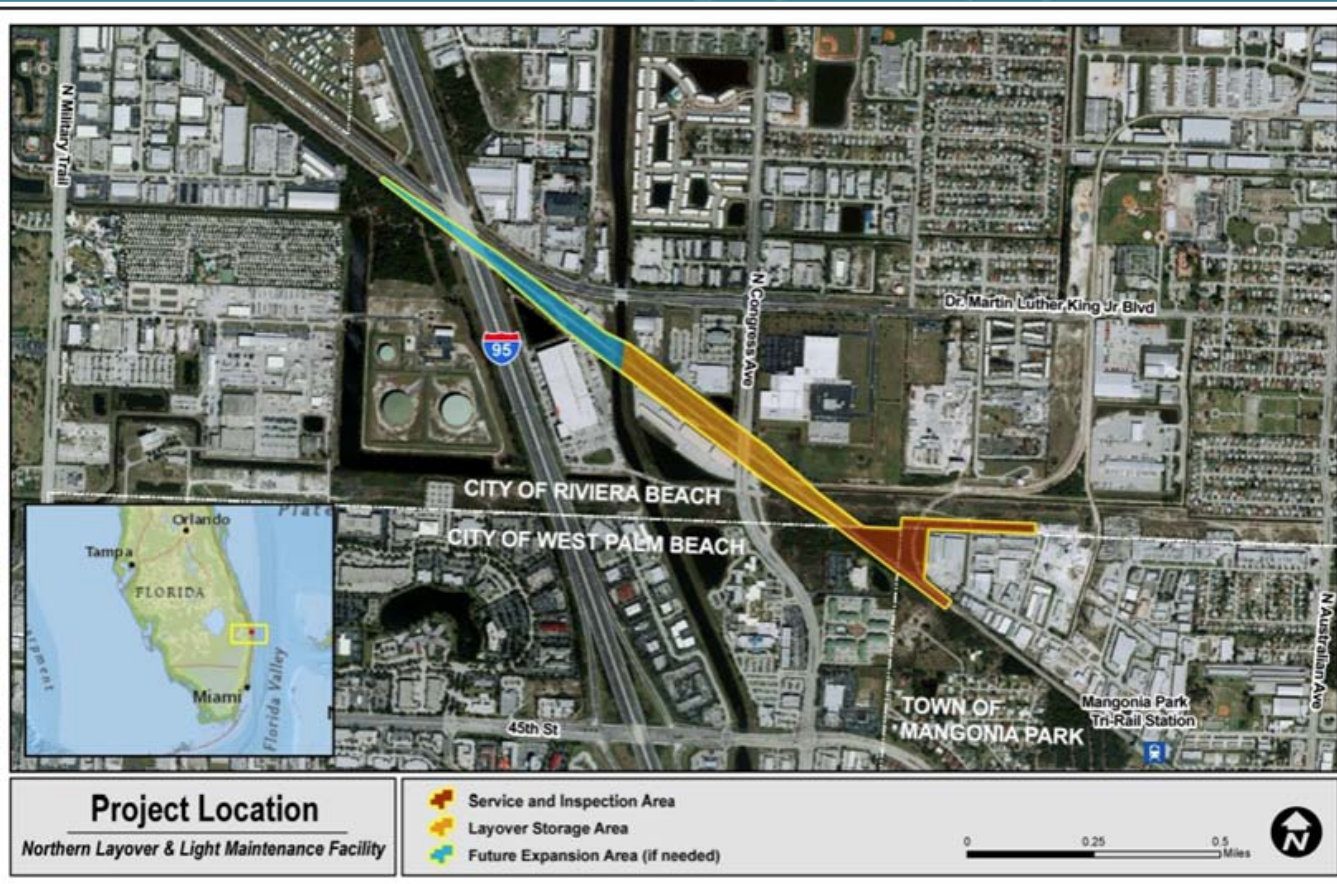


SFRTA Palm Beach County Projects

- **Included in:**
 - Palm Beach MPO 2040 LRTP Cost Feasible Plan
 - Palm Beach MPO TIP (FY 2016 – 20)
 - FDOT Work Program
 - SFRTA Transit Development Plan (TDP)

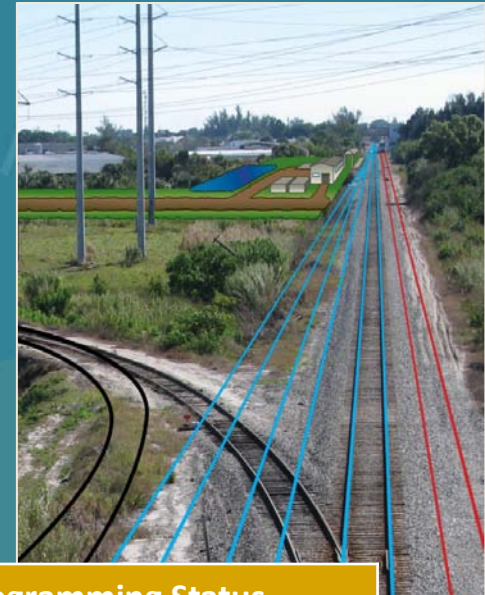
New Northern Layover Facility

Project Estimated Costs: \$36.15 m



New Northern Layover Facility

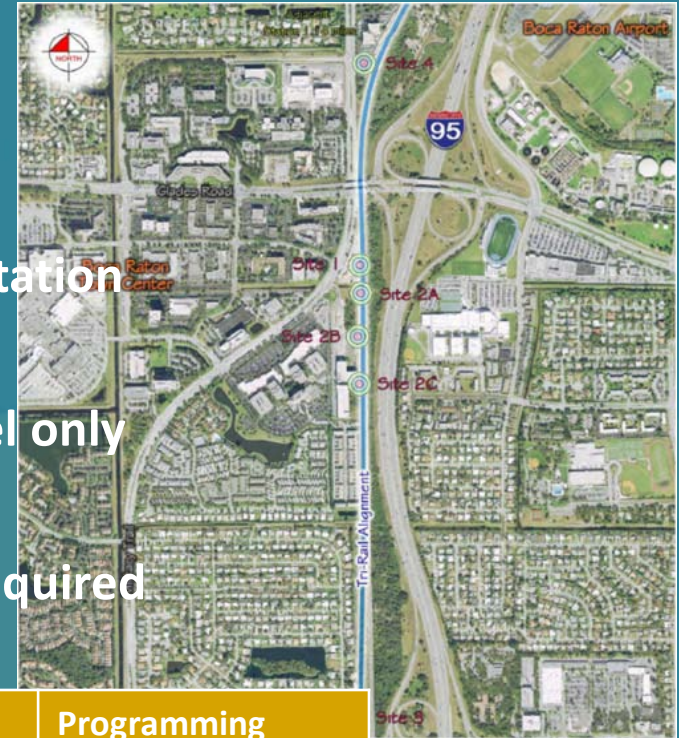
- Mission Spur, one half mile north of the Mangonia Park Station within the South Florida Rail Corridor
- More efficient end-of-line location
- Adds greatly needed train storage capacity
 - Existing Tri-Rail system
 - Facilitate Plans to expand system to Jupiter
- Federal environmental clearance received 2013
- Construction time estimated 24 months



Phase	Fiscal Year	Fund Type	Fund Amount	Programming Status
NEPA/Concept Design/RW	FY 2012	SU (MPO)	\$ 1,500,000	Programmed
DBF	FY 2015	SU (MPO)	\$ 2,550,000	Programmed
Construction	FY 2017	SU (MPO)	\$13,065,944	Programmed
Construction	FY 2018	SA (MPO)	\$ 1,100,000	Programmed
Construction	FY 2018	GMR	\$ 5,900,000	Programmed
Construction	FY 2019	SU (MPO)	\$12,034,056	Programmed

New Boca Station Update

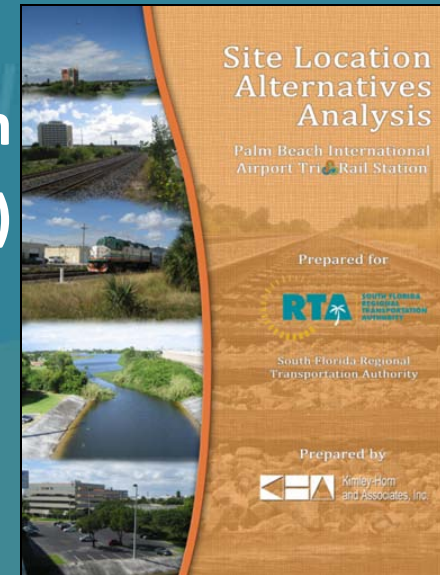
- Initial planning stages are beginning
- Consultant selected
- Notice to Proceed February 2016
- Operational Analysis - impact on existing Boca station
- Additional Considerations:
 - Cost estimates are preliminary planning level only
 - Right of Way costs unknown
 - Long-term shuttle bus funding agreement required



Phase	Fiscal Year	Fund Type	Fund Amount	Programming Status
NEPA/Design	FY 16/17	GMR	\$1,500,000	Programmed
ROW/Construction	FY 17/18	TRIP	\$8,500,000	Programmed
ROW/Construction	FY 17/18	SU (MPO)	\$8,500,000	Programmed

PBIA Tri-Rail Station Study

- Need for improved connectivity to/from Palm Beach International Airport (PBIA)
- Further analysis
- Funds available in FY 17/18
- Study to begin in FY 17/18



Phase	Fiscal Year	Fund Type	Fund Amount	Programming Status
New Tri-Rail PBIA Station Study	FY 17/18	SU (MPO)	\$250,000	Programmed

PROJECTS OF REGIONAL SIGNIFICANCE



Tri-Rail Coastal Link

Getting Southeast Florida to Work



- 80+ miles of new commuter rail service on FEC Railway corridor
 - Downtown Miami to Jupiter
 - Fully integrated expansion of Tri-Rail
- 20 to 25 new stations linking dozens of municipalities and major destinations
- Will share existing and new tracks with FEC freight and the planned All Aboard Florida (AAF) inter-city service
 - Three co-located stations with AAF
- Strong ridership potential
- Extensive economic development
- Best case full opening in FY 2021
- Likely phased implementation



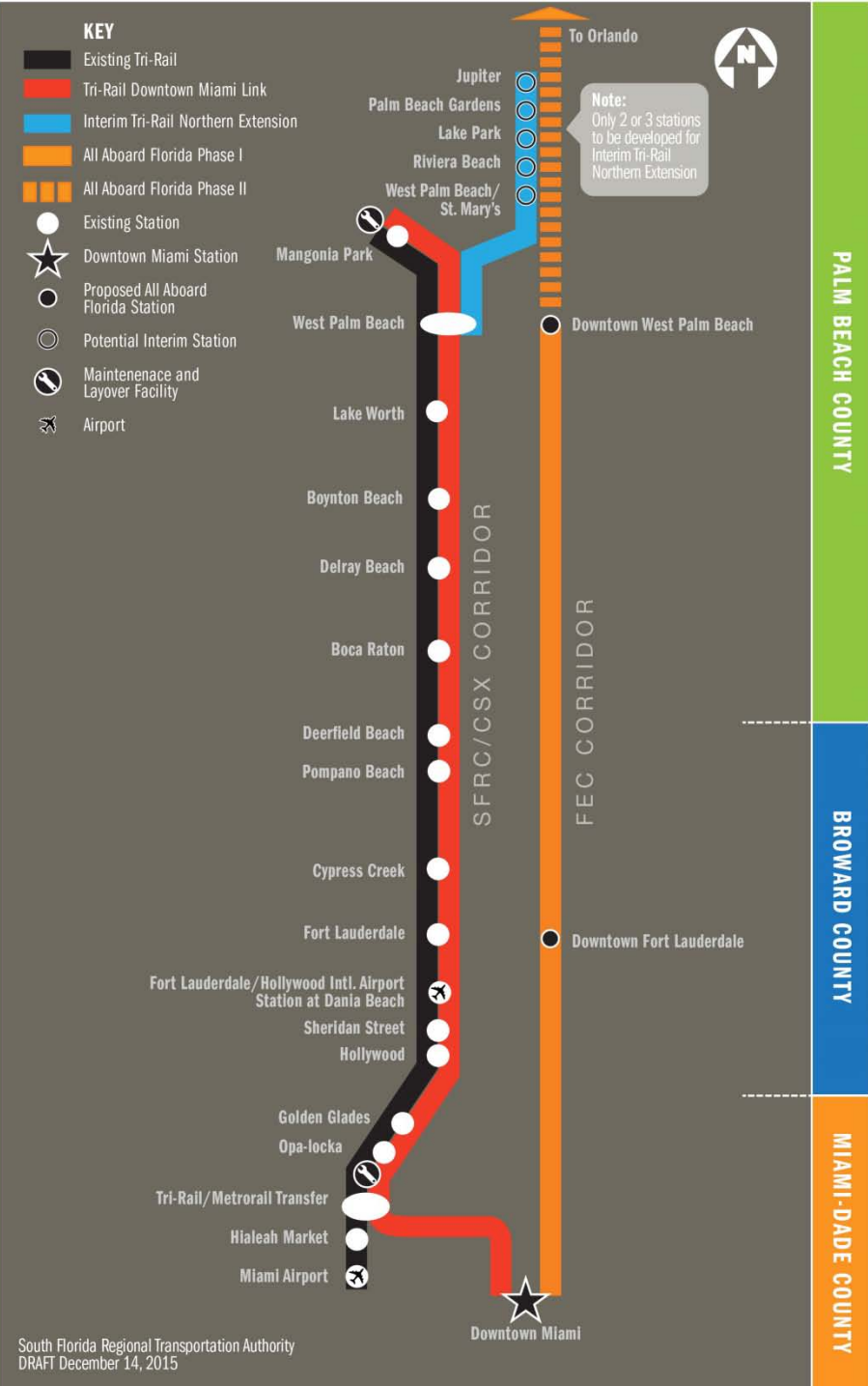
Tri-Rail Coastal Link

- Project Development phase (led by FDOT)
 - Maximum two year period
 - Station locations finalized
 - Environmental Assessment & extensive public outreach
 - Finance/funding plan development
 - Leads to best case opening of overall system in FY 2021
- Analysis of possible phased implementation
 - Potential acceleration of Aventura-Downtown Miami and West Palm Beach-Jupiter segments

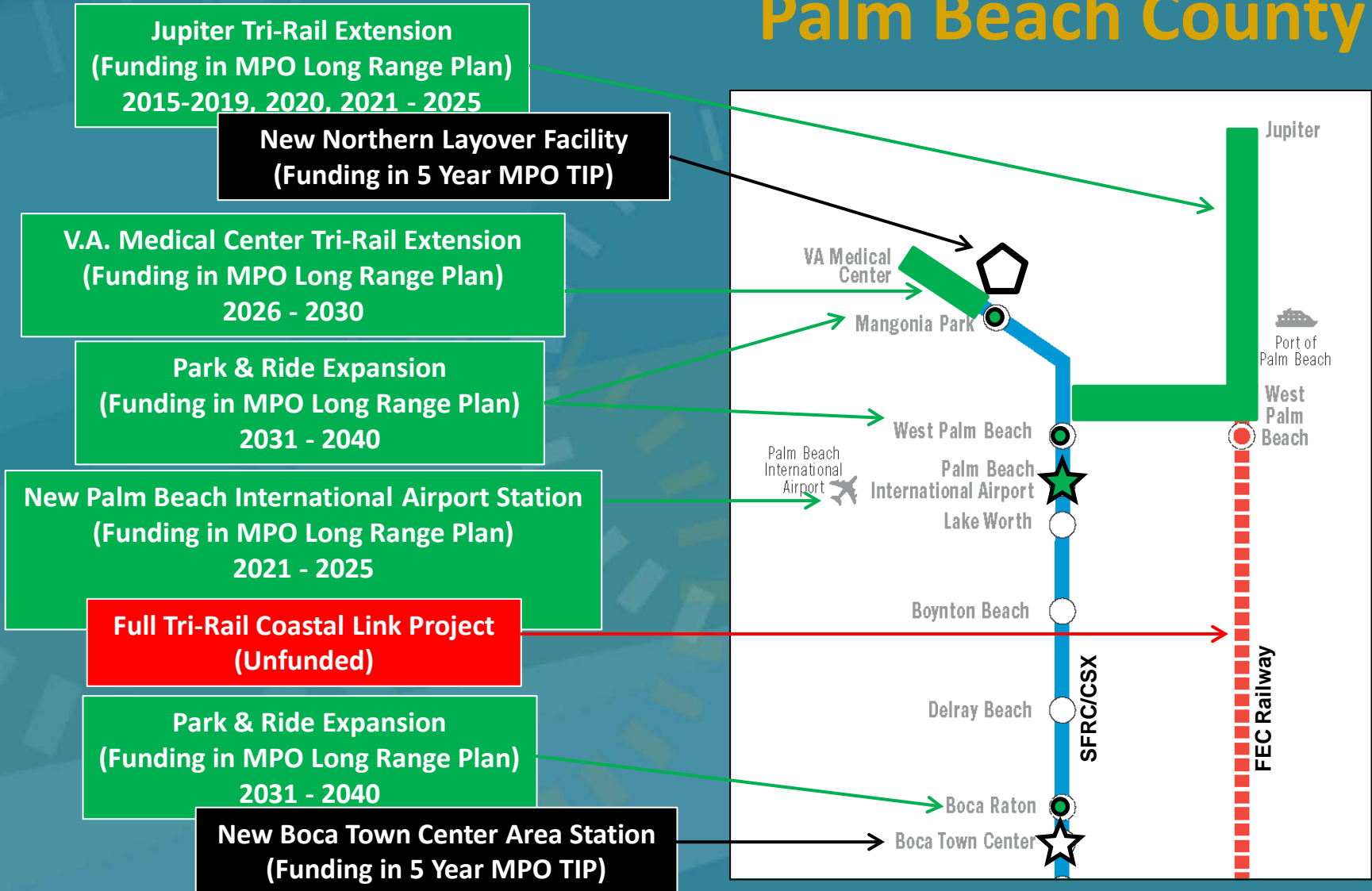
Tri-Rail

Jupiter Extension + Downtown Miami Link

- Jupiter/Northern Extension next logical step for phased Tri-Rail expansion onto FEC
- Northwood rail connection scheduled for completion by end of 2018
- Reasonable capital cost
 - Estimated \$75 million
- Strong MPO Support
 - Among top MPO project priorities
 - Funding included in MPO Long Range Plan



SFRTA/Tri-Rail Projects in Palm Beach County





**SOUTH FLORIDA
REGIONAL
TRANSPORTATION
AUTHORITY**



Vicki Gatanis, Planning & Capital Development

Barbara Handrahan, Planning & Capital Development

