

B r o w a r d M P O



2 0 3 5 L R T P
putting the pieces together

Public Workshop Presentation July 2008



What is the Broward Metropolitan Planning Organization and what does it do?

What is it?

- Transportation policy-making board
- 19 elected officials
Municipalities & County Commissioners
- More than 30 years old



What does it do?

- Responsible for transportation planning in Broward County
- Key planning activities include:
 - Long Range Transportation Plan (LRTP)
 - Transportation Improvement Plan (TIP)
 - Transit Development Plan (TDP)



What is a Long Range Transportation Plan (LRTP)?

A 20-30 year plan that helps find solutions
to our transportation concerns

- oTraffic Congestion
- oTravel Safety



What is a Long Range Transportation Plan (LRTP)?

A 20-30 year plan that helps find solutions
to our transportation concerns



Road widening



Bus



Pedestrian
Facilities



Bike lanes



What is a Long Range Transportation Plan (LRTP)?

A 20-30 year plan that helps find solutions
to our transportation concerns

Addresses Environmental Concerns
oGlobal Warming
oAir Quality



Why do we need an LRTP?

- To meet federal and state funding requirements
- To increase mobility and travel choices
- To reduce traffic congestion
- To enhance safety
- To combat environmental pollution

...and how often do we need one?

- Updated every 5 years in Broward County
- Modified every year



Who is involved in the LRTP planning process?

Broward MPO seeks input from:

South Florida Regional Transportation Authority
Palm Beach County MPO
Miami-Dade County MPO
Broward County Transit (BCT)
Florida Department of Transportation
Broward County municipalities
Broward County Public School Board
Fort Lauderdale-Hollywood Int'l Airport
Port Everglades
YOU!



What were the goals of previous Broward County LRTP's and how did they propose to meet those goals?

1970's: Highway improvement

1990's: Transportation System Integration

Early 2000's: Multimodal & Intermodal

- 2025 LRTP: Balanced, Multimodal & Safe
- 2030 LRTP: Transit, Intermodal Access, & Connectivity



**Which projects have previous
Broward County LRTP's accomplished?**



Interstate 95 expansion



Interstate 595



Interstate 75



**Which projects have previous
Broward County LRTP's accomplished?**



Bus Rapid Transit



I-595 Reversible "HOT" Lanes



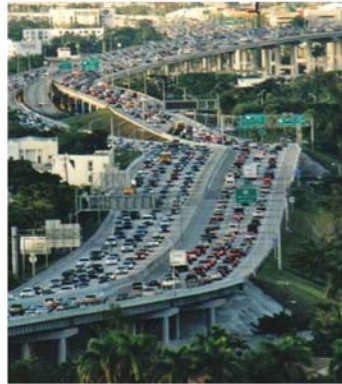
Central Broward LRT



Where are we now?

Broward County:

- Average commute time: 28 minutes
- 1.7 million Broward County residents
- 4.8 million trips per day
- 5000 miles of roadways
- 20% roads carry 80% trips



Where are we now?

Broward County:

- Average commute time: 28 minutes
- 1.7 million Broward County residents
- 4.8 million trips per day
- 5000 miles of roadways
- 20% roads carry 80% trips
- Increasing transit ridership



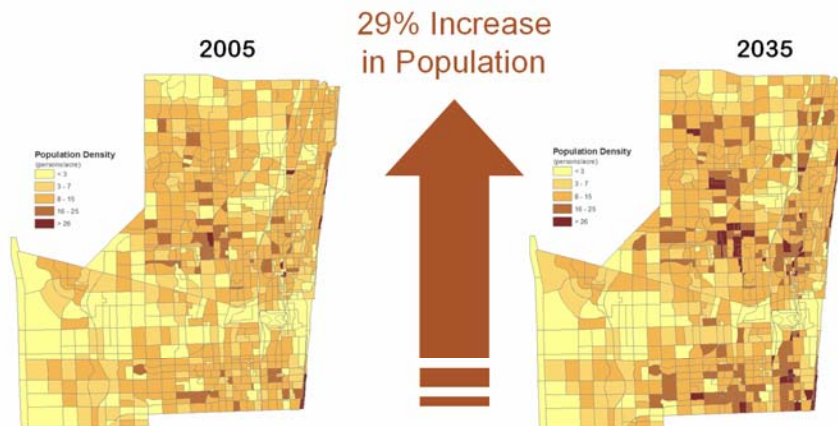
Where are we now?

Broward County:

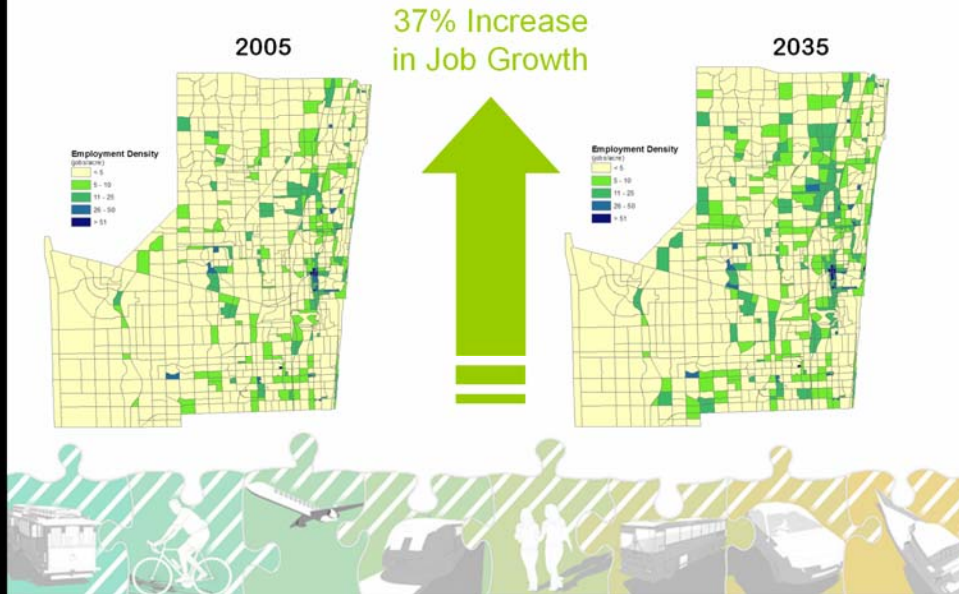
- Average commute time: 28 minutes
- 1.7 million Broward County residents
- 4.8 million trips per day
- 5000 miles of roadways
- 20% roads carry 80% trips
- Increasing transit ridership
- Record-high gas prices



What do the next 20 years look like for Broward County?



What do the next 20 years look like for Broward County?



What do the next 20 years look like for Broward County?

More Travel Time
Increased Traffic Congestion
Longer Commutes



What is your vision for Broward County in the next 20 years?



Transit-friendly



Pedestrian-friendly



What is your vision for Broward County in the next 20 years?



Suburbia



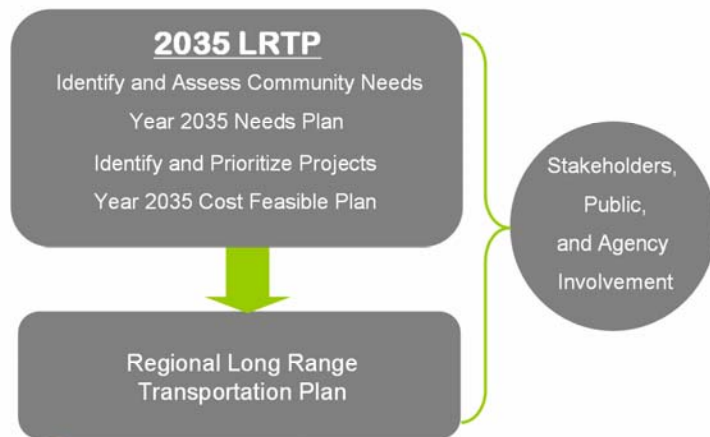
Roadways



Parking



L RTP Planning Process



How can you be involved?

Tell us what you think...



How can you be involved?

Visit the website at

www.broward2035lrtp.com

Toll-free hotline at

1-888-880-LRTP

Workshops and Public Meetings



How can you be involved?

Fill out a survey



**BROWARD MPO 2035 LONG RANGE TRANSPORTATION PLAN
PUBLIC OPINION SURVEY**

Q1. Have recent gas price increases changed your travel behavior? If so, what is the biggest change? (One response only)

Use transit more Drive less
 Drive more Change

Q2. How do you normally get to work/regular activities? (One response only)

Drive Bike Commuter/transportation
 Car/Car-pool Walk Other

Q3. If the following options were available along your travel route, and if traffic congestion increased significantly, what method would you prefer to get to work/regular activities? (One response only)

Drive/Car-pool Bike
 Drive Commuter/transportation
 Car/Car-pool Walk Other

Q4. If more public transit facilities for walking and biking were available, would you walk or bike more? (One response only)

Drive More Walk More
 Drive and Walk More Change

Q5. On a scale of 1 to 5 (5 indicating your highest preference) which investment do you think will help us better meet our needs in Broward County? Rate each factor by circling a number for each.

	Level 1	Level 2	Level 3	Level 4	Level 5
Expand transit service					
Improve transit service					
Improve transit service					
Improve transit service					
Improve transit service					
Improve transit service					
Improve transit service					
Improve transit service					
Improve transit service					
Improve transit service					

Q6. On a scale of 1 to 5 (5 indicating the highest importance) what factors would influence you to walk to transit or carpooling to work? If you already use transit or carpooling, what factor would influence your preference? Rate each factor by circling a number for each factor.

Cost of gas	Level 1	Level 2	Level 3	Level 4	Level 5
Cost of gas					
Cost of gas					
Cost of gas					
Cost of gas					
Cost of gas					
Cost of gas					
Cost of gas					
Cost of gas					
Cost of gas					
Cost of gas					

Q7. What do you think is the best use of public transit funds? (One response only)

Drive Light Rail Expansion
 Rapid Rail Commuter Rail (also in-to-go)

Q8. If you had \$100 to fund transportation improvements in Broward County, how would you use it? (Select 3 items by the following categories)

Improvement/development of public transit
 Improvement/development of roadway/highway
 Improvement/development to bridge and additional facilities
 Improvements to travel safety (over 1000)

Q9. Where do you think investments in transportation construction should be most focused? (One response only)

Between Broward County and Palm Beach County
 Between Broward County and Miami-Dade County
 Don't focus on County connections
Comments: _____

Please fill out the information below if you would like to be added to our mailing list for future updates of the Broward MPO 2035 LRTP.

Name: _____
Address: _____
Phone: _____
Email: _____

Thank you for your participation! Return your survey to be counted.
See us on page 11.



How can you be involved?



Sign-up
online



How can you be involved?

Thank you for your participation!



Presentation starts in one minute

