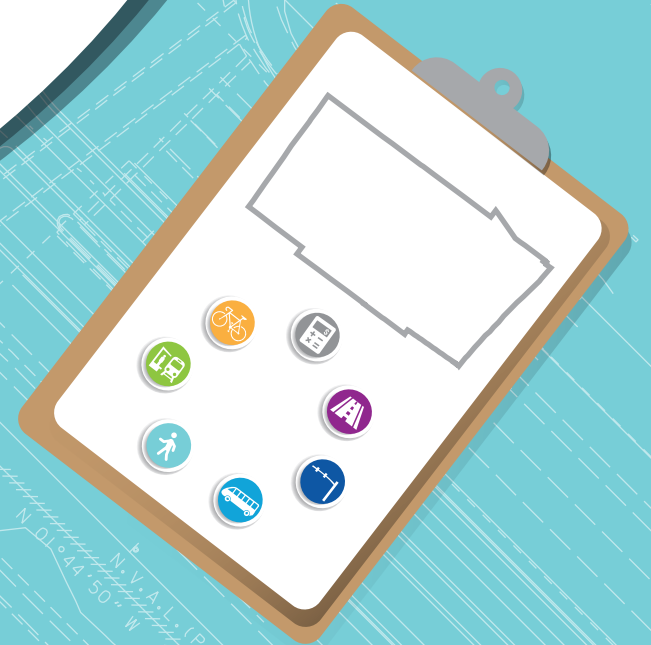


MULTIMODAL PRIORITIES LIST

FY 2022 Priorities List (to be used in the development of the next TIP FY 2023)



#MMPL

TABLE OF CONTENTS

- 1. Overview..... 1
- 2. Project Prioritization..... 5
- 3. Broward MPO Priority List..... 8
 - Unified Planning Work Program (UPWP)..... 9
 - Complete Streets and other Localized Initiatives (CSLIP)..... 11
 - Complete Streets Master Plan (CSMP)..... 24
 - Mobility Hubs..... 35
 - Roadway..... 37
 - Systems Management/Safety..... 55
 - Transit..... 61
- 4. Florida's Turnpike Priority List..... 64
- 5. "CARES Funds"..... 67



OVERVIEW

DEVELOPMENT

The Broward Metropolitan Planning Organization (MPO) is required to develop a Multimodal Priority List (MMPL) in coordination with Florida Department of Transportation (FDOT) District Four planning staff. The list is submitted to the District by August 1 annually [s.339.175 (8)(a) and (b), F.S.]. FDOT uses the MMPL to develop the Draft Tentative Work Program that is presented to the MPO each fall, which in turn is used to develop the following year's Transportation Improvement Program (TIP). The Fiscal Year (FY) 2022 MMPL is used to develop the FY 2023-2027 Draft Tentative Work Program and the FY 2023-2027 TIP.

The MMPL is a core product of the MPO that serves as a bridge between the MPO's Long Range Transportation Plan (LRTP)/Metropolitan Transportation Plan (MTP) and the TIP. Figure 1 shows the Broward MPO core product development process. The MMPL is used to set funding priorities for federal and state funds within our region. Only projects contained in the MTP are eligible for inclusion on the MMPL. Figure 2 presents the relationship among MTP, MMPL, and TIP.

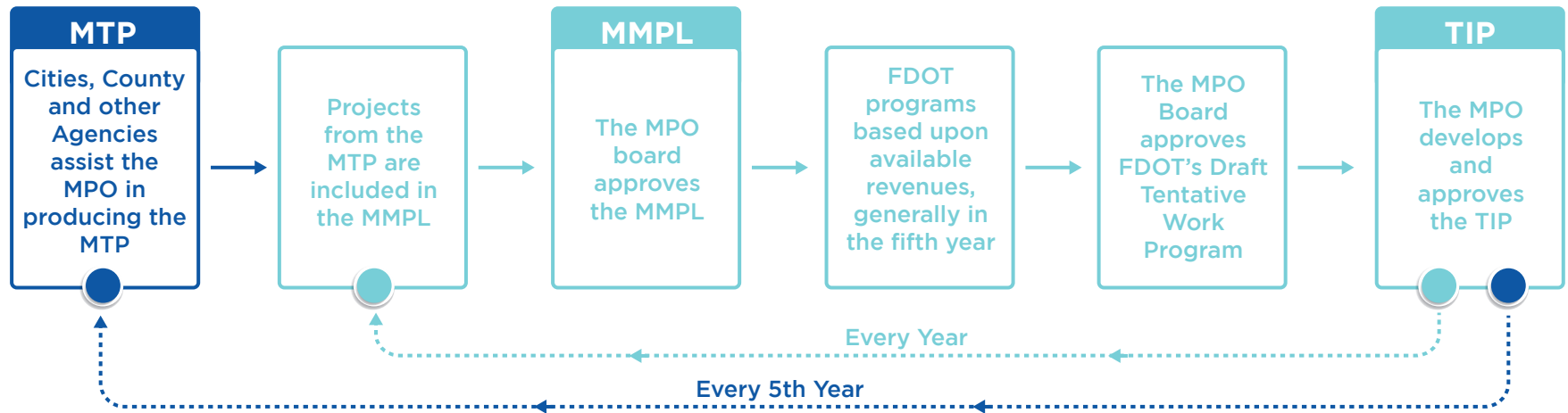


Figure 1 Core Product Development Process

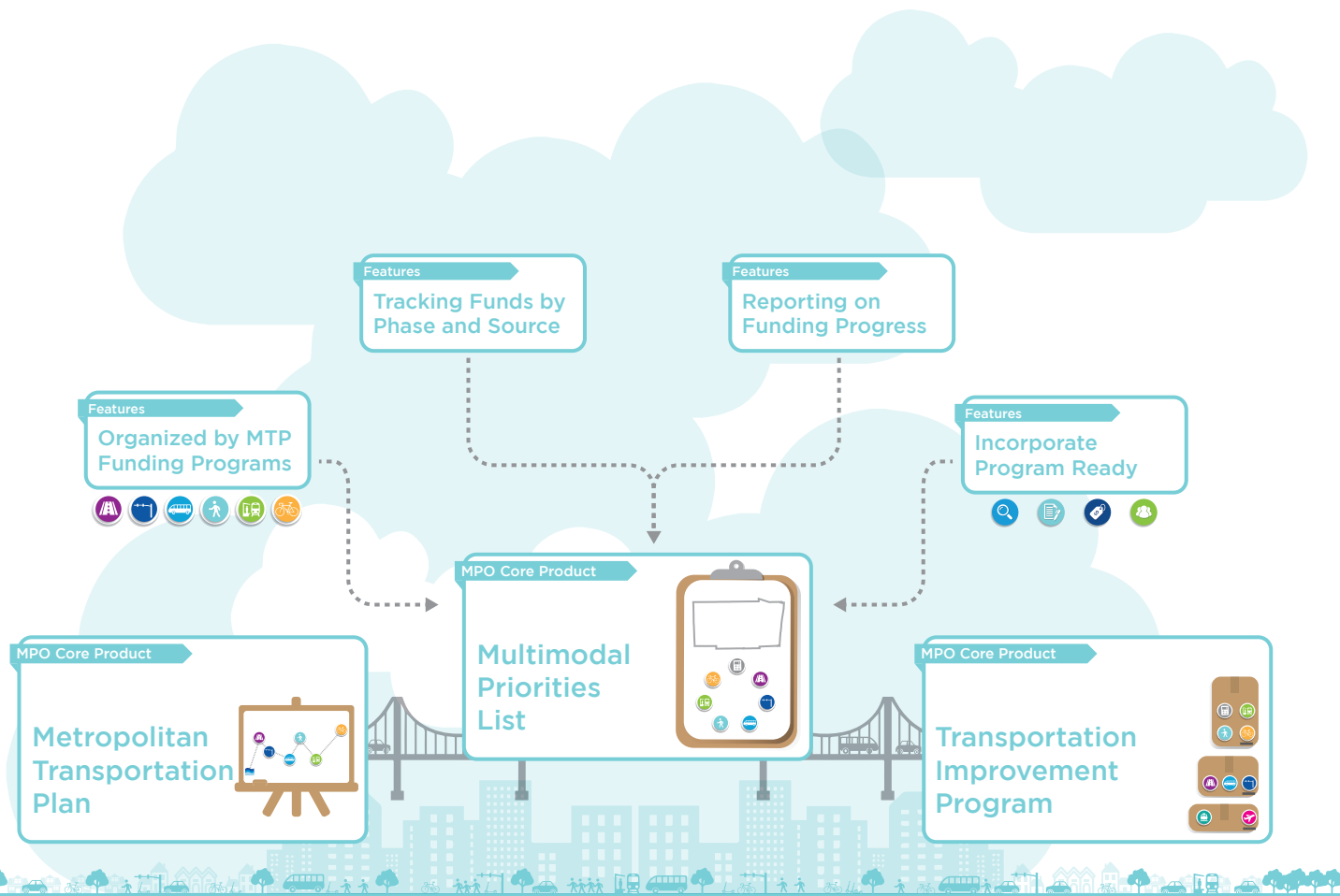


Figure 2 Relationship among MTP, MMPL and TIP

The 2045 MTP was approved at the December 2019 MPO Board meeting. The Cost Feasible Plan, as a component of the MTP including a list of prioritized projects, was approved with it. The Cost Feasible Plan includes six funding programs in order to account for the region’s multimodal transportation needs. To be consistent with the 2045 MTP and the funding sources assumed in the financial plan of the 2045 MTP, the MMPL is organized by six funding programs. It utilizes the 2045 MTP’s allocations for the Broward MPO’s attributable funds as shown in Table 1.

Table 1 Programs and funding allocation

| Program | Allocation |
|---|-------------|
| Highway/Roadway | 20% |
| Transit | 10% |
| Systems Management/Safety | 15% |
| Complete Streets and other Localized Initiatives Program (CSLIP) | 20% |
| Complete Streets Master Plan (CSMP) | 25% |
| Mobility Hubs | 10% |
| Total | 100% |

In addition, the MMPL assigns a preferred funding source for each prioritized project that is consistent with the 2045 MTP’s cost feasible plan. The funding sources are indicated as State, Federal, Local or any combination of the three. To facilitate project delivery, the MMPL emphasizes a “Program Ready” concept. “Program ready” means that a project includes a clear scope of work, approved resolution, cost estimate, and collaboration with partners. Projects that meet all of these four criteria are eligible for funding. For an example of how these concepts are illustrated in the MMPL, please refer to Figure 3.

UNIFIED PLANNING WORK PROGRAM (UPWP)

Besides the six programs mentioned earlier, funding for the Broward MPO’s Unified Planning Work Program (UPWP)/budget is top priority. The MPO’s UPWP contains the agency’s Strategic Business Plan activities, planning efforts, and operating budget for a two-year period. The UPWP includes a description of the planning work and resulting products, who will perform the work, time frames for completing the work, the cost of the work, and the source(s) of funds. Further, the UPWP provides a comprehensive picture to citizens and stakeholders who wish to see how federal and state transportation planning dollars are to be spent by the Broward MPO, local governments, and transit agencies providing services to Broward. The UPWP is developed by MPO staff in consultation with partner agencies, municipal staff, and input from local citizens and stakeholders. The information collected is incorporated into the UPWP and budgeted accordingly. To support services that the MPO provides to the Broward region, the Broward MPO assigns Surface Transportation Program – Urban areas >200K (SU) funds to the UPWP. Available MPO attributable funds for the six programs excludes SU funds already allocated to UPWP.

HOW TO READ THE BROWARD MPO PRIORITY LIST

A Priority
 Current Program Priority → **21** Priority
 2021-27
 ↑ ↑
 Prior Year Program Priority
 2021-New
 ←
 Projects newly added project to the MMPL will be designated as "New".

C Financial Information
 Phase
 Year Funds are Programmed
 Amount Funded
 Funding Needed
 Total Project Cost

E Program Readiness
 Green "Yes" indicates project meets criteria
 Red "No" indicates project does not meet criteria

Scope of work: Yes
 Resolution: No
 Cost Estimate: Yes
 Collaboration among partners: No

B Project Characteristics
 Project Name with Limits
 Type of Work
 Description with Project Sponsor
 Proposed Study
 City
 Ownership
 LAP

D Funding Source

- State Funds
- Federal Funds
- Local Funds
- Sate and Local Funds
- State and Federal Funds
- Federal and Local Funds
- Federal, State, and Local Funds

F MTP Reference
 MTP Page Number
 MTP Timeframe:
 2021-2025 ← Indicates projects programmed in FDOT's Work Program
 2025
 2026-2030
 2031-2035
 2036-2045 ← Indicates MTP's final timeframe

| Roadway | | | | | | | Roadway MPO Adopted Program Funding Goal 20% | |
|---|-------|------|------|------|---------|-----------|--|----------------|
| Phase | <2022 | 2022 | 2023 | 2024 | 2025 | 2026 | Amount Funded | Funding Needed |
| 07 Priority 2021-09 SW 130TH AVE FROM SW 8TH ST TO SR-84 - FM# 4463811 Type of Work: FEASIBILITY STUDY Proposed Study: Feasibility LAP: NO 2021 MPO HIGHWAY PRIORITY# 9 IS R/W NEEDED MTP Page # 5-16 MTP Timeframe: 2026-2030 | | | | | 500,000 | | 500,000 | 0 |
| PDE | 0 | 0 | 0 | 0 | 500,000 | 0 | 500,000 | 0 |
| PE | 0 | 0 | 0 | 0 | 0 | 0 | 0 | 686,680 |
| CST | 0 | 0 | 0 | 0 | 0 | 0 | 0 | 5,394,800 |
| Total | 0 | 0 | 0 | 0 | 500,000 | 0 | 500,000 | 6,081,480 |
| CITY: DAVIE OWNERSHIP: LOCAL | | | | | | | Total Project Cost Estimate: 6,581,480 | |
| 08 Priority 2021-10 SW 136TH AVE FROM SW 26TH ST TO SW 6TH CT - FM# 4463812 Type of Work: PD&E/EMO STUDY Proposed Study: PD&E LAP: NO 2021 MPO PRIORITY# 10 WIDEN 2 TO 4 LANES IS R/W NEEDED MTP Page # 5-16 MTP Timeframe: 2026-2030 | | | | | 500,000 | 1,750,000 | 2,250,000 | 0 |
| PDE | 0 | 0 | 0 | 0 | 500,000 | 1,750,000 | 2,250,000 | 0 |
| PE | 0 | 0 | 0 | 0 | 0 | 0 | 0 | 2,405,320 |
| CST | 0 | 0 | 0 | 0 | 0 | 0 | 0 | 13,206,000 |
| Total | 0 | 0 | 0 | 0 | 500,000 | 1,750,000 | 2,250,000 | 15,611,320 |
| CITY: DAVIE OWNERSHIP: LOCAL | | | | | | | Total Project Cost Estimate: 17,861,320 | |
| 09 Priority 2021-11 SR-822/SHERIDAN STREET FROM DIXIE HIGHWAY TO SR-5/US 1 - FM# 4479221 Type of Work: PD&E/EMO STUDY Proposed Study: PD&E LAP: NO 2021 MPO PRIORITY# 11 IS R/W NEEDED MTP Page # 5-11 MTP Timeframe: 2025 | | | | | 505,000 | | 505,000 | 0 |
| PDE | 0 | 0 | 0 | 0 | 505,000 | 0 | 505,000 | 0 |
| PE | 0 | 0 | 0 | 0 | 0 | 0 | 0 | 941,147 |
| ROW | 0 | 0 | 0 | 0 | 0 | 0 | 0 | 38,332,475 |
| CST | 0 | 0 | 0 | 0 | 0 | 0 | 0 | 4,277,940 |
| Total | 0 | 0 | 0 | 0 | 505,000 | 0 | 505,000 | 43,551,562 |
| CITY: DANIA BEACH/HOLLYWOOD OWNERSHIP: STATE | | | | | | | Total Project Cost Estimate: 44,056,562 | |

Figure 3 Sample of MMPL

PROJECT PRIORITIZATION

The 2035 LRTP established a new paradigm to provide a balanced transportation system with greater investments toward alternative modes such as transit, bicycle and pedestrian facilities, and smart growth policies. Both the Commitment 2040 and MTP 2045 follow this set standard. In order to guarantee that the transportation investments are balanced among the transportation modes, percentages agreed upon in the MTP 2045 by the MPO Board (during the MTP's development) were used to distribute revenue among the six programs. Projects within each program were prioritized according to criteria established for each individual program. The following describes the prioritization process for each of the six programs.

COMPLETE STREETS AND OTHER LOCALIZED INITIATIVES PROGRAM (CSLIP)

CSLIP provides funding for small local transportation projects that will improve safety and mobility for all transportation users. The MPO facilitates an annual competitive grant program to fund projects such as Complete Streets projects, traffic calming and intersection improvements, ADA compliance upgrades, bus shelters, bike racks, and technology advancements (e.g., transit signal priority and traffic control devices). Projects funded through this program are generally around \$2 million each.

CSLIP uses an objective tool to evaluate and rank the application submitted. This tool was developed with direction from the Board and uses several geographic datasets to score the projects. Evaluation criteria weights are 30% for safety, 24% for economic development, 23% for connectivity, and 23% for mobility.

COMPLETE STREETS MASTER PLAN (CSMP)

Complete streets are built for all users, emphasizing the safe and efficient movement of people including pedestrians, bicyclists, and transit riders. The MPO developed a CSMP to guide future investments by creating a prioritized list of projects based on technical, data-driven analysis and community input. Funding is allocated to this program based on the prioritized order established in the CSMP. Projects funded through this program are generally greater than \$2 million.

Prioritization is a process of scoring and ranking the Complete Streets projects and Super Connectors based on identified criteria or variables. The criteria is consistent with the goals and objectives established in the Commitment 2040 LRTP, continues in the Commitment 2045 MTP, and builds upon the format and content of the CSLIP evaluation criteria. The criteria between the two differ slightly but fit within the same theme.

 For CSLIP details, please visit the CSLIP policies link at: https://browardmpo.org/images/WhatWeDo/CSLIP/Round_5_Policies.pdf and the evaluation chart at: http://www.browardmpo.org/images/WhatWeDo/CSLIP/EvaluationGraphic_Draft-v016.pdf

 For CSMP details, please refer to the CSMP prioritization criteria link at: http://www.browardmpo.org/images/CSMP/CSMP_prioritization_criteria.pdf

ROADWAY & TRANSIT PROGRAMS

Funding for the roadway program is allotted to transportation improvements that increase roadway capacity by building new roadways, adding lanes to existing roadways, or building/expanding interchanges and major intersections. Funding may also be allocated to concept studies, preliminary engineering, and design to support the development of roadway capacity projects. The transit funding program includes transit capital investments such as transit vehicles, transit technology investments (e.g., fare collection equipment, automatic passenger counters, vehicle location, etc.), and roadway improvements designed to serve as exclusive lanes for transit services (for which operating funding has been identified).

Projects in the Roadway Program and Transit Program follow the same prioritization process established in the MTP 2045. The prioritization criteria is based upon the MTP's Goals and Objectives, adopted by the MPO Board on May 10, 2018, and the Performance Measures developed to ensure consistency with the FAST Act. These six measures, which are referred to as planning factors, were identified as best representing the MTP's Goals and Objectives they are: (1) Mobility: Providing high speed and reliable travel between major activity centers and destinations. The focus of mobility is to get from one place to another as quickly as possible and typically is characterized by longer trips. (2) Accessibility: Providing access and circulation within higher-density, mixed-use places; tend to be shorter trips. (3) Safety: Reducing the number and severity of crashes. (4) Equity: Ensuring that benefits and impacts are shared among Broward's population. (5) Environmental Stewardship: Protecting the natural and built environment. (6) Economic Vitality: Supporting economic activity and businesses.

Each of the six planning factors were given a weighted value to align it with its importance to the community. The weighting values were determined through an interactive polling process with the Technical Advisory Committee (TAC), the Citizens' Advisory Committee (CAC), and the MPO Board. The values obtained were averaged and resulted: Mobility – 20.5, Accessibility – 20.8, Safety – 18.7, Equity – 14.3, Environmental Stewardship – 12.8, and Economic Vitality – 13.0. Six matrixes with prioritization criteria were developed for each planning factor respectively. These matrixes include evaluation criteria, assessment scoring, and scoring guidelines. Through several discussions with the TAC and CAC, the prioritization criteria were revised and shown in tables 1 through 6 in the Technical Report #4 Project Prioritization Process.

Several key changes that resulted from this process were:

- The inclusion of additional Safety criteria to better reflect the importance of this issue;
- The addition of a positive criteria for projects that may improve environmental conditions;
- Clarifications to several criteria to ensure that both roadway and transit projects were evaluated; and
- Adjustments to the Sea Level Rise Mitigation criteria to account for projects that improve the resiliency of infrastructure to extreme weather, regardless of the project's location in a defined vulnerability area.

It is important to note that whereas this process has been developed for the 2045 MTP, these prioritization criteria and planning factor weightings can change over time as the Emphasis Areas stressed by the federal and state government change and local stakeholder preferences change. Future MTPs will address these changes with adjustments to these factors. In addition to an overall process, the Broward MPO project prioritization criteria were developed with the following considerations:

- Projects are to be evaluated regardless of their mode (roadway, transit, Transportation Systems Management and Operations (TSM&O), etc.).
- Scores are to be normalized to account for variance in maximum points awarded in each planning factor group.
- An initial recommendation of rounding negative scores to 0 was reconsidered at the TAC's request to better reflect the potential negative impacts of a project. Thus, negative scores are carried through.



SYSTEMS MANAGEMENT/SAFETY PROGRAM

Funding allocated to this program is to be focused on Transportation Systems Management and Operations (TSM&O), a program based on actively managing the multimodal transportation network, measuring performance, streamlining and improving the existing system, promoting effective cooperation/collaboration, and delivering positive safety and mobility outcomes to the traveling public. Example projects funded in this program include signal timing/coordination and major safety improvements. Funding in this program is also set aside to support studies to identify, prioritize, and implement safety improvements.


TSM&O projects on-state highway system were selected and prioritized by the FDOT. Safety improvement study projects were selected and prioritized according to the severity index as part of the Commitment 2045 MTP. The severity index is a measure that looks at total crashes and crash severity. It uses a weighted average (higher score for incapacitating and fatal crashes) to develop an index that ranks locations in terms of their importance for future safety analysis and improvements. The safety improvement projects identified through safety studies will be eligible for funding allocated to the Systems Management/Safety Program, as discussed previously. MPO staff are coordinating with FDOT District 4 and other local partners to lead these studies in the near future.

MOBILITY HUB PROGRAM

The Mobility Hub concept was initially introduced in the 2035 LRTP. The Mobility Hub program continues to be included in the 2040 LRTP and 2045 MTP. Mobility Hubs are transit access points with frequent transit service, high development potential, and a critical point for travel demand or transfers within the transit system. Funding through this program is available to help support the collaborative development of Mobility Hubs as communities identify and commit to opportunities that further the objectives of this program.

Prioritization of Mobility Hub projects is based on identified criteria or variables. Guided by the goals in the 2045 MTP, the recommended evaluation framework measures a candidate location's existing market and network readiness by incorporating the best available information into the evaluation matrix for review. The matrix includes measures of existing trip producers and attractors, potential trip producers, market ready attractors, existing transit ridership, and frequency. The prediction of theoretical future service would not be the driving factor for the evaluation although potential service is a consideration. The third factor in the evaluation is sponsor readiness, which is the willingness of the local government to support Mobility Hub investment.

 For Systems Management/Safety details, please refer to 2045 MTP at: <http://www.browardmpo.org/index.php/mtp-documents>

 For Mobility Hub details, please refer to the Revisit & Update Mobility Hubs Program - Assess Current Methodology Technical Memorandum link at: http://www.browardmpo.org/images/2-TM1-Mobility_Hubs_Revisit-Assess_Current_Methodology-January_2018_FINAL.pdf

BROWARD MPO PRIORITY LIST



| Phase | <2022 | 2022 | 2023 | 2024 | 2025 | 2026 | Amount Funded | Funding Needed | |
|-------------------|---|------------------|------------------|------------------|------------------|------------------|--|------------------|--|
| 01 | BROWARD MPO UPWP - FM# 439324-3-4-5 | | | | | | Funding Source: FEDERAL | | |
| 2021-01 | Type of Work: TRANSPORTATION PLANNING | | | | | | Proposed Study: N/A | | |
| | 2021 MPO PRIORITY #1 ADDITIONAL 1M FROM 435174-1 FY21. *Allocate \$650,000 of CARES funds to FY 2023. Allocate \$500,000 of CARES funds to FY 2024. | | | | | | LAP: N/A | | |
| | | | | | | | Yes Yes Yes Yes | | |
| | | | | | | | MTP Page # 1-2 | | |
| | | | | | | | MTP Timeframe: | | |
| PLN | 0 | 4,657,558 | 4,000,000 | 4,500,000 | 5,000,000 | 5,000,000 | 23,157,558 | 5,500,000 | |
| PLN-CARES* | 0 | 0 | 0 | 0 | 0 | 0 | 0 | 1,150,000 | |
| Total | 0 | 4,657,558 | 4,000,000 | 4,500,000 | 5,000,000 | 5,000,000 | 23,157,558 | 6,650,000 | |
| CITY: BROWARD MPO | | | | OWNERSHIP: N/A | | | Annual Project Cost Estimate: 5,500,000 | | |
| 02 | LOCAL DELIVERY PLANNING STUDY - FM# | | | | | | Funding Source: FEDERAL | | |
| 2021-New | Type of Work: TRANSPORTATION PLANNING | | | | | | Proposed Study: N/A | | |
| | *Allocate \$150,000 of CARES funds to FY 2023. Allocate \$150,000 of CARES funds to FY 2024. | | | | | | LAP: N/A | | |
| | | | | | | | Yes Yes Yes Yes | | |
| | | | | | | | MTP Page # 1-2 | | |
| | | | | | | | MTP Timeframe: | | |
| PLN | 0 | 0 | 0 | 0 | 0 | 0 | 0 | 150,000 | |
| PLN-CARES* | 0 | 0 | 0 | 0 | 0 | 0 | 0 | 300,000 | |
| Total | 0 | 0 | 0 | 0 | 0 | 0 | 0 | 450,000 | |
| CITY: BROWARD MPO | | | | OWNERSHIP: N/A | | | Annual Project Cost Estimate: 150,000 | | |

CSLIP

COMPLETE STREETS AND OTHER LOCALIZED INITIATIVES PROGRAM

PROGRAM



LEGEND:

 PRIORITIZED CSLIP PROJECTS



CSLIP

CSLIP MPO Adopted Program Funding Goal 20%

| Phase | <2022 | 2022 | 2023 | 2024 | 2025 | 2026 | Amount Funded | Funding Needed |
|-------|-------|------|------|------|------|------|---------------|----------------|
|-------|-------|------|------|------|------|------|---------------|----------------|

| | | | | | | | | | |
|--|----------|---|----------|----------------------------|----------|-----------------|-------------------------------------|------------------|------------------|
| 01 2021-01 | Priority | NW 1ST ST FROM BRYAN ROAD TO SR-5/US-1 - FM# 4439491 | | | | | Funding Source: FEDERAL | | |
| | | Type of Work: BIKE LANE/SIDEWALK | | Proposed Study: N/A | | LAP: Yes | Yes | Yes | Yes |
| PROVIDE WIDER SIDEWALKS, BIKE LANES, ON-STREET PARKING, TRAFFIC CALMING, ENHANCED CROSSWALKS AND LIGHTING AND PEDESTRIAN CROSSING OF THE FEC RR ON NW 1ST FROM BRYAN BRYAN RD. TO SR-5/US-1. Temporally removed from Draft Tentative Work Program FY 2022 - 2026 because of LAP transitioning and anticipating to be brought back in the Draft Tentative Work Program FY 2023-2027 | | | | | | | | | |
| ENV | 0 | 0 | 0 | 0 | 0 | 0 | 0 | 30,000 | |
| PE | 0 | 0 | 0 | 0 | 0 | 0 | 0 | 477,001 | |
| CST | 0 | 0 | 0 | 0 | 0 | 0 | 0 | 2,401,761 | |
| Total | 0 | 0 | 0 | 0 | 0 | 0 | 0 | 2,908,762 | |
| CITY: DANIA BEACH | | | | OWNERSHIP: LOCAL | | | Total Project Cost Estimate: | | 2,908,762 |

| | | | | | | | | | |
|---|----------|---|----------|----------------------------|----------|-----------------|-------------------------------------|------------------|------------------|
| 02 2021-02 | Priority | ORANGE DRIVE FROM SW 92ND AVENUE TO SW 62ND AVENUE - FM# 4439501 | | | | | Funding Source: FEDERAL | | |
| | | Type of Work: BIKE LANE/SIDEWALK | | Proposed Study: N/A | | LAP: Yes | Yes | Yes | Yes |
| PROVIDE 5 FT SIDEWALKS TO FILL IN EXISTING GAPS IN NETWORK CROSSWALKS, ADA CURB RAMPS AND PEDESTRIAN BRIDGE INCLUDED. Temporally removed from Draft Tentative Work Program FY 2022 - 2026 because of LAP transitioning and anticipating to be brought back in the Draft Tentative Work Program FY 2023-2027 | | | | | | | | | |
| ENV | 0 | 0 | 0 | 0 | 0 | 0 | 0 | 30,000 | |
| PE | 0 | 0 | 0 | 0 | 0 | 0 | 0 | 288,539 | |
| CST | 0 | 0 | 0 | 0 | 0 | 0 | 0 | 691,697 | |
| Total | 0 | 0 | 0 | 0 | 0 | 0 | 0 | 1,010,236 | |
| CITY: DAVIE | | | | OWNERSHIP: LOCAL | | | Total Project Cost Estimate: | | 1,010,236 |

| Phase | <2022 | 2022 | 2023 | 2024 | 2025 | 2026 | Amount Funded | Funding Needed |
|-------|-------|------|------|------|------|------|---------------|----------------|
|-------|-------|------|------|------|------|------|---------------|----------------|

| | | | | | | | | | | |
|--|----------|---|----------|----------------------------|----------|---|--------------------------------|------------------|----------------|------------|
| 03 2021-03 | Priority | CITY OF LAUDERDALE LAKES TRAFFIC CALMING VARIOUS LOCATIONS - FM# 4439511 | | | | | Funding Source: FEDERAL | | | |
| | | Type of Work: MISCELLANEOUS CONSTRUCTION | | Proposed Study: N/A | | LAP: Yes | Yes | Yes | Yes | Yes |
| PROVIDE TRAFFIC CALMING DEVICES SUCH AS DECORATIVE PAVERS, SPEED BUMPS, PAVEMENT CROSSWALKS, ISLAND AND ROUNDABOUT IN SEVERAL LOCATIONS THROUGHOUT THE CITY**SEE WP45** NW 24 ST. FROM SR-7 TO NW 34 AVE.; NW34 AVE. FROM NW 24 ST. TO NW 23 CT.; NW 23 CT. FROM NW 34 AVE. TO NW 32 TERR. NW32 TERR. FROM NW 23 CT. TO NW 21 ST.; NW 33 ST. FROM NW 46 AVE TO NW 43 AVE.; NW 43 AVE. FROM SR-816/OAKLAND PARK BLVD TO NW ST.; NW 36 ST. FROM NW 43 AVE. TO SR-7; NW 34 ST. FROM SR-7 TO NW 33 AVE.; NW 35 AVE. FROM SR-816/OAKLAND PARK BLVD TO NW 37 AVE.; NW41 ST. FROM NW 52 AVE. TO NW 44 AVE. Temporarily removed from Draft Tentative Work Program FY 2022 - 2026 because of LAP transitioning and anticipating to be brought back in the Draft Tentative Work Program FY 2023-2027 | | | | | | | MTP Page # 5-3 | | MTP Timeframe: | |
| ENV | 0 | 0 | 0 | 0 | 0 | 0 | 0 | 30,000 | | |
| PE | 0 | 0 | 0 | 0 | 0 | 0 | 0 | 507,446 | | |
| CST | 0 | 0 | 0 | 0 | 0 | 0 | 0 | 1,248,980 | | |
| Total | 0 | 0 | 0 | 0 | 0 | 0 | 0 | 1,786,426 | | |
| CITY: LAUDERDALE LAKES | | | | OWNERSHIP: LOCAL | | Total Project Cost Estimate: 1,786,426 | | | | |

| | | | | | | | | | | |
|---|----------|---|----------|----------------------------|----------|---|--------------------------------|------------------|----------------|------------|
| 04 2021-04 | Priority | BONAVENTURE BLVD. FROM INDIAN TRACE TO SR-84 - FM# 4439521 | | | | | Funding Source: FEDERAL | | | |
| | | Type of Work: BIKE LANE/SIDEWALK | | Proposed Study: N/A | | LAP: Yes | Yes | Yes | Yes | Yes |
| PROVIDE 4'-5' WIDE BIKE LANES. Temporarily removed from Draft Tentative Work Program FY 2022 - 2026 because of LAP transitioning and anticipating to be brought back in the Draft Tentative Work Program FY 2023-2027 | | | | | | | MTP Page # 5-3 | | MTP Timeframe: | |
| ENV | 0 | 0 | 0 | 0 | 0 | 0 | 0 | 30,000 | | |
| PE | 0 | 0 | 0 | 0 | 0 | 0 | 0 | 516,000 | | |
| CST | 0 | 0 | 0 | 0 | 0 | 0 | 0 | 2,339,256 | | |
| Total | 0 | 0 | 0 | 0 | 0 | 0 | 0 | 2,885,256 | | |
| CITY: WESTON | | | | OWNERSHIP: LOCAL | | Total Project Cost Estimate: 2,885,256 | | | | |

| Phase | <2022 | 2022 | 2023 | 2024 | 2025 | 2026 | Amount Funded | Funding Needed |
|-------|-------|------|------|------|------|------|---------------|----------------|
|-------|-------|------|------|------|------|------|---------------|----------------|

| | | | | | | | | | |
|--|----------|--|----------|----------------------------|----------|-----------------|--------------------------------|------------------|------------|
| 05 2021-06 | Priority | CITY OF MIRAMAR COMPLETE STREETS PHASE IV - FM# 4439771 | | | | | Funding Source: FEDERAL | | |
| | | Type of Work: SIDEWALK | | Proposed Study: N/A | | LAP: Yes | Yes | Yes | Yes |
| PROVIDE SIDEWALKS, PEDESTRIAN LIGHTING,CROSSWALKS AND ADA-COMPLIANT RAMPS IN VARIOUS LOCATIONS *SEE WP45* SW 31 ST. FROM SW61 AVE. TO SW 62 AVE., SW 61 AVE. FROM SW30TH ST. TO SW 32 ST., SW 34 ST. FROM SW 62 AVE.TO SR-7, SW 39 ST. FROM 62 AVE. TO SR-7. Temporally removed from Draft Tentative Work Program FY 2022 - 2026 because of LAP transitioning and anticipating to be brought back in the Draft Tentative Work Program FY 2023-2027 | | | | | | | | | |
| ENV | 0 | 0 | 0 | 0 | 0 | 0 | 0 | 30,000 | |
| PE | 0 | 0 | 0 | 0 | 0 | 0 | 0 | 438,016 | |
| CST | 0 | 0 | 0 | 0 | 0 | 0 | 0 | 1,052,446 | |
| Total | 0 | 0 | 0 | 0 | 0 | 0 | 0 | 1,520,462 | |

MTP Page # 5-3 MTP Timeframe:

CITY: MIRAMAR OWNERSHIP: LOCAL Total Project Cost Estimate: 1,520,462

| | | | | | | | | | |
|---|----------|--|----------|----------------------------|----------|-----------------|--------------------------------|------------------|------------|
| 06 2021-07 | Priority | SHADY BANKS AND TARPON RIVER NEIGHBORHOOD VARIOUS LOCATIONS - FM# 4439781 | | | | | Funding Source: FEDERAL | | |
| | | Type of Work: BIKE LANE/SIDEWALK | | Proposed Study: N/A | | LAP: Yes | Yes | Yes | Yes |
| PROVIDE SIDEWALK TO FILL IN MISSINGLINKS, PEDESTRIAN LIGHTING, TRAFFIC CALMING, AND ADA-COMPLIANT RAMPS IN VARIOUS LOCATIONS. Temporally removed from Draft Tentative Work Program FY 2022 - 2026 because of LAP transitioning and anticipating to be brought back in the Draft Tentative Work Program FY 2023-2027 | | | | | | | | | |
| ENV | 0 | 0 | 0 | 0 | 0 | 0 | 0 | 30,000 | |
| PE | 0 | 0 | 0 | 0 | 0 | 0 | 0 | 355,610 | |
| CST | 0 | 0 | 0 | 0 | 0 | 0 | 0 | 1,619,369 | |
| Total | 0 | 0 | 0 | 0 | 0 | 0 | 0 | 2,004,979 | |

MTP Page # 5-3 MTP Timeframe:

CITY: FORT LAUDERDALE OWNERSHIP: LOCAL Total Project Cost Estimate: 2,004,979

| | | | | | | | | | |
|--|----------|---|----------|----------------------------|----------|-----------------|--------------------------------|----------------|------------|
| 07 2021-12 | Priority | UTOPIA DRIVE FROM RIVIERA BOULEVARD TO PEMBROKE ROAD - FM# 4455241 | | | | | Funding Source: FEDERAL | | |
| | | Type of Work: BIKE PATH/TRAIL | | Proposed Study: N/A | | LAP: Yes | Yes | Yes | Yes |
| SCOPE INCLUDE THE FOLLOWING: CONSTRUCTION OF6FT WIDE MULTI- USE ASPHALT PATH ON THE LEFT SIDE OF THE ROAD;TWO PEDESTRIAN POLES TO BE REPLACED. Temporally removed from Draft Tentative Work Program FY 2022 - 2026 because of LAP transitioning and anticipating to be brought back in the Draft Tentative Work Program FY 2023-2027 | | | | | | | | | |
| ENV | 0 | 0 | 0 | 0 | 0 | 0 | 0 | 30,000 | |
| PE | 0 | 0 | 0 | 0 | 0 | 0 | 0 | 291,000 | |
| CST | 0 | 0 | 0 | 0 | 0 | 0 | 0 | 596,475 | |
| Total | 0 | 0 | 0 | 0 | 0 | 0 | 0 | 917,475 | |

MTP Page # 5-30 MTP Timeframe:

CITY: MIRAMAR OWNERSHIP: LOCAL Total Project Cost Estimate: 917,475

| | | |
|-----------------------|-------------------------|-------------------------|
| State Funds | Federal Funds | Local Funds |
| State and Local Funds | State and Federal Funds | Federal and Local Funds |

| Phase | <2022 | 2022 | 2023 | 2024 | 2025 | 2026 | Amount Funded | Funding Needed |
|-------|-------|------|------|------|------|------|------------------|-------------------|
|-------|-------|------|------|------|------|------|------------------|-------------------|

| | | | | | | | | | | |
|--|----------|--|----------|----------------------------|----------|--------------------------------|-----------------|------------------|----------------|------------|
| 08 2021-14 | Priority | NORTH 22ND/SW 12TH AVENUE FROM SHERIDAN STREET TO STIRLING ROAD - FM# 4455261 | | | | Funding Source: FEDERAL | | | | |
| | | Type of Work: BIKE LANE/SIDEWALK | | Proposed Study: N/A | | LAP: Yes | | Yes | Yes | Yes |
| SCOPE INCLUDE THE FOLLOWING:INSTALLATION OF PEDESTRIAN LEVEL LIGHTING AT BOTH SIDES; SHARROW BIKE FACILITY SIGNAGE AND TRAVEL LANE PAVEMENT MARKINGS;RAISED INTERSECTIONS TO PROVIDE FOR CROSSWALKS, DRAINAGE, AND DETECHABLE WARNINGS.. Temporally removed from Draft Tentative Work Program FY 2022 - 2026 because of LAP transitioning and anticipating to be brought back in the Draft Tentative Work Program FY 2023-2027 | | | | | | | MTP Page # 5-30 | | MTP Timeframe: | |
| ENV | 0 | 0 | 0 | 0 | 0 | 0 | 0 | 30,000 | | |
| PE | 0 | 0 | 0 | 0 | 0 | 0 | 0 | 385,681 | | |
| CST | 0 | 0 | 0 | 0 | 0 | 0 | 0 | 1,891,942 | | |
| Total | 0 | 0 | 0 | 0 | 0 | 0 | 0 | 2,307,623 | | |

CITY: HOLLYWOOD OWNERSHIP: LOCAL Total Project Cost Estimate: 2,307,623

| | | | | | | | | | | |
|--|----------|--|----------|----------------------------|----------|--------------------------------|-----------------|------------------|----------------|------------|
| 09 2021-15 | Priority | NORTHWEST 3RD STREET FROM NORTHWEST 6TH AVENUE TO DIXIE HIGHWAY - FM# 4455271 | | | | Funding Source: FEDERAL | | | | |
| | | Type of Work: BIKE LANE/SIDEWALK | | Proposed Study: N/A | | LAP: Yes | | Yes | Yes | Yes |
| SCOPE INCLUDE THE FOLLOWING: COMPLETE STREET IMPROVEMENTS SUCH AS BIKE LANES; ON-STREET PARKING, CURB AND GUTTER,PEDESTRIAN LIGHTING AT BOTH SIDES, WIDER SIDEWALK, INCLUDE MINI ROUNDABOUT AND RAISED INTERSECTION. Temporally removed from Draft Tentative Work Program FY 2022 - 2026 because of LAP transitioning and anticipating to be brought back in the Draft Tentative Work Program FY 2023-2027 | | | | | | | MTP Page # 5-30 | | MTP Timeframe: | |
| ENV | 0 | 0 | 0 | 0 | 0 | 0 | 0 | 30,000 | | |
| PE | 0 | 0 | 0 | 0 | 0 | 0 | 0 | 421,000 | | |
| CST | 0 | 0 | 0 | 0 | 0 | 0 | 0 | 2,375,288 | | |
| Total | 0 | 0 | 0 | 0 | 0 | 0 | 0 | 2,826,288 | | |

CITY: HALLANDALE BEACH OWNERSHIP: LOCAL Total Project Cost Estimate: 2,826,288

| Phase | <2022 | 2022 | 2023 | 2024 | 2025 | 2026 | Amount Funded | Funding Needed |
|-------|-------|------|------|------|------|------|---------------|----------------|
|-------|-------|------|------|------|------|------|---------------|----------------|

| | | | | | | | | | |
|--|----------|--|-------------------------------|------------------|---------------------|----------|--------------------------------|------------------|-----------|
| 10 | Priority | CITY OF COCONUT CREEK VARIOUS LOCATIONS - FM# 4455281 | | | | | Funding Source: FEDERAL | | |
| | | 2021-16 | Type of Work: BIKE PATH/TRAIL | | Proposed Study: N/A | | LAP: Yes | Yes | Yes |
| VARIOUS LOCATIONS: JOHNSON ROAD FROM EAST OF US-441/SR-7 TO LYONS ROAD; PARK SCHOOL ROAD FROM LAKESIDE PARK TO JOHNSON ROAD 52-02: LFA WITH CITY OF COCONUT CREEKSCOPE INCLUDE THE FOLLOWING: SIDEWALK CONSTRUCTION ON THE LEFT SIDE OF JOHNSON RD. AND A MULTI-USE PATH ON THE LEFT SIDE OF PARK RD. Temporarily removed from Draft Tentative Work Program FY 2022 - 2026 because of LAP transitioning and anticipating to be brought back in the Draft Tentative Work Program FY 2023-2027 | | | | | | | | | |
| ENV | 0 | 0 | 0 | 0 | 0 | 0 | 0 | 30,000 | |
| PE | 0 | 0 | 0 | 0 | 0 | 0 | 0 | 295,000 | |
| CST | 0 | 0 | 0 | 0 | 0 | 0 | 0 | 787,881 | |
| Total | 0 | 0 | 0 | 0 | 0 | 0 | 0 | 1,112,881 | |
| CITY: COCONUT CREEK | | | | OWNERSHIP: LOCAL | | | Total Project Cost Estimate: | | 1,112,881 |

| | | | | | | | | | |
|---|----------|--|----------------------------------|------------------|---------------------|----------|--------------------------------|------------------|-----------|
| 11 | Priority | CITY OF DEERFIELD BEACH VARIOUS LOCATIONS - FM# 4455291 | | | | | Funding Source: FEDERAL | | |
| | | 2021-17 | Type of Work: BIKE LANE/SIDEWALK | | Proposed Study: N/A | | LAP: Yes | Yes | Yes |
| VARIOUS LOCATIONS: NW 45TH STREET FROM NW 18TH TERRACE TO MILITARY TRAIL; CRYSTAL LAKE DR. FROM NW 45TH STREET TO MILITARY TRAIL. SCOPE INCLUDE THE FOLLOWING: SIDEWALKS ON BOTH SIDES AND SHARROWS; PEDESTRIAN LIGHTING T BOTH SIDES; ONE ROUNDABOUT AT CRYTAL LAKE DRIVE AND NW 45 STREET. Temporarily removed from Draft Tentative Work Program FY 2022 - 2026 because of LAP transitioning and anticipating to be brought back in the Draft Tentative Work Program FY 2023-2027 | | | | | | | | | |
| ENV | 0 | 0 | 0 | 0 | 0 | 0 | 0 | 30,000 | |
| PE | 0 | 0 | 0 | 0 | 0 | 0 | 0 | 228,000 | |
| CST | 0 | 0 | 0 | 0 | 0 | 0 | 0 | 2,047,829 | |
| Total | 0 | 0 | 0 | 0 | 0 | 0 | 0 | 2,305,829 | |
| CITY: DEERFIELD BEACH | | | | OWNERSHIP: LOCAL | | | Total Project Cost Estimate: | | 2,305,829 |

| Phase | <2022 | 2022 | 2023 | 2024 | 2025 | 2026 | Amount Funded | Funding Needed |
|-------|-------|------|------|------|------|------|------------------|-------------------|
|-------|-------|------|------|------|------|------|------------------|-------------------|

| | | | | | | | | | | |
|---|----------|---|----------|----------------------------|----------|--------------------------------|-----------------|------------------|----------------|------------|
| 12 2021-18 | Priority | NORTHWEST 39TH STREET FROM CORAL RIDGE DRIVE TO NORTHWEST 110TH AVENUE - FM# 4455311 | | | | Funding Source: FEDERAL | | | | |
| | | Type of Work: BIKE LANE/SIDEWALK | | Proposed Study: N/A | | LAP: Yes | | Yes | Yes | Yes |
| SCOPE INCLUDE THE FOLLOWING: BIKE LANES AND SIDEWALK ON BOTH SIDES AND NEW VALLEY GUTTER. Temporally removed from Draft Tentative Work Program FY 2022 - 2026 because of LAP transitioning and anticipating to be brought back in the Draft Tentative Work Program FY 2023-2027 | | | | | | | MTP Page # 5-30 | | MTP Timeframe: | |
| ENV | 0 | 0 | 0 | 0 | 0 | 0 | 0 | 30,000 | | |
| PE | 0 | 0 | 0 | 0 | 0 | 0 | 0 | 280,000 | | |
| CST | 0 | 0 | 0 | 0 | 0 | 0 | 0 | 1,689,157 | | |
| Total | 0 | 0 | 0 | 0 | 0 | 0 | 0 | 1,999,157 | | |

CITY: CORAL SPRINGS OWNERSHIP: LOCAL **Total Project Cost Estimate: 1,999,157**

| | | | | | | | | | | |
|---|----------|--|----------|----------------------------|----------|--------------------------------|-----------------|------------------|----------------|------------|
| 13 2021-19 | Priority | SADDLE CLUB ROAD FROM WEST OF LAKEVIEW DRIVE TO WESTON ROAD - FM# 4455321 | | | | Funding Source: FEDERAL | | | | |
| | | Type of Work: BIKE LANE/SIDEWALK | | Proposed Study: N/A | | LAP: Yes | | Yes | Yes | Yes |
| SCOPE INCLUDE THE FOLLOWING: ADDITIONAL BIKELANES AT BOTH SIDES AND LANE WIDTH REDUCTION. Temporally removed from Draft Tentative Work Program FY 2022 - 2026 because of LAP transitioning and anticipating to be brought back in the Draft Tentative Work Program FY 2023-2027 | | | | | | | MTP Page # 5-30 | | MTP Timeframe: | |
| ENV | 0 | 0 | 0 | 0 | 0 | 0 | 0 | 30,000 | | |
| PE | 0 | 0 | 0 | 0 | 0 | 0 | 0 | 384,000 | | |
| CST | 0 | 0 | 0 | 0 | 0 | 0 | 0 | 2,013,173 | | |
| Total | 0 | 0 | 0 | 0 | 0 | 0 | 0 | 2,427,173 | | |

CITY: WESTON OWNERSHIP: LOCAL **Total Project Cost Estimate: 2,427,173**

| | | | | | | | | | | |
|--|----------|--|----------|----------------------------|----------|--------------------------------|-----------------|------------------|----------------|------------|
| 14 2021-20 | Priority | NORTHWEST 94TH AVENUE FROM NORTHWEST 44TH STREET TO 57TH STREET - FM# 4455331 | | | | Funding Source: FEDERAL | | | | |
| | | Type of Work: BIKE LANE/SIDEWALK | | Proposed Study: N/A | | LAP: Yes | | Yes | Yes | Yes |
| SCOPE INCLUDE THE FOLLOWING: PRESERVEINSIDE TRAVEL LANE AND LEFT TURN LANE; RE-STRIPE OUTSIDE TRAVEL LANE TO BE A 6FT BIKE LANE WITH 3 FT BUTTER; LANE ELIMINATION;PROVIDE 500LF OF ROAD WIDENING; MILL AND RESURFACE. Temporally removed from Draft Tentative Work Program FY 2022 - 2026 because of LAP transitioning and anticipating to be brought back in the Draft Tentative Work Program FY 2023-2027 | | | | | | | MTP Page # 5-30 | | MTP Timeframe: | |
| ENV | 0 | 0 | 0 | 0 | 0 | 0 | 0 | 30,000 | | |
| PE | 0 | 0 | 0 | 0 | 0 | 0 | 0 | 203,000 | | |
| CST | 0 | 0 | 0 | 0 | 0 | 0 | 0 | 1,043,290 | | |
| Total | 0 | 0 | 0 | 0 | 0 | 0 | 0 | 1,276,290 | | |

CITY: SUNRISE OWNERSHIP: LOCAL **Total Project Cost Estimate: 1,276,290**

| | | |
|-----------------------|-------------------------|-------------------------|
| State Funds | Federal Funds | Local Funds |
| State and Local Funds | State and Federal Funds | Federal and Local Funds |

| Phase | <2022 | 2022 | 2023 | 2024 | 2025 | 2026 | Amount Funded | Funding Needed | | |
|--|---|----------|---------------------|----------|----------|-------------------|--------------------------------|--|-----|-----|
| 15 | CITY OF HOLLYWOOD - VARIOUS LOCATIONS - FM# 4455341 | | | | | | Funding Source: FEDERAL | | | |
| 2021-21 | Type of Work: SIDEWALK | | Proposed Study: N/A | | LAP: Yes | | Yes | Yes | Yes | Yes |
| SR7 SHERIDAN PARK AND HWY ACRES SIDEWALKPROJECT; PROVIDE SIDEWALK CONNECTIVITY AT APPROX. 24 LOCATIONS. Temporally removed from Draft Tentative Work Program FY 2022 - 2026 because of LAP transitioning and anticipating to be brought back in the Draft Tentative Work Program FY 2023-2027 | | | | | | | | | | |
| ENV | 0 | 0 | 0 | 0 | 0 | 0 | 0 | 30,000 | | |
| PE | 0 | 0 | 0 | 0 | 0 | 0 | 0 | 273,000 | | |
| CST | 0 | 0 | 0 | 0 | 0 | 0 | 0 | 1,457,378 | | |
| Total | 0 | 0 | 0 | 0 | 0 | 0 | 0 | 1,760,378 | | |
| CITY: HOLLYWOOD | | | | | | OWNERSHIP: LOCAL | | Total Project Cost Estimate: 1,760,378 | | |
| 16 | SHERMAN CIRCLE FROM JODI LANE TO JODI LANE - FM# 4455351 | | | | | | Funding Source: FEDERAL | | | |
| 2021-22 | Type of Work: BIKE PATH/TRAIL | | Proposed Study: N/A | | LAP: Yes | | Yes | Yes | Yes | Yes |
| SHERMAN CIRCLE BEGIN AND END AT THE SAME POINT.SCOPE INCLUDE THE FOLLOWING: 10FT WIDE MULTI-USE PATH ON THE INNER SIDE OF THE CIRCLE; WIDENING OFF EXISTING SIDEWALK;PEDESTRIAN LIGHTING Temporally removed from Draft Tentative Work Program FY 2022 - 2026 because of LAP transitioning and anticipating to be brought back in the Draft Tentative Work Program FY 2023-2027 | | | | | | | | | | |
| ENV | 0 | 0 | 0 | 0 | 0 | 0 | 0 | 30,000 | | |
| PE | 0 | 0 | 0 | 0 | 0 | 0 | 0 | 343,000 | | |
| CST | 0 | 0 | 0 | 0 | 0 | 0 | 0 | 1,802,113 | | |
| Total | 0 | 0 | 0 | 0 | 0 | 0 | 0 | 2,175,113 | | |
| CITY: MIRAMAR | | | | | | OWNERSHIP: LOCAL | | Total Project Cost Estimate: 2,175,113 | | |
| 17 | NW 21st Avenue from NW 26th Street to Commercial Boulevard - FM# 4481061 | | | | | | Funding Source: FEDERAL | | | |
| 2021-23 | Type of Work: Bike Lanes, Sidewalk, Traffic Calming | | Proposed Study: N/A | | LAP: Yes | | Yes | Yes | Yes | Yes |
| Cycle 4. Remove bidirectional turn lanes, install landscape medians, install irrigation sleeves, mill and resurface, new striping and associated signage, and apply green surface treatment to bike lanes. | | | | | | | | | | |
| PE,ENV, CEI,CST | 0 | 0 | 0 | 0 | 0 | 0 | 0 | 2,249,521 | | |
| Total | 0 | 0 | 0 | 0 | 0 | 0 | 0 | 2,249,521 | | |
| CITY: OAKLAND PARK | | | | | | OWNERSHIP: COUNTY | | Total Project Cost Estimate: 2,249,521 | | |

| Phase | <2022 | 2022 | 2023 | 2024 | 2025 | 2026 | Amount Funded | Funding Needed | | |
|--|---|----------|----------------------------|-------------------------|-----------------|-------------------------------------|--------------------------------|------------------|----------------|------------|
| 18 | SW 52nd Avenue from West Hallandale Beach Boulevard to County Line and South Park Road from West Hallandale Beach Boulevard to Pembroke Road - FM# 4482871 | | | | | | Funding Source: FEDERAL | | | |
| 2021-24 | Type of Work: Bike Lanes, Sidewalk, Resurfacing | | Proposed Study: N/A | | LAP: Yes | | Yes | Yes | Yes | Yes |
| Cycle 4. New bike paths located along the east and west sides of SW 52nd Avenue and on the east side of S. Park Road, construction of missing sections of sidewalks, drainage adjustment for lost swale areas, and resurfacing to adjust road grades. | | | | | | | MTP Page # 5-30 | | MTP Timeframe: | |
| PE,ENV, CEI,CST | 0 | 0 | 0 | 0 | 0 | 0 | 0 | 3,164,242 | | |
| Total | 0 | 0 | 0 | 0 | 0 | 0 | 0 | 3,164,242 | | |
| CITY: PEMBROKE PARK | | | | OWNERSHIP: LOCAL | | Total Project Cost Estimate: | | 3,164,242 | | |
| 19 | City-wide Sidewalk and ADA - FM# 4482881 | | | | | | Funding Source: FEDERAL | | | |
| 2021-25 | Type of Work: Pedestrian Facilities | | Proposed Study: N/A | | LAP: Yes | | Yes | Yes | Yes | Yes |
| Cycle 4. Indian Trace(north) from Town Center Blvd to Bonaventure Blvd, Royal Palm Blvd(south) from Weston Hills Dr to Town Center Blvd, Weston Rd(west) from Indian Trace to Royal Palm Blvd, and South Post Rd(north) from Bonaventure Blvd to west of Enterprise Ave. Construction of ADA pedestrian facilities at multiple locations throughout the City of Weston to improve pedestrian connectivity, safety and accessibility to existing transit stops. | | | | | | | MTP Page # 5-30 | | MTP Timeframe: | |
| PE,ENV, CEI,CST | 0 | 0 | 0 | 0 | 0 | 0 | 0 | 4,759,236 | | |
| Total | 0 | 0 | 0 | 0 | 0 | 0 | 0 | 4,759,236 | | |
| CITY: WESTON | | | | OWNERSHIP: LOCAL | | Total Project Cost Estimate: | | 4,759,236 | | |
| 20 | SW 81ST AVE from C-14 Greenway South to McNab Road - FM# 4482891 | | | | | | Funding Source: FEDERAL | | | |
| 2021-26 | Type of Work: Bike/Ped Facilities | | Proposed Study: N/A | | LAP: Yes | | Yes | Yes | Yes | Yes |
| Cycle 4. Multiuse path along S.W. 81st Avenue from McNab Road to north of Southgate Boulevard to accommodate pedestrian and bicyclist to connect with the existing C-14 Greenway. | | | | | | | MTP Page # 5-30 | | MTP Timeframe: | |
| PE,ENV, CEI,CST | 0 | 0 | 0 | 0 | 0 | 0 | 0 | 2,593,606 | | |
| Total | 0 | 0 | 0 | 0 | 0 | 0 | 0 | 2,593,606 | | |
| CITY: NORTH LAUDERDALE | | | | OWNERSHIP: LOCAL | | Total Project Cost Estimate: | | 2,593,606 | | |

| Phase | <2022 | 2022 | 2023 | 2024 | 2025 | 2026 | Amount Funded | Funding Needed | | |
|---|--|----------|---------------------|----------|----------|------------------------------|--------------------------------|-------------------|----------------|-----|
| 21 Priority | Honey Hill RD from Flamingo Road to Red Road - FM# 4482901 | | | | | | Funding Source: FEDERAL | | | |
| 2021-27 | Type of Work: Bike/Ped Facilities | | Proposed Study: N/A | | LAP: Yes | | Yes | Yes | Yes | Yes |
| Cycle 4. Construct 8-foot wide shared asphalt path for bicycles and pedestrians and pedestrian lighting between Flamingo Road and Red Road. Miramar will have to construct the "Mobility Hub" portion of the project as a separate project if funded. | | | | | | | MTP Page # 5-30 | | MTP Timeframe: | |
| PE,ENV, CEI,CST | 0 | 0 | 0 | 0 | 0 | 0 | 0 | 1,190,776 | | |
| Total | 0 | 0 | 0 | 0 | 0 | 0 | 0 | 1,190,776 | | |
| CITY: MIRAMAR | | | OWNERSHIP: LOCAL | | | Total Project Cost Estimate: | | 1,190,776 | | |
| 22 Priority | City-Wide Sidewalk Improvements in the City of Lauderdale Lakes - FM# | | | | | | Funding Source: FEDERAL | | | |
| 2021-New | Type of Work: ADA, Sidewalk | | Proposed Study: N/A | | LAP: Yes | | Yes | Yes | Yes | Yes |
| Cycle 5. Construction of ADA compliant new sidewalks at NW 52 Av from Oakland Park Blvd to NW 36 St; NW 43 Ct. from NW 41 St to NW 48 Ave; NW 21 St. from SR-7 to Willie Webb Park; NW 29 St. and NW 33 Ave at various locations; NW 37 St at various locations; NW 24 Ct at various locations. Project Sponsor: Lauderdale Lakes | | | | | | | MTP Page # 5-30 | | MTP Timeframe: | |
| PE,ENV, CEI,CST | 0 | 0 | 0 | 0 | 0 | 0 | 0 | 1,067,414 | | |
| Total | 0 | 0 | 0 | 0 | 0 | 0 | 0 | 1,067,414 | | |
| CITY: LAUDERDALE LAKES | | | OWNERSHIP: LOCAL | | | Total Project Cost Estimate: | | 1,067,414 | | |
| 23 Priority | Various Locations in Hollywood's Gracewood Neighborhood - FM# | | | | | | Funding Source: FEDERAL | | | |
| 2021-New | Type of Work: ADA, Drainage, Sidewalk | | Proposed Study: N/A | | LAP: Yes | | Yes | Yes | Yes | Yes |
| Cycle 5. Construct new 5'-0" wide concrete sidewalk with curb ramps to fill-in and connect to existing sidewalks within the Gracewood neighborhood. Proposed sidewalks will be installed at various location within the boundaries of Johnson St to the North, Hollywood Blvd to the South, SR7 to the East, and N 64th Ave to the West. Project Sponsor: Hollywood | | | | | | | MTP Page # 5-30 | | MTP Timeframe: | |
| PE,ENV, CEI,CST | 0 | 0 | 0 | 0 | 0 | 0 | 0 | 2,385,674 | | |
| Total | 0 | 0 | 0 | 0 | 0 | 0 | 0 | 2,385,674 | | |
| CITY: HOLLYWOOD | | | OWNERSHIP: LOCAL | | | Total Project Cost Estimate: | | 2,385,674 | | |

| Phase | <2022 | 2022 | 2023 | 2024 | 2025 | 2026 | Amount Funded | Funding Needed | | |
|--|--|----------|---------------------|------------------|----------|------------------------------|--------------------------------|-------------------|----------------|-----|
| 24 Priority 2021-New | Cypress Road, Gatehouse Road, and New River Canal Sidewalks - FM# | | | | | | Funding Source: FEDERAL | | | |
| | Type of Work: Sidewalk | | Proposed Study: N/A | | LAP: Yes | | Yes | Yes | Yes | Yes |
| Cycle 5. Construct sidewalks at Cypress Road from the Holloway Canal to N. Fig Tree Lane, Gatehouse Road from Cocoplum to Pine Island Road New Rive Canal Road, and New River Canal Road from Pine Island to the 9000 block of Mockingbird Lane. Project Sponsor: Plantation | | | | | | | MTP Page # 5-30 | | MTP Timeframe: | |
| PE,ENV, CEI,CST | 0 | 0 | 0 | 0 | 0 | 0 | 0 | 1,046,943 | | |
| Total | 0 | 0 | 0 | 0 | 0 | 0 | 0 | 1,046,943 | | |
| CITY: PLANTATION | | | | OWNERSHIP: LOCAL | | Total Project Cost Estimate: | | 1,046,943 | | |
| 25 Priority 2021-New | NE 12th Terr Roadway Improvement Project - FM# | | | | | | Funding Source: FEDERAL | | | |
| | Type of Work: ADA, Bicycle Lanes, Drainage, Landscape, Lighting | | Proposed Study: N/A | | LAP: Yes | | Yes | Yes | Yes | Yes |
| Cycle 5. Construct pedestrian facilities as well widening for the installation of bicycle facilities along NE 12th Terrace from Floranada Road to NE 40th Place and Oakland Park Boulevard to City Limits/Middle River. Project Sponsor: Oakland Park | | | | | | | MTP Page # 5-30 | | MTP Timeframe: | |
| PE,ENV, CEI,CST | 0 | 0 | 0 | 0 | 0 | 0 | 0 | 1,905,282 | | |
| Total | 0 | 0 | 0 | 0 | 0 | 0 | 0 | 1,905,282 | | |
| CITY: OAKLAND PARK | | | | OWNERSHIP: LOCAL | | Total Project Cost Estimate: | | 1,905,282 | | |
| 26 Priority 2021-New | NE 15th Avenue Complete Streets Project - FM# | | | | | | Funding Source: FEDERAL | | | |
| | Type of Work: Access Management, ADA, Bicycle Lanes, Crosswalk, | | Proposed Study: N/A | | LAP: Yes | | Yes | Yes | Yes | Yes |
| Cycle 5. Construct bike lanes, new and enhanced crosswalks, new and extended medians, raised intersections, and turning movement organization along NE 15th Avenue from Sunrise Boulevard to City Limits/Middle River Project Sponsor: Fort Lauderdale | | | | | | | MTP Page # 5-30 | | MTP Timeframe: | |
| PE,ENV, CEI,CST | 0 | 0 | 0 | 0 | 0 | 0 | 0 | 1,655,043 | | |
| Total | 0 | 0 | 0 | 0 | 0 | 0 | 0 | 1,655,043 | | |
| CITY: FORT LAUDERDALE | | | | OWNERSHIP: LOCAL | | Total Project Cost Estimate: | | 1,655,043 | | |

| Phase | <2022 | 2022 | 2023 | 2024 | 2025 | 2026 | Amount Funded | Funding Needed | |
|-----------------------|--|----------|----------|----------|----------|------------------|--|--|--|
| 27 2021-New | Security Cameras at Broward Tri-Rail Stations - FM# | | | | | | Funding Source: FEDERAL | | |
| Priority | Type of Work: Information Management | | | | | | Proposed Study: N/A | | |
| | | | | | | | LAP: No | | |
| | | | | | | | Yes Yes Yes Yes | | |
| | Cycle 5. Install safety & security camera technology in Tri-Rail station facilities to respond quickly to threats, protect passengers, facilities, SIS infrastructure, & improve disaster planning and recovery. Improvements will take place at all Broward Tri-Rail Stations: Hollywood, Sheridan St., FLL Airport/Dania Beach, Ft Lauderdale, Cypress Creek, Pompano Beach, and Deerfield Beach Project | | | | | | MTP Page # 5-30 | | |
| | Sponsor: SFRTA | | | | | | MTP Timeframe: | | |
| PE,ENV, CEI,CST | 0 | 0 | 0 | 0 | 0 | 0 | 0 | 794,283 | |
| Total | 0 | 0 | 0 | 0 | 0 | 0 | 0 | 794,283 | |
| CITY: SFRTA | | | | | | OWNERSHIP: STATE | | Total Project Cost Estimate: 794,283 | |
| 28 2021-New | City-Wide Bus Shelters - FM# | | | | | | Funding Source: FEDERAL | | |
| Priority | Type of Work: ADA, Bicycle Rack, Bus Shelter | | | | | | Proposed Study: N/A | | |
| | | | | | | | LAP: Yes | | |
| | | | | | | | Yes Yes Yes Yes | | |
| | Cycle 5. Renovate the following 10 bus shelters: Stop ID 4050, 2068, 3595, 5049, 5655, 2742, 5260, 5257, 5654, 2740. Project | | | | | | MTP Page # 5-30 | | |
| | Sponsor: Sunrise | | | | | | MTP Timeframe: | | |
| PE,ENV, CEI,CST | 0 | 0 | 0 | 0 | 0 | 0 | 0 | 1,397,979 | |
| Total | 0 | 0 | 0 | 0 | 0 | 0 | 0 | 1,397,979 | |
| CITY: SUNRISE | | | | | | OWNERSHIP: LOCAL | | Total Project Cost Estimate: 1,397,979 | |
| 29 2021-New | Miramar Pkwy Complete Streets Phase 1 - FM# | | | | | | Funding Source: FEDERAL | | |
| Priority | Type of Work: Bicycle Lanes | | | | | | Proposed Study: N/A | | |
| | | | | | | | LAP: Yes | | |
| | | | | | | | Yes Yes Yes Yes | | |
| | Cycle 5. Construction of (7) foot buffered bike lanes on both sides with new asphalt and striping along Miramar Parkway between | | | | | | MTP Page # 5-30 | | |
| | Flamingo Road and Red Road. Project Sponsor: Miramar | | | | | | MTP Timeframe: | | |
| PE,ENV, CEI,CST | 0 | 0 | 0 | 0 | 0 | 0 | 0 | 1,777,917 | |
| Total | 0 | 0 | 0 | 0 | 0 | 0 | 0 | 1,777,917 | |
| CITY: MIRAMAR | | | | | | OWNERSHIP: LOCAL | | Total Project Cost Estimate: 1,777,917 | |

| Phase | <2022 | 2022 | 2023 | 2024 | 2025 | 2026 | Amount Funded | Funding Needed | | |
|--|---|----------|---------------------|------------------|----------|----------|------------------------------|-------------------|----------------|-----|
| 30 | Trailhead Linear Park Extension / SR-845 - FM# | | | | | | Funding Source: STATE | | | |
| 2021-New | Type of Work: Crosswalk, Lighting pedestrian, MultiUse Path | | Proposed Study: N/A | | LAP: No | | Yes | Yes | Yes | Yes |
| Cycle 5. Construction of wide shared-use path and pedestrian lighting upgrades on Powerline Road from Trail Head Linear Park to the Entrance of Quiet Waters Park at West Drive Project Sponsor: Deerfield Beach | | | | | | | MTP Page # 5-30 | | MTP Timeframe: | |
| PE,ENV, CEI,CST | 0 | 0 | 0 | 0 | 0 | 0 | 0 | 3,200,185 | | |
| Total | 0 | 0 | 0 | 0 | 0 | 0 | 0 | 3,200,185 | | |
| CITY: DEERFIELD BEACH | | | | OWNERSHIP: STATE | | | Total Project Cost Estimate: | | 3,200,185 | |

CSMP

COMPLETE STREETS MASTER PLAN

PROGRAM



LEGEND:

 PRIORITIZED CSMP PROJECTS



| Phase | <2022 | 2022 | 2023 | 2024 | 2025 | 2026 | Amount Funded | Funding Needed | |
|--|--|------------------|---------------------|-------------------------|----------|------------------------------|--|-------------------|--|
| 01 | SR-817/UNIVERSITY DRIVE FR S. OF SR-848/STIRLING RD TO N. OF SW 36 ST - FM# 4435972 | | | | | | Funding Source: STATE | | |
| 2021-01 | Type of Work: BIKE LANES/SIDEWALK | | Proposed Study: N/A | | LAP: No | | Yes Yes Yes Yes | | |
| 2021 MPO CSMP PRIORITY #1 TOWN OF DAVIE BASED ON FEASIBILITY STUDY DONE UNDER 432066-3 | | | | | | | MTP Page # 5-3 | MTP Timeframe: | |
| P.E. | 0 | 1,119,780 | 0 | 0 | 0 | 0 | 1,119,780 | 0 | |
| CST | 0 | 0 | 0 | 0 | 0 | 0 | 0 | 9,069,854 | |
| Total | 0 | 1,119,780 | 0 | 0 | 0 | 0 | 1,119,780 | 9,069,854 | |
| CITY: DAVIE | | | | OWNERSHIP: STATE | | Total Project Cost Estimate: | | 10,189,634 | |
| 02 | SR-7/US-441 TRANSIT CORRIDOR IMPROVEMENTS GROUP/PRIORITY 7 - FM# 4295767 | | | | | | Funding Source: FEDERAL | | |
| 2021-02 | Type of Work: BIKE LANES/SIDEWALK | | Proposed Study: N/A | | LAP: No | | Yes N/A Yes Yes | | |
| 2020 MPO CSMP PRIORITY #5 SR-7/US-441, TRANSIT CORRIDOR. OFF-SYSTEM ROADWAYS IMPROVEMENTS BASED ON SR-7 MULTIMODALIMPROVEMENTS CORRIDOR STUDY UNDER 429576-1. NW 26TH ST FROM NW 47TH AVE TO SR-7; NW 19TH ST FROM NW 49TH AVE TO SR-7;NW16TH ST FROM NW 47TH AVE TO SR-7. NW 26TH ST, MP 0 TO .595 CONSTRUCT BIKE LANES AND NARROW LANES SIDEWALK FILL IN GAPS. NW 19THST, MP 0 TO .204 CONSTRUCT SPARROWS AND WIDEN SIDEWALK AND FILL IN GAPS. NW 19TH ST, MP 0 TO .588 CONSTRUCT BIKE LANES ANDNARROW LANES,NW 16TH ST, MP 0 TO .580 CONSTRUCT BIKE LANES AND NARROW LANES. *Allocate \$4,080,130 of CARES funds to FY 2024 for Construction. | | | | | | | MTP Page # 5-3 | MTP Timeframe: | |
| ENV | 0 | 30,000 | 0 | 0 | 0 | 0 | 30,000 | 0 | |
| P.E. | 692,309 | 50,657 | 0 | 0 | 0 | 0 | 742,966 | 0 | |
| CST-CARES* | 0 | 0 | 0 | 0 | 0 | 0 | 0 | 4,080,130 | |
| Total | 692,309 | 80,657 | 0 | 0 | 0 | 0 | 772,966 | 4,080,130 | |
| CITY: LAUDERDALE LAKES/LAUDERHILL | | | | OWNERSHIP: COUNTY/LOCAL | | Total Project Cost Estimate: | | 4,853,096 | |

| Phase | <2022 | 2022 | 2023 | 2024 | 2025 | 2026 | Amount Funded | Funding Needed |
|-------|-------|------|------|------|------|------|------------------|-------------------|
|-------|-------|------|------|------|------|------|------------------|-------------------|

| | | | | | | | | |
|---|---|---------------|-------------------------|----------|----------|------------------------------|--|------------------|
| 03 | SR-7/US-441 TRANSIT CORRIDOR IMPROVEMENTS GROUP/PRIORITY 8 - FM# 4295768 | | | | | | Funding Source: FEDERAL | |
| 2021-03 | Type of Work: BIKE LANES/SIDEWALK | | Proposed Study: N/A | | LAP: No | | Yes Yes Yes Yes | |
| 2020 MPO CSMP PRIORITY #6 SR-7/US-441, TRANSIT CORRIDOR. OFF-SYSTEM ROADWAYS IMPROVEMENTS BASED ON SR-7 MULTIMODAL IMPROVEMENTS CORRIDOR STUDY UNDER 429576-1. SW 25TH ST FROM SW 64TH TO SR-7; SW 25TH ST FROM SW 62ND TO SW 40TH AVE; SW 33RD ST FROM 62ND TO SR-7. SW 33RD ST, MP.794 TO 1.046 CONSTRUCT SIDEWALK ON NORTH SIDE OF ROAD; SW 25TH ST, MP .497 TO 1.003 CONSTRUCT SIDEWALK ON SOUTH SIDE OF ROAD; SW 25TH ST, MP .754 TO 1.003 CONSTRUCT BIKE LANES BY WIDENING TO THE OUTSIDE; SW 25TH ST (EAST OF SR7), MP 0 TO 1.464 CONSTRUCT BIKE LANES BY WIDENING TO THE OUTSIDE. *Allocate \$3,715,051 of CARES funds to FY 2024 for Construction. | | | | | | | | |
| ENV | 0 | 20,000 | 0 | 0 | 0 | 0 | 20,000 | 0 |
| P.E. | 649,868 | 47,551 | 0 | 0 | 0 | 0 | 697,419 | 0 |
| CST-CARES* | 0 | 0 | 0 | 0 | 0 | 0 | 0 | 3,715,051 |
| Total | 649,868 | 67,551 | 0 | 0 | 0 | 0 | 717,419 | 3,715,051 |
| CITY: MIRAMAR/WEST PARK | | | OWNERSHIP: COUNTY/LOCAL | | | Total Project Cost Estimate: | | 4,432,470 |

| | | | | | | | | |
|---|---|----------|---------------------|---------------|----------|------------------------------|--|------------------|
| 04 | SR-7/US-441 TRANSIT CORRIDOR IMPROVEMENTS GROUP/PRIORITY 9 - FM# 4295769 | | | | | | Funding Source: STATE AND FEDERAL | |
| 2021-04 | Type of Work: BIKE LANES/SIDEWALK | | Proposed Study: N/A | | LAP: No | | Yes N/A Yes Yes | |
| 2021 MPO CSMP PRIORITY #4 SR-7/US-441, TRANSIT CORRIDOR. OFF-SYSTEM ROADWAYS IMPROVEMENTS BASED ON SR-7 MULTIMODAL IMPROVEMENTS CORRIDOR STUDY UNDER 429576-1 TAFT ST. FROM SR-7 TO 40TH AVE. & SW 45TH ST. FROM TURNPIKE TO SR-7 | | | | | | | | |
| ENV | 0 | 0 | 0 | 30,000 | 0 | 0 | 30,000 | 0 |
| P.E. | 0 | 0 | 449,542 | 32,893 | 0 | 0 | 482,435 | 0 |
| CST | 0 | 0 | 0 | 0 | 0 | 0 | 0 | 1,960,593 |
| Total | 0 | 0 | 449,542 | 62,893 | 0 | 0 | 512,435 | 1,960,593 |
| CITY: DAVIE/HOLLYWOOD | | | OWNERSHIP: LOCAL | | | Total Project Cost Estimate: | | 2,473,028 |

| | | | | | | | | |
|--|---|----------|---------------------|----------|----------|------------------------------|--|------------------|
| 05 | SAMPLE RD FROM BLOUNT RD TO NE 3 AVE - FM# | | | | | | Funding Source: STATE | |
| 2021-06 | Type of Work: BIKE LANES/SIDEWALK | | Proposed Study: N/A | | LAP: No | | Yes Yes Yes Yes | |
| BUFFERED BICYCLE LANES, WIDER PEDESTRIAN ZONE (SIDEWALKS), PEDESTRIAN LEVEL LIGHTING. FEASIBILITY STUDY IS INCLUDED IN THE PROJECT FM # 446377.1 | | | | | | | | |
| PE | 0 | 0 | 0 | 0 | 0 | 0 | 0 | 500,000 |
| CST | 0 | 0 | 0 | 0 | 0 | 0 | 0 | 3,800,000 |
| Total | 0 | 0 | 0 | 0 | 0 | 0 | 0 | 4,300,000 |
| CITY: DEERFIELD BEACH/POMPANO BEACH | | | OWNERSHIP: STATE | | | Total Project Cost Estimate: | | 4,300,000 |

| | | |
|-----------------------|-------------------------|-------------------------|
| State Funds | Federal Funds | Local Funds |
| State and Local Funds | State and Federal Funds | Federal and Local Funds |

| Phase | <2022 | 2022 | 2023 | 2024 | 2025 | 2026 | Amount Funded | Funding Needed | | |
|--|---|----------|----------------------------|--------------------------|-----------------|-------------------------------------|--------------------------------|------------------|----------------|------------|
| 06 | NW 31 AVE FROM SUNRISE BLVD TO NW 44 ST - FM# | | | | | | Funding Source: FEDERAL | | | |
| 2021-07 | Type of Work: BIKE LANES/SIDEWALK | | Proposed Study: N/A | | LAP: yes | | No | No | Yes | Yes |
| ADD BICYCLE LANES, SEPARATED BICYCLE LANES AND CONTINUOUS FURNISHING ZONES COULD BE PROVIDED THRU LANE ELIMINATION, PEDESTRIAN LIGHTING | | | | | | | MTP Page # 5-30 | | MTP Timeframe: | |
| PE | 0 | 0 | 0 | 0 | 0 | 0 | 0 | 650,000 | | |
| CST | 0 | 0 | 0 | 0 | 0 | 0 | 0 | 6,000,000 | | |
| Total | 0 | 0 | 0 | 0 | 0 | 0 | 0 | 6,650,000 | | |
| CITY: LAUDERDALE LAKES/LAUDERHILL | | | | OWNERSHIP: COUNTY | | Total Project Cost Estimate: | | 6,650,000 | | |
| 07 | DIXIE HWY FROM SAMPLE RD TO BROWARD/PALM BEACH COUNTY LINE - FM# | | | | | | Funding Source: STATE | | | |
| 2021-08 | Type of Work: BIKE LANES/SIDEWALK | | Proposed Study: N/A | | LAP: No | | Yes | Yes | Yes | Yes |
| FILL IN PEDESTRIAN ZONE (SIDEWALK GAP) ON EAST SIDE FROM NE 54 ST TO ATLANTIC BLVD, FURNISHING ZONE, BUFFERED BICYCLE LANES, PEDESTRIAN LEVEL LIGHTING, STAMP CONCRETE INTERSECTIONS, TRANSIT SHELTERS, OPPORTUNITIES FOR LANDSCAPING, REFUGE ISLANDS, TRAFFIC CALMING. FEASIBILITY STUDY IS INCLUDED IN THE PROJECT FM # 446377.1 | | | | | | | MTP Page # 5-30 | | MTP Timeframe: | |
| PE | 0 | 0 | 0 | 0 | 0 | 0 | 0 | 840,000 | | |
| CST | 0 | 0 | 0 | 0 | 0 | 0 | 0 | 6,700,000 | | |
| Total | 0 | 0 | 0 | 0 | 0 | 0 | 0 | 7,540,000 | | |
| CITY: DEERFIELD BEACH/POMPANO BEACH | | | | OWNERSHIP: STATE | | Total Project Cost Estimate: | | 7,540,000 | | |
| 08 | OAKLAND PARK BLVD FROM HIATUS GREENWAY TO UNIVERSITY DR - FM# | | | | | | Funding Source: FEDERAL | | | |
| 2021-09 | Type of Work: BIKE LANES/SIDEWALK | | Proposed Study: N/A | | LAP: yes | | Yes | No | Yes | Yes |
| BUFFERED/PROTECTED BICYCLE LANES, WIDER PEDESTRIAN ZONE (SIDEWALKS), ADDITIONAL LIGHTING, MULTI-USE PATH ON SOUTH SIDE, TRANSIT SHELTERS, C-13 CANAL 10' TRAIL. FDOT recommends administering as LAP. | | | | | | | MTP Page # 5-30 | | MTP Timeframe: | |
| PE | 0 | 0 | 0 | 0 | 0 | 0 | 0 | 800,000 | | |
| CST | 0 | 0 | 0 | 0 | 0 | 0 | 0 | 6,300,000 | | |
| Total | 0 | 0 | 0 | 0 | 0 | 0 | 0 | 7,100,000 | | |
| CITY: SUNRISE | | | | OWNERSHIP: COUNTY | | Total Project Cost Estimate: | | 7,100,000 | | |

| Phase | <2022 | 2022 | 2023 | 2024 | 2025 | 2026 | Amount Funded | Funding Needed | | |
|--|---|----------|---------------------|------------------|----------|------------------------------|--------------------------------|-------------------|-----|-----|
| 09 Priority | SHERIDAN ST FROM DOUGLAS RD TO UNIVERSITY DR - FM# | | | | | | Funding Source: FEDERAL | | | |
| 2021-10 | Type of Work: BIKE LANES/SIDEWALK | | Proposed Study: N/A | | LAP: yes | | Yes | No | Yes | Yes |
| CONTINUOUS PEDESTRIAN ZONE (SIDEWALK GAPS) ON SOUTH SIDE, BUFFERED BICYCLE LANES, MULTIUSE PATH IN THE NORTH SIDE. FDOT recommends administering as LAP. | | | | | | | MTP Page # 5-30 | MTP Timeframe: | | |
| PE | 0 | 0 | 0 | 0 | 0 | 0 | 0 | 600,000 | | |
| CST | 0 | 0 | 0 | 0 | 0 | 0 | 0 | 4,700,000 | | |
| Total | 0 | 0 | 0 | 0 | 0 | 0 | 0 | 5,300,000 | | |
| CITY: COOPER CITY | | | | OWNERSHIP: LOCAL | | Total Project Cost Estimate: | | 5,300,000 | | |
| 10 Priority | PEMBROKE RD FROM SW 145 AVE TO FLAMINGO RD - FM# | | | | | | Funding Source: FEDERAL | | | |
| 2021-11 | Type of Work: BIKE LANES/SIDEWALK | | Proposed Study: N/A | | LAP: yes | | Yes | Yes | Yes | Yes |
| PROTECTED BICYCLE LANES, WIDER PEDESTRIAN ZONE (SIDEWALKS), FURNISHING ZONE. FDOT recommends administering as LAP. | | | | | | | MTP Page # 5-30 | MTP Timeframe: | | |
| PE | 0 | 0 | 0 | 0 | 0 | 0 | 0 | 500,000 | | |
| CST | 0 | 0 | 0 | 0 | 0 | 0 | 0 | 3,600,000 | | |
| Total | 0 | 0 | 0 | 0 | 0 | 0 | 0 | 4,100,000 | | |
| CITY: MIRAMAR/PEMBROKE PINES | | | | OWNERSHIP: LOCAL | | Total Project Cost Estimate: | | 4,100,000 | | |
| 11 Priority | MIRAMAR PKWY FROM SW 172 AVE TO DYKES RD - FM# | | | | | | Funding Source: FEDERAL | | | |
| 2021-12 | Type of Work: BIKE LANES/SIDEWALK | | Proposed Study: N/A | | LAP: yes | | Yes | Yes | Yes | Yes |
| SEPARATED BICYCLE LANES, FURNISHING ZONE, MID BLOCK CROSSWALKS AT BUS STOPS. FDOT recommends administering as LAP. | | | | | | | MTP Page # 5-30 | MTP Timeframe: | | |
| PE | 0 | 0 | 0 | 0 | 0 | 0 | 0 | 500,000 | | |
| CST | 0 | 0 | 0 | 0 | 0 | 0 | 0 | 3,600,000 | | |
| Total | 0 | 0 | 0 | 0 | 0 | 0 | 0 | 4,100,000 | | |
| CITY: MIRAMAR | | | | OWNERSHIP: LOCAL | | Total Project Cost Estimate: | | 4,100,000 | | |

PROGRAM THRESHOLD

| Phase | <2022 | 2022 | 2023 | 2024 | 2025 | 2026 | Amount Funded | Funding Needed | | |
|--|---|----------|-----------------------------|----------|----------|--|--------------------------------|-------------------|----------------|-----|
| 12 Priority | OAKLAND PARK BLVD*** FROM UNIVERSITY DR TO ROCK ISLAND ROAD*** - FM# | | | | | | Funding Source: STATE | | | |
| 2021-13 | Type of Work: BIKE LANES/SIDEWALK | | Proposed Study: N/A | | LAP: No | | Yes | Yes | Yes | Yes |
| ENHANCED BUS CORRIDOR, BUFFERED BICYCLE LANES, WIDER PEDESTRIAN ZONE (SIDEWALKS), C-13 CANAL TRAIL. The project limits is included within the project limits for FM# 444673-1 SR-816/OAKLAND PARK BLVD from SR 817/University Drive to NW 31st Avenue: Oakland Park Blvd. Intermodal Development Study to Improve the Intermodal Access along the Corridor with Dedicated Bus Lanes and Improved Access to Local Transit Services. | | | | | | | MTP Page # 5-30 | | MTP Timeframe: | |
| PE | 0 | 0 | 0 | 0 | 0 | 0 | 0 | 840,000 | | |
| CST | 0 | 0 | 0 | 0 | 0 | 0 | 0 | 6,700,000 | | |
| Total | 0 | 0 | 0 | 0 | 0 | 0 | 0 | 7,540,000 | | |
| CITY: LAUDERHILL/SUNRISE | | | OWNERSHIP: STATE | | | Total Project Cost Estimate: 7,540,000 | | | | |
| 13 Priority | PEMBROKE RD FROM FLAMINGO RD TO DOUGLAS RD - FM# | | | | | | Funding Source: FEDERAL | | | |
| 2021-14 | Type of Work: BIKE LANES/SIDEWALK | | Proposed Study: Feasibility | | LAP: yes | | Yes | Yes | Yes | Yes |
| BUFFERED BICYCLE LANES, WIDER PEDESTRIAN ZONE (SIDEWALKS), PEMBROKE PINES/HOLLYWOOD TRAIL. FDOT recommends administering as LAP. | | | | | | | MTP Page # 5-30 | | MTP Timeframe: | |
| PE | 0 | 0 | 0 | 0 | 0 | 0 | 0 | 840,000 | | |
| CST | 0 | 0 | 0 | 0 | 0 | 0 | 0 | 6,700,000 | | |
| Total | 0 | 0 | 0 | 0 | 0 | 0 | 0 | 7,540,000 | | |
| CITY: MIRAMAR/PEMBROKE PINES | | | OWNERSHIP: LOCAL | | | Total Project Cost Estimate: 7,540,000 | | | | |
| 14 Priority | SOUTHGATE BLVD FROM SW 81 AVE TO SR 7/US 441 - FM# | | | | | | Funding Source: FEDERAL | | | |
| 2021-15 | Type of Work: BIKE LANES/SIDEWALK | | Proposed Study: N/A | | LAP: yes | | Yes | No | Yes | Yes |
| SEPARATED BICYCLE LANES (W OF SW 65TH AVE), BICYCLE LANES (E OF SW 65TH AVE), BIKE BOX (SR 7), CONTINUOUS PEDESTRIAN ZONE (SIDEWALK GAPS), FURNISHING ZONE. FDOT recommends administering as LAP. | | | | | | | MTP Page # 5-30 | | MTP Timeframe: | |
| PE | 0 | 0 | 0 | 0 | 0 | 0 | 0 | 800,000 | | |
| CST | 0 | 0 | 0 | 0 | 0 | 0 | 0 | 6,600,000 | | |
| Total | 0 | 0 | 0 | 0 | 0 | 0 | 0 | 7,400,000 | | |
| CITY: MARGATE/NORTH LAUDERDALE | | | OWNERSHIP: LOCAL | | | Total Project Cost Estimate: 7,400,000 | | | | |

| Phase | <2022 | 2022 | 2023 | 2024 | 2025 | 2026 | Amount Funded | Funding Needed | |
|---|---|----------|---------------------|------------------------|------------------------------------|------------------------------|---|------------------|--|
| 15 | SE/NE 1 AVE / S/N 21 AVE/ DIXIE HWY FROM COUNTY LINE RD TO SHERIDAN ST - FM# | | | | | | Funding Source: FEDERAL | | |
| 2021-16 | Type of Work: BIKE LANES/SIDEWALK | | Proposed Study: N/A | | LAP: yes | | Yes No Yes Yes | | |
| CONTINUOUS WIDER PEDESTRIAN ZONE (SIDEWALK GAPS), GREEN COLOR BUFFERED BICYCLE LANES, FURNISHING ZONE, LANDSCAPING OPPORTUNITIES, PEDESTRIAN LEVEL LIGHTING, TRANSIT SHELTERS WITH AMENITIES, ADDITIONAL PEDESTRIAN CROSSINGS, PEDESTRIAN COUNTDOWN SIGNALS, DRAINAGE IMPROVEMENTS** | | | | | | | | | |
| PE | 0 | 0 | 0 | 0 | 0 | 0 | 0 | 900,000 | |
| CST | 0 | 0 | 0 | 0 | 0 | 0 | 0 | 7,200,000 | |
| Total | 0 | 0 | 0 | 0 | 0 | 0 | 0 | 8,100,000 | |
| CITY: HALLANDALE BEACH/HOLLYWOOD | | | | OWNERSHIP: COUNTY | | Total Project Cost Estimate: | | 8,100,000 | |
| 16 | SW/SE 17 ST FROM SW 9 AVE TO CORDOVA - FM# | | | | | | Funding Source: FEDERAL | | |
| 2021-17 | Type of Work: BIKE LANES/SIDEWALK | | Proposed Study: N/A | | LAP: Yes for segment on Local Road | | Yes No Yes Yes | | |
| CONTINUOUS PEDESTRIAN ZONE (10' MULTIUSE PATH ON SOUTH SIDE) TO SW 4TH AVE, SHARROWS FROM 4TH AVE TO 9TH AVETRANSIT SHELTERS, PEDESTRIAN LEVEL LIGHTING, CHICANES. The off-system portion SW/SE 17 ST FROM SW 9 AVE TO US-1/SR-5 to be implemented through the LAP process. The on-system portion SW/SE 17 ST FROM US-1/SR-5 TO CORDOVA RD. remains in the feasibility study FM# 4463771. | | | | | | | | | |
| PE | 0 | 0 | 0 | 0 | 0 | 0 | 0 | 300,000 | |
| CST | 0 | 0 | 0 | 0 | 0 | 0 | 0 | 2,200,000 | |
| Total | 0 | 0 | 0 | 0 | 0 | 0 | 0 | 2,500,000 | |
| CITY: FORT LAUDERDALE | | | | OWNERSHIP: STATE/LOCAL | | Total Project Cost Estimate: | | 2,500,000 | |
| 17 | ROYAL PALM BLVD FROM CORAL SPRINGS DR TO RIVERSIDE DR - FM# | | | | | | Funding Source: FEDERAL | | |
| 2021-18 | Type of Work: BIKE LANES/SIDEWALK | | Proposed Study: N/A | | LAP: yes | | Yes No Yes Yes | | |
| Buffered bike lanes, 10' multiuse path with pedestrian lighting, transit amenities, furnishing zone. | | | | | | | | | |
| PE | 0 | 0 | 0 | 0 | 0 | 0 | 0 | 500,000 | |
| CST | 0 | 0 | 0 | 0 | 0 | 0 | 0 | 4,000,000 | |
| Total | 0 | 0 | 0 | 0 | 0 | 0 | 0 | 4,500,000 | |
| CITY: CORAL SPRINGS | | | | OWNERSHIP: LOCAL | | Total Project Cost Estimate: | | 4,500,000 | |

| Phase | <2022 | 2022 | 2023 | 2024 | 2025 | 2026 | Amount Funded | Funding Needed | |
|--|--|----------|--------------------------------|----------|----------|---|--------------------------------|-------------------|--|
| 18 2021-New | Priority NW 6 St from NW 31 Ave to NE 15 Ave - FM# | | | | | | Funding Source: FEDERAL | | |
| | Type of Work: BIKE LANES/SIDEWALK | | | | | | Proposed Study: N/A | | |
| | | | | | | LAP: Yes | | | Yes No Yes Yes |
| NW 6 St from NW 31st Ave. to NW 27th Ave.: Buffered bike lanes with lane width reduction and minor widening into median (if needed), shared use/multiuse path on north side (boardwalk), transit amenities, pedestrian lighting, ADA improvements, milling and resurfacing, midblock crossing near NW 29th Terrace. NW 6 St from NW 27th Ave to US-1: Refreshed crosswalks and new crosswalks, lighting improvements, intersection improvements, signal timing improvements. NW 6 St from US-1 to NE 15th Ave.: Traffic calming/speed humps, continuous sidewalk on one side of street, widen bike lanes if possible. ADA improvements at intersection especially on NE corner of US-1/NW 6th St. Intersection. Project Sponsor: Broward MPO | | | | | | | | | |
| CST | 0 | 0 | 0 | 0 | 0 | 0 | 0 | 5,100,000 | |
| PE | 0 | 0 | 0 | 0 | 0 | 0 | 0 | 969,000 | |
| Total | 0 | 0 | 0 | 0 | 0 | 0 | 0 | 6,069,000 | |
| CITY: FORT LAUDERDALE | | | OWNERSHIP: LOCAL/COUNTY | | | Total Project Cost Estimate: 6,069,000 | | | |
| 19 2021-New | Priority ROYAL PALM BLVD. FROM RIVERSIDE DR TO SR-7/US-441. - FM# | | | | | | Funding Source: FEDERAL | | |
| | Type of Work: BIKE LANES/SIDEWALK | | | | | | Proposed Study: N/A | | |
| | | | | | | LAP: Yes | | | No No Yes Yes |
| Fill in sidewalk gaps, Widen into median/outside where necessary to incorporate buffered bike lane, Continuous Furnishing Zone Project Sponsor: Broward MPO | | | | | | | | | |
| CST | 0 | 0 | 0 | 0 | 0 | 0 | 0 | 7,000,000 | |
| PE | 0 | 0 | 0 | 0 | 0 | 0 | 0 | 1,330,000 | |
| Total | 0 | 0 | 0 | 0 | 0 | 0 | 0 | 8,330,000 | |
| CITY: MARGATE/ CORAL SPRINGS | | | OWNERSHIP: LOCAL | | | Total Project Cost Estimate: 8,330,000 | | | |
| 20 2021-New | Priority Miramar Pkwy. from Douglas Rd. to SR-7 - FM# | | | | | | Funding Source: FEDERAL | | |
| | Type of Work: BIKE LANES/SIDEWALK | | | | | | Proposed Study: N/A | | |
| | | | | | | LAP: Yes | | | Yes No Yes Yes |
| Lane width reduction from Douglas Rd. to University to incorporate 8 ft. sidewalks on both sides (City of Miramar road), Milling and resurfacing, Will widen/replace sidewalks east of University Drive to SR-7 to 8' ft. (Broward County road), Transit amenities at bus stops Project Sponsor: Broward MPO | | | | | | | | | |
| CST | 0 | 0 | 0 | 0 | 0 | 0 | 0 | 8,300,000 | |
| PE | 0 | 0 | 0 | 0 | 0 | 0 | 0 | 1,577,000 | |
| Total | 0 | 0 | 0 | 0 | 0 | 0 | 0 | 9,877,000 | |
| CITY: MIRAMAR | | | OWNERSHIP: LOCAL/COUNTY | | | Total Project Cost Estimate: 9,877,000 | | | |

| Phase | <2022 | 2022 | 2023 | 2024 | 2025 | 2026 | Amount Funded | Funding Needed |
|-----------------------------------|--|----------|----------|------------------|----------|---|---------------|------------------|
| 21 Priority 2021-New | Atlantic Blvd. from NW 31 Ave to NW 6th Ave - FM# Type of Work: BIKE LANES/SIDEWALK Proposed Study: N/A LAP: No | | | | | Funding Source: STATE Yes Yes Yes Yes MTP Page # 5-30 MTP Timeframe: | | |
| | Decorative pedestrian lighting- coordination with FPL during Design – city staff mentioned the possibility to work with FPL to provide the light poles at no cost to the project. Include Cables for lighting, Shelters, bike racks, benches, trash receptacles. NW 16th Avenue possible ponding and drainage fix- through local agreement. Will analyze in design to determine who will fund. NW 27th Ave. to I-95: Widen sidewalk to full width available on north side at least 10 ft, SW 21st/Magner Drive- Widen sidewalk to guardrail face Project Sponsor: Broward MPO | | | | | | | |
| CST | 0 | 0 | 0 | 0 | 0 | 0 | 0 | 7,000,000 |
| PE | 0 | 0 | 0 | 0 | 0 | 0 | 0 | 1,330,000 |
| Total | 0 | 0 | 0 | 0 | 0 | 0 | 0 | 8,330,000 |
| CITY: POMPANO BEACH | | | | OWNERSHIP: STATE | | Total Project Cost Estimate: | | 8,330,000 |
| 22 Priority 2021-New | SW 81st Ave. from NW 62nd St. / Bailey Rd. to Southgate Blvd. - FM# Type of Work: BIKE LANES/SIDEWALK Proposed Study: N/A LAP: Yes | | | | | Funding Source: FEDERAL Yes No Yes Yes MTP Page # 5-30 MTP Timeframe: | | |
| | Project Limit- SW 81st. Ave. from NW 62nd St./ Bailey Rd. to Southgate Blvd., 2 roundabouts in corridor for traffic calming, Sharrows and multiuse path with pavement markings for sidewalk and bike lane designated area in each direction, Lower speed to 35 mph from 40 mph, Bus shelters and amenities, Landscape Buffer Project Sponsor: Broward MPO | | | | | | | |
| CST | 0 | 0 | 0 | 0 | 0 | 0 | 0 | 5,300,000 |
| PE | 0 | 0 | 0 | 0 | 0 | 0 | 0 | 1,007,000 |
| Total | 0 | 0 | 0 | 0 | 0 | 0 | 0 | 6,307,000 |
| CITY: NORTH LAUDERDALE | | | | OWNERSHIP: LOCAL | | Total Project Cost Estimate: | | 6,307,000 |
| 23 Priority 2021-New | NE 3rd Ave. from Sample Rd. to Hillsboro Blvd. - FM# Type of Work: BIKE LANES/SIDEWALK Proposed Study: N/A LAP: Yes | | | | | Funding Source: FEDERAL Yes Yes Yes Yes MTP Page # 5-30 MTP Timeframe: | | |
| | Sample Rd from NE 3rd Ave. to Dixie Highway: FPL can replace all light fixtures for this corridor for pedestrian lighting along Sample Rd., Widen sidewalk on Northside, Pedestrian lighting. NE 3rd Ave. from Sample Rd. to Hillsboro Blvd.: Speed tables at SW 10th St., NE 48th St., Sample to NE 44th St, Continuous bike lane, Possible Midblock crossing near Broward Hospital, Sidewalk gaps, Roundabout at NE 44 St. NE 44th St. to SW 10th St.: Shared use path on east side, Widen sidewalk and gaps on west side, Pedestrian lighting. SW 10th to Hillsboro Blvd.: Sidewalk gap on west side, 10' Shared use path on east side, Pedestrian lighting. Project Sponsor: Broward MPO | | | | | | | |
| CST | 0 | 0 | 0 | 0 | 0 | 0 | 0 | 5,500,000 |
| PE | 0 | 0 | 0 | 0 | 0 | 0 | 0 | 1,045,000 |
| Total | 0 | 0 | 0 | 0 | 0 | 0 | 0 | 6,545,000 |
| CITY: DEERFIELD BEACH | | | | OWNERSHIP: LOCAL | | Total Project Cost Estimate: | | 6,545,000 |

| | | |
|-----------------------|-------------------------|-------------------------|
| State Funds | Federal Funds | Local Funds |
| State and Local Funds | State and Federal Funds | Federal and Local Funds |

| Phase | <2022 | 2022 | 2023 | 2024 | 2025 | 2026 | Amount Funded | Funding Needed | | |
|--|--|----------|----------------------------|--------------------------|-----------------|-------------------------------------|--------------------------------|-------------------|----------------|------------|
| 24 | Priority Coral Springs Drive from Ramblewood Dr. to Wiles Rd. - FM# | | | | | | Funding Source: FEDERAL | | | |
| 2021-New | Type of Work: BIKE LANES/SIDEWALK | | Proposed Study: N/A | | LAP: Yes | | Yes | No | Yes | Yes |
| Transit amenities for whole corridor, Pedestrian Lighting throughout. Ramblewood Dr. to Royal Palm Blvd.: Sidewalk on east/west side, 6-7' bike lane. Royal Palm Blvd. to Wiles Rd.: Lane width reduction to 11' with widening into median for 6 ft bike lane, Irrigation fixes wherever widening into median occurs Project Sponsor: Broward MPO | | | | | | | MTP Page # 5-30 | | MTP Timeframe: | |
| CST | 0 | 0 | 0 | 0 | 0 | 0 | 0 | 5,500,000 | | |
| PE | 0 | 0 | 0 | 0 | 0 | 0 | 0 | 1,045,000 | | |
| Total | 0 | 0 | 0 | 0 | 0 | 0 | 0 | 6,545,000 | | |
| CITY: CORAL SPRINGS | | | | OWNERSHIP: COUNTY | | Total Project Cost Estimate: | | 6,545,000 | | |
| 25 | Priority Nob Hill Road from Sunset Strip to NW 44 St - FM# | | | | | | Funding Source: FEDERAL | | | |
| 2021-New | Type of Work: BIKE LANES/SIDEWALK | | Proposed Study: N/A | | LAP: Yes | | No | No | Yes | n/a |
| Grade separated bike lane, continuous furnishing zone, pedestrian lighting, Transit shelter and amenities Project Sponsor: Broward MPO | | | | | | | MTP Page # 5-30 | | MTP Timeframe: | |
| CST | 0 | 0 | 0 | 0 | 0 | 0 | 0 | 4,800,000 | | |
| PE | 0 | 0 | 0 | 0 | 0 | 0 | 0 | 912,000 | | |
| Total | 0 | 0 | 0 | 0 | 0 | 0 | 0 | 5,712,000 | | |
| CITY: SUNRISE | | | | OWNERSHIP: LOCAL | | Total Project Cost Estimate: | | 5,712,000 | | |
| 26 | Priority NW 44th St. from SR-7 to NW 21st Ave. - FM# | | | | | | Funding Source: FEDERAL | | | |
| 2021-New | Type of Work: BIKE LANES/SIDEWALK | | Proposed Study: N/A | | LAP: Yes | | No | No | Yes | No |
| SR-7 to NW 31st Ave: Lane reduction to 1 lane in each direction with keeping left turn lanes with 7' buffered/curbed bike lane, Possible mid-block crossing at football field/baseball field complex, Pedestrian lighting. NW 31st Ave. to NW 29th Ave.: Lane reduction to 1 lane in each direction with keeping left turn lanes with 7' buffered/curbed bike lane, Pedestrian lighting. NW 29th Ave. to NW 21st Ave.: 12' Grade separated/curb separated cycle track facility, Pedestrian lighting Project Sponsor: Broward MPO | | | | | | | MTP Page # 5-30 | | MTP Timeframe: | |
| CST | 0 | 0 | 0 | 0 | 0 | 0 | 0 | 26,000,000 | | |
| PE | 0 | 0 | 0 | 0 | 0 | 0 | 0 | 4,940,000 | | |
| Total | 0 | 0 | 0 | 0 | 0 | 0 | 0 | 30,940,000 | | |
| CITY: LUADERDALE LAKES/OAKLAND PARK | | | | OWNERSHIP: LOCAL | | Total Project Cost Estimate: | | 30,940,000 | | |

| Phase | <2022 | 2022 | 2023 | 2024 | 2025 | 2026 | Amount Funded | Funding Needed |
|-------------------------------------|--|----------|----------|-------------------|----------|----------|--|------------------|
| 27 2021-New | Priority N 29 Ave from Sheridan St. to Sterling Rd. - FM# Type of Work: BIKE LANES/SIDEWALK Proposed Study: N/A LAP: Yes | | | | | | Funding Source: FEDERAL Yes Yes Yes Yes MTP Page # 5-30 MTP Timeframe: | |
| | Lane elimination, Pedestrian lighting, Wider sidewalks with pavers, Dedicated center turn lane, Buffered bike lane with plastic delineators, Milling and resurfacing, Possible landscape opportunity areas (furnishing zone) between sidewalk and bike lane Project Sponsor: Broward MPO | | | | | | | |
| CST | 0 | 0 | 0 | 0 | 0 | 0 | 0 | 5,000,000 |
| PE | 0 | 0 | 0 | 0 | 0 | 0 | 0 | 950,000 |
| Total | 0 | 0 | 0 | 0 | 0 | 0 | 0 | 5,950,000 |
| CITY: HOLLYWOOD | | | | OWNERSHIP: LOCAL | | | Total Project Cost Estimate: 5,950,000 | |
| 28 2021-New | Priority McNab Rd. from NW 31 AVE to Dixie Hwy - FM# Type of Work: BIKE LANES/SIDEWALK Proposed Study: N/A LAP: Yes | | | | | | Funding Source: FEDERAL No No Yes No MTP Page # 5-30 MTP Timeframe: | |
| | Lane Elimination (Powerline Rd. to Dixie Hy) -Convert To A Continuous 4L Corridor: Widen medians in Lane Elimination section, Landscaping opportunity areas, Irrigation sleeves. Separated Bicycle Lanes, Continuous Pedestrian Zones (Sidewalk Gaps)- Should be covered by Broward County project, Pedestrian Lighting, Transit Amenities, Bus Shelters. Additional pedestrian crossings potentially including NW 29th Avenue and NW 27th Avenue, NW 17th Ave, NW 15th Ave and NW 12th Ave, and east of Powerline where appropriate. Project Sponsor: Broward MPO | | | | | | | |
| CST | 0 | 0 | 0 | 0 | 0 | 0 | 0 | 5,400,000 |
| PE | 0 | 0 | 0 | 0 | 0 | 0 | 0 | 1,026,000 |
| Total | 0 | 0 | 0 | 0 | 0 | 0 | 0 | 6,426,000 |
| CITY: POMPANO BEACH/FORT LAUDERDALE | | | | OWNERSHIP: COUNTY | | | Total Project Cost Estimate: 6,426,000 | |
| 29 2021-New | Priority SW 172 Ave from Bass Creek Rd. to Pembroke Rd - FM# Type of Work: BIKE LANES/SIDEWALK Proposed Study: N/A LAP: Yes | | | | | | Funding Source: FEDERAL Yes Yes Yes Yes MTP Page # 5-30 MTP Timeframe: | |
| | Pedestrian lighting., shelters/Bike racks, Milling and resurfacing. Bass Creek Rd to Miramar Parkway: Buffered bike lanes, Shared use path on west side- pedestrian lighting, All lanes widths to 11 ft. Miramar Parkway to Pembroke Road: Separated shared use path on both sides with bike lane markings, Lane width reduction to 11 ft Project Sponsor: Broward MPO | | | | | | | |
| CST | 0 | 0 | 0 | 0 | 0 | 0 | 0 | 3,300,000 |
| PE | 0 | 0 | 0 | 0 | 0 | 0 | 0 | 627,000 |
| Total | 0 | 0 | 0 | 0 | 0 | 0 | 0 | 3,927,000 |
| CITY: MIRAMAR | | | | OWNERSHIP: LOCAL | | | Total Project Cost Estimate: 3,927,000 | |

| Phase | <2022 | 2022 | 2023 | 2024 | 2025 | 2026 | Amount Funded | Funding Needed | | |
|--|--|----------|-----------------|-------------------------|---------------|----------|--|-------------------|-----------|-----|
| 01 | SR-9/I-95 MOBILITY HUB AT CYPRESS CREEK - FM# 4358085 | | | | | | Funding Source: STATE AND FEDERAL | | | |
| 2021-01 | Type of Work: BIKE LANE/SIDEWALK | | Proposed Study: | | LAP: No | | Yes | Yes | Yes | Yes |
| WIDENING FOR ADDITIONAL TURN LANE AND BIKE LANES, SIDEWALK CONSTRUCTION, RESURFACING. WEST CYPRESS CREEK RD FROM POWER LINE RD TO W OF SFRC; NW 59TH CT; N ANDREWS WAY. NO RIGHT OF WAY REQUIRED 2021 MPO HUB PRIORITY #1. | | | | | | | | | | |
| *Allocate \$272,134 of CARES funds to FY 2024 for Landscaping. | | | | | | | | | | |
| CEI | 0 | 0 | 0 | 754,942 | 16,538 | 0 | 771,480 | 0 | | |
| Construction | 0 | 0 | 0 | 4,328,357 | 0 | 0 | 4,328,357 | 0 | | |
| Landscaping-CARES* | 0 | 0 | 0 | 0 | 0 | 0 | 0 | 272,134 | | |
| Total | 0 | 0 | 0 | 5,083,299 | 16,538 | 0 | 5,099,837 | 272,134 | | |
| CITY: FORT LAUDERDALE | | | | OWNERSHIP: COUNTY/STATE | | | Total Project Cost Estimate: | | 5,371,971 | |

| Phase | <2022 | 2022 | 2023 | 2024 | 2025 | 2026 | Amount Funded | Funding Needed | | |
|---|--|----------------|----------------------|------------------|------------------|------------------------------|--|--------------------------|-----|-----|
| 01 | PEMBROKE ROAD FROM DOUGLAS ROAD (SW 89 AV) TO SR-817/UNIVERSITY DRIVE - FM# 4369801 | | | | | | Funding Source: STATE AND FEDERAL | | | |
| 2021-03 | Type of Work: ADD LANES & RECONSTRUCT | | Proposed Study: N/A | | LAP: NO | | Yes | Yes | Yes | Yes |
| 2021 MPO HIGHWAY PRIORITY #3 WIDEN 4 TO 6 LANES 22-01 TRAFFIC PROJECTIONS, SURVEYS, EDTM ACTIVITIES | | | | | | | MTP Page # 5-4 | MTP Timeframe: 2021-2025 | | |
| RW Land | 0 | 0 | 0 | 0 | 1,782,961 | 0 | 1,782,961 | 0 | | |
| RW Support | 0 | 0 | 0 | 0 | 205,927 | 0 | 205,927 | 0 | | |
| PDE | 1,798,043 | 0 | 0 | 0 | 0 | 0 | 1,798,043 | 0 | | |
| PE | 782,047 | 0 | 0 | 0 | 0 | 0 | 782,047 | 0 | | |
| CST | 0 | 0 | 0 | 0 | 0 | 0 | 0 | 3,099,573 | | |
| Total | 2,580,090 | 0 | 0 | 0 | 1,988,888 | 0 | 4,568,978 | 3,099,573 | | |
| CITY: MIRAMAR/PEMBROKE PINES | | | | OWNERSHIP: LOCAL | | Total Project Cost Estimate: | | 7,668,551 | | |
| 02 | SR-5/US-1 @ SR-838/SUNRISE BOULEVARD - FM# 4419551 | | | | | | Funding Source: STATE | | | |
| 2021-04 | Type of Work: PD&E/EMO STUDY | | Proposed Study: PD&E | | LAP: NO | | Yes | Yes | Yes | Yes |
| 2021 MPO PRIORITY #4 @ GATEWAY THEATER R/W NEEDED | | | | | | | MTP Page # 5-4 | MTP Timeframe: 2021-2025 | | |
| PDE | 0 | 510,000 | 1,500,000 | 0 | 0 | 0 | 2,010,000 | 0 | | |
| PE | 0 | 0 | 0 | 0 | 0 | 4,010,000 | 4,010,000 | 0 | | |
| CST | 0 | 0 | 0 | 0 | 0 | 0 | 0 | 19,439,122 | | |
| Total | 0 | 510,000 | 1,500,000 | 0 | 0 | 4,010,000 | 6,020,000 | 19,439,122 | | |
| CITY: FORT LAUDERDALE | | | | OWNERSHIP: STATE | | Total Project Cost Estimate: | | 25,459,122 | | |
| 03 | SR-820/PINES BLVD FROM US-27 TO NW 196TH AVE - FM# 4449771 | | | | | | Funding Source: STATE | | | |
| 2021-05 | Type of Work: PD&E/EMO STUDY | | Proposed Study: PD&E | | LAP: NO | | Yes | Yes | Yes | Yes |
| 2021 MPO PRIORITY #5 4L TO 6L; IS R/W NEEDED | | | | | | | MTP Page # 5-4 | MTP Timeframe: 2021-2025 | | |
| PDE | 0 | 0 | 700,000 | 2,000,000 | 0 | 0 | 2,700,000 | 0 | | |
| PE | 0 | 0 | 0 | 0 | 849,882 | 0 | 849,882 | 1,160,118 | | |
| CST | 0 | 0 | 0 | 0 | 0 | 0 | 0 | 8,481,698 | | |
| Total | 0 | 0 | 700,000 | 2,000,000 | 849,882 | 0 | 3,549,882 | 9,641,816 | | |
| CITY: PEMBROKE PINES | | | | OWNERSHIP: STATE | | Total Project Cost Estimate: | | 13,191,698 | | |

| Phase | <2022 | 2022 | 2023 | 2024 | 2025 | 2026 | Amount Funded | Funding Needed | |
|---|---|----------|----------------------|----------------|------------------|--|-----------------------|--------------------------|--|
| 04 | SR-820/PINES BLVD. @ SR-823/FLAMINGO RD - FM# 4080462 | | | | | | Funding Source: STATE | | |
| 2021-06 | Type of Work: PD&E/EMO STUDY | | Proposed Study: PD&E | | LAP: NO | Yes Yes Yes Yes | | | |
| 2021 MPO PRIORITY #6 IS R/W NEEDED 22-01: PRE-WORK; 22-02: FEASIBILITY STUDY; 22-03: PD&E | | | | | | | MTP Page # 5-4 | MTP Timeframe: 2021-2025 | |
| PDE | 0 | 0 | 610,000 | 500,000 | 1,500,000 | 0 | 2,610,000 | 0 | |
| PE | 0 | 0 | 0 | 0 | 0 | 2,010,000 | 2,010,000 | 5,280,000 | |
| ROW | 0 | 0 | 0 | 0 | 0 | 0 | 0 | 45,000,000 | |
| CST | 0 | 0 | 0 | 0 | 0 | 0 | 0 | 45,000,000 | |
| Total | 0 | 0 | 610,000 | 500,000 | 1,500,000 | 2,010,000 | 4,620,000 | 95,280,000 | |
| CITY: PEMBROKE PINES | | | OWNERSHIP: STATE | | | Total Project Cost Estimate: 99,900,000 | | | |
| 05 | SR-845/POWERLINE RD FROM SW 10TH ST TO BROWARD/PALM BEACH COUNTY LINE - FM# 4463781 | | | | | | Funding Source: STATE | | |
| 2021-07 | Type of Work: PD&E/EMO STUDY | | Proposed Study: PD&E | | LAP: NO | Yes Yes Yes Yes | | | |
| 2021 MPO PRIORITY# 7 WIDEN FROM 4 TO 6 LANES IS R/W NEEDED | | | | | | | MTP Page # 5-11 | MTP Timeframe: 2025 | |
| PDE | 0 | 0 | 0 | 0 | 500,000 | 1,500,000 | 2,000,000 | 0 | |
| PE | 0 | 0 | 0 | 0 | 0 | 0 | 0 | 576,332 | |
| ROW | 0 | 0 | 0 | 0 | 0 | 0 | 0 | 11,710,602 | |
| CST | 0 | 0 | 0 | 0 | 0 | 0 | 0 | 11,710,602 | |
| Total | 0 | 0 | 0 | 0 | 500,000 | 1,500,000 | 2,000,000 | 23,997,536 | |
| CITY: DEERFIELD BEACH | | | OWNERSHIP: STATE | | | Total Project Cost Estimate: 25,997,536 | | | |
| 06 | SR-7/US-441 @ SR-870/COMMERCIAL BLVD - FM# 4463801 | | | | | | Funding Source: STATE | | |
| 2021-08 | Type of Work: PD&E/EMO STUDY | | Proposed Study: PD&E | | LAP: NO | Yes Yes Yes Yes | | | |
| 2021 MPO PRIORITY# 8 IS R/W NEEDED | | | | | | | MTP Page # 5-17 | MTP Timeframe: 2031-2035 | |
| PDE | 0 | 0 | 0 | 0 | 600,000 | 2,000,000 | 2,600,000 | 0 | |
| PE | 0 | 0 | 0 | 0 | 0 | 0 | 0 | 32,560,000 | |
| ROW | 0 | 0 | 0 | 0 | 0 | 0 | 0 | 148,000,000 | |
| CST | 0 | 0 | 0 | 0 | 0 | 0 | 0 | 148,000,000 | |
| Total | 0 | 0 | 0 | 0 | 600,000 | 2,000,000 | 2,600,000 | 328,560,000 | |
| CITY: TAMARAC | | | OWNERSHIP: STATE | | | Total Project Cost Estimate: 183,160,000 | | | |

| Phase | <2022 | 2022 | 2023 | 2024 | 2025 | 2026 | Amount Funded | Funding Needed | |
|--|---|----------|-----------------------------|----------|----------------|--|--|-------------------|--|
| 07 | SW 130TH AVE FROM SW 8TH ST TO SR-84 - FM# 4463811 | | | | | | Funding Source: FEDERAL | | |
| 2021-09 | Type of Work: FEASIBILITY STUDY | | Proposed Study: Feasibility | | LAP: NO | Yes Yes Yes Yes | MTP Page # 5-16 MTP Timeframe: 2026-2030 | | |
| 2021 MPO HIGHWAY PRIORITY# 9 IS R/W NEEDED | | | | | | | | | |
| PDE | 0 | 0 | 0 | 0 | 500,000 | 0 | 500,000 | 0 | |
| PE | 0 | 0 | 0 | 0 | 0 | 0 | 0 | 686,680 | |
| CST | 0 | 0 | 0 | 0 | 0 | 0 | 0 | 5,394,800 | |
| Total | 0 | 0 | 0 | 0 | 500,000 | 0 | 500,000 | 6,081,480 | |
| CITY: DAVIE | | | OWNERSHIP: LOCAL | | | Total Project Cost Estimate: 6,581,480 | | | |
| 08 | SW 136TH AVE FROM SW 26TH ST TO SW 6TH CT - FM# 4463812 | | | | | | Funding Source: FEDERAL | | |
| 2021-10 | Type of Work: PD&E/EMO STUDY | | Proposed Study: PD&E | | LAP: NO | Yes Yes Yes Yes | MTP Page # 5-16 MTP Timeframe: 2026-2030 | | |
| 2021 MPO PRIORITY# 10 WIDEN 2 TO 4 LANES IS R/W NEEDED | | | | | | | | | |
| PDE | 0 | 0 | 0 | 0 | 500,000 | 1,750,000 | 2,250,000 | 0 | |
| PE | 0 | 0 | 0 | 0 | 0 | 0 | 0 | 2,405,320 | |
| CST | 0 | 0 | 0 | 0 | 0 | 0 | 0 | 13,206,000 | |
| Total | 0 | 0 | 0 | 0 | 500,000 | 1,750,000 | 2,250,000 | 15,611,320 | |
| CITY: DAVIE | | | OWNERSHIP: LOCAL | | | Total Project Cost Estimate: 17,861,320 | | | |
| 09 | SR-822/SHERIDAN STREET FROM DIXIE HIGHWAY TO SR-5/US 1 - FM# 4479221 | | | | | | Funding Source: STATE | | |
| 2021-11 | Type of Work: PD&E/EMO STUDY | | Proposed Study: PD&E | | LAP: NO | Yes Yes Yes Yes | MTP Page # 5-11 MTP Timeframe: 2025 | | |
| 2021 MPO PRIORITY # 11 IS R/W NEEDED | | | | | | | | | |
| PDE | 0 | 0 | 0 | 0 | 0 | 505,000 | 505,000 | 0 | |
| PE | 0 | 0 | 0 | 0 | 0 | 0 | 0 | 941,147 | |
| ROW | 0 | 0 | 0 | 0 | 0 | 0 | 0 | 38,332,475 | |
| CST | 0 | 0 | 0 | 0 | 0 | 0 | 0 | 4,277,940 | |
| Total | 0 | 0 | 0 | 0 | 0 | 505,000 | 505,000 | 43,551,562 | |
| CITY: DANIA BEACH/HOLLYWOOD | | | OWNERSHIP: STATE | | | Total Project Cost Estimate: 44,056,562 | | | |

| Phase | <2022 | 2022 | 2023 | 2024 | 2025 | 2026 | Amount Funded | Funding Needed | |
|--|--|----------|----------|-----------------------------------|----------|---|------------------------------|--------------------------|-----------------------|
| 10 | Priority Hollywood Blvd from US-1 to SR-A1A - FM# | | | | | | Funding Source: STATE | | |
| 2021-12 | Type of Work: Resiliency Study | | | Proposed Study: Resiliency | | LAP: NO | Yes | N/A | Yes Yes |
| Conduct study to determine resiliency improvements. Planning study included in 4481321 SOUTHEAST BROWARD RESILIENCY STUDY - PHASE 1 - MULTIPLE LOCATIONS. Project Sponsor: Broward MPO | | | | | | | MTP Page # 5-13 | MTP Timeframe: 2026-2030 | |
| PE | 0 | 0 | 0 | 0 | 0 | 0 | 0 | 1,500,000 | |
| Total | 0 | 0 | 0 | 0 | 0 | 0 | 0 | 1,500,000 | |
| CITY: HOLLYWOOD | | | | OWNERSHIP: STATE | | Total Project Cost Estimate: 1,500,000 | | | |
| 11 | Priority SR-A1A from South of Arizona St to Hallandale Beach Blvd - FM# | | | | | | Funding Source: STATE | | |
| 2021-13 | Type of Work: Resiliency Study | | | Proposed Study: Resiliency | | LAP: NO | Yes | N/A | Yes Yes |
| Conduct study to determine resiliency improvements. Drainage improvements programmed in FM# 4485741, 4488761, 4485771. Project Sponsor: Broward MPO | | | | | | | MTP Page # 5-13 | MTP Timeframe: 2026-2030 | |
| PE | 0 | 0 | 0 | 0 | 0 | 0 | 0 | 1,500,000 | |
| Total | 0 | 0 | 0 | 0 | 0 | 0 | 0 | 1,500,000 | |
| CITY: HALLANDALE BEACH | | | | OWNERSHIP: STATE | | Total Project Cost Estimate: 1,500,000 | | | |
| 12 | Priority US-1/SR-5 from Las Olas Blvd to Davie Blvd - FM# | | | | | | Funding Source: STATE | | |
| 2021-14 | Type of Work: Resiliency Study | | | Proposed Study: Resiliency | | LAP: NO | Yes | N/A | Yes Yes |
| Conduct study to determine resiliency improvements. Planning study included in 4480881 SR-5/US-1 FT LAUDERDALE RESILIENCY STUDY - PHASE 1. Project Sponsor: Broward MPO | | | | | | | MTP Page # 5-13 | MTP Timeframe: 2026-2030 | |
| PE | 0 | 0 | 0 | 0 | 0 | 0 | 0 | 1,500,000 | |
| Total | 0 | 0 | 0 | 0 | 0 | 0 | 0 | 1,500,000 | |
| CITY: FORT LAUDERDALE | | | | OWNERSHIP: STATE | | Total Project Cost Estimate: 1,500,000 | | | |
| 13 | Priority US-1 from Broward Blvd to Las Olas Blvd - FM# | | | | | | Funding Source: STATE | | |
| 2021-15 | Type of Work: Resiliency Study | | | Proposed Study: Resiliency | | LAP: NO | Yes | N/A | Yes Yes |
| Conduct study to determine resiliency improvements. Planning study included in 4480881 SR-5/US-1 FT LAUDERDALE RESILIENCY STUDY - PHASE 1. Project Sponsor: Broward MPO | | | | | | | MTP Page # 5-13 | MTP Timeframe: 2026-2030 | |
| PE | 0 | 0 | 0 | 0 | 0 | 0 | 0 | 750,000 | |
| Total | 0 | 0 | 0 | 0 | 0 | 0 | 0 | 750,000 | |
| CITY: FORT LAUDERDALE | | | | OWNERSHIP: STATE | | Total Project Cost Estimate: 750,000 | | | |

| Phase | <2022 | 2022 | 2023 | 2024 | 2025 | 2026 | Amount Funded | Funding Needed | | |
|---|--|----------|------------------------------------|----------|----------------|-------------------------------------|------------------------------|-------------------|--------------------------|------------|
| 14 | Priority Las Olas Blvd. from US-1 to SR-A1A - FM# | | | | | | Funding Source: STATE | | | |
| 2021-16 | Type of Work: Resiliency Study | | Proposed Study: Resiliency | | LAP: NO | | Yes | N/A | Yes | Yes |
| Conduct study to determine resiliency improvements. Project Sponsor: Broward MPO | | | | | | | MTP Page # 5-13 | | MTP Timeframe: 2026-2030 | |
| PE | 0 | 0 | 0 | 0 | 0 | 0 | 0 | 1,500,000 | | |
| Total | 0 | 0 | 0 | 0 | 0 | 0 | 0 | 1,500,000 | | |
| CITY: FORT LAUDERDALE | | | OWNERSHIP: STATE/LOCAL | | | Total Project Cost Estimate: | | 1,500,000 | | |
| 15 | Priority US-1 from Pembroke Rd to Hallandale Beach Blvd - FM# | | | | | | Funding Source: STATE | | | |
| 2021-17 | Type of Work: Resiliency Study | | Proposed Study: Resiliency | | LAP: NO | | Yes | N/A | Yes | Yes |
| Conduct study to determine resiliency improvements. Planning study included in 4481321 SOUTHEAST BROWARD RESILIENCY STUDY - PHASE 1 - MULTIPLE LOCATIONS. Project Sponsor: Broward MPO | | | | | | | MTP Page # 5-13 | | MTP Timeframe: 2026-2030 | |
| PE | 0 | 0 | 0 | 0 | 0 | 0 | 0 | 1,000,000 | | |
| Total | 0 | 0 | 0 | 0 | 0 | 0 | 0 | 1,000,000 | | |
| CITY: HALLANDALE BEACH | | | OWNERSHIP: STATE | | | Total Project Cost Estimate: | | 1,000,000 | | |
| 16 | Priority Hallandale Beach Blvd From US-1 to SR-A1A - FM# | | | | | | Funding Source: STATE | | | |
| 2021-18 | Type of Work: Resiliency Study | | Proposed Study: Resiliency | | LAP: NO | | Yes | N/A | Yes | Yes |
| Conduct study to determine resiliency improvements. Planning study included in 4481321 SOUTHEAST BROWARD RESILIENCY STUDY - PHASE 1 - MULTIPLE LOCATIONS. Project Sponsor: Broward MPO | | | | | | | MTP Page # 5-13 | | MTP Timeframe: 2026-2030 | |
| PE | 0 | 0 | 0 | 0 | 0 | 0 | 0 | 1,500,000 | | |
| Total | 0 | 0 | 0 | 0 | 0 | 0 | 0 | 1,500,000 | | |
| CITY: HALLANDALE BEACH | | | OWNERSHIP: STATE | | | Total Project Cost Estimate: | | 1,500,000 | | |
| 17 | Priority Dixie Hwy Corridor from Oakland Park Blvd to Prospect Rd - FM# | | | | | | Funding Source: STATE | | | |
| 2021-19 | Type of Work: Bike/Ped | | Proposed Study: Feasibility | | LAP: NO | | Yes | Yes | Yes | Yes |
| Conduct multimodal feasibility study. Corridor upgrades to enhance safety and convenience for walkers, cyclists, motorists and those using public transit. Providing for enhanced pedestrian crossing across Dixie Highway and the FEC, while adding multi-modal forms of transportation. Project Sponsor: City of Oakland Park | | | | | | | MTP Page # 5-13 | | MTP Timeframe: 2026-2030 | |
| PE | 0 | 0 | 0 | 0 | 0 | 0 | 0 | 600,000 | | |
| Total | 0 | 0 | 0 | 0 | 0 | 0 | 0 | 600,000 | | |
| CITY: OAKLAND PARK | | | OWNERSHIP: STATE | | | Total Project Cost Estimate: | | 600,000 | | |

| | | |
|-----------------------|-------------------------|-------------------------|
| State Funds | Federal Funds | Local Funds |
| State and Local Funds | State and Federal Funds | Federal and Local Funds |

| Phase | <2022 | 2022 | 2023 | 2024 | 2025 | 2026 | Amount Funded | Funding Needed | |
|--|---------------|--|------------------------|-----------------|----------|-------------|------------------------------|-------------------|--|
| 18 | Priority | SE 10th St from Dixie Hwy to US-1 - FM# | | | | | Funding Source: STATE | | |
| 2021-20 | Type of Work: | Feasibility Study | | Proposed Study: | | Feasibility | LAP: | NO | Yes Yes Yes Yes |
| Conduct multimodal feasibility study. The City is concerned that once 10th street improvements are completed, additional trips will occur eastbound and the current roadway cannot handle this increase at this time. Project Sponsor: City of Deerfield Beach | | | | | | | | | |
| PE | 0 | 0 | 0 | 0 | 0 | 0 | 0 | 750,000 | |
| Total | 0 | 0 | 0 | 0 | 0 | 0 | 0 | 750,000 | |
| CITY: DEERFIELD BEACH | | | OWNERSHIP: STATE/LOCAL | | | | Total Project Cost Estimate: | | 750,000 |
| 19 | Priority | County Line Rd/HEFT Extension from I-95 to Florida's Turnpike - FM# | | | | | Funding Source: STATE | | |
| 2021-21 | Type of Work: | Feasibility study | | Proposed Study: | | Feasibility | LAP: | NO | Yes N/A Yes Yes |
| Conduct multimodal feasibility study. Coordination will be needed with FDOT District 6. Project Sponsor: Broward MPO | | | | | | | | | |
| PE | 0 | 0 | 0 | 0 | 0 | 0 | 0 | 1,500,000 | |
| Total | 0 | 0 | 0 | 0 | 0 | 0 | 0 | 1,500,000 | |
| CITY: MIRAMAR/PEMBROKE PARK/WEST PARK | | | OWNERSHIP: STATE | | | | Total Project Cost Estimate: | | 1,500,000 |
| 20 | Priority | Pompano Beach FEC-SFRC connection - FM# | | | | | Funding Source: STATE | | |
| 2021-22 | Type of Work: | New track connection | | Proposed Study: | | PD&E | LAP: | NO | Yes Yes Yes Yes |
| Construct track connection between FEC rail corridor and SFRC at Pompano Beach. Project requires buy in from FEC & CSX. FM# 417031-9. Project Sponsor: SFRTA | | | | | | | | | |
| PE | 0 | 0 | 0 | 0 | 0 | 0 | 0 | 7,700,000 | |
| ROW | 0 | 0 | 0 | 0 | 0 | 0 | 0 | 35,000,000 | |
| CST | 0 | 0 | 0 | 0 | 0 | 0 | 0 | 35,000,000 | |
| Total | 0 | 0 | 0 | 0 | 0 | 0 | 0 | 77,700,000 | |
| CITY: POMPANO BEACH | | | OWNERSHIP: STATE | | | | Total Project Cost Estimate: | | 77,700,000 |

| Phase | <2022 | 2022 | 2023 | 2024 | 2025 | 2026 | Amount Funded | Funding Needed | | |
|--|--|----------|-----------------------------|------------------|----------------|----------|--|--------------------------|------------|------------|
| 21 | Griffin Rd @ Old Griffin Rd intersection - FM# | | | | | | Funding Source: STATE | | | |
| 2021-23 | Type of Work: Intersection Improvement | | Proposed Study: N/A | | LAP: NO | | Yes | Yes | Yes | Yes |
| Construct interim reconfiguration of north approach to intersection. Project Sponsor: FDOT | | | | | | | MTP Page # 5-14 | MTP Timeframe: 2026-2030 | | |
| PE | 0 | 0 | 0 | 0 | 0 | 0 | 0 | 440,000 | | |
| ROW | 0 | 0 | 0 | 0 | 0 | 0 | 0 | 2,000,000 | | |
| CST | 0 | 0 | 0 | 0 | 0 | 0 | 0 | 2,000,000 | | |
| Total | 0 | 0 | 0 | 0 | 0 | 0 | 0 | 4,440,000 | | |
| CITY: DANIA BEACH | | | | OWNERSHIP: STATE | | | Total Project Cost Estimate: 4,440,000 | | | |
| 22 | Florida's Turnpike Interchange @ Griffin Rd/Orange Dr - FM# | | | | | | Funding Source: STATE | | | |
| 2021-24 | Type of Work: Interchange Improvements | | Proposed Study: N/A | | LAP: NO | | Yes | Yes | Yes | Yes |
| Construct improvements to interchange. The Orange Drive, Griffin Road, Turnpike interchange is congested and confusing. Project goes with FM# 406095-4. Project Sponsor: Town of Davie | | | | | | | MTP Page # 5-14 | MTP Timeframe: 2026-2030 | | |
| PE | 0 | 0 | 0 | 0 | 0 | 0 | 0 | 9,240,000 | | |
| ROW | 0 | 0 | 0 | 0 | 0 | 0 | 0 | 0 | | |
| CST | 0 | 0 | 0 | 0 | 0 | 0 | 0 | 42,000,000 | | |
| Total | 0 | 0 | 0 | 0 | 0 | 0 | 0 | 51,240,000 | | |
| CITY: DAVIE | | | | OWNERSHIP: STATE | | | Total Project Cost Estimate: 51,240,000 | | | |
| 23 | SR-810/Oakland Park Blvd @ SR-7/US-441 - FM# | | | | | | Funding Source: STATE | | | |
| 2021-25 | Type of Work: Intersection Improvement | | Proposed Study: PD&E | | LAP: NO | | Yes | Yes | Yes | Yes |
| Construct center turn overpass. Project is associated with TSM&O/Safety Project "SR-810/Oakland Park Blvd @ SR-7/US-441". Project Sponsor: Broward MPO | | | | | | | MTP Page # 5-14 | MTP Timeframe: 2026-2030 | | |
| PE | 0 | 0 | 0 | 0 | 0 | 0 | 0 | 9,900,000 | | |
| ROW | 0 | 0 | 0 | 0 | 0 | 0 | 0 | 45,000,000 | | |
| CST | 0 | 0 | 0 | 0 | 0 | 0 | 0 | 45,000,000 | | |
| Total | 0 | 0 | 0 | 0 | 0 | 0 | 0 | 99,900,000 | | |
| CITY: LAUDERDALE LAKES | | | | OWNERSHIP: STATE | | | Total Project Cost Estimate: 99,900,000 | | | |

| Phase | <2022 | 2022 | 2023 | 2024 | 2025 | 2026 | Amount Funded | Funding Needed | | |
|--|---------------|--|----------|----------------------|----------|------------------------------|------------------------------|--------------------------|------------|------------|
| 24 | Priority | US-1/SR-5 from McNab Rd/15th St to Cypress Creek Rd/62nd St - FM# | | | | | Funding Source: STATE | | | |
| 2021-26 | Type of Work: | Add eastbound left turn lane | | Proposed Study: N/A | | LAP: NO | Yes | No | Yes | No |
| Add eastbound left-turn lane. Project Sponsor: FDOT | | | | | | | MTP Page # 5-14 | MTP Timeframe: 2026-2030 | | |
| PE | 0 | 0 | 0 | 0 | 0 | 0 | 0 | 441,980 | | |
| CST | 0 | 0 | 0 | 0 | 0 | 0 | 0 | 2,009,000 | | |
| Total | 0 | 0 | 0 | 0 | 0 | 0 | 0 | 2,450,980 | | |
| CITY: FORT LAUDERDALE | | | | OWNERSHIP: STATE | | Total Project Cost Estimate: | | 2,450,980 | | |
| 25 | Priority | University Dr @ Royal Palm Blvd - FM# | | | | | Funding Source: STATE | | | |
| 2021-27 | Type of Work: | Add dual left turn lanes | | Proposed Study: PD&E | | LAP: NO | Yes | Yes | Yes | Yes |
| Add dual left-turn lanes on University Dr southbound at Royal Palm Blvd. Environmental study may be needed. Project Sponsor: City of Coral Springs | | | | | | | MTP Page # 5-14 | MTP Timeframe: 2026-2030 | | |
| PE | 0 | 0 | 0 | 0 | 0 | 0 | 0 | 102,666 | | |
| ROW | 0 | 0 | 0 | 0 | 0 | 0 | 0 | 466,662 | | |
| CST | 0 | 0 | 0 | 0 | 0 | 0 | 0 | 466,662 | | |
| Total | 0 | 0 | 0 | 0 | 0 | 0 | 0 | 1,035,990 | | |
| CITY: CORAL SPRINGS | | | | OWNERSHIP: STATE | | Total Project Cost Estimate: | | 1,035,990 | | |
| 26 | Priority | SR-A1A @ Hillsboro Blvd - FM# | | | | | Funding Source: STATE | | | |
| 2021-28 | Type of Work: | Intersection reconfiguration | | Proposed Study: PD&E | | LAP: NO | Yes | Yes | Yes | Yes |
| Reconfigure intersection; additional EB to NB turn lane, allow throughmovement EB to WB, and extend left-turn lane NB to WB. Traffic headed East, West, and North are congested, and cars often require two or three light-cycles to pass through the intersection. The Town Commission expressed the importance of this project with the MPO, FDOT and County. Project Sponsor: Town of Hillsboro Beach | | | | | | | MTP Page # 5-15 | MTP Timeframe: 2026-2030 | | |
| PE | 0 | 0 | 0 | 0 | 0 | 0 | 0 | 676,129 | | |
| ROW | 0 | 0 | 0 | 0 | 0 | 0 | 0 | 3,073,311 | | |
| CST | 0 | 0 | 0 | 0 | 0 | 0 | 0 | 3,073,311 | | |
| Total | 0 | 0 | 0 | 0 | 0 | 0 | 0 | 6,822,751 | | |
| CITY: DEERFIELD BEACH | | | | OWNERSHIP: STATE | | Total Project Cost Estimate: | | 6,822,751 | | |

| Phase | <2022 | 2022 | 2023 | 2024 | 2025 | 2026 | Amount Funded | Funding Needed | |
|---|---------------|--|----------|------------------|----------|------------|--------------------------------|-------------------|--|
| 27 | Priority | Hallandale Beach @ NE 14th Ave - FM# | | | | | Funding Source: STATE | | |
| 2021-29 | Type of Work: | East Bound - Add Turn Lane | | Proposed Study: | | PD&E | LAP: | NO | Yes Yes Yes Yes |
| Implement dual left-turn lane from EB Hallandale Beach Blvd to NB NE 14th Ave. Inadequate storage capacity creates traffic congestion on eastbound Hallandale Beach Blvd. Right of way is required. Project Sponsor: City of Hallandale Beach | | | | | | | | | |
| PE | 0 | 0 | 0 | 0 | 0 | 0 | 0 | 368,131 | |
| ROW | 0 | 0 | 0 | 0 | 0 | 0 | 0 | 1,673,325 | |
| CST | 0 | 0 | 0 | 0 | 0 | 0 | 0 | 1,673,325 | |
| Total | 0 | 0 | 0 | 0 | 0 | 0 | 0 | 3,714,781 | |
| CITY: HALLANDALE BEACH | | | | OWNERSHIP: STATE | | | Total Project Cost Estimate: | | 3,714,781 |
| 28 | Priority | South Florida Rail Corridor @ Copans Rd - FM# | | | | | Funding Source: STATE | | |
| 2021-30 | Type of Work: | Grade separation | | Proposed Study: | | PD&E | LAP: | NO | Yes Yes Yes Yes |
| Construct grade separation at railroad crossing. Feasibility study is currently in Work Program. FDOT rail office is looking at grade separation in multiple locations. Project Sponsor: Broward MPO | | | | | | | | | |
| PE | 0 | 0 | 0 | 0 | 0 | 0 | 0 | 5,198,600 | |
| ROW | 0 | 0 | 0 | 0 | 0 | 0 | 0 | 23,630,000 | |
| CST | 0 | 0 | 0 | 0 | 0 | 0 | 0 | 23,630,000 | |
| Total | 0 | 0 | 0 | 0 | 0 | 0 | 0 | 52,458,600 | |
| CITY: POMPANO BEACH | | | | OWNERSHIP: STATE | | | Total Project Cost Estimate: | | 52,458,600 |
| 29 | Priority | Johnson St from US-1 to N 14th Ave - FM# | | | | | Funding Source: FEDERAL | | |
| 2021-31 | Type of Work: | Resiliency Study | | Proposed Study: | | Resiliency | LAP: | NO | Yes N/A Yes Yes |
| Conduct study to determine resiliency improvements. Project Sponsor: Broward MPO | | | | | | | | | |
| PE | 0 | 0 | 0 | 0 | 0 | 0 | 0 | 750,000 | |
| Total | 0 | 0 | 0 | 0 | 0 | 0 | 0 | 750,000 | |
| CITY: HOLLYWOOD | | | | OWNERSHIP: LOCAL | | | Total Project Cost Estimate: | | 750,000 |

PROGRAM THRESHOLD

| Phase | <2022 | 2022 | 2023 | 2024 | 2025 | 2026 | Amount Funded | Funding Needed | | |
|--|---|----------|------------------------------------|------------------|----------------|-------------------------------------|------------------------------|-------------------|------------|------------|
| 30 | SE 2nd St/Hibiscus St/Church St Extension Project from US-1 to Church St - FM# | | | | | | Funding Source: STATE | | | |
| 2021-32 | Type of Work: New Road Construction | | Proposed Study: Feasibility | | LAP: NO | | Yes | Yes | Yes | Yes |
| Conduct multimodal feasibility study. This new facility would relieve traffic off of Hallandale Beach Blvd and accommodate new trips from future committed developments. New Road, for FDOT to construct, the segment would need to be assigned in the Federal Aid System. ROW is a challenge. Project Sponsor: City of Hallandale Beach | | | | | | | | | | |
| PE | 0 | 0 | 0 | 0 | 0 | 0 | 0 | 600,000 | | |
| Total | 0 | 0 | 0 | 0 | 0 | 0 | 0 | 600,000 | | |
| CITY: HALLANDALE BEACH | | | | OWNERSHIP: LOCAL | | Total Project Cost Estimate: | | 600,000 | | |
| 31 | East Orange Dr from SW 67th Ave to SR-7 - FM# | | | | | | Funding Source: STATE | | | |
| 2021-33 | Type of Work: Add center turn lane | | Proposed Study: PD&E | | LAP: NO | | Yes | Yes | Yes | Yes |
| Add center turn lane and lighting improvements. Project may not need PD&E study. Depends on right of way. Project Sponsor: Town of Davie | | | | | | | | | | |
| PE | 0 | 0 | 0 | 0 | 0 | 0 | 0 | 1,245,435 | | |
| ROW | 0 | 0 | 0 | 0 | 0 | 0 | 0 | 5,661,069 | | |
| CST | 0 | 0 | 0 | 0 | 0 | 0 | 0 | 5,661,069 | | |
| Total | 0 | 0 | 0 | 0 | 0 | 0 | 0 | 12,567,573 | | |
| CITY: DAVIE | | | | OWNERSHIP: LOCAL | | Total Project Cost Estimate: | | 12,567,573 | | |
| 32 | Coral Hills Dr from Sample Rd to NW 31st Ct - FM# | | | | | | Funding Source: STATE | | | |
| 2021-34 | Type of Work: Add Lanes & Reconstruct | | Proposed Study: PD&E | | LAP: NO | | Yes | Yes | Yes | Yes |
| Extend left-turn lane on Coral Hills Dr at Sample Rd, widen Coral Hills Dr between Sample Rd and NW 31St to 3-lane cross section including curb and gutter, bike lanes, and new sidewalk on east side. Congestion relief is needed at each of these intersections. Vehicle backup into through lanes and the LOS is failing. Project may not need PD&E study. "Add lanes" are only turn lanes and could go towards LAP. Project Sponsor: City of Coral Springs | | | | | | | | | | |
| PE | 0 | 0 | 0 | 0 | 0 | 0 | 0 | 304,416 | | |
| ROW | 0 | 0 | 0 | 0 | 0 | 0 | 0 | 1,383,708 | | |
| CST | 0 | 0 | 0 | 0 | 0 | 0 | 0 | 1,383,708 | | |
| Total | 0 | 0 | 0 | 0 | 0 | 0 | 0 | 3,071,832 | | |
| CITY: CORAL SPRINGS | | | | OWNERSHIP: LOCAL | | Total Project Cost Estimate: | | 3,071,832 | | |

| Phase | <2022 | 2022 | 2023 | 2024 | 2025 | 2026 | Amount Funded | Funding Needed | | |
|---|---|----------|-----------------------------|-------------------------|----------------|----------|-------------------------------------|-------------------|-------------------|------------|
| 33 | SE 9th St FEC Rail Crossing Realignment from Dixie Hwy to US-1 - FM# | | | | | | Funding Source: STATE | | | |
| 2021-35 | Type of Work: New FEC rail crossing | | Proposed Study: PD&E | | LAP: NO | | Yes | Yes | Yes | No |
| Construct grade separation over railroad crossing. Add EB to NB left-turn lane at US-1. Realigning the FEC rail crossing will help calm traffic in the surrounding single family neighborhoods while also creating a street hierarchy in the system. FEC collaboration has not taken place. Project Sponsor: City of Hallandale Beach | | | | | | | | | | |
| PE | 0 | 0 | 0 | 0 | 0 | 0 | 0 | 188,133 | | |
| ROW | 0 | 0 | 0 | 0 | 0 | 0 | 0 | 855,150 | | |
| CST | 0 | 0 | 0 | 0 | 0 | 0 | 0 | 855,150 | | |
| Total | 0 | 0 | 0 | 0 | 0 | 0 | 0 | 1,898,433 | | |
| CITY: HALLANDALE BEACH | | | | OWNERSHIP: LOCAL | | | Total Project Cost Estimate: | | 1,898,433 | |
| 34 | Pembroke Rd from SW 160th Ave to SW 184th Ave - FM# | | | | | | Funding Source: STATE | | | |
| 2021-36 | Type of Work: Widening | | Proposed Study: PD&E | | LAP: NO | | Yes | Yes | Yes | Yes |
| Widen from 2 to 4 lanes with median, bicycle lanes, sidewalks, lighting, landscaping, hardscape, and irrigation systems. Project Sponsor: City of Miramar | | | | | | | | | | |
| PE | 0 | 0 | 0 | 0 | 0 | 0 | 0 | 3,113,000 | | |
| ROW | 0 | 0 | 0 | 0 | 0 | 0 | 0 | 14,150,000 | | |
| CST | 0 | 0 | 0 | 0 | 0 | 0 | 0 | 14,150,000 | | |
| Total | 0 | 0 | 0 | 0 | 0 | 0 | 0 | 31,413,000 | | |
| CITY: MIRAMAR | | | | OWNERSHIP: LOCAL | | | Total Project Cost Estimate: | | 31,413,000 | |
| 35 | University Dr from Old Club Rd to Loxahatchee Rd - FM# | | | | | | Funding Source: STATE | | | |
| 2021-37 | Type of Work: Widening | | Proposed Study: PD&E | | LAP: NO | | Yes | Yes | Yes | Yes |
| Widen from 2 to 4 lanes with bike lanes and sidewalks. University Drive tapers from a 4-lane divided section to a 2-lane roadway south of Old Club Rd causing traffic congestion and back up delays at crossing intersections. Project Sponsor: City of Parkland | | | | | | | | | | |
| PE | 0 | 0 | 0 | 0 | 0 | 0 | 0 | 2,073,974 | | |
| ROW | 0 | 0 | 0 | 0 | 0 | 0 | 0 | 0 | | |
| CST | 0 | 0 | 0 | 0 | 0 | 0 | 0 | 9,427,156 | | |
| Total | 0 | 0 | 0 | 0 | 0 | 0 | 0 | 11,501,130 | | |
| CITY: PARKLAND | | | | OWNERSHIP: LOCAL | | | Total Project Cost Estimate: | | 11,501,130 | |

| Phase | <2022 | 2022 | 2023 | 2024 | 2025 | 2026 | Amount Funded | Funding Needed | | |
|---|--|----------|----------------------|-------------------|----------|------------------------------|--------------------------------|-------------------|--------------------------|-----|
| 36 | SW 148th Ave from Bass Creek Rd to Miramar Pkwy - FM# | | | | | | Funding Source: FEDERAL | | | |
| 2021-38 | Type of Work: Widening | | Proposed Study: PD&E | | LAP: NO | | Yes | Yes | Yes | Yes |
| Widen from 2 to 4 lanes with median, bicycle lanes, sidewalks, lighting, landscaping, hardscape, and irrigation. Road is at LOS F | | | | | | | MTP Page # 5-18 | | MTP Timeframe: 2031-2035 | |
| Project Sponsor: City of Miramar | | | | | | | | | | |
| PE | 0 | 0 | 0 | 0 | 0 | 0 | 0 | 1,608,153 | | |
| ROW | 0 | 0 | 0 | 0 | 0 | 0 | 0 | 0 | | |
| CST | 0 | 0 | 0 | 0 | 0 | 0 | 0 | 7,309,787 | | |
| Total | 0 | 0 | 0 | 0 | 0 | 0 | 0 | 8,917,940 | | |
| CITY: MIRAMAR | | | | OWNERSHIP: LOCAL | | Total Project Cost Estimate: | | 8,917,940 | | |
| 37 | Miramar Blvd from Flamingo Rd to Hiatus Rd - FM# | | | | | | Funding Source: FEDERAL | | | |
| 2021-39 | Type of Work: Widening | | Proposed Study: PD&E | | LAP: NO | | Yes | Yes | Yes | Yes |
| Widen from 2 to 4 lanes with median, bicycle lanes, sidewalks, lighting, landscaping, hardscape, and irrigation. Connects to 4 lane segment east of Hiatus Road. Project Sponsor: City of Miramar | | | | | | | MTP Page # 5-18 | | MTP Timeframe: 2031-2035 | |
| PE | 0 | 0 | 0 | 0 | 0 | 0 | 0 | 3,559,348 | | |
| ROW | 0 | 0 | 0 | 0 | 0 | 0 | 0 | 0 | | |
| CST | 0 | 0 | 0 | 0 | 0 | 0 | 0 | 16,178,853 | | |
| Total | 0 | 0 | 0 | 0 | 0 | 0 | 0 | 19,738,201 | | |
| CITY: MIRAMAR | | | | OWNERSHIP: LOCAL | | Total Project Cost Estimate: | | 19,738,201 | | |
| 38 | Sheridan St from 196th Ave to US-27 - FM# | | | | | | Funding Source: STATE | | | |
| 2021-40 | Type of Work: Widening | | Proposed Study: PD&E | | LAP: NO | | Yes | Yes | Yes | Yes |
| Widen from 2 to 4 lanes (includes sidewalk on one side). Project Sponsor: City of Pembroke Pines | | | | | | | MTP Page # 5-18 | | MTP Timeframe: 2031-2035 | |
| PE | 0 | 0 | 0 | 0 | 0 | 0 | 0 | 2,387,088 | | |
| ROW | 0 | 0 | 0 | 0 | 0 | 0 | 0 | 0 | | |
| CST | 0 | 0 | 0 | 0 | 0 | 0 | 0 | 10,850,401 | | |
| Total | 0 | 0 | 0 | 0 | 0 | 0 | 0 | 13,237,489 | | |
| CITY: PEMBROKE PINES | | | | OWNERSHIP: COUNTY | | Total Project Cost Estimate: | | 13,237,489 | | |

| Phase | <2022 | 2022 | 2023 | 2024 | 2025 | 2026 | Amount Funded | Funding Needed | |
|--|---------------------------------------|--|-------------------|----------|----------|--|--|-------------------|--|
| 39 | Priority | Ravenswood Rd from SW 42nd St to Griffin Rd - FM# | | | | | Funding Source: STATE | | |
| 2021-41 | Type of Work: Widening | Proposed Study: PD&E | | | LAP: NO | Yes Yes Yes Yes | MTP Page # 5-18 MTP Timeframe: 2031-2035 | | |
| Widen from 2 to 4 lanes. Project Sponsor: Broward MPO | | | | | | | | | |
| PE | 0 | 0 | 0 | 0 | 0 | 0 | 0 | 814,000 | |
| ROW | 0 | 0 | 0 | 0 | 0 | 0 | 0 | 3,700,000 | |
| CST | 0 | 0 | 0 | 0 | 0 | 0 | 0 | 3,700,000 | |
| Total | 0 | 0 | 0 | 0 | 0 | 0 | 0 | 8,214,000 | |
| CITY: DANIA BEACH | | | OWNERSHIP: COUNTY | | | Total Project Cost Estimate: 8,214,000 | | | |
| 40 | Priority | Wiles Rd from Florida's Turnpike to Powerline Rd - FM# | | | | | Funding Source: FEDERAL | | |
| 2021-42 | Type of Work: Widening | Proposed Study: PD&E | | | LAP: NO | Yes Yes Yes Yes | MTP Page # 5-18 MTP Timeframe: 2031-2035 | | |
| Widen from 4 to 6 lanes. Project Sponsor: Broward MPO | | | | | | | | | |
| PE | 0 | 0 | 0 | 0 | 0 | 0 | 0 | 1,474,000 | |
| ROW | 0 | 0 | 0 | 0 | 0 | 0 | 0 | 6,700,000 | |
| CST | 0 | 0 | 0 | 0 | 0 | 0 | 0 | 6,700,000 | |
| Total | 0 | 0 | 0 | 0 | 0 | 0 | 0 | 14,874,000 | |
| CITY: DEERFIELD BEACH | | | OWNERSHIP: COUNTY | | | Total Project Cost Estimate: 14,874,000 | | | |
| 41 | Priority | Rock Island Rd from McNab Rd to Commercial Blvd - FM# | | | | | Funding Source: FEDERAL | | |
| 2021-43 | Type of Work: Add Lanes & Reconstruct | Proposed Study: PD&E | | | LAP: NO | Yes Yes Yes Yes | MTP Page # 5-18 MTP Timeframe: 2031-2035 | | |
| Widen from 4 to 6 lanes with buffered bike lanes. Project Sponsor: City of Tamarac | | | | | | | | | |
| PE | 0 | 0 | 0 | 0 | 0 | 0 | 0 | 676,059 | |
| ROW | 0 | 0 | 0 | 0 | 0 | 0 | 0 | 3,072,997 | |
| CST | 0 | 0 | 0 | 0 | 0 | 0 | 0 | 3,072,997 | |
| Total | 0 | 0 | 0 | 0 | 0 | 0 | 0 | 6,822,053 | |
| CITY: TAMARAC | | | OWNERSHIP: LOCAL | | | Total Project Cost Estimate: 6,822,053 | | | |

| Phase | <2022 | 2022 | 2023 | 2024 | 2025 | 2026 | Amount Funded | Funding Needed | |
|---|---------------|---|----------|------------------|----------|------------------------------|------------------------------|--|--|
| 42 | Priority | South Florida Rail Corridor @ Sample Rd/SR-834 - FM# | | | | | Funding Source: STATE | | |
| 2021-44 | Type of Work: | Grade separation | | Proposed Study: | PD&E | LAP: | NO | Yes Yes Yes Yes | |
| Construct grade separation at railroad crossing. Project Sponsor: Broward MPO | | | | | | | MTP Page # 5-19 | MTP Timeframe: 2036-2045 | |
| PE | 0 | 0 | 0 | 0 | 0 | 0 | 0 | 5,198,600 | |
| ROW | 0 | 0 | 0 | 0 | 0 | 0 | 0 | 23,630,000 | |
| CST | 0 | 0 | 0 | 0 | 0 | 0 | 0 | 23,630,000 | |
| Total | 0 | 0 | 0 | 0 | 0 | 0 | 0 | 52,458,600 | |
| CITY: POMPANO BEACH | | | | OWNERSHIP: STATE | | Total Project Cost Estimate: | | 52,458,600 | |
| 43 | Priority | FEC Rail Corridor @ Sample Rd/SR-834 - FM# | | | | | Funding Source: STATE | | |
| 2021-45 | Type of Work: | Grade separation | | Proposed Study: | PD&E | LAP: | NO | Yes Yes Yes Yes | |
| Construct grade separation at railroad crossing. Project Sponsor: Broward MPO | | | | | | | MTP Page # 5-19 | MTP Timeframe: 2036-2045 | |
| PE | 0 | 0 | 0 | 0 | 0 | 0 | 0 | 5,198,600 | |
| ROW | 0 | 0 | 0 | 0 | 0 | 0 | 0 | 23,630,000 | |
| CST | 0 | 0 | 0 | 0 | 0 | 0 | 0 | 23,630,000 | |
| Total | 0 | 0 | 0 | 0 | 0 | 0 | 0 | 52,458,600 | |
| CITY: POMPANO BEACH | | | | OWNERSHIP: STATE | | Total Project Cost Estimate: | | 52,458,600 | |
| 44 | Priority | FEC Rail Corridor @ Commercial Blvd/SR-870 - FM# | | | | | Funding Source: STATE | | |
| 2021-46 | Type of Work: | Grade separation | | Proposed Study: | PD&E | LAP: | NO | Yes Yes Yes Yes | |
| Construct grade separation at railroad crossing. Project Sponsor: Broward MPO | | | | | | | MTP Page # 5-19 | MTP Timeframe: 2036-2045 | |
| PE | 0 | 0 | 0 | 0 | 0 | 0 | 0 | 5,198,600 | |
| ROW | 0 | 0 | 0 | 0 | 0 | 0 | 0 | 23,630,000 | |
| CST | 0 | 0 | 0 | 0 | 0 | 0 | 0 | 23,630,000 | |
| Total | 0 | 0 | 0 | 0 | 0 | 0 | 0 | 52,458,600 | |
| CITY: OAKLAND PARK | | | | OWNERSHIP: STATE | | Total Project Cost Estimate: | | 52,458,600 | |

| Phase | <2022 | 2022 | 2023 | 2024 | 2025 | 2026 | Amount Funded | Funding Needed | | |
|--|--|----------|-----------------------------|----------------|------------------|-------------------------------------|------------------------------|--------------------------|------------|------------|
| 45 | Atlantic Blvd @ Powerline Rd - FM# | | | | | | Funding Source: STATE | | | |
| 2021-47 | Type of Work: Intersection improvements | | Proposed Study: PD&E | | LAP: NO | | Yes | Yes | Yes | Yes |
| Construct center turn overpass. Relieve congestion from left turns. Project Sponsor: Broward MPO | | | | | | | MTP Page # 5-19 | MTP Timeframe: 2036-2045 | | |
| PE | 0 | 0 | 0 | 0 | 0 | 0 | 0 | 9,900,000 | | |
| ROW | 0 | 0 | 0 | 0 | 0 | 0 | 0 | 45,000,000 | | |
| CST | 0 | 0 | 0 | 0 | 0 | 0 | 0 | 45,000,000 | | |
| Total | 0 | 0 | 0 | 0 | 0 | 0 | 0 | 99,900,000 | | |
| CITY: POMPANO BEACH | | | OWNERSHIP: STATE | | | Total Project Cost Estimate: | | 99,900,000 | | |
| 46 | SR-820/PINES BLVD. @ SR-817/UNIVERSITY DR - FM# 4465871 | | | | | | Funding Source: STATE | | | |
| 2021-48 | Type of Work: PD&E/EMO STUDY | | Proposed Study: PD&E | | LAP: NO | | Yes | Yes | Yes | Yes |
| 2021 MPO PRIORITY #48 IS R/W NEEDED | | | | | | | MTP Page # 5-19 | MTP Timeframe: 2036-2045 | | |
| PDE | 0 | 0 | 610,000 | 500,000 | 1,500,000 | 0 | 2,610,000 | 0 | | |
| PE | 0 | 0 | 0 | 0 | 0 | 2,010,000 | 2,010,000 | 0 | | |
| PE | 0 | 0 | 0 | 0 | 0 | 0 | 0 | 5,280,000 | | |
| ROW | 0 | 0 | 0 | 0 | 0 | 0 | 0 | 45,000,000 | | |
| CST | 0 | 0 | 0 | 0 | 0 | 0 | 0 | 45,000,000 | | |
| Total | 0 | 0 | 610,000 | 500,000 | 1,500,000 | 2,010,000 | 4,620,000 | 95,280,000 | | |
| CITY: PEMBROKE PINES | | | OWNERSHIP: STATE | | | Total Project Cost Estimate: | | 99,900,000 | | |
| 47 | Hallandale Beach Blvd Bypass from Dixie Highway to US-1 - FM# | | | | | | Funding Source: STATE | | | |
| 2021-49 | Type of Work: Add Lanes & Reconstruct | | Proposed Study: PD&E | | LAP: NO | | Yes | Yes | Yes | Yes |
| Add EB to NB left-turn lane at US-1. Project Sponsor: City of Hallandale Beach | | | | | | | MTP Page # 5-19 | MTP Timeframe: 2036-2045 | | |
| PE | 0 | 0 | 0 | 0 | 0 | 0 | 0 | 12,893,760 | | |
| ROW | 0 | 0 | 0 | 0 | 0 | 0 | 0 | 0 | | |
| CST | 0 | 0 | 0 | 0 | 0 | 0 | 0 | 58,608,000 | | |
| Total | 0 | 0 | 0 | 0 | 0 | 0 | 0 | 71,501,760 | | |
| CITY: HALLANDALE BEACH | | | OWNERSHIP: STATE | | | Total Project Cost Estimate: | | 71,501,760 | | |

| Phase | <2022 | 2022 | 2023 | 2024 | 2025 | 2026 | Amount Funded | Funding Needed | |
|---|--------------------------------|--|----------|-------------------|----------|------------------------------|------------------------------|--------------------------|-----|
| 48 | Priority | South Florida Rail Corridor @ Atlantic Blvd/SR-814 - FM# | | | | | Funding Source: STATE | | |
| 2021-50 | Type of Work: Grade Separation | Proposed Study: PD&E | | | LAP: NO | Yes | Yes | Yes | Yes |
| Construct grade separation at railroad crossing. Project Sponsor: Broward MPO | | | | | | | MTP Page # 5-19 | MTP Timeframe: 2036-2045 | |
| PE | 0 | 0 | 0 | 0 | 0 | 0 | 0 | 5,198,600 | |
| ROW | 0 | 0 | 0 | 0 | 0 | 0 | 0 | 23,630,000 | |
| CST | 0 | 0 | 0 | 0 | 0 | 0 | 0 | 23,630,000 | |
| Total | 0 | 0 | 0 | 0 | 0 | 0 | 0 | 52,458,600 | |
| CITY: POMPANO BEACH | | | | OWNERSHIP: STATE | | Total Project Cost Estimate: | | 52,458,600 | |
| 49 | Priority | South Florida Rail Corridor @ NW 62nd/Cypress Creek - FM# | | | | | Funding Source: STATE | | |
| 2021-51 | Type of Work: Grade Separation | Proposed Study: PD&E | | | LAP: NO | Yes | Yes | Yes | Yes |
| Construct grade separation at railroad crossing. Project Sponsor: Broward MPO | | | | | | | MTP Page # 5-19 | MTP Timeframe: 2036-2045 | |
| PE | 0 | 0 | 0 | 0 | 0 | 0 | 0 | 5,198,600 | |
| ROW | 0 | 0 | 0 | 0 | 0 | 0 | 0 | 23,630,000 | |
| CST | 0 | 0 | 0 | 0 | 0 | 0 | 0 | 23,630,000 | |
| Total | 0 | 0 | 0 | 0 | 0 | 0 | 0 | 52,458,600 | |
| CITY: FORT LAUDERDALE | | | | OWNERSHIP: COUNTY | | Total Project Cost Estimate: | | 52,458,600 | |
| 50 | Priority | SW 196th Ave from Pines Blvd to Miramar Pkwy - FM# | | | | | Funding Source: STATE | | |
| 2021-52 | Type of Work: Widening | Proposed Study: PD&E | | | LAP: NO | Yes | Yes | Yes | Yes |
| Widen from 2 to 4 lanes. Project Sponsor: Broward MPO | | | | | | | MTP Page # 5-20 | MTP Timeframe: 2036-2045 | |
| PE | 0 | 0 | 0 | 0 | 0 | 0 | 0 | 4,201,855 | |
| ROW | 0 | 0 | 0 | 0 | 0 | 0 | 0 | 19,099,340 | |
| CST | 0 | 0 | 0 | 0 | 0 | 0 | 0 | 19,099,340 | |
| Total | 0 | 0 | 0 | 0 | 0 | 0 | 0 | 42,400,535 | |
| CITY: MIRAMAR | | | | OWNERSHIP: LOCAL | | Total Project Cost Estimate: | | 42,400,535 | |

| Phase | <2022 | 2022 | 2023 | 2024 | 2025 | 2026 | Amount Funded | Funding Needed | |
|----------------------------------|--|----------|----------|-------------------|----------|----------|--|-------------------|------------|
| 51 Priority 2021-53 | Griffin Rd from Bonaventure Blvd to US-27 - FM# Type of Work: Add Lanes & Reconstruct Proposed Study: PD&E LAP: NO | | | | | | Funding Source: STATE Yes Yes Yes Yes MTP Page # 5-20 MTP Timeframe: 2036-2045 | | |
| | Widen Griffin Rd from 2 to 4 lanes (include new bike lanes, install solar lighting from I-75 to US-27). Project Sponsor: Town of Southwest Ranches | | | | | | | | |
| PE | 0 | 0 | 0 | 0 | 0 | 0 | 0 | 3,938,963 | |
| ROW | 0 | 0 | 0 | 0 | 0 | 0 | 0 | 0 | |
| CST | 0 | 0 | 0 | 0 | 0 | 0 | 0 | 17,904,375 | |
| Total | 0 | 0 | 0 | 0 | 0 | 0 | 0 | 21,843,338 | |
| CITY: SOUTHWEST RANCHES | | | | OWNERSHIP: COUNTY | | | Total Project Cost Estimate: | | 21,843,338 |

SYSTEMS MANAGEMENT /SAFETY PROGRAM



LEGEND:

 PRIORITIZED
SYSTEMS
MANAGEMENT/
SAFETY PROJECTS



| Phase | <2022 | 2022 | 2023 | 2024 | 2025 | 2026 | Amount Funded | Funding Needed |
|---|---|----------|-------------------------|---------------|----------------|------------------------------|--|-------------------|
| 01 2021-03 | Priority MOVABLE BRIDGE INTEGRATION INTO TSM&O - VARIOUS LOCATIONS - FM# 4441201 Type of Work: PRELIMINARY ENGINEERING Proposed Study: N/A LAP: No | | | | | | Funding Source: STATE Yes Yes Yes Yes | |
| 2021 MPO TSM&O/SAFETY PRIORITY# 3 SR-736/DAVIE BLVD BRIDGE; A1A/17TH ST BRIDGE; LAS OLAS BRIDGE; SR-816/SUNRISE BLVD BRIDGE; 32-01=CON OPS 32-02=DESIGN; 32-03=POST ASSESSMENT NO R/W NEEDED MTP Page # 5-3 MTP Timeframe: | | | | | | | | |
| P.E. | 0 | 0 | 732,319 | 47,416 | 690,997 | 0 | 1,470,732 | 0 |
| CST | 0 | 0 | 0 | 0 | 0 | 0 | 0 | 4,376,485 |
| Total | 0 | 0 | 732,319 | 47,416 | 690,997 | 0 | 1,470,732 | 4,376,485 |
| CITY: FORT LAUDERDALE | | | OWNERSHIP: STATE | | | Total Project Cost Estimate: | | 5,847,217 |
| 02 2021-04 | Priority SR-816/Oakland Park Blvd @ SR-7/US-4417 - FM# Type of Work: Safety Study Proposed Study: Safety LAP: No | | | | | | Funding Source: STATE Yes N/A Yes Yes | |
| Total severity factor: 1143 Lighting Improvement is included in 4475461. MTP Page # 5-30 MTP Timeframe: | | | | | | | | |
| PLN | 0 | 0 | 0 | 0 | 0 | 0 | 0 | 250,000 |
| Total | 0 | 0 | 0 | 0 | 0 | 0 | 0 | 250,000 |
| CITY: LAUDERDALE LAKES | | | OWNERSHIP: STATE | | | Total Project Cost Estimate: | | 250,000 |
| 03 2021-05 | Priority NW 19th St @ NW 31st Ave - FM# Type of Work: Safety Study Proposed Study: Safety LAP: | | | | | | Funding Source: STATE Yes N/A Yes Yes | |
| Total severity factor: 814.5. MPO to manage. MTP Page # 5-30 MTP Timeframe: | | | | | | | | |
| PLN | 0 | 0 | 0 | 0 | 0 | 0 | 0 | 200,000 |
| Total | 0 | 0 | 0 | 0 | 0 | 0 | 0 | 200,000 |
| CITY: FORT LAUDERDALE | | | OWNERSHIP: COUNTY | | | Total Project Cost Estimate: | | 200,000 |
| 04 2021-06 | Priority N University Dr @ Wiles Rd - FM# Type of Work: Safety Study Proposed Study: Safety LAP: | | | | | | Funding Source: STATE Yes N/A Yes Yes | |
| Total severity factor: 734. MPO to manage. MTP Page # 5-30 MTP Timeframe: | | | | | | | | |
| PLN | 0 | 0 | 0 | 0 | 0 | 0 | 0 | 200,000 |
| Total | 0 | 0 | 0 | 0 | 0 | 0 | 0 | 200,000 |
| CITY: CORAL SPRINGS | | | OWNERSHIP: COUNTY/LOCAL | | | Total Project Cost Estimate: | | 200,000 |

| Phase | <2022 | 2022 | 2023 | 2024 | 2025 | 2026 | Amount Funded | Funding Needed | | |
|---|---|----------|--------------------------------|----------|----------------|---|------------------------------|--------------------|----------------|------------|
| 05 Priority | FDOT Signal System - FM# | | | | | | Funding Source: STATE | | | |
| 2021-07 | Type of Work: Signal System Improvements | | Proposed Study: N/A | | LAP: No | | Yes | Yes | Yes | Yes |
| \$169,227,273 is set aside for on-system traffic signal improvements during the 2045 MPT planning horizon. FDOT carries over project to support TSM&O projects. | | | | | | | MTP Page # 5-30 | | MTP Timeframe: | |
| ENV,PE,CST | 0 | 0 | 0 | 0 | 0 | 0 | 0 | 100,000,000 | | |
| Total | 0 | 0 | 0 | 0 | 0 | 0 | 0 | 100,000,000 | | |
| CITY: VARIOUS | | | OWNERSHIP: STATE | | | Total Project Cost Estimate: 100,000,000 | | | | |
| 06 Priority | SR-817/UNIVERSITY DR from BRIDGE NORTH OF SOUTHGATE BLVD to SR-834/SAMPLE RD - FM# | | | | | | Funding Source: STATE | | | |
| 2021-New | Type of Work: Safety Study | | Proposed Study: Safety | | LAP: No | | Yes | N/A | Yes | N/A |
| Ranked #1 on on-system corridor category in Tindale Oliver's crash analysis. Severity index per mile of 471.833 Project Sponsor: Broward MPO | | | | | | | MTP Page # 5-30 | | MTP Timeframe: | |
| PLN | 0 | 0 | 0 | 0 | 0 | 0 | 0 | 250,000 | | |
| Total | 0 | 0 | 0 | 0 | 0 | 0 | 0 | 250,000 | | |
| CITY: CORAL SPRINGS | | | OWNERSHIP: STATE | | | Total Project Cost Estimate: 250,000 | | | | |
| 07 Priority | SR-834/SAMPLE RD from SR-817/University Dr to US 441/SR-7 - FM# | | | | | | Funding Source: STATE | | | |
| 2021-New | Type of Work: Safety Study | | Proposed Study: Safety | | LAP: No | | Yes | N/A | Yes | N/A |
| Ranked #2 for on-system corridors in Tindale-Oliver's crash analysis. Severity index per mile of 433.833. Has highest number of severe injuries in category. Project Sponsor: Broward MPO | | | | | | | MTP Page # 5-30 | | MTP Timeframe: | |
| PLN | 0 | 0 | 0 | 0 | 0 | 0 | 0 | 250,000 | | |
| Total | 0 | 0 | 0 | 0 | 0 | 0 | 0 | 250,000 | | |
| CITY: CORAL SPRINGS | | | OWNERSHIP: STATE | | | Total Project Cost Estimate: 250,000 | | | | |
| 08 Priority | W OAKLAND PARK BLVD from WELLEBY PLAZA PUBLIX ENTRANCE to N NOB HILL RD (County Roadway) - FM# | | | | | | Funding Source: STATE | | | |
| 2021-New | Type of Work: Safety Study | | Proposed Study: Safety | | LAP: | | Yes | N/A | Yes | N/A |
| Ranked #2 on off-system corridor category in Tindale Oliver crash analysis. Severity index per mile - 281.48. Project Sponsor: Broward MPO | | | | | | | MTP Page # 5-30 | | MTP Timeframe: | |
| PLN | 0 | 0 | 0 | 0 | 0 | 0 | 0 | 250,000 | | |
| Total | 0 | 0 | 0 | 0 | 0 | 0 | 0 | 250,000 | | |
| CITY: SUNRISE | | | OWNERSHIP: COUNTY/LOCAL | | | Total Project Cost Estimate: 250,000 | | | | |

| | | |
|-----------------------|-------------------------|-------------------------|
| State Funds | Federal Funds | Local Funds |
| State and Local Funds | State and Federal Funds | Federal and Local Funds |

| Phase | <2022 | 2022 | 2023 | 2024 | 2025 | 2026 | Amount Funded | Funding Needed | |
|--|---|----------|-------------------|----------|----------|------------------------------|--|-------------------|--|
| 09 Priority 2021-New | Pines Blvd and NW 124th Ave (N Flamingo Dr) - FM# Type of Work: Safety Study Proposed Study: Safety LAP: No | | | | | | Funding Source: STATE Yes N/A Yes N/A MTP Page # 5-30 MTP Timeframe: | | |
| Ranked #2 for on-system signalized intersections. Crash severity index of 1086.5 Project Sponsor: Broward MPO | | | | | | | | | |
| PLN | 0 | 0 | 0 | 0 | 0 | 0 | 0 | 250,000 | |
| Total | 0 | 0 | 0 | 0 | 0 | 0 | 0 | 250,000 | |
| CITY: PEMBROKE PINES | | | OWNERSHIP: STATE | | | Total Project Cost Estimate: | | 250,000 | |
| 10 Priority 2021-New | SW 13th PL and S. University Dr. - FM# Type of Work: Safety Study Proposed Study: Safety LAP: No | | | | | | Funding Source: STATE Yes N/A Yes N/A MTP Page # 5-30 MTP Timeframe: | | |
| Ranked #2 for on-system unsignalized intersections in Tindale Oliver's crash analysis. Crash severity index of 305.5 Project Sponsor: Broward MPO | | | | | | | | | |
| PLN | 0 | 0 | 0 | 0 | 0 | 0 | 0 | 250,000 | |
| Total | 0 | 0 | 0 | 0 | 0 | 0 | 0 | 250,000 | |
| CITY: PLANTATION | | | OWNERSHIP: STATE | | | Total Project Cost Estimate: | | 250,000 | |
| 11 Priority 2021-New | NW 89th Dr and Royal Palm Blvd intersection - FM# Type of Work: Safety Study Proposed Study: Safety LAP: | | | | | | Funding Source: STATE Yes N/A Yes N/A MTP Page # 5-30 MTP Timeframe: | | |
| Ranked #4 on off-system unsignalized intersection category. Severity index - 129. Has the most serious injuries out of entire Tindale-Oliver list in this category (12) Project Sponsor: Broward MPO | | | | | | | | | |
| PLN | 0 | 0 | 0 | 0 | 0 | 0 | 0 | 250,000 | |
| Total | 0 | 0 | 0 | 0 | 0 | 0 | 0 | 250,000 | |
| CITY: CORAL SPRINGS | | | OWNERSHIP: LOCAL | | | Total Project Cost Estimate: | | 250,000 | |
| 12 Priority 2021-New | CORAL RIDGE DR from SOUTH OF NW 30TH ST to HERON BAY BLVD (County Road) - FM# Type of Work: Safety Study Proposed Study: Safety LAP: | | | | | | Funding Source: STATE Yes N/A Yes N/A MTP Page # 5-30 MTP Timeframe: | | |
| Ranked #5 on off-system corridor category in Tindale Oliver crash analysis. Severity index per mile - 155.1666 Highest Crash Severity Index of off-system corridors. Has the most incapacitating crashes and the most severe injuries in category Project Sponsor: Broward MPO | | | | | | | | | |
| PLN | 0 | 0 | 0 | 0 | 0 | 0 | 0 | 250,000 | |
| Total | 0 | 0 | 0 | 0 | 0 | 0 | 0 | 250,000 | |
| CITY: CORAL SPRINGS | | | OWNERSHIP: COUNTY | | | Total Project Cost Estimate: | | 250,000 | |

| Phase | <2022 | 2022 | 2023 | 2024 | 2025 | 2026 | Amount Funded | Funding Needed | | |
|--|--|----------|------------------------|-------------------------|----------|----------|--------------------------------------|-------------------|----------------|-----|
| 13 Priority | Riverside Dr. (County Roadway) and Royal Palm Blvd intersection - FM# | | | | | | Funding Source: STATE | | | |
| 2021-New | Type of Work: Safety Study | | Proposed Study: Safety | | | LAP: | Yes | N/A | Yes | N/A |
| Ranked #7 in off-system signalized intersection category in Tindale Oliver crash analysis. Severity total - 510.5. 2nd highest number of incapacitating injuries (20) for off-system signalized intersections Project Sponsor: Broward MPO | | | | | | | MTP Page # 5-30 | | MTP Timeframe: | |
| PLN | 0 | 0 | 0 | 0 | 0 | 0 | 0 | 250,000 | | |
| Total | 0 | 0 | 0 | 0 | 0 | 0 | 0 | 250,000 | | |
| CITY: CORAL SPRINGS | | | | OWNERSHIP: COUNTY/LOCAL | | | Total Project Cost Estimate: 250,000 | | | |
| 14 Priority | Davie Road Ext (County Roadway) and NW 78th Ave intersection - FM# | | | | | | Funding Source: STATE | | | |
| 2021-New | Type of Work: Safety Study | | Proposed Study: Safety | | | LAP: | Yes | N/A | Yes | N/A |
| Ranked #13 for off-system unsignalized intersection category in Tindale Oliver's crash analysis. Severity total of 109. Has the most injuries (22) in category Project Sponsor: Broward MPO | | | | | | | MTP Page # 5-30 | | MTP Timeframe: | |
| PLN | 0 | 0 | 0 | 0 | 0 | 0 | 0 | 250,000 | | |
| Total | 0 | 0 | 0 | 0 | 0 | 0 | 0 | 250,000 | | |
| CITY: HOLLYWOOD | | | | OWNERSHIP: COUNTY/LOCAL | | | Total Project Cost Estimate: 250,000 | | | |
| 15 Priority | Safety Improvement- Off System - FM# | | | | | | Funding Source: STATE | | | |
| 2021-New | Type of Work: Safety Improvement | | Proposed Study: N/A | | | LAP: | Yes | N/A | Yes | N/A |
| * Allocate \$200,000 of CARES funds to FY 2023 for Design. Allocate \$200,000 of CARES funds to FY 2024 for Design. | | | | | | | MTP Page # 5-30 | | MTP Timeframe: | |
| PE-CARES* | 0 | 0 | 0 | 0 | 0 | 0 | 0 | 400,000 | | |
| Total | 0 | 0 | 0 | 0 | 0 | 0 | 0 | 400,000 | | |
| CITY: OFF SYSTEM | | | | OWNERSHIP: COUNTY/LOCAL | | | Total Project Cost Estimate: 400,000 | | | |

| Phase | <2022 | 2022 | 2023 | 2024 | 2025 | 2026 | Amount Funded | Funding Needed |
|--|--|---------------|---------------------|-------------------------|----------|-------------------------------------|--|-------------------|
| 16 | SR-869/SW 10TH STREET CONNECTOR TSM&O SMART WORK ZONE - FM# 4398915 | | | | | | Funding Source: STATE | |
| 2021-New | Type of Work: ITS COMMUNICATION SYSTEM | | Proposed Study: N/A | | LAP: No | | Yes N/A Yes N/A | |
| INCLUDES SEVEN (7) CORRIDORS: SR-5/US-1 & SR-811/DIXIE HWY & MILITARY TR & SR-845/ POWERLINE RD FROM SR-810/HILLSBORO BLVD TO SR-834 SAMPLE RD; SR-810 HILLSBORO BLVD FROM SR-845 POWERLINE RD TO SR-5/US 1; NE 48TH ST FROM SR-845/ POWERLINE RD TO SR-811/DIXIE HWY;SR-834/SAMPLE RD FROM SR-845/POWERLINE RD TO SR-5/US-1 \$800,000 DITS FUNDS APPROVAL FOR 52-02; EMAIL APPROVAL DATED 10/6/20; PENDING SIS DETERMINATIONS 2021 MPO HIGHWAY PRIORITY #1. | | | | | | | | |
| *Replace \$2,395,589 of CARES funds for FY 2023 for Construction. | | | | | | | | |
| CEI | 0 | 0 | 2,761,480 | 0 | 0 | 0 | 2,761,480 | 0 |
| Construction | 0 | 0 | 14,990,011 | 50,000 | 0 | 0 | 14,746,362 | 0 |
| CST-CARES* | 0 | 0 | 0 | 0 | 0 | 0 | 0 | 0 |
| Incentive | 0 | 0 | 0 | 243,000 | 0 | 0 | 243,000 | 0 |
| P.E. | 0 | 20,000 | 510,000 | 0 | 0 | 0 | 530,000 | 0 |
| Total | 0 | 20,000 | 18,261,491 | 293,000 | 0 | 0 | 18,574,491 | 0 |
| CITY: DEERFIELD BEACH | | | | OWNERSHIP: STATE | | Total Project Cost Estimate: | | 20,970,080 |

| | | |
|-----------------------|-------------------------|-------------------------|
| State Funds | Federal Funds | Local Funds |
| State and Local Funds | State and Federal Funds | Federal and Local Funds |

TRANSIT PROGRAM



LEGEND:
 PRIORITIZED TRANSIT PROJECTS



| Phase | <2022 | 2022 | 2023 | 2024 | 2025 | 2026 | Amount Funded | Funding Needed | | |
|--|---|----------|-----------------------------|----------|----------|--|--|--------------------|--------------------------|----|
| 01 | Andrews & 3rd Avenues Mobility Improvements SE 17th Street to Sunrise Blvd - FM# | | | | | | Funding Source: FEDERAL AND LOCAL | | | |
| 2021-01 | Type of Work: Feasibility Study | | Proposed Study: Feasibility | | LAP: No | | Yes | No | Yes | No |
| Reconfigure streets to be oneway oriented, with shared use path, transit-only lane, lighting, stormwater, transit, crosswalks. Potential Surtax project. Project remains on MMPL to supplement funds. Coordination is still under way. Project Sponsor: City of Fort Lauderdale | | | | | | | MTP Page # 5-29 | | MTP Timeframe: 2026-2030 | |
| PE | 0 | 0 | 0 | 0 | 0 | 0 | 0 | 10,000,000 | | |
| Total | 0 | 0 | 0 | 0 | 0 | 0 | 0 | 10,000,000 | | |
| CITY: FORT LAUDERDALE | | | OWNERSHIP: COUNTY | | | Total Project Cost Estimate: 10,000,000 | | | | |
| 02 | Hollywood/Pines Blvd. Rapid Bus from Flamingo Rd. (Pembroke Pines) to Hollywood (Young Circle) - FM# | | | | | | Funding Source: STATE AND LOCAL | | | |
| 2021-02 | Type of Work: Transit Improvement | | Proposed Study: N/A | | LAP: No | | Yes | Yes | Yes | No |
| Implement 10-15 min limited stop bus service, mixed traffic or semiexclusive Business Access and Transit (BAT) lanes, level boarding stations, use of Transit Signal Priority (TSP)/Queue Jump technologies, mobile ticketing. County is seeking federal funds and need to finalize components and coordination. Project Sponsor: Broward County | | | | | | | MTP Page # 5-29 | | MTP Timeframe: 2026-2030 | |
| PE | 0 | 0 | 0 | 0 | 0 | 0 | 0 | 3,074,180 | | |
| CST | 0 | 0 | 0 | 0 | 0 | 0 | 0 | 61,483,599 | | |
| Total | 0 | 0 | 0 | 0 | 0 | 0 | 0 | 64,557,779 | | |
| CITY: HOLLYWOOD/PEMBROKE PINES | | | OWNERSHIP: STATE | | | Total Project Cost Estimate: 64,557,779 | | | | |
| 03 | University Dr Rapid Bus from Coconut Creek (Sample Rd) to MiamiDade Co (Golden Glades) - FM# | | | | | | Funding Source: STATE AND LOCAL | | | |
| 2021-03 | Type of Work: Transit Improvement | | Proposed Study: N/A | | LAP: No | | Yes | Yes | Yes | No |
| Implement 10-15 min limited stop bus service, mixed traffic or semiexclusive Business Access and Transit (BAT) lanes, level boarding stations, use of Transit Signal Priority (TSP)/Queue Jump technologies, mobile ticketing. County is seeking federal funds and need to finalize components and coordination. Project Sponsor: Broward County | | | | | | | MTP Page # 5-29 | | MTP Timeframe: 2031-2035 | |
| PE | 0 | 0 | 0 | 0 | 0 | 0 | 0 | 5,509,339 | | |
| CST | 0 | 0 | 0 | 0 | 0 | 0 | 0 | 110,186,775 | | |
| Total | 0 | 0 | 0 | 0 | 0 | 0 | 0 | 115,696,114 | | |
| CITY: CORAL SPRINGS/COOPER | | | OWNERSHIP: STATE | | | Total Project Cost Estimate: 115,696,114 | | | | |
| CITY/DAVIE/LAUDERHILL/MIRAMAR/PLANTATION/PEMBROKE PINES/TAMARAC/SUNRISE | | | | | | | | | | |

| Phase | <2022 | 2022 | 2023 | 2024 | 2025 | 2026 | Amount Funded | Funding Needed | | |
|---|--|----------|---------------------|------------------|----------|------------------|--------------------------------|--------------------------|------------|-----|
| 04 | ROLLING STOCK - FM# 4481021 | | | | | | Funding Source: FEDERAL | | | |
| 2021-04 | Type of Work: PURCHASE VEHICLES/EQUIPMENT | | Proposed Study: N/A | | | LAP: No | Yes | Yes | Yes | Yes |
| 2021 TRIP SEFTC #7; 2021 MPO TRANSIT PRIORITY # 4 FLEX TO SFRTA; JPA WITH SFRTA | | | | | | | MTP Page # 5-29 | MTP Timeframe: 2036-2045 | | |
| Cap Impro/Ope | 0 | 0 | 0 | 0 | 0 | 5,000,000 | 5,000,000 | 19,333,333 | | |
| Total | 0 | 0 | 0 | 0 | 0 | 5,000,000 | 5,000,000 | 19,333,333 | | |
| CITY: SFRTA | | | | OWNERSHIP: SFRTA | | | Total Project Cost Estimate: | | 24,333,333 | |
| 05 | Tri-Rail Mobile Ticketing and Fare Verification - FM# | | | | | | Funding Source: FEDERAL | | | |
| 2021-05 | Type of Work: Transit Improvement | | Proposed Study: N/A | | | LAP: No | Yes | Yes | Yes | Yes |
| Fund Mobile Ticketing and Fare Verification Equipment. As any available funds are allocated to this project, we suggest they be flexed to FTA under the SFRTA account. Project Sponsor: SFRTA | | | | | | | MTP Page # 5-29 | MTP Timeframe: 2036-2045 | | |
| PE | 0 | 0 | 0 | 0 | 0 | 0 | 0 | 125,000 | | |
| CST | 0 | 0 | 0 | 0 | 0 | 0 | 0 | 2,500,000 | | |
| Total | 0 | 0 | 0 | 0 | 0 | 0 | 0 | 2,625,000 | | |
| CITY: SFRTA | | | | OWNERSHIP: SFRTA | | | Total Project Cost Estimate: | | 2,625,000 | |

4

FLORIDA'S TURNPIKE

LIST OF PRIORITIES



TURNPIKE MAINLINE / SR 91 (MP 0X - MP 4X and MP 47 - MP 88)

10-Year Finance Plan Projects

| System / Facility | Category | County | FPN | Limits (From / To) | | Project Description | Existing Deficiency / Yr Needed | PH 22 Yr | PH 32 Yr | PH 52 Yr | PH 22 Funding (\$K) | PH 32 Funding (\$K) | PH 52 Funding (\$K) | Source (FP, TT, Other) |
|---------------------------|-------------|---------|----------|------------------------------------|---------------------------------|--|---------------------------------|----------|----------|----------|---------------------|---------------------|---------------------|------------------------|
| Turnpike Mainline / SR 91 | TSM&O | Broward | 446223-1 | MP 47 - Turnpike Mainline / SR 821 | MP 51 - Johnson St | TSM&O Add auxiliary lanes Includes interchange improvement: ◆ MP 49 - Hollywood Blvd / Pines Blvd / SR 820 | Existing Deficiency | Complete | Complete | 2024 | - | - | \$54,970 | 10-yr FP |
| Turnpike Mainline / SR 91 | TSM&O | Broward | 446224-1 | MP 51 - Johnson St | MP 53 - Griffin Rd / SR 818 | TSM&O Add auxiliary lanes | Existing Deficiency | Complete | Complete | 2024 | - | - | \$68,036 | 10-yr FP |
| Turnpike Mainline / SR 91 | TSM&O | Broward | 415927-4 | MP 71 - Sawgrass Expwy / SR 869 | MP 73 - Broward / Palm Beach CL | TSM&O Add auxiliary lanes | Existing Deficiency | Complete | 2024 | 2025 | - | \$450 | \$37,123 | 10-yr FP |
| Turnpike Mainline / SR 91 | Interchange | Broward | 446224-2 | - | - | TSM&O Interchange improvement: ◆ MP 53 - Griffin Rd / SR 818 | 2025 | - | - | 2026 | - | - | \$9,628 | 10-yr FP |
| Turnpike Mainline / SR 91 | Interchange | Broward | 444301-1 | - | - | TSM&O Interchange improvement: ◆ MP 69 - Sample Rd / SR 834 | Existing Deficiency | - | Complete | 2022 | - | - | \$2,474 | 10-yr FP |

Unfunded Projects

| System / Facility | Category | County | FPN | Limits (From / To) | | Project Description | Existing Deficiency / Yr Needed | PH 22 Yr | PH 32 Yr | PH 52 Yr | PH 22 Funding (\$K) | PH 32 Funding (\$K) | PH 52 Funding (\$K) | Source (FP, TT, Other) |
|---------------------------|-------------------------|---------|-----------------------------------|------------------------------------|--|--|---------------------------------|----------|----------|----------|---------------------|---------------------|---------------------|------------------------|
| Turnpike Mainline / SR 91 | Widening | Broward | 423373-6 | MP 3.3 - Miami-Dade / Broward CL | MP 3.6/47 - Turnpike Mainline / SR 821 | Widen to 8 lanes Interchange improvement: ◆ MP 47 - Turnpike Mainline / SR 821 | 2030 | - | - | 2031 | - | - | \$80,725 | 10-yr FP |
| Turnpike Mainline / SR 91 | Widening | Broward | 406095-1 ² 406099-1 | MP 47 - Turnpike Mainline / SR 821 | MP 51 - Johnson St | Widen to 10 lanes w/ML Includes interchange improvement: ◆ MP 49 - Hollywood Blvd / Pines Blvd / SR 820 | Existing Deficiency | - | Complete | - | - | - | - | 10-yr FP |
| Turnpike Mainline / SR 91 | Widening | Broward | 406095-4 ² | MP 51 - Johnson St | MP 53 - Griffin Rd / SR 818 | Widen to 10 lanes w/ML | Existing Deficiency | - | Complete | - | - | - | - | 10-yr FP |
| Turnpike Mainline / SR 91 | Widening | Broward | 442212-1 ² | MP 54 - I-595 / SR 84 / US 441 | MP 70 - Wiles Rd | Widen from 6/8 to 10/12 lanes w/ML Includes interchange improvements: ◆ MP 62 - Commercial Blvd / SR 870 ◆ MP 67 - Coconut Creek Pkwy / ML King Blvd ◆ MP 69 - Sample Rd / SR 834 Includes new interchanges: ◆ MP 61 - Oakland Park Blvd ◆ MP 63 - Cypress Creek Rd | Existing Deficiency | Complete | - | - | - | - | - | 10-yr FP |
| Turnpike Mainline / SR 91 | Widening | Broward | 415927-1 ² | MP 71 - Sawgrass Expwy / SR 869 | MP 73 - Broward / Palm Beach CL | Widen to 10 lanes w/ML | Existing Deficiency | - | Complete | - | - | - | - | 10-yr FP |
| Turnpike Mainline / SR 91 | TSM&O / Auxiliary lanes | Broward | - | MP 47 - Turnpike Mainline / SR 821 | MP 71 - Sawgrass Expwy / SR 869 | TSM&O / Auxiliary lanes | Existing Deficiency | - | - | - | - | - | - | Traffic Trends |

Projects Proposed/Funded by Others

| System / Facility | Category | County | FPN | Limits (From / To) | | Project Description | Existing Deficiency / Yr Needed | PH 22 Yr | PH 32 Yr | PH 52 Yr | PH 22 Funding (\$K) | PH 32 Funding (\$K) | PH 52 Funding (\$K) | Source (FP, TT, Other) |
|---------------------------|-------------|---------|-----|--------------------|---|---|---------------------------------|----------|----------|----------|---------------------|---------------------|---------------------|------------------------|
| Turnpike Mainline / SR 91 | Interchange | Broward | N/A | - | - | New interchange: ◆ MP 52 - Stirling Rd | - | - | - | - | - | - | - | Seminole Tribe Request |

¹ Project requires coordination with local government

² Project requires coordination with FGT

³ Partnership project

SAWGRASS EXPRESSWAY / SR 869

10-Year Finance Plan Projects

| System / Facility | Category | County | FPN | Limits (From / To) | | Project Description | Existing Deficiency / Yr Needed | PH 22 Yr | PH 32 Yr | PH 52 Yr | PH 22 Funding (\$K) | PH 32 Funding (\$K) | PH 52 Funding (\$K) | Source (FP, TT, Other) |
|------------------------------|-------------|---------|----------|--|--|---|------------------------------------|-----------------|----------|----------|------------------------|------------------------|------------------------|---------------------------|
| Sawgrass Expressway / SR 869 | Widening | Broward | 437155-5 | MP 0 - South of NW 8th St | MP 0.5 - South of Sunrise Blvd / SR 838 | Widen from 6 to 10 lanes Includes new interchange: ◆ MP 0 - NW 8th St | Existing Deficiency | - | 2022-24 | 2026 | - | \$4,090 | \$83,745 | 10-yr FP |
| Sawgrass Expressway / SR 869 | Widening | Broward | 437155-1 | MP 0.5 - South of Sunrise Blvd / SR 838 | MP 4.1 - North of Oakland Park Blvd / SR 816 | Widen from 6 to 10 lanes Includes interchange improvements: ◆ MP 1 - Sunrise Blvd / SR 838 ◆ MP 2.5 - Pat Salerno Dr ◆ MP 3 - Oakland Park Blvd | Existing Deficiency | Complete - 2017 | 2022-24 | 2025 | - | \$5,290 | \$186,411 | 10-yr FP |
| Sawgrass Expressway / SR 869 | Widening | Broward | 437155-6 | MP 4.1 - North of Oakland Park Blvd / SR 816 | MP 6.6 - North of Commercial Blvd / SR 870 | Widen from 6 to 10 lanes Includes interchange improvements: ◆ MP 5 - Commercial Blvd | Existing Deficiency | - | - | 2026 | - | - | \$67,488 | 10-yr FP |
| Sawgrass Expressway / SR 869 | Interchange | Broward | 443956-1 | MP 6.6 - North of Commercial Blvd / SR 870 | MP 9 - North of Atlantic Blvd / SR 814 | Widen from 6 to 10 lanes Includes interchange improvement: ◆ MP 8 - Atlantic Blvd / SR 814 | 2025 | Complete - 2017 | Complete | 2022 | - | - | \$52,181 | 10-yr FP |
| Sawgrass Expressway / SR 869 | Widening | Broward | 435461-1 | MP 9 - North of Atlantic Blvd / SR 814 | MP 12 - North of Sample Rd / SR 834 | Widen from 6 to 10 lanes Includes interchange improvements: ◆ MP 11 - Sample Rd | 2025 | - | - | 2024 | - | - | \$80,024 | 10-yr FP |
| Sawgrass Expressway / SR 869 | Widening | Broward | 435461-4 | MP 12 - North of Sample Rd / SR 834 | MP 14.8 - South of University Dr / SR 817 | Widen from 6 to 10 lanes Includes interchange improvements: ◆ MP 14 - Coral Ridge Dr | 2030 | - | - | 2026 | - | - | \$86,613 | 10-yr FP |
| Sawgrass Expressway / SR 869 | Widening | Broward | 435461-5 | MP 14.8 - South of University Dr / SR 817 | MP 18.4 - South of US 441 | Widen from 6 to 10 lanes Includes interchange improvement: ◆ MP 15 - University Dr / SR 817 | Existing Deficiency | - | - | 2026 | - | - | \$103,933 | 10-yr FP |
| Sawgrass Expressway / SR 869 | Widening | Broward | 437224-1 | MP 18.4 - South of US 441 | MP 22 - Powerline Rd | Widen from 6 to 10 lanes w/CD Includes interchange improvements: ◆ MP 18 - US 441 ◆ MP 19 - Lyons Rd ◆ MP 21 - Turnpike Mainline / SR 91 / SW 10th St | 2025 | Underway | 2022-25 | 2027 | - | \$39,640 | \$503,643 | 10-yr FP |

Partnership Projects

| System / Facility | Category | County | FPN | Limits (From / To) | | Project Description | Existing Deficiency / Yr Needed | PH 22 Yr | PH 32 Yr | PH 52 Yr | PH 22 Funding (\$K) | PH 32 Funding (\$K) | PH 52 Funding (\$K) | Source (FP, TT, Other) |
|------------------------------|------------------|---------|---------------------------|---------------------------|------|---|------------------------------------|----------|----------|----------|------------------------|------------------------|------------------------|---------------------------|
| SW 10th Street Connector | New Construction | Broward | 439891-1 ^{3(D4)} | Turnpike Mainline / SR 91 | I-95 | New road construction | Existing Deficiency | Complete | - | 2025 | - | - | \$100,450 | 10-yr FP |
| Sawgrass Expressway / SR 869 | Interchange | Broward | 437155-1 | - | - | Interchange improvement: ◆ MP 2.5 - Pat Salerno Dr | - | - | - | 2025 | - | - | Included with 437155-1 | City of Sunrise Request |

¹ Project requires coordination with local government

² Project requires coordination with FGT

³ Partnership project

"CARES FUNDS"

THE CORONAVIRUS AID, RELIEF, AND ECONOMIC SECURITY (CARES) ACT THE CORONAVIRUS RESPONSE AND RELIEF SUPPLEMENTAL APPROPRIATIONS ACT (CRRSAA)

The Broward MPO as a Transportation Management Area (TMA) receives a combination of \$12,312,904 from both the CARES ACT and CRRSAA to support transportation related projects. "CARES Funds" are available for obligation until September 30, 2024.

In order to use "CARES Funds" efficiently and in a timely manner, the Broward MPO selected projects that are ready to be implemented by the obligation deadline. The MMPL allocates CARES Funds" to two planning projects, three bike and pedestrian projects, one safety project and one traffic system management and operation project.

You can easily identify if a project is a "CARES Funds" selected project by reviewing if it contains a phase highlighted in blue with "CARES" in it's name (see Figure 4). In addition, you can review the projects description to see what amount and in what fiscal year the project will be allocated "CARES Funds".

| Phase | <2022 | 2022 | 2023 | 2024 | 2025 | 2026 | Amount Funded | Funding Needed |
|---|--|------------------|---------------------|------------------|------------------|---|--------------------------------|------------------|
| 01 | BROWARD MPO UPWP - FM# 439324-3-4-5 | | | | | | Funding Source: FEDERAL | |
| 2021-01 | Type of Work: TRANSPORTATION PLANNING | | Proposed Study: N/A | | LAP: N/A | | Yes | Yes |
| 2021 MPO PRIORITY #1 ADDITIONAL 1M FROM 435174-1 FY21. *Allocate \$650,000 of CARES funds to FY 2023. Allocate \$500,000 of CARES funds to FY 2024. | | | | | | | MTP Page # 1-2 | MTP Timeframe: |
| PLN | 0 | 4,657,558 | 4,000,000 | 4,500,000 | 5,000,000 | 5,000,000 | 23,157,558 | 5,500,000 |
| PLN-CARES* | 0 | 0 | 0 | 0 | 0 | 0 | 0 | 1,150,000 |
| Total | 0 | 4,657,558 | 4,000,000 | 4,500,000 | 5,000,000 | 5,000,000 | 23,157,558 | 6,650,000 |
| CITY: BROWARD MPO | | | | OWNERSHIP: N/A | | Annual Project Cost Estimate: 5,500,000 | | |

Project Phase: Highlights in blue which phase of a project will have "CARES Funds" allocated

Project description: Contains important information explaining the amount of "CARES Funds" allocated, and when the "CARES Funds" will be allocated

Figure 4 Sample of a project containing "CARES Funds"