

Prioritizing Space for Bikes in Urban Centers:

Planning, Implementation, and Evaluation

José R. Gonzalez, P.E. City of Miami Beach, Director, Transportation and Mobility Department

Alia Awwad, PE. Principal/Florida Lead, Alta Planning + Design, Inc.

alta



Reevaluating The Existing Transportation Needs of The Community

By Prioritizing People Who Walk, Bike, or Take Transit

2016 Miami Beach Transportation Master Plan (TMP)

Goal 1: Prioritize people

Goal 2: Provide reliable, convenient,
and consistent transit

Goal 3: Develop a safe, connected,
and consistent bicycle network

Goal 4: Provide accessible and
convenient off-street parking

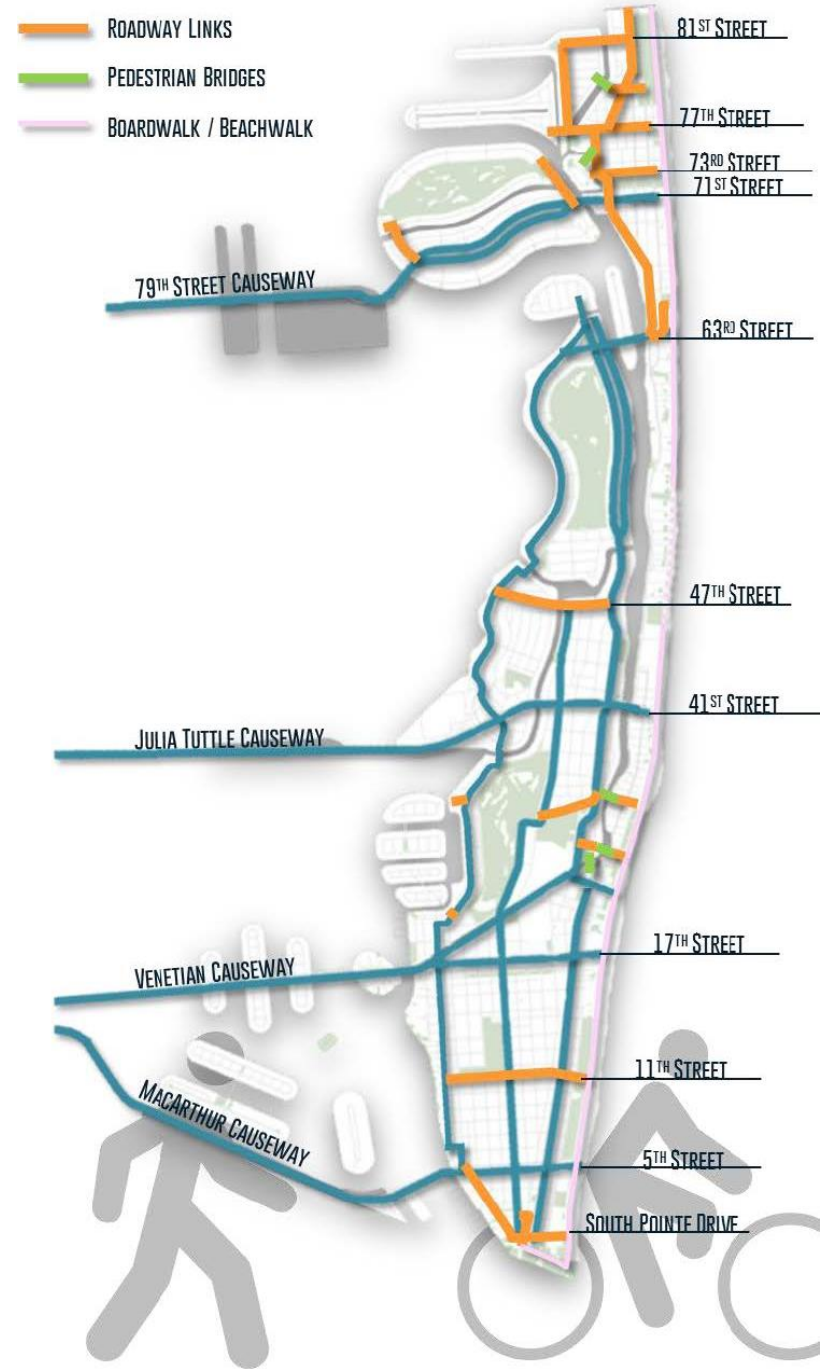
Goal 5: Ensure planned developments
are in concurrence with multimodal
capacity

Goal 6: Plan for efficient freight
mobility and delivery of goods



Bicycle Pedestrian Master Plan (BPMP)

The BPMP, which includes a Street Design Guide, is a **tool for future guidance toward the implementation of a true citywide multi-modal network.**



The Bike Network Vision

\$20 million over 20 years

- *Category 1:* Filling in the Gaps
- *Category 2:* Improvements to Existing Facilities
- *Category 3:* Aspirational



Today, Miami Beach has a vast network of bikeways!



2015

29.5 MILES:
OF BICYCLE NETWORK

7.0 MILES OF BICYCLE ROUTES

17.0 MILES OF BICYCLE LANES

4.8 MILES OF SHARED PATHS

2022


44.5 MILES:
OF BICYCLE NETWORK

11.6 MILES OF BICYCLE ROUTES

22.5 MILES OF BICYCLE LANES

10.4 MILES OF SHARED PATHS

City's First Protected Bikeway: Meridian Avenue



The Impetus

“The most desirable place I would ride my bike would be Meridian because of the shade but that just isn’t possible with the amount of traffic.”

Chad Blaize, Resident



Creating a Connected Bike Network



Bicycle Pedestrian Master Plan

Category 1: Filling in the Gaps

- 7** Protected bike lanes along Meridian Ave, between Dade Boulevard and 16 Street.

Challenges

- Limited Right-of-Way
- Limited pedestrian crossings
- High crash corridor
- Vehicular level of service
- Existing on-street parking

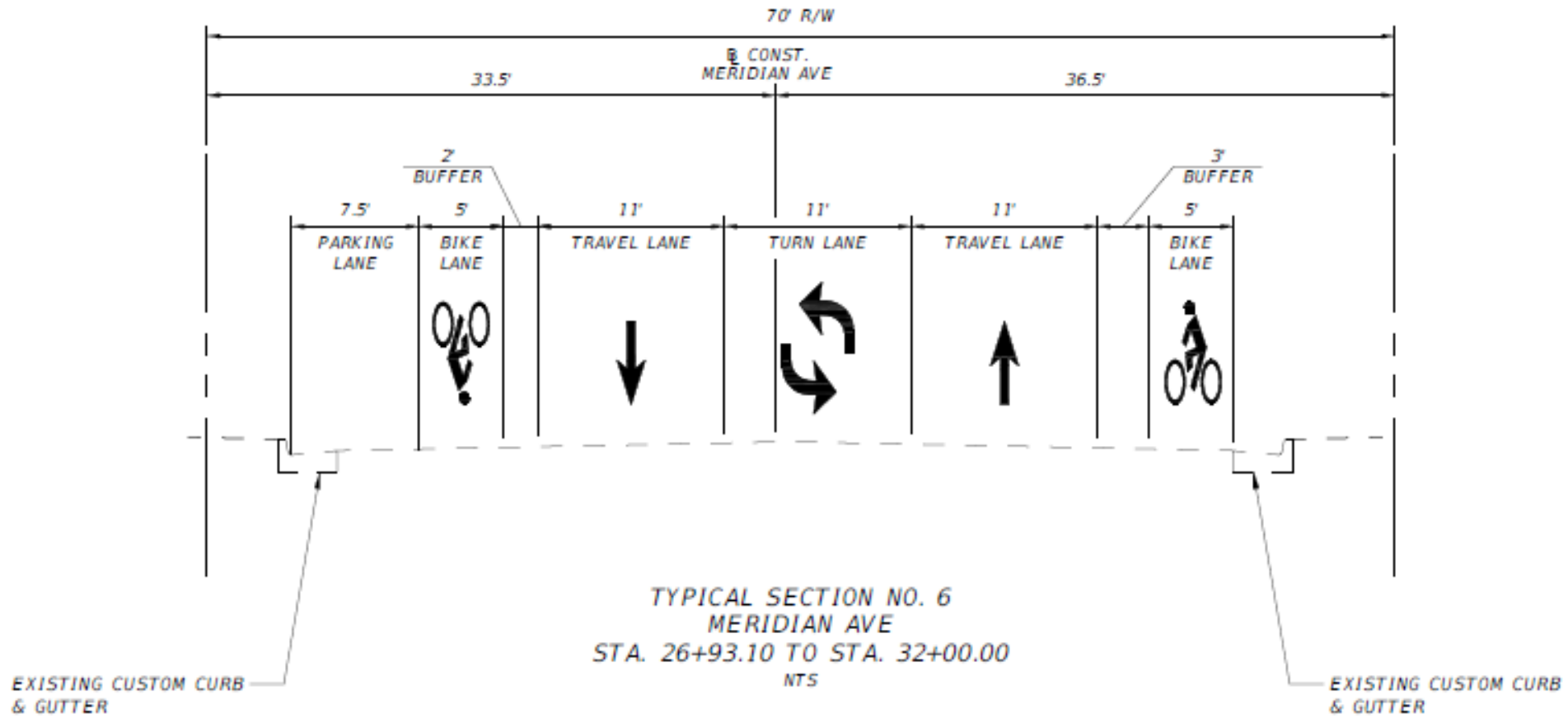


Meridian Avenue

Between 16th Street and Dade Boulevard

Right-of-Way	56' (back of sidewalk)
Pavement Width	46'
Posted Speed Limit	25 mph
Daily Volume	9,600-12,000 ADT
Number of Lanes	4
FDOT Context Classification	C6 Urban Core
Road Jurisdiction	City
Functional Classification	Collector
Vehicular LOS	LOS D
Transit routes	2
Development Pattern	Compact Urban, Residential

Proposed Design



Planning, Design, and Construction

PUBLIC MEETING

17 Street Bicycle & Transit Feasibility Study and
Meridian Avenue Bicycle Lane and Pedestrian
Improvement Design

MIAMI BEACH
RISING
ABOVE

alta

Please join the City of Miami Beach
to learn more about these
exciting projects.

**Thursday, March 28, 2019
6PM - 8PM**

1700 Convention Center Drive
Miami Beach City Hall
1st Floor Meeting Room

*For more information, contact Levi Stewart Figueroa
at LeviStewart@miamibeachfl.gov or 305.673.7514*

17 Street Bicycle and Transit Feasibility Study

This study, in partnership with the Miami-Dade
Transportation Planning Organization, is
evaluating bicycle and transit improvements to
the 17 Street corridor from West Avenue to
the Beach Walk.

Meridian Avenue Bicycle and Pedestrian Improvement Design

Design review of the proposed bicycle and
pedestrian improvement project for
Meridian Avenue.

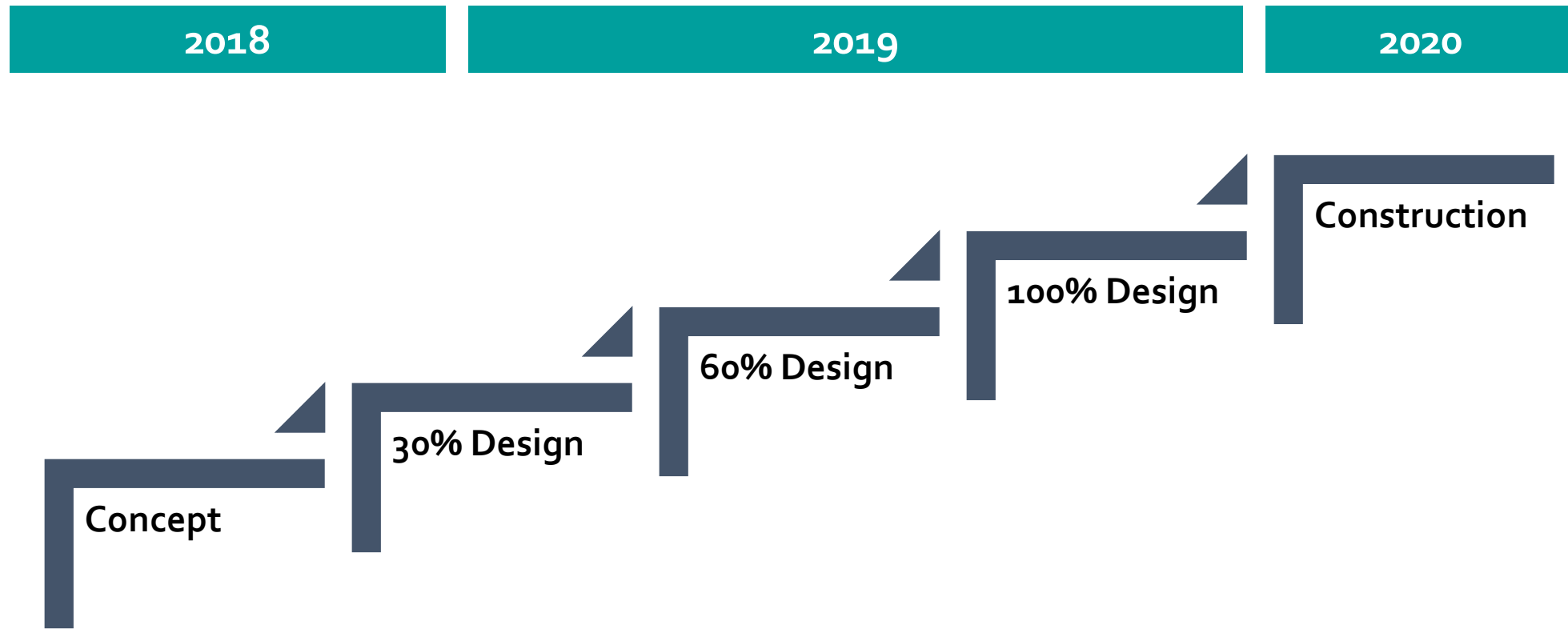


To request this material in alternate format, sign language interpreter (five-day notice required), information on access for persons with disabilities, and/or any accommodation to review any document or participate in any city-sponsored proceedings, call 305.604.2489 and select 1 for English or 2 for Spanish, then option 6; TTY users may call via 711 (Florida Relay Service).

For more information, visit <https://www.miamibeachfl.gov/city-hall/cip/>

MIAMI BEACH

Design and Construction



Meridian Ave Today

- ✓ City of Miami-Beach's **1st** Protected Bike Lane
- ✓ Miami-Dade County's **1st** Lane Repurposing Project

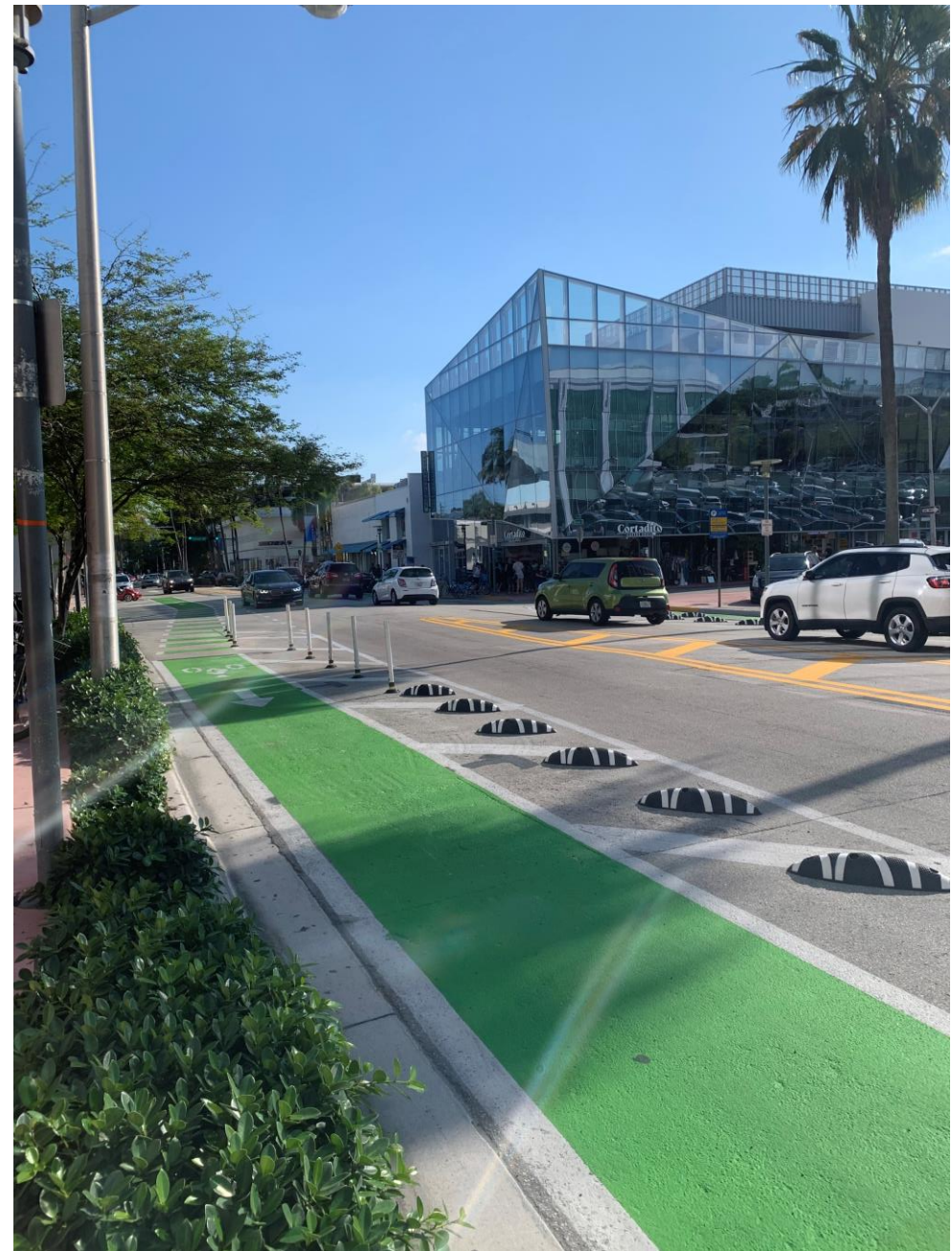


Lessons Learned



On-Street Parking

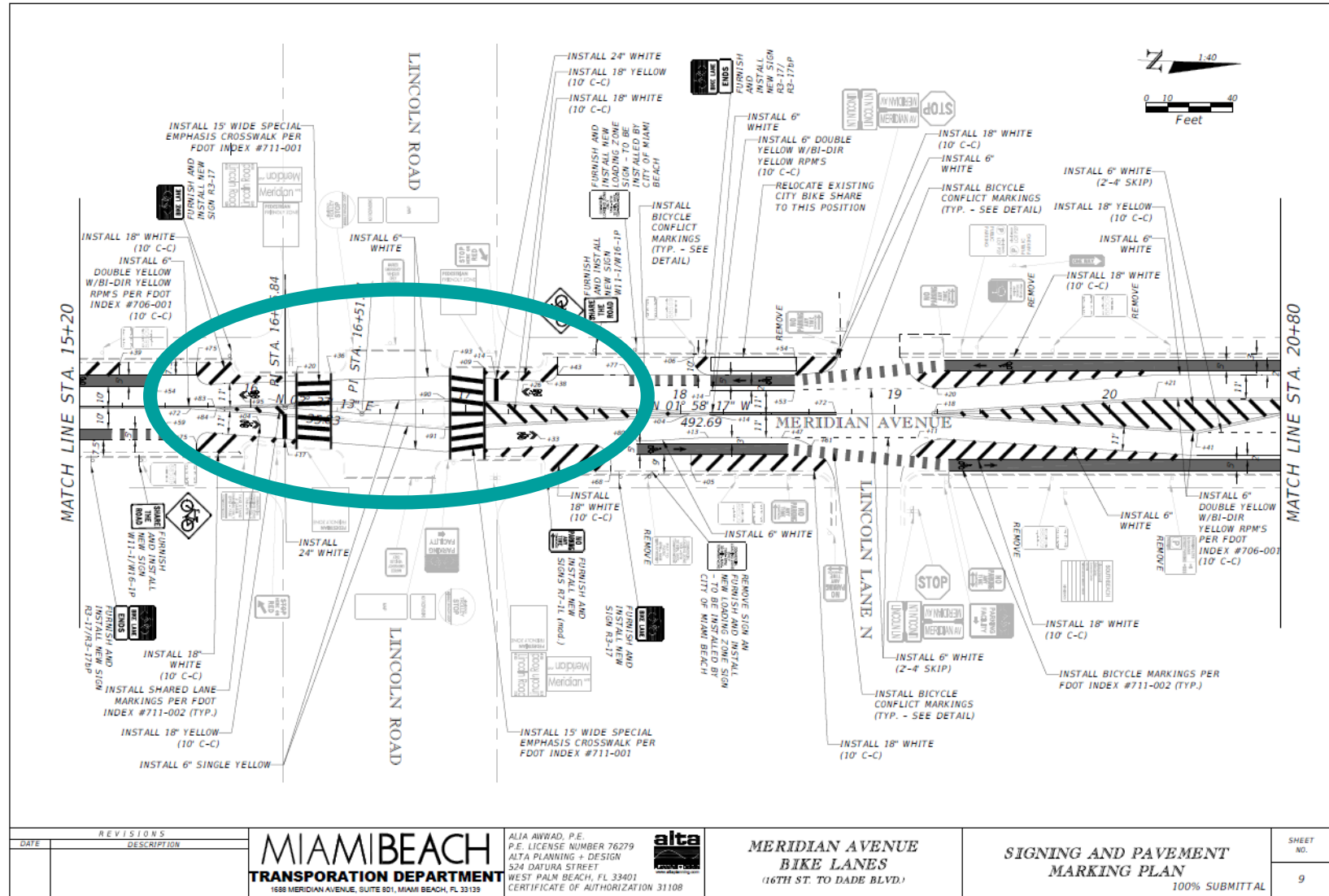
- Communicate needs early
- Quantify tradeoffs
- Compromise



Design Flexibility



□ Design for Context

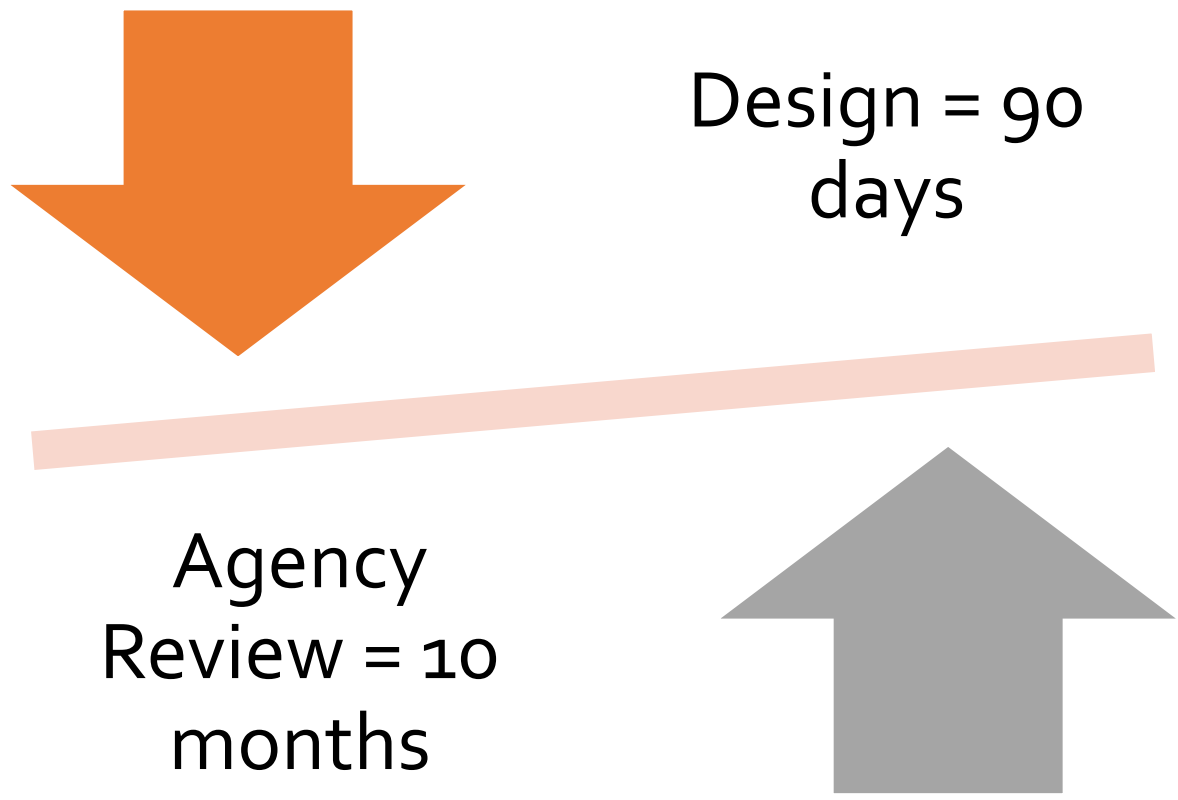


Design Flexibility

❑ How Innovative Should You get?



Agency Review



Catalyst Project



Meridian Ave at Lincoln Lane N Crossing

Meridian Ave at 18th St-19th St Crossing

Meridian Ave Shared Use Path (Dade Blvd to 28th St)

Meridian Ave Neighborhood Greenway (1st St to 16th St)

Thank you!