

CREATING COMPLETE COMMUNITIES:

Complete Streets and Equity



2016 Safe Streets Summit

James Carras

Carras Community Investment, Inc.



Equity:

Just and fair inclusion. **Goal:** To make Broward County a more fair and just place where all residents can access and take advantage of the County's economic, social, and environmental assets

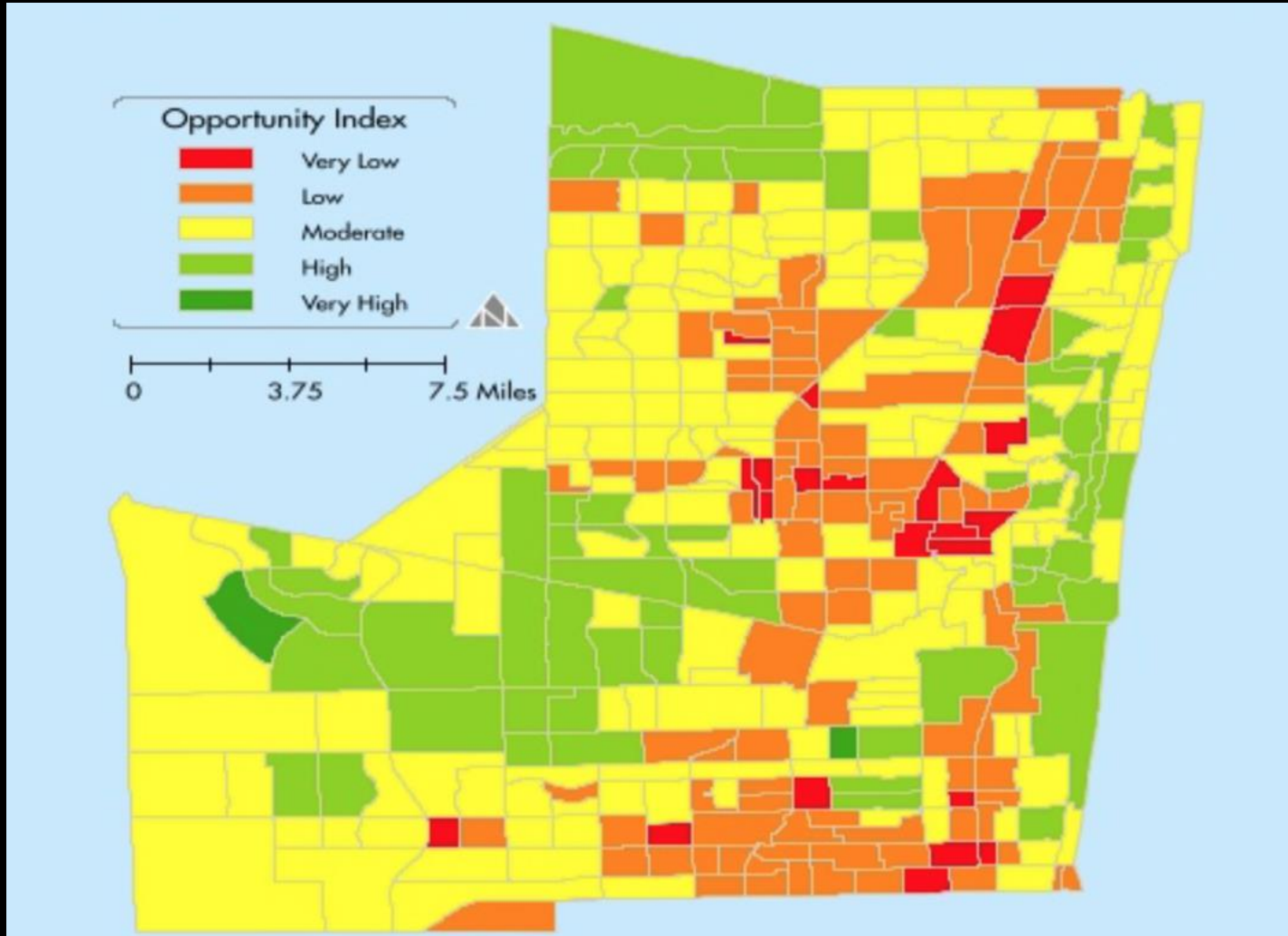
**“Tell me your zip code
and I can tell you how healthy you are.
That should not be... All communities should
have a right to a safe, sustainable, healthy, just, walkable
community.”**

*– Robert A. Bullard, dean of the School of Public Affairs
at Texas Southern University*

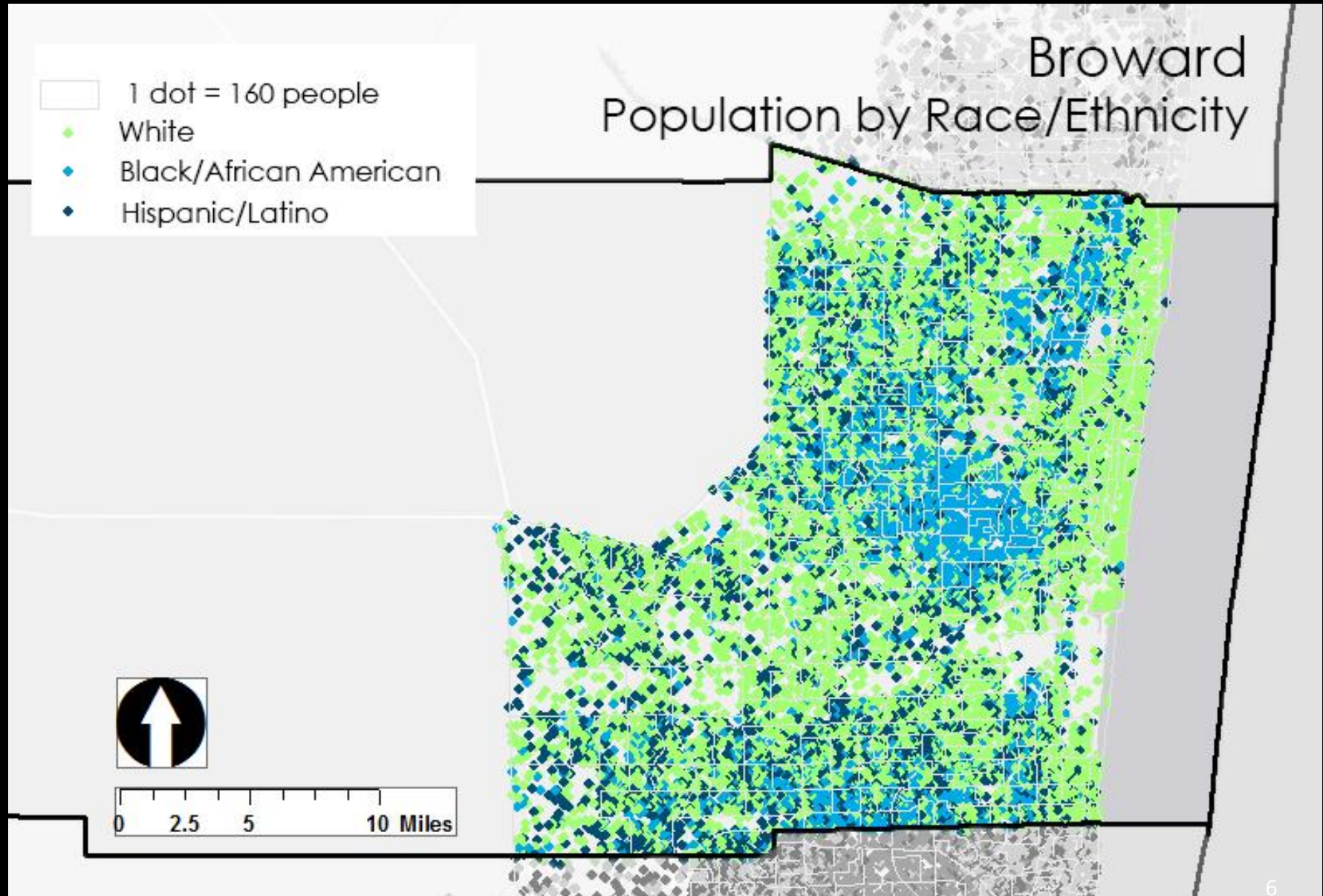




Opportunity – Broward County



Race/Ethnicity + Segregation



ACCESS TO A VEHICLE

Percentage of households with no access to a vehicle



Indian River
County

St. Lucie
County

Martin
County

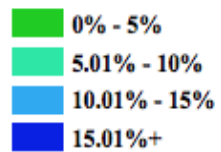
Palm Beach
County

**Broward
County**

Miami-Dade
County

Monroe
County

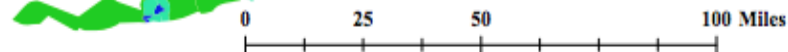
Percent of Households



Prepared By:
Carras Community Investment Inc. July 2012

Data Source:
ACS 2006 - 2010 5-Year Estimates

Note:
No data is available for census tracts shaded in gray



COMMUTING PATTERNS

Percentage of commuters who walk or take public transit



Indian River
County

St. Lucie
County

Martin
County

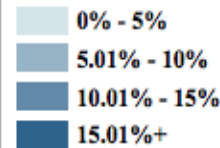
Palm Beach
County

**Broward
County**

Miami-Dade
County

Monroe
County

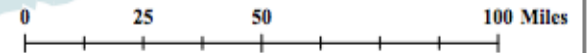
Percent of Commuters



Prepared By:
Carras Community Investment Inc. July 2012

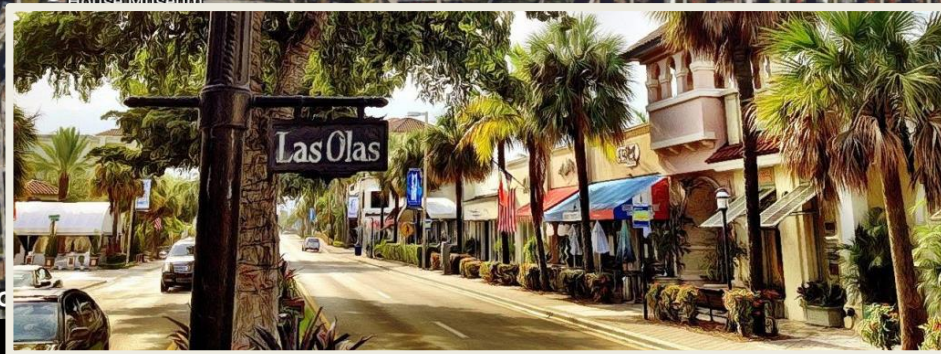
Data Source:
ACS 2006 - 2010 5-Year Estimates

Note:
No data is available for census tracts shaded in gray













NW 6th St
Fort Lauderdale, Florida
Street View - Jun 2015



A photograph of a window in a brick building. The window is divided into two panes. The top pane is dark, possibly with blinds. The bottom pane has a white sign taped to it that reads "WE SHALL NOT BE MOVED" in black, hand-painted capital letters. The brickwork is red and shows some wear and tear around the window frame.

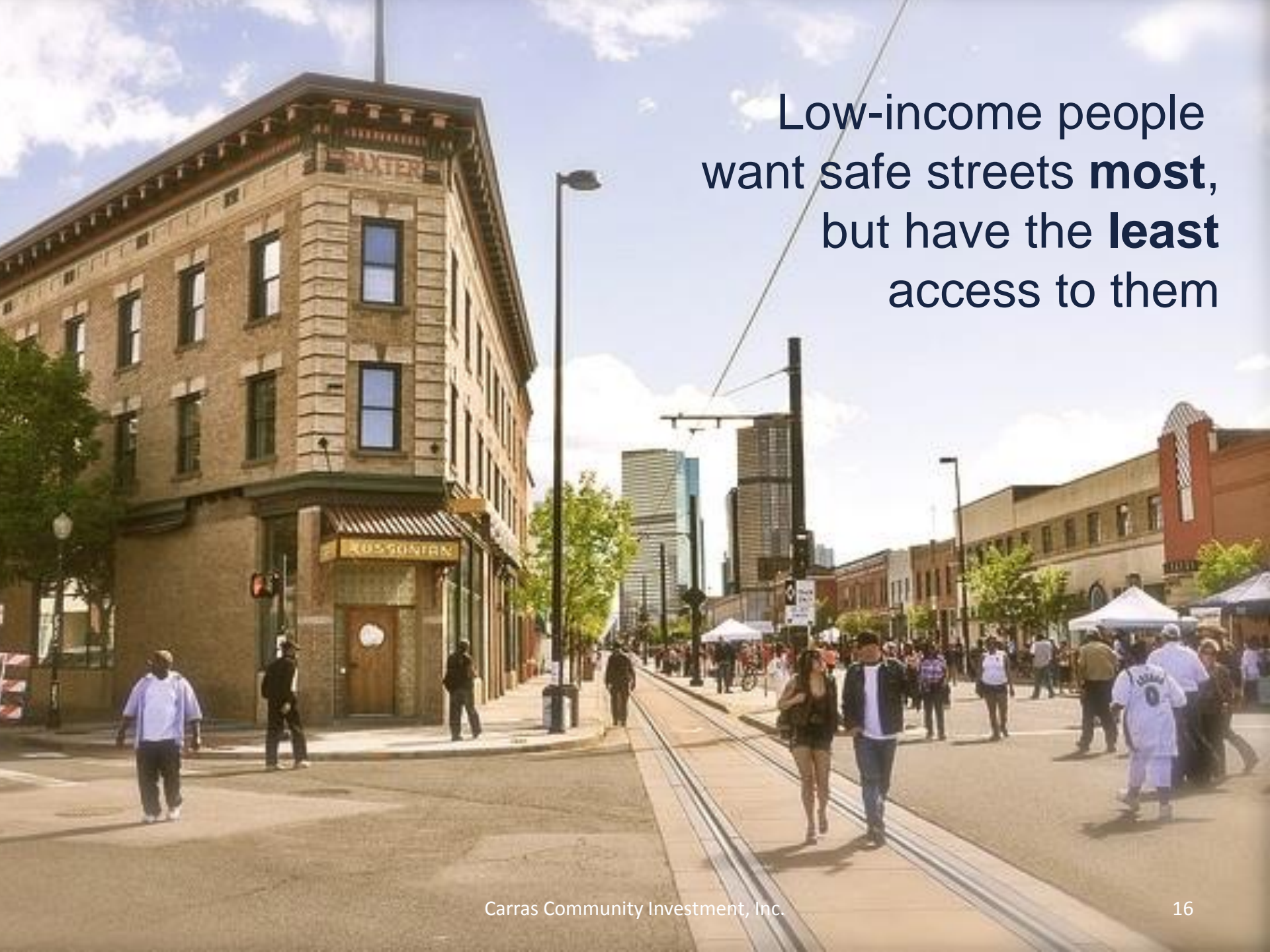
“...if you want to stop gentrification, one idea is [public] contracts with developers to include permanent affordable housing.”

- Jill Chamberlain, Blue Cross and Blue Shield of Minnesota

Cycling
as a
symbol of
GENTRIFICATION







Low-income people
want safe streets **most**,
but have the **least**
access to them



Equity in Transit Oriented Development Strengthens Regions





Equitable and Safe Streets- How do we get there?

- Recognize who we are serving and how we can achieve greater equity through improvements in street safety and connectivity
- Advance active transportation and healthy community design in underserved communities
- Ensure a safer and more accountable transportation system
- Include equity and community health language in federal legislation and state policies
- Create opportunity and revitalize underserved communities
- Support stronger and more economically competitive communities
- Ensure that higher opportunity communities are accessible to all through mixed-income housing, TOD equitable development and walking/public transportation connections to commuter rail.

Sources

http://www.communitycommons.org/2016/01/make-streets-safer-and-more-accessible-for-poor-people-of-color-disabled-and-kids/?km_Jan-13%20Email%20Campaign=Environment%2C%20Equity

Las Olas Corridor Plan, EDSA

<http://seven50.org/resources/southeast-florida-regional-opportunity-network-meeting-recap/seven50-fhea/>

<http://www.communitycommons.org/2016/01/health-benefits-of-walking-are-so-huge-lets-make-sure-everyone-can-do-it/>

https://www.washingtonpost.com/news/wonk/wp/2016/01/14/why-bike-lanes-are-hugely-unpopular-in-some-neighborhoods/?postshare=4471452785717858&tid=ss_mail

Flagler Village Streetscape Plan – Doug McCraw

<http://www.fortlauderdale.gov/home/showdocument?id=12000>

<http://denver.streetsblog.org/2015/11/23/low-income-denverites-want-safe-streets-most-have-least-access-to-them/>

Seven 50 Seven Counties Opportunity Index Map

<http://www.usatoday.com/story/news/nation/2014/03/02/biking-equity/5637077/>

<http://la-bike.org/city-los-angeles-bike-plan-environmental-justice>

<http://brr.berkeley.edu/2011/08/how-equity-in-transit-development-can-strengthen-regions/>

<http://smartgrowthtulsa.com/gallery/transit-oriented-development/>

Sources continued

<http://www.gjel.com/blog/street-safety-is-about-equity.html>

<http://saferoutespartnership.org/healthy-communities/equity>

<http://www.smartgrowthamerica.org/complete-streets/complete-streets-fundamentals/factsheets/equity>

<http://www.smartgrowthamerica.org/advocacy/federal-policy-priorities/>